



Elsbeth Kalendarian, DDS, MPH, PhD, Receives AHRQ R01 Award



Elsbeth Kalendarian, associate professor and chair of oral health policy and epidemiology at HSDM, received an R01 grant from the Agency for Healthcare Research and Quality for, “Measuring occurrence of and

disparities in dental clinic adverse events.” Kalendarian will collaborate with Drs. Rachel Ramoni and Alfa Yansane of HSDM, Dr. Mohammed Walji of the University of Texas at Houston, and, Drs. Brad Randal and Bill Rush of HealthPartners on this project. Results from this study will give the first comprehensive perspective on adverse events that happen in dental practices. It will also help to identify whether certain groups of people are at higher risk. Adverse events in medicine are a major source of preventable death and injury: identifying and addressing these events in dentistry will be a boon to our collective public health.

Lisa Simon, DMD, Appointed Instructor in Oral Health Policy and Epidemiology



Simon graduated from HSDM in 2014, receiving the Dr. Lois K. Cohen Award for Excellence in Global Health and the Dr. Gerald Shklar Award for Academic Excellence. She then completed the Harvard-affiliated general practice residency at the Cambridge Health Alliance. Simon will continue to focus her

research on improving the oral health of vulnerable populations. She is conducting analyses of the impact of financial limitations and limited English proficiency on outcomes of dental school clinic patients, as well as the role of reflection and public health exposure in dental school curricula. She is also involved in efforts to integrate primary care and dentistry by introducing a Nurse Practitioner into the Teaching Practice (HRSA funding). Clinically, she will be spending one day a week treating detainees at the Nashua Street Jail and will be creating volunteer opportunities for students in this unique high-need setting. Lisa would welcome collaboration with students or residents with an interest in any of these topics.

Shu-Chi Allison Yeh, PhD, Receives 2015-2016 Dean's Scholar Award



Shu-Chi Allison Yeh, postdoctoral fellow in the Intini Lab, and newly appointed Dean's Scholar, received her PhD in biomedical engineering from McMaster University in Ontario, Canada. Her thesis project, “Using PDT photosensitizer for quantitative detection and treatment of Barrett's Esophagus,” was completed under the mentorship of Dr. Qiyin Fang. In the Intini Lab, Yeh is researching minimally invasive methodologies for ablation of craniofacial bone progenitor cells. The project is being conducted in collaboration with the Lin Lab at the Wellman Center for Photomedicine at MGH. Lastly, Yeh is teaching a nanocourse to Harvard students entitled, *Introduction to Optical Imaging and Image Processing for Craniofacial Research*.

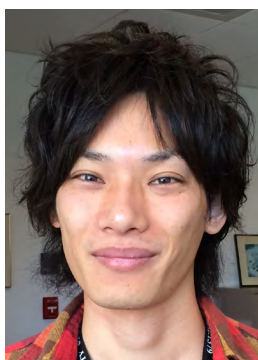
New Research Personnel



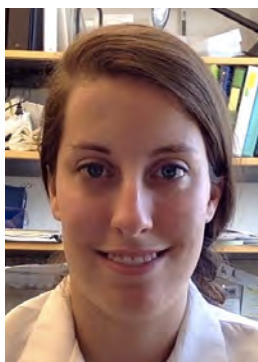
Sanjoy Khan, PhD, originally from Kolkata, India, joined the Yang Lab as a postdoctoral fellow. Khan received his PhD in molecular biology from the University of Memphis, Tennessee where he investigated the molecular mechanisms underlying the differential functions of two core proteins involved in circadian rhythms. In the Yang Lab, Khan is working to understand the role of the G-protein Galpha S in bone development and homeostasis.



Mark Maeno, DDS, PhD, joined the Nagai Lab as a Visiting Assistant Professor from Tokyo Medical and Dental University. Maeno received his DDS and PhD from Nippon Dental University in Tokyo, Japan. In the Nagai Lab, Maeno is working on the color science of dental materials, focusing on the development of Nagai's early caries detection system using near-infrared fluorescence.



Shingo Okuda, joined the Olsen Lab as a Visiting Scholar from Tottori, Japan. Okuda Received a BA in psychology and now studies medicine at Okayama University in Okayama, Japan. In the Olsen Lab Okuda is studying molecular and cellular mechanisms of anthrax toxin receptor 1-dependant bone tissue homeostasis.



Kristen Powers, joined the Whitman Lab as a Research Assistant this past June. Powers has BA in biology from Boston University, and worked in the Ahmad Lab at HMS researching drosophila and chromatin modifications. She is currently working on cell signaling pathways active in response to inflammation and looking at potential targets of novel compound, halofuginone, in these pathways and has an interest in the molecular pathways involved in disease onset and progression.

Basic and Clinical Science Seminars

October 21, 2015

Wenyuan Shi, PhD

*Professor and Chair of Oral Biology,
UCLA School of Dentistry*

November 4, 2015

Carmela R. Abraham, PhD

*Professor of Biochemistry,
Boston University School of Medicine*

December 9, 2015

Jill Helms, DDS, PhD

*Professor of Surgery, Stanford
University School of Medicine*

January 6, 2016

Evan Rosen, PhD

Professor of Medicine, HMS and BIDMC

February 3, 2016

David Kaplan, PhD

*Professor and Chair of Biomedical
Engineering, Tufts University*

March 16, 2016

Teresita Bellido, PhD

*Professor of Anatomy and Cell Biology,
Indiana University School of Medicine*

April 20, 2016

Jim Martin, MD, PhD

*Professor of Molecular Physiology and
Biophysics, Baylor College of Medicine*

May 11, 2016

Charles Lin, PhD

*Associate Professor of Medicine,
HMS and MGH*

June 1, 2016

Farshid Guilak, PhD

*Professor and Vice Chair of Orthopaedic
Research, Duke University Medical Center*

All talks are from 12pm-1pm in the REB Auditorium. Postdocs and students are invited to join the speaker for lunch after the talk. For more information, please contact Dr. Agnes Berendsen at Agnes_Berendsen@hsdm.harvard.edu

Postdoc Awards



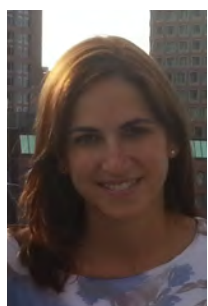
Hossein Bassir, DDS, DMSc periodontology resident, received the **David Steflik Memorial Student Research Grant** from the American Academy of Implant Dentistry Foundation for his project “Clinical outcomes of early implant placement versus immediate or delayed implant placement: Systematic review and meta-analysis.”



Mattia Bordoli, PhD, postdoctoral fellow in the Whitman Lab, received the **2015 Outstanding Postdoc Fellow Award** from the HMS/HSDM Office for Postdoctoral Fellows. Bordoli presented his research, “The role of secreted kinases in the extracellular environment” at the HMS/HSDM National Postdoc Appreciation Week Symposium.



Yi Fan, DDS, postdoctoral fellow in the Lanske Lab, received the **2015 ASBMR Young Investigator Award** for, “Critical and interrelated role of parathyroid Klotho and CaSR in regulating PTH synthesis and parathyroid gland growth.”



Jovana Kaludjerovic, PhD, postdoctoral fellow in the Lanske Lab, received a **2015 ASBMR Young Investigator Travel Grant** for, “Limb-specific Klotho expression is required for FGF23 production during renal failure.”

HSDM Publications

MULTI-DEPARTMENT

Allareddy V, Allareddy V, Rampa S, Nalliah R, Elangovan S. Global dental research productivity and its association with human development, gross national income, and political stability. *Journal of Evidence Based Dental Practice* 2015;15(3):90-96.

Ansari S, Freire M, Choi M, Tavari A, Almohaimeed M, Moshaverinia A, Zadeh H. Effects of the orientation of anti-BMP2 monoclonal antibody immobilized on scaffold in antibody-mediated osseous regeneration. *Journal of Biomaterials Applications* 2015; Jul 15.

Eva E, Islam M, Mosaddek A, Rahman M, Rozario R, Iftexhar A, Ahmed T, Jahan I, Abubakar A, Dali W, Razzaque M, Habib R, Haque M. Prevalence of stress among medical students: A comparative study between public and private medical schools in Bangladesh. *BMC Research Notes* 2015;8:327.

Lau A, Dodson T, Sonis S, Kaban L. An outcomes study of 40 years of graduates of a general practice dental residency. *Journal of Dental Education* 2015;79(8):888-896.

Møystad A, Bjørnland T, Friedland B, Donoff R. Ultrasonographic pilot study of mental foramen size, with and without postoperative neurosensory dysfunction. *Oral Surgery Oral Medicine Oral Pathology Oral Radiology* 2015;120(2):275-280.

Tan S, Allareddy V, Bruun R, Mulliken J, Sullivan S, Peguero O, Cooper J, Padwa B, Gerlein E, Cook E, Shusterman S. Effect of infant surgical orthopedic treatment on facial growth in preadolescent children with unilateral and bilateral complete cleft lip and palate. *Oral Surgery Oral Medicine Oral Pathology Oral Radiology* 2015;120(3):291-298.

ORAL HEALTH POLICY AND EPIDEMIOLOGY

Kalenderian E, Walji M, Ramoni R. (2015). Applying HCI principles in designing usable systems for dentistry. In Patel V, Kannampallil T, Kaufman D (Eds.), *Cognitive informatics for biomedicine-Human computer interaction in healthcare* (pp. 189-213). New York, NY: Springer.

Simon L. Narrative and patient care. *Journal of the American Dental Association* 2015;146(9):654.

RESTORATIVE DENTISTRY AND BIOMATERIALS SCIENCES

Schnitman P, Han R. Completely digital two-visit immediately loaded implants: Proof of concept. *Oral Implantology* 2015;41(4):429-436.

Schnitman P, Hayashi C. Papilla formation in response to computer-assisted implant surgery and immediate restoration. *Oral Implantology* 2015;41(4):459-466.



HARVARD
School of Dental Medicine

A publication of the HSDM Office of Research

188 Longwood Avenue — Boston, MA 02115
www.hsdm.harvard.edu

Bjorn R. Olsen, MD, PhD, Dean for Research
Dawn M. DeCosta, Editor and Layout
Heather M. Denny, Editing
Leanne “Jake” Jacobellis, Editing
Lia Sgourakes, Editing

For information regarding the Research Bulletin, please contact Dawn at 617.432.1121, or dawn_decosta@hsdm.harvard.edu.

HSDM Publications (cont).

DEVELOPMENTAL BIOLOGY

Chen R, Mian M, Fu M, Zhao J, Yang L, Li Y, Xu L. Attenuation of the progression of articular cartilage degeneration by inhibition of TGF- β 1 signaling in a mouse model of osteoarthritis. *American Journal of Pathology* 2015; Sep 3.

Duan X, Murata Y, Liu Y, Nicolae C, Olsen BR, Berendsen A. Vegfa regulates perichondrial vascularity and osteoblast differentiation in bone development. *Development* 2015;142(11):1984-1991.

Li Y, Xu L. Advances in understanding cartilage remodeling. *F1000Research* 2015;4(F1000 Faculty Rev):642.

Lloyd W, Agarwal S, Nigwekar S, Esmonde-White K, Loder S, Fagan S, Goverman J, Olsen BR, Jumlongras D, Morris M, Levi B. Raman spectroscopy for label-free identification of calciphylaxis. *Journal of Biomedical Optics* 2015;20(8):80501.

Masoud M, Marghalani H, Alamoudi N, El Derw D, Masoud I, Gowharji N. Longitudinal relationship between insulin-like growth factor-1 levels and vertical facial growth. *Journal of Orofacial Orthopedics* 2015; Aug 13.

Matsui A, Stephens D, Kantarci A, Rittling R. Early cytokine response to infection with pathogenic vs non-pathogenic organisms in a mouse model of endodontic infection. *PLoS One* 2015;10(7):e0132752.

Nagao M, Cheong C, Olsen BR. Col2-Cre and tamoxifen-inducible Col2-CreER target different cell populations in the knee joint. *PLoS One* 2015;10(8):e0135237.

Nimmagadda S, Buchtová M, Fu K, Geetha-Loganathan P, Hosseini-Farahabadi S, Trachtenberg A, Kuo W, Vesela I, Richman J. Identification and functional analysis of novel facial patterning genes in the duplicated beak chicken embryo. *Developmental Biology* 2015; Sep 15.

Rittling S, Singh R. Osteopontin in immune-mediated diseases. *Journal of Dental Research* 2015; Sep 4.

Toh W, Foldager C, Hui J, Olsen BR, Spector M. Exploiting sem cell-extracellular matrix interactions for cartilage regeneration: A focus on basement membrane molecules. *Current Stem Cell Research Therapies* 2015; Jul 23.

ORAL AND MAXILLOFACIAL SURGERY

Bouchard C, Peacock Z, Troulis M. Pediatric vascular tumors of the head and neck. *Oral and Maxillofacial Surgery Clinics of North America* 2015; Aug 18.

Inverso G, Chuang S, Kaban L. Oral and Maxillofacial Surgery Foundation Research and Fellowship Awards: A 26-year review at Massachusetts General Hospital and Harvard School of Dental Medicine. *Journal of Oral and Maxillofacial Surgery* 2015; Aug 28.

Murphy R, Basafa E, Hashemi S, Grant G, Liacouras P, Susarla S, Otake Y, Santiago G, Armand M, Gordon C. Optimizing hybrid occlusion in face-jaw-teeth transplantation: A preliminary assessment of real-time cephalometry as part of the computer-assisted planning and execution workstation for craniomaxillofacial surgery. *Plastic and Reconstructive Surgery* 2015;136(2):350-362.

Ruggiero B, Padwa B, Christoph K, Zhou S, Glowacki J. Vitamin D metabolism and regulation in pediatric MSCs. *Journal of Steroid Biochemistry and Molecular Biology* 2015; Sep 15.

Susarla S, Dodson T, Lopez J, Swanson E, Calotta N, Peacock Z. Do quantitative measures of research productivity correlate with academic rank in oral and maxillofacial surgery? *Journal of Dental Education* 2015;79(8):907-913.

Susarla S, Sacks J, Tufaro A, Redett R. Is graduate medical education a public good? *Annals of Surgery* 2015; Jul 1.

Susarla S, Slezak S, Redett R, Lifchez S. Funding for graduate medical education: The changing landscape. *Plastic and Reconstructive Surgery* 2015; Jun 29.

Zhou S, Thornhill T, Meng F, Xie L, Wright J, Glowacki J. Influence of osteoarthritis grade on molecular signature of human cartilage. *Journal of Orthopedic Research* 2015; Sep 3.

ORAL MEDICINE, INFECTION AND IMMUNITY

Braden G, Arbona R, Lepherd M, Monette S, Toma A, Fox J, Dewhirst F, Lipman N. A novel α -hemolytic *Streptococcus* species (*Streptococcus azizii* sp. nov.) associated with Meningoencephalitis in naïve weanling C57BL/6 mice. *Comparative Medicine* 2015;65(3):186-195.

DeMambro V, Le P, Guntur A, Maridas D, Canalis E, Nagano K, Baron R, Clemmons D, Rosen C. Igfbp2 deletion in ovariectomized mice enhances energy expenditure but accelerates bone loss. *Endocrinology* 2015; Jul 31.

DePalo J, Chai X, Lee S, Cutler C, Treister N. Assessing the relationship between oral chronic graft-versus-host disease and global measures of quality of life. *Oral Oncology* 2015; Aug 12.

Duran-Pinedo A, Yost S, Frias-Lopez J. Small RNA transcriptome of the oral microbiome during periodontitis progression. *Applied Environmental Microbiology* 2015; Jul 17.

Greenblatt M, Park K, Oh H, Kim J, Shin D, Lee J, Lee J, Singh A, Lee K, Hu D, Xiao C, Charles J, Penninger J, Lotinun S, Baron R, Ghosh S, Shim J. CHMP5 controls bone turnover rates by dampening NF- κ B activity in osteoclasts. *Journal of Experimental Medicine* 2015; Jul 20.

Marchesan J, Jiao Y, Schaff R, Hao J, Morelli T, Kinney J, Gerow E, Sheridan R, Rodrigues V, Paster B, Inohara N, Giannobile W. TLR4, NOD1 and NOD2 mediate immune recognition of putative newly-identified periodontal pathogens. *Molecular and Oral Microbiology* 2015; Jul 14.

Mawardi H, Glotzbecker B, Richardson P, Woo SB. Hematopoietic cell transplantation in patients with medication-related osteonecrosis of the jaws. *Biology and Blood Marrow Transplantation* 2015; Aug 21.

Shiwaku Y, Neff L, Nagano K, Takeyama K, de Bruijn J, Dard M, Gori F, Baron R. The crosstalk between osteoclasts and osteoblasts is dependent upon the composition and structure of biphasic calcium phosphates. *PLoS One* 2015;10(7):e0132903.

Sima C, Cheng Q, Rautava J, Levesque C, Sherman P, Glogauer M. Identification of quantitative trait loci influencing inflammation-mediated alveolar bone loss: insights into polygenic inheritance of host-biofilm disequilibria in periodontitis. *Journal of Periodontal Research* 2015; Jun 30.

Whitney E, Stoopler E, Brennan M, DeRossi S, Treister N. Competencies for the new postdoctoral oral medicine graduate in the United States. *Oral Surgery Oral Medicine Oral Pathology Oral Radiology* 2015; Apr 25.

Zhou J, Jin J, Patel E, Yu Q. Interleukin-6 inhibits apoptosis of exocrine gland tissues under inflammatory conditions. *Cytokine* 2015; Aug 5.