

ArcGIS for Desktop Installation Instructions

(Last updated on June 2015)

Table of Contents

Download.....	1
Installation	1
Getting license from the Harvard server	1
Getting single use license.....	6
For questions	12

Download

1. Start from <http://gis.harvard.edu/tools/software/arcgis-desktop-1031>
2. Login with HUID at <http://gis.harvard.edu/software-access>
3. Note the LOGIN and Password after login with HUID
4. Return to <http://gis.harvard.edu/tools/software/arcgis-desktop-1031>
5. Click on the link “ArcGIS Desktop 10.3.1 Software Package” and enter the LOGIN and Password from the above source

Installation

1. Click the ArcGIS_Desktop_1031_145699.exe application to start the installation.
2. Accept the default settings, agree with the license terms, and perform a “Complete” installation.
3. When the setup is complete the ArcGIS Administrator Wizard is displayed (or you can access it by clicking Start->Programs_>ArcGIS_>ArcGIS Administrator), allowing you to configure a concurrent or single use authorization.

Getting license from the Harvard server (Concurrent use license)

You can run ArcGIS Desktop using a floating license served by the Harvard license server from anywhere with Internet connection. If you are away from the Harvard campus, you need to login to your Harvard VPN account first.

ArcGIS Administrator Wizard

1. Select a product

ArcGIS for Desktop

☒ Advanced (ArcInfo) Concurrent Use ☐ Advanced (ArcInfo) Single Use
☐ Standard (ArcEditor) Concurrent Use ☐ Standard (ArcEditor) Single Use
☐ Basic (ArcView) Concurrent Use ☐ Basic (ArcView) Single Use

ArcGIS Engine

☐ ArcGIS Engine (Concurrent Use) ☐ ArcGIS Engine (Single Use)
☐ ArcGIS Engine and ArcGIS Engine Developer Kit (Single Use)

Esri CityEngine

☐ Advanced Concurrent Use ☐ Advanced Single Use
☐ Basic Concurrent Use ☐ Basic Single Use

2. Define a License Manager for Concurrent Use products

License Manager

☐ Define a License Manager now:
Not_Set Browse...

☐ Define a License Manager later from the ArcGIS Administrator

2. Launch the Authorization Wizard for Single Use products

Authorization Wizard

Authorize Now

OK Cancel

ArcGIS Administrator Wizard

1. Select a product

ArcGIS for Desktop

- ☒ Advanced (ArcInfo) Concurrent Use
- ☐ Standard (ArcEditor) Concurrent Use
- ☐ Basic (ArcView) Concurrent Use
- ☐ Advanced (ArcInfo) Single Use
- ☐ Standard (ArcEditor) Single Use
- ☐ Basic (ArcView) Single Use

ArcGIS Engine

- ☐ ArcGIS Engine (Concurrent Use)
- ☐ ArcGIS Engine (Single Use)
- ☐ ArcGIS Engine and ArcGIS Engine Developer Kit (Single Use)

Esri CityEngine

- ☐ Advanced Concurrent Use
- ☐ Basic Concurrent Use
- ☐ Advanced Single Use
- ☐ Basic Single Use

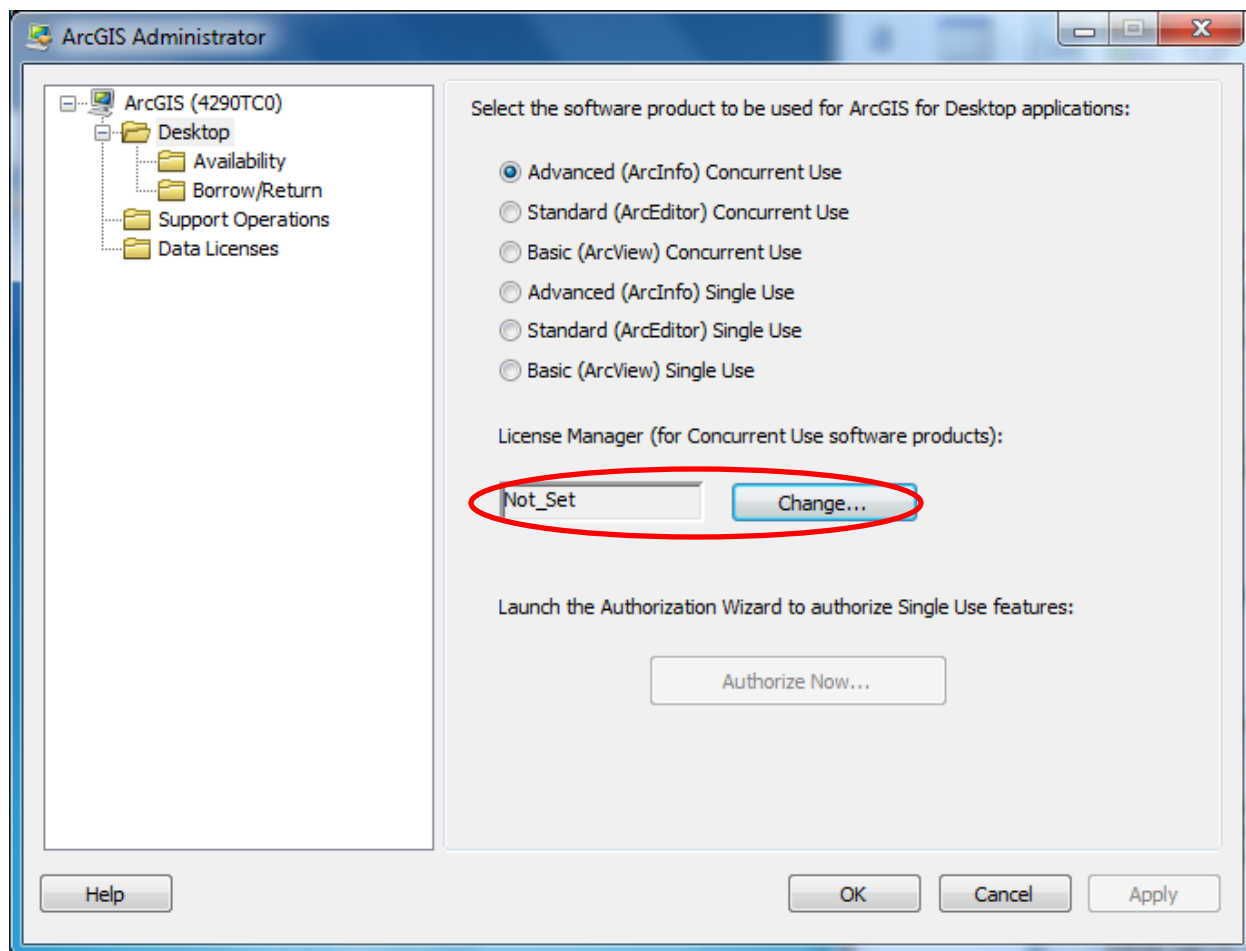
2. Define a License Manager for Concurrent Use products

License Manager

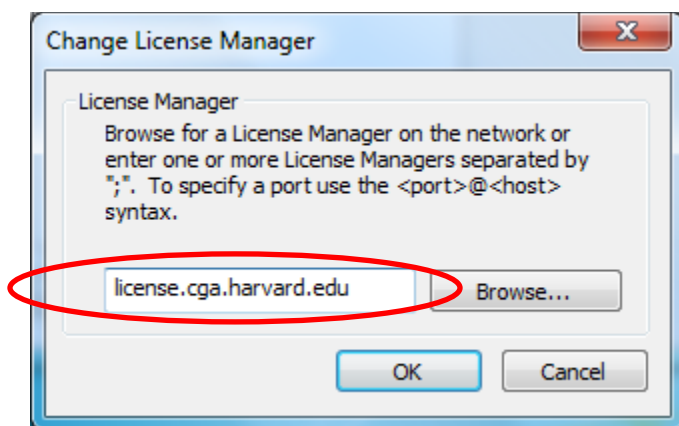
- ☐ Define a License Manager now:
- ☐ Define a License Manager later from the ArcGIS Administrator

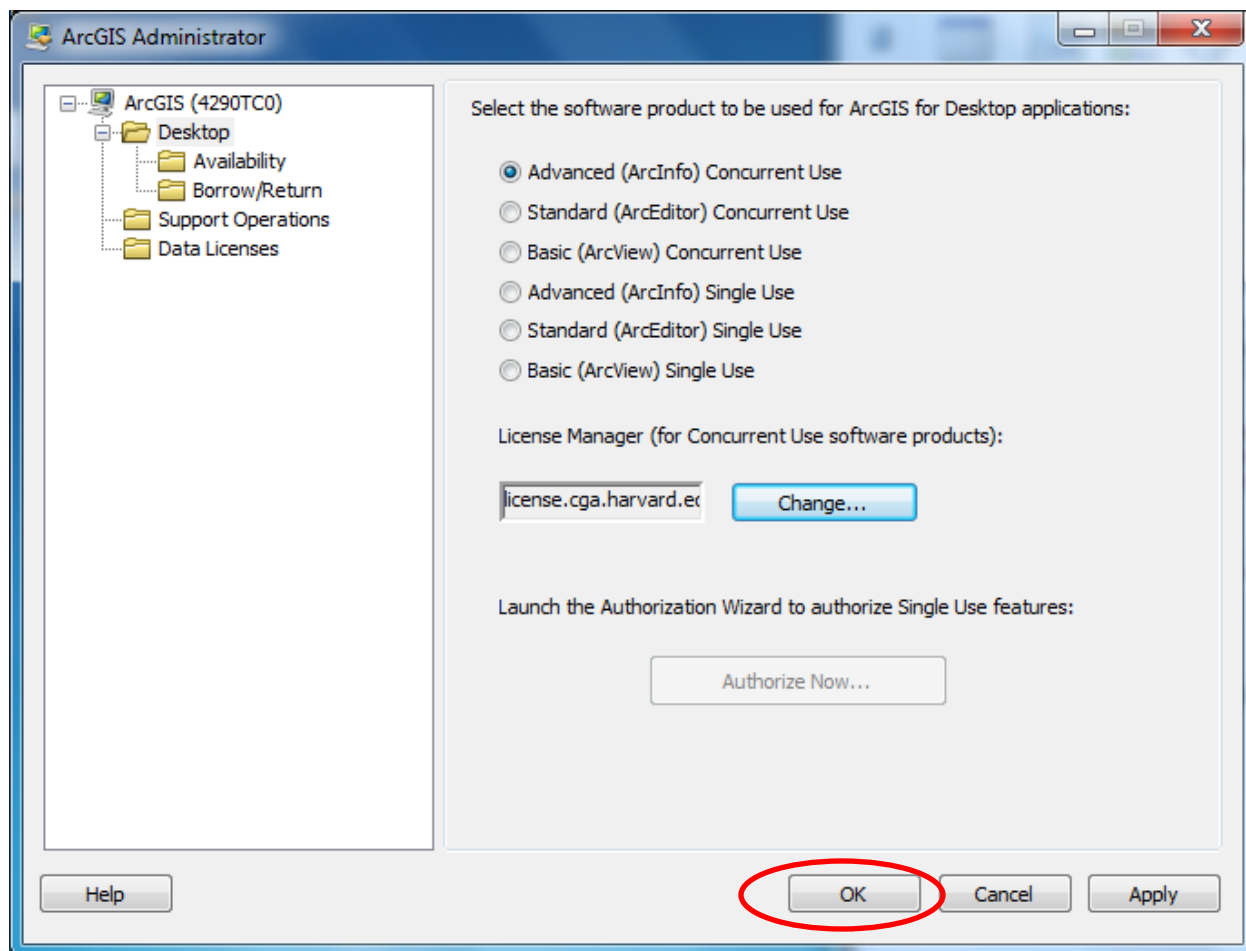
2. Launch the Authorization Wizard for Single Use products

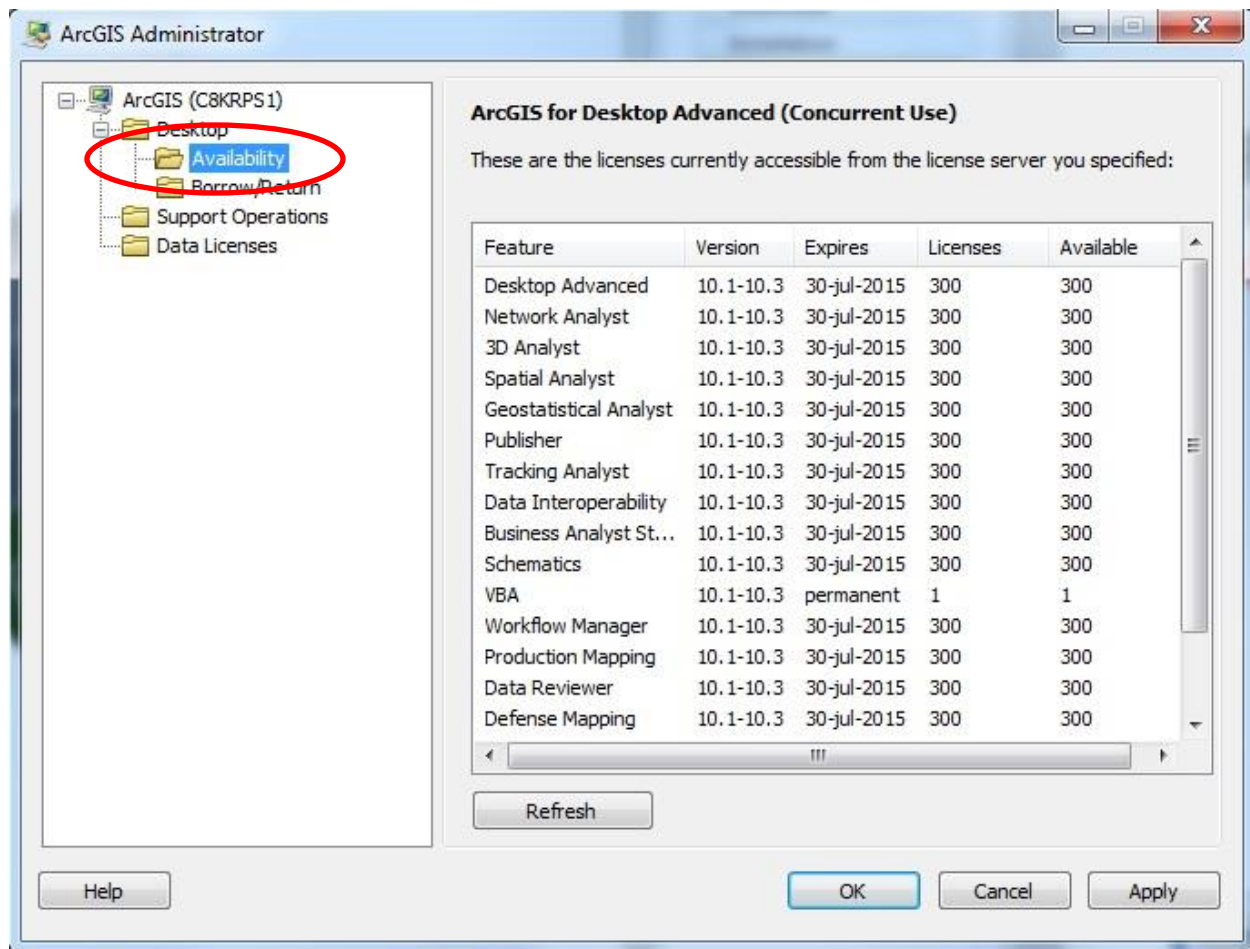
Authorization Wizard



Click on "Change" and type the license server name: **license.cga.harvard.edu**







Getting single use license

You will need a single use license to run ArcGIS for Desktop when:

- a) disconnected from the Internet, or
- b) away from Harvard Campus and without a Harvard VPN login.

Submit your license request using the Single-use License Request Form <http://gis.harvard.edu/gis-software-single-use-license-request-form> (HUID required).

If you need some of the Extensions, you will need to request them one at a time.

Write down the license code(s) displayed on the popup window after you hit "Submit".

ArcGIS Desktop 10.2.2 | Ce x GIS Software Single Use Li x

gis.harvard.edu/gis-software-single-use-license-request-form

RT Our Mission | I/UCR... HDV - Historical Dat... NSF I/UCRC: Annual... Other bookmarks

CENTER FOR GEOGRAPHIC ANALYSIS
HARVARD UNIVERSITY

SERVICES TRAINING TOOLS RESOURCES EVENTS CGA

Home

GIS Software Single Use License Request Form

Please fill out the form below to obtain your license code.

[Contact CGA](#)

GIS Software Single-Use License Request Form

Request Form

Name:

School: Dept:

Status:

Email:

HUID:

HUID Expiration Date:

Product:

- ERDAS Imagine
- ESRI CityEngine
- ArcGIS for Desktop 10.0
- ArcGIS for Desktop 10.1 or higher
- Aviation
- Business
- Data Reviewer
- Defense Mapping
- Production Mapping
- Geostatistical Analyst
- Spatial Analyst
- Data Interoperability
- Workflow Manager
- Nautical
- Network Analyst
- Publisher
- Schematics
- 3D Analyst
- Tracking Analyst
- Bathymetry

For comments or problems getting th help.cga.harvard.edu

When you are finished, please thanks!

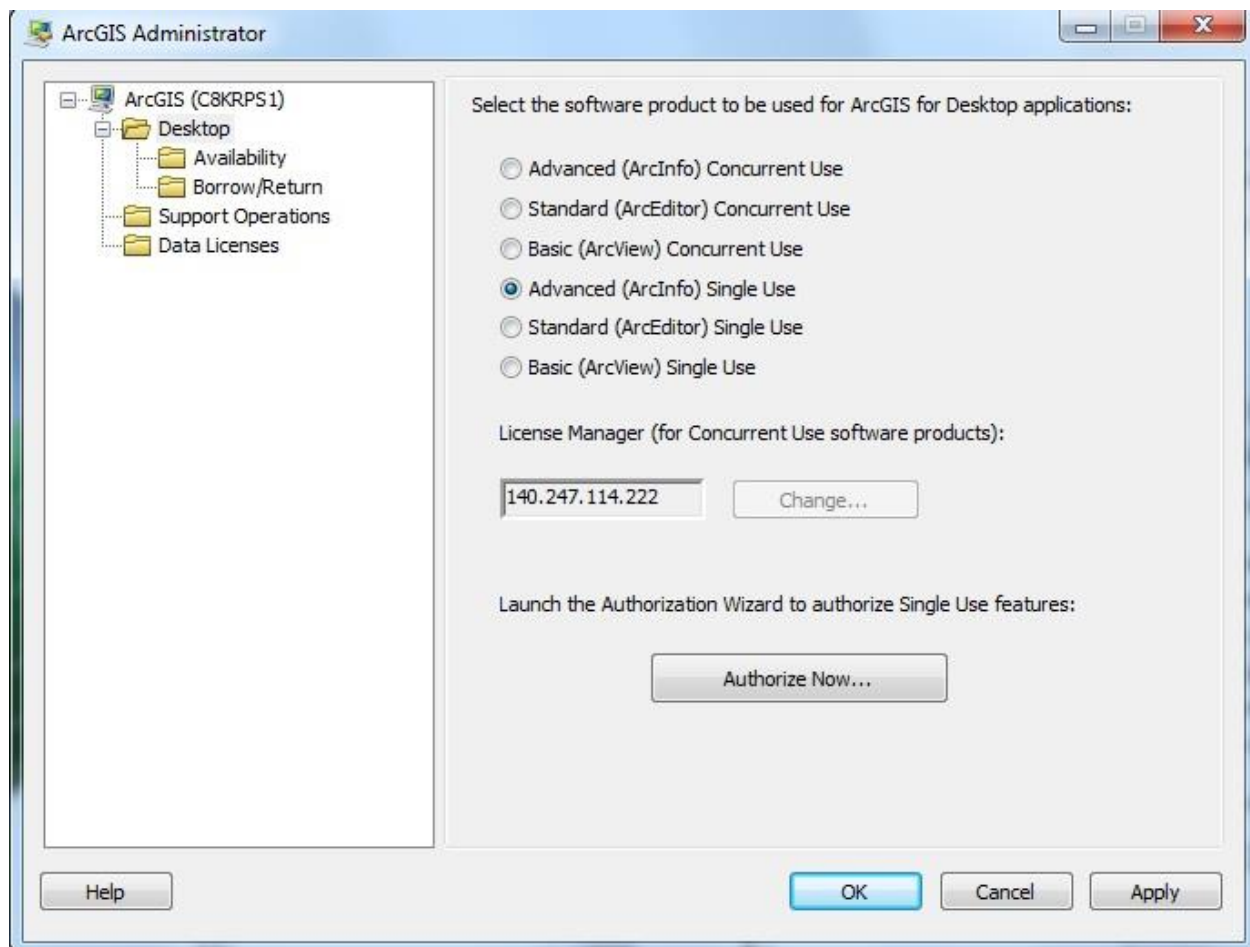
to close your Harvard PIN Session,

The Center for Geographic Analysis, a member of the [Institute for Quantitative Social Science \(IQSS\)](#), 1737 Cambridge Street, Cambridge MA 02138 ([map](#)) 617-495-3213

© President & Fellows Harvard University. All Rights Reserved.

Open ArcGIS Administrator

Select Advanced (ArcInfo) Single Use, and click Authorize Now... (your PC needs to be connected to the Internet for this one time).



Software Authorization Wizard

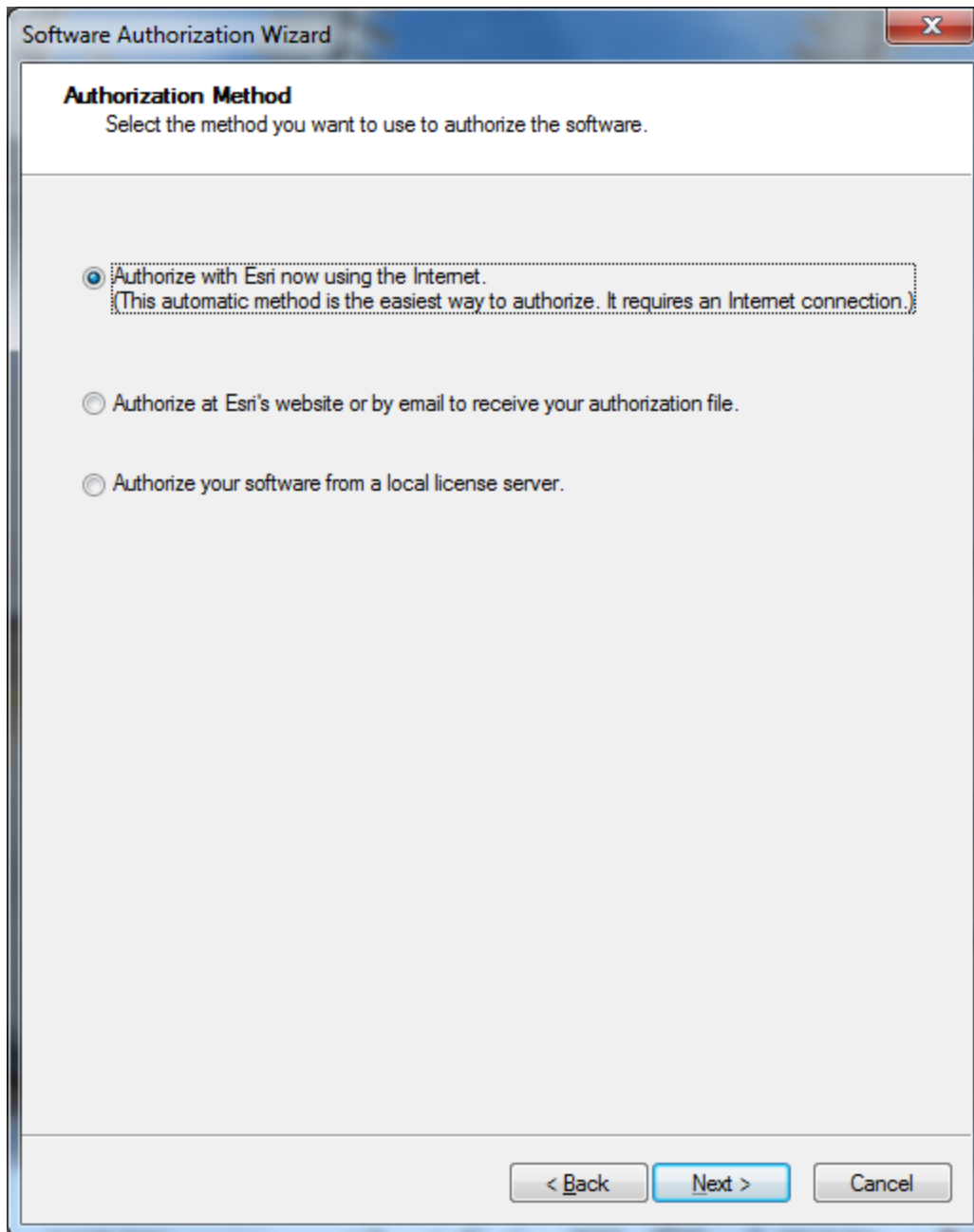
Authorization Options
You must authorize the software prior to use. Select from the options below.

Authorization Options

☒ I have installed my software and need to authorize it.

☐ I have already authorized the software and need to authorize additional extensions.

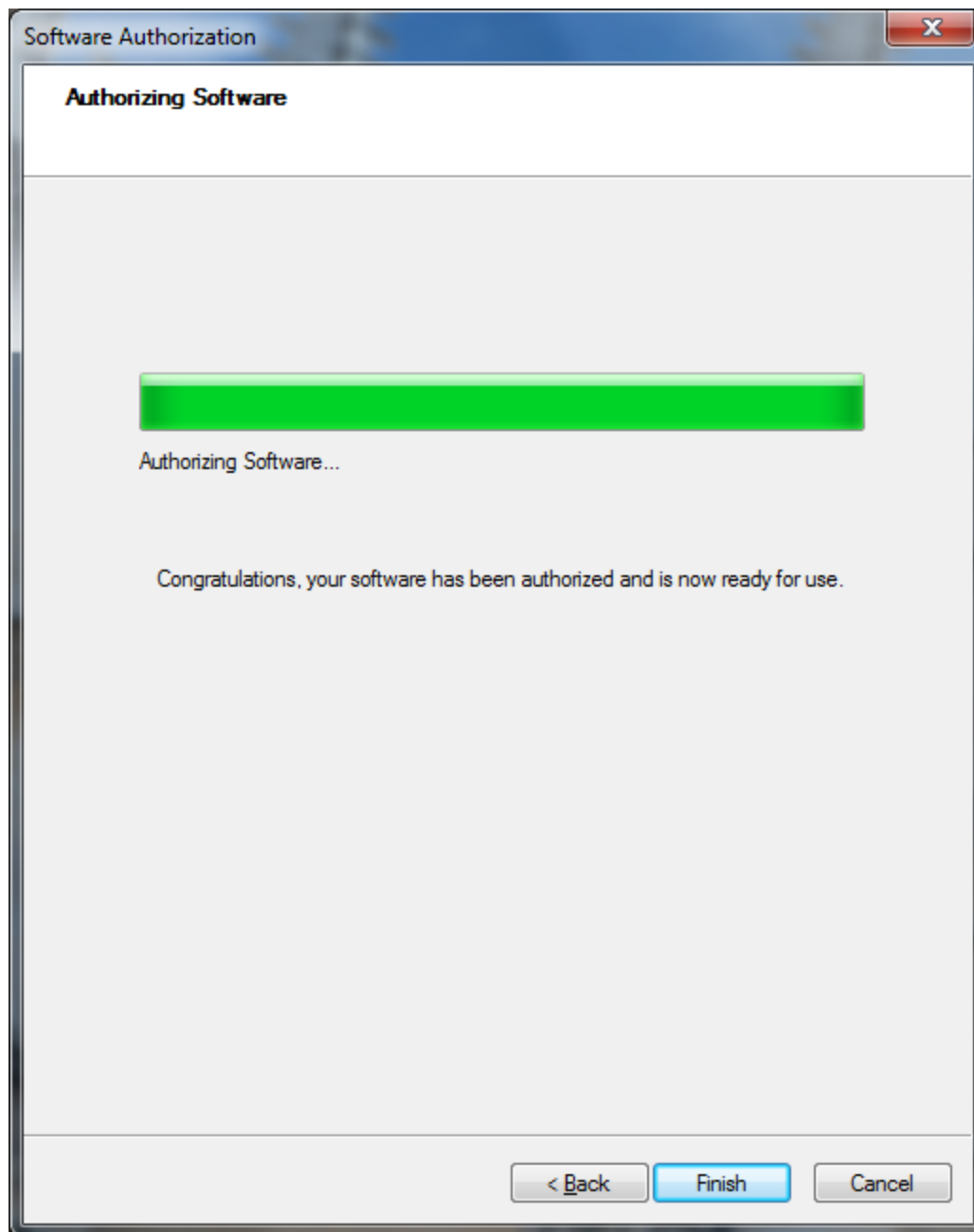
☐ I have received an authorization file from Esri and am now ready to finish the authorization process.



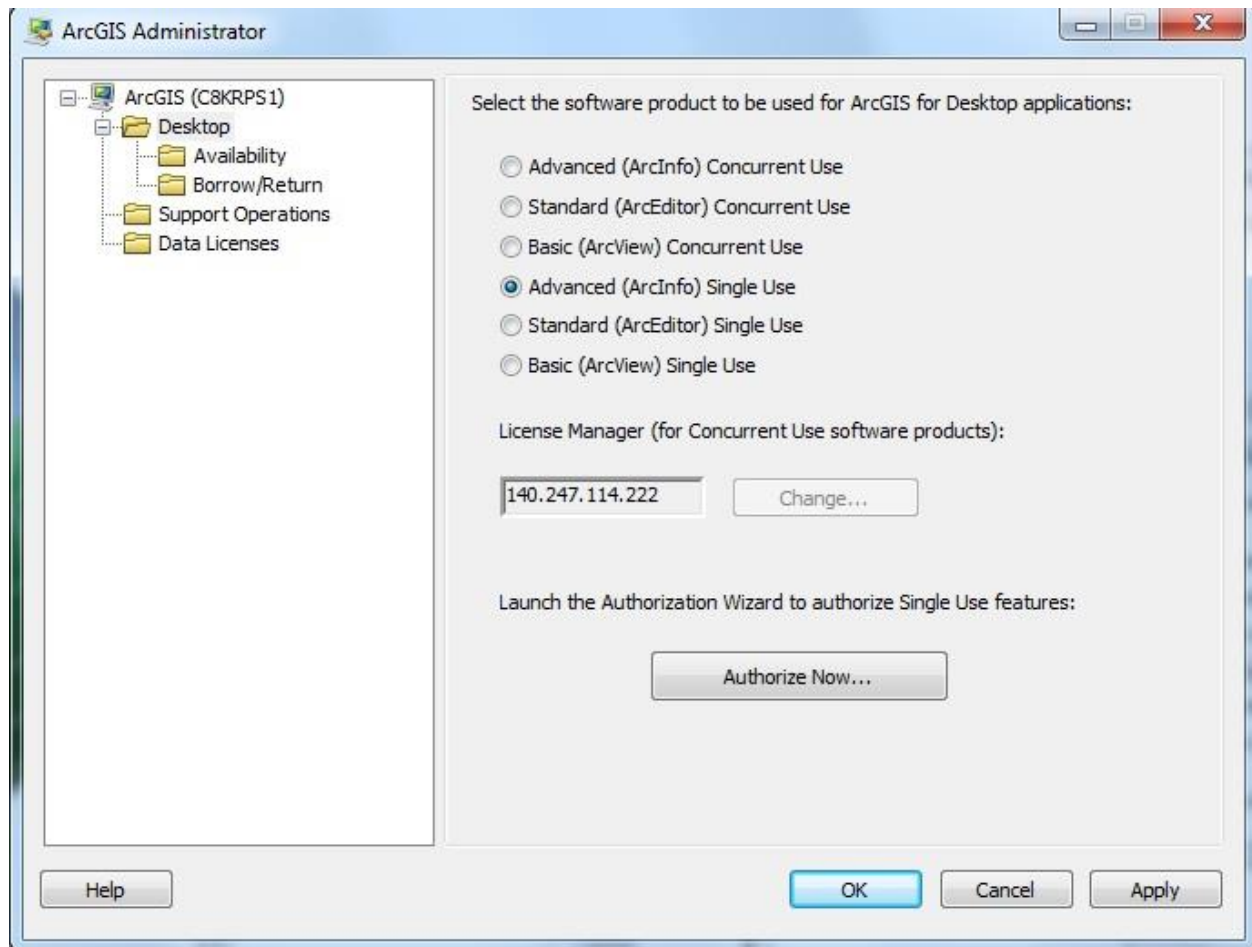
Enter your contact information and the license code(s) you have received.

You may leave out “Full Motion Video” in the Extensions list, since we don’t have its license in the site license package.

For Extensions that we do have license for, but not listed in the form, you can add them to the end of the table manually.



Now you can toggle between the Concurrent license from the Harvard server and your single use license on your PC, depending on whether or not you are connected to the Internet and logged onto a Harvard VPN account.



For questions

Contact the CGA: <http://gis.harvard.edu/contactus>.