



PennState

# PENN STATE UP CLOSE









Every Penn Stater has a story. What do you want yours to be?

The Penn State story is where old-school tradition meets 21st-century innovation. Where things like studying hard and making the most of opportunities never go out of style.

From our earliest days of being the Farmers High School to being recognized today as one of the top 100 universities in the world, we've measured student success by going from the "ah" of understanding to the "aha!" of discovery.

It's why Penn State is investing \$30 million to nurture business start-ups springing from student ideas and faculty research. It's why new majors are being launched to meet the demands of a changing, challenging, and technologically charged world. And it's why Penn State is at the forefront in solutions to address some of the most pressing environmental and humanitarian problems facing the planet.

That's the Penn State story.

But for Penn Staters—our students and alumni—that story gets personal. It's in how a student body of more than 97,000 feels like a community and an alumni network of 645,000 becomes a family. It's about relationships, moments, and memories that will last a lifetime.

What will your Penn State story be?  
Start finding out today.



# “MY TIME HERE AT PENN STATE HAS BEEN AMAZING.”

**RAMON GUZMAN**, *Education and Public Policy*

*“I sometimes walk around Penn State early in the morning or after my run or late at night coming back from meetings, and I stop and say out loud ‘thank you’ to the entire campus.”*

*For Ramon and his older sister, also a Penn Stater, the University is about family. As the first members of their family to go to college, he says, it’s a big deal to be here. But Ramon has found his Penn State family, too.*

*“The community here makes you feel like family. You see it when you’re here. You feel it.”*

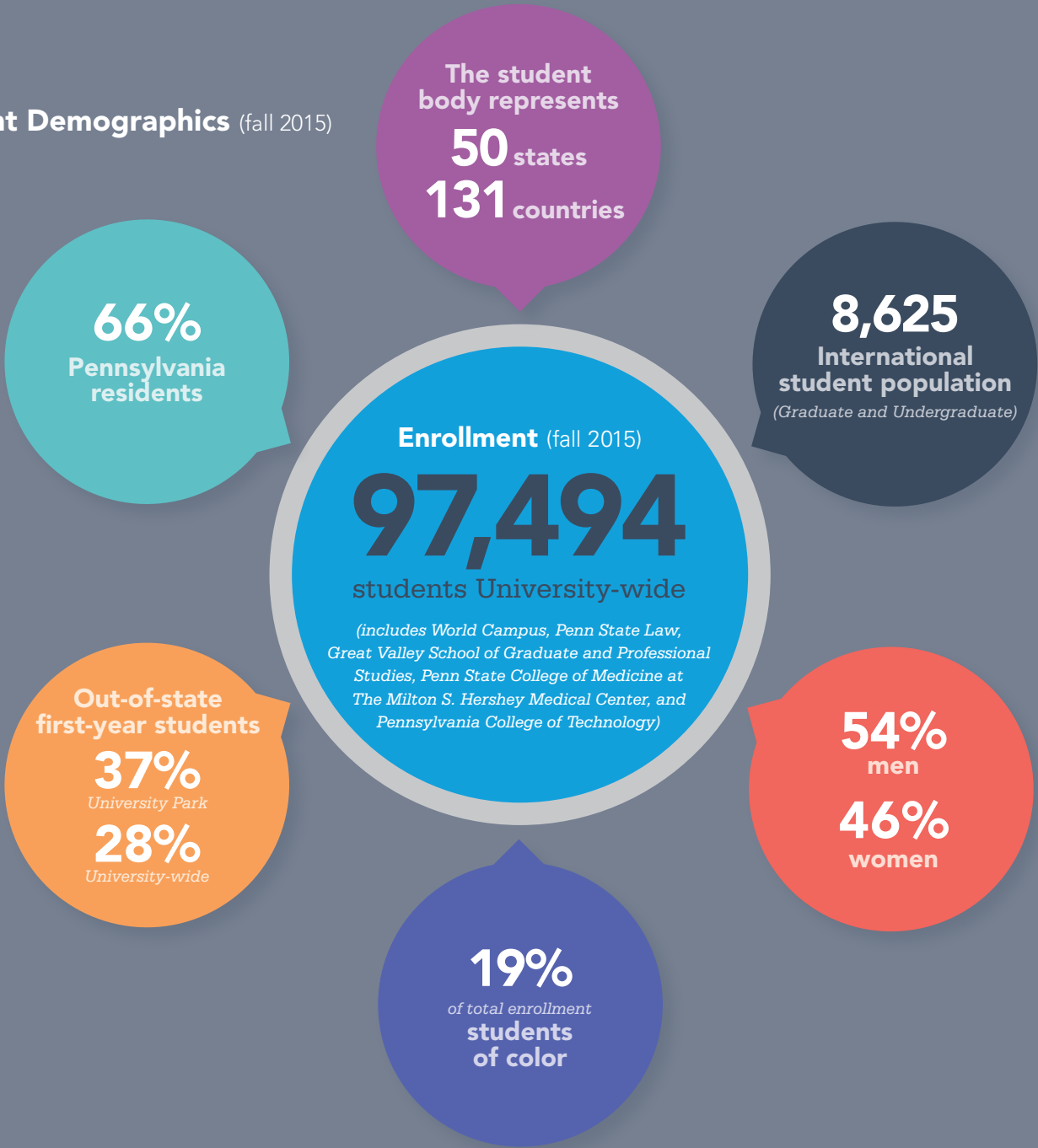
*At Penn State, success is built upon a diverse learning community dedicated to students learning, achieving, and building the futures they’ve dreamed of.*

*“When I look back in 10 or 15 years, I’m going to be really glad I came here because it challenged me, not only as a student but also as a person.”*





Student Demographics (fall 2015)



Admission (summer/fall 2015)

FIRST-YEAR  
BACHELOR'S DEGREE  
APPLICATIONS:  
**69,116**

FIRST-YEAR  
BACHELOR'S DEGREE  
STUDENTS AT  
UNIVERSITY PARK:  
**7,875**

FIRST-YEAR  
BACHELOR'S DEGREE  
STUDENTS  
UNIVERSITY-WIDE:  
**21,025**

TRANSFER  
BACHELOR'S DEGREE  
APPLICATIONS:  
**9,597**

ENTERING TRANSFER  
BACHELOR'S DEGREE  
STUDENTS AT  
UNIVERSITY PARK:  
**433**

ENTERING TRANSFER  
BACHELOR'S DEGREE  
STUDENTS  
UNIVERSITY-WIDE:  
**2,001**



## CAMPUS OFFERINGS

- a variety of rural and suburban settings
- several campuses within a short drive of Philadelphia, Pittsburgh, and other urban areas
- options for living on campus, off campus, or commuting from home
- four-year degrees offered at each campus

## THE 2+2 PLAN

Many students (more than 50 percent in a typical year) spend their first two years at one campus, then transition to another campus to finish their degree. We call it the **2+2 plan**, and it's the most common path to a Penn State degree.

A visit is the best way to learn more about any campus. To schedule a visit, contact the admissions office at the campus that interests you.

## A Penn State for You

There is only one Penn State. But that one is made up of 20 undergraduate campuses. And there is strength in those numbers.

While University Park is the largest campus and widely recognized as Penn State's flagship location, more than 30,000 students attend classes, conduct research, join clubs, and compete in team sports at campuses other than University Park. Many of those students participate in the **2+2 plan**, a way to experience all of Penn State—a small college atmosphere your first two years, the large major research university your last two.

Each campus is a unique, vibrant learning community yet still distinctly Penn State. The University's campus system offers locations that appeal to various interests—urban or rural; close to home or a little farther away—always with personal attention and a world-class education. Plus, tuition savings at campuses outside of University Park can make a Penn State degree even more affordable.

Choosing a campus that's right for you means considering what type of environment will give you the best start toward achieving a Penn State degree. It means thinking about your academic interests along with extracurricular pursuits. It can mean considering a campus location other than University Park to start—and perhaps even finish—your degree.

There is only one Penn State. But the paths leading to a Penn State degree start at 20 campuses in communities across Pennsylvania.

Find the one that's right for you.



**16:1**  
AVERAGE  
STUDENT/FACULTY  
RATIO

RANKED #1  
STUDENT-RUN  
PHILANTHROPY

**645,000+**  
ALUMNI  
NETWORK





**1** Abington  
215-881-7600  
**abington.psu.edu**  
3,966 students  
 (opening Fall 2017)

**2** Altoona  
814-949-5466,  
800-848-9843  
**altoona.psu.edu**  
3,839 students

**3** Beaver  
877-JOIN-PSU,  
(877-564-6778)  
**beaver.psu.edu**  
705 students

**4** Behrend  
814-898-6100,  
866-374-3378  
**behrend.psu.edu**  
4,327 students

**5** Berks  
610-396-6060  
**berks.psu.edu**  
2,906 students

**6** Brandywine  
610-892-1225  
**brandywine.psu.edu**  
1,457 students  
 (opening Fall 2017)

**7** DuBois  
814-375-4720,  
800-346-ROAR (7627)  
**dubois.psu.edu**  
602 students

**8** Fayette, The  
Eberly Campus  
724-430-4130  
**fayette.psu.edu**  
704 students

**9** Greater Allegheny  
412-675-9010  
**greaterallegheny.psu.edu**  
577 students

**10** Harrisburg  
717-948-6250,  
800-222-2056  
**harrisburg.psu.edu**  
4,678 students

**11** Hazleton  
570-450-3142,  
800-279-8495  
**hazleton.psu.edu**  
831 students

**12** Lehigh Valley  
610-285-5035  
**lehighvalley.psu.edu**  
893 students

**13** Mont Alto  
800-392-6173  
**montalto.psu.edu**  
893 students

**14** New Kensington  
724-334-LION (5466),  
888-968-PAWS (7297)  
**nk.psu.edu**  
656 students

**15** Schuylkill  
570-385-6252  
**schuylkill.psu.edu**  
783 students

**16** Shenango  
724-983-2803  
**shenango.psu.edu**  
508 students

**17** University Park  
814-865-5471  
**admissions.psu.edu**  
46,848 students

**18** Wilkes-Barre  
570-675-9238  
**wb.psu.edu**  
501 students

**19** Worthington  
Scranton  
570-963-2500  
**worthington  
scranton.psu.edu**  
1,034 students

**20** York  
717-771-4040  
**york.psu.edu**  
1,105 students

## SPECIAL MISSION CAMPUSES

**21** Pennsylvania  
College of  
Technology  
570-327-4761,  
800-367-9222  
**pct.edu/admissions**  
5,514 students

World Campus/  
Online Education  
814-865-5403,  
800-252-3592  
**worldcampus.psu.edu**  
12,242 students

indicates University-owned residence halls

indicates off-campus housing with residence hall personnel and programming

indicates privately owned housing nearby

## PENN STATE ADMISSIONS- OUTREACH

Philadelphia  
215-246-3500  
**philacrc@psu.edu**

Pittsburgh  
412-263-2900  
**pghcrc@psu.edu**

## REGIONAL RECRUITERS

New Jersey  
973-983-0159  
**njpsu@psu.edu**

New York City  
718-862-2965  
**nycadmissions@psu.edu**

Washington, D.C.,  
Maryland, and  
Virginia area  
814-876-0405  
**DCMDVA-admissions@psu.edu**



# MAJORS

## BACCALAUREATE (FOUR-YEAR) DEGREE PROGRAMS

*Note: Some majors are listed under more than one subject area.*

### Agriculture and Natural Resources

Agribusiness Management  
Agricultural and Extension Education  
Agricultural Science  
Animal Science  
Biological Engineering  
BioRenewable Systems  
Community, Environment,  
and Development  
Earth Science and Policy  
Earth Sciences  
Energy and Sustainability Policy\*  
Environmental Resource Management  
Environmental Science  
Environmental Studies  
Environmental Systems Engineering  
Food Science  
Forest Ecosystem Management  
Immunology and Infectious Disease  
Landscape Contracting  
Plant Sciences  
Toxicology  
Turfgrass Science  
Veterinary and Biomedical Sciences  
Wildlife and Fisheries Science

### Architecture and Environmental Design

Architectural Engineering  
Architecture  
Landscape Architecture  
Landscape Contracting

### Arts: Visual and Performing

Art, B.A.  
Art, B.F.A.  
Art Education  
Art History  
Arts Administration  
Graphic Design  
Integrative Arts  
Interdisciplinary Digital Studio  
Music  
Music Education  
Musical Arts  
Musical Theatre  
Theatre, B.A.  
Theatre, B.F.A.  
Visual Art Studies

### Biological (Life) Sciences

Biochemistry and Molecular Biology  
Biological Anthropology  
Biological Engineering  
Biology

Biomedical Engineering  
Biotechnology  
Food Science  
Forensic Science  
Immunology and Infectious Disease  
Kinesiology  
Microbiology  
Nutritional Sciences  
Plant Sciences  
Premedical-Medical (Accelerated Program)  
Premedicine  
Science  
Toxicology  
Veterinary and Biomedical Sciences

### Business

Accounting  
Agribusiness Management  
Arts Administration  
Business  
Business Economics  
Corporate Communication  
Corporate Innovation and Entrepreneurship  
Economics  
Energy and Sustainability Policy\*  
Energy Business and Finance  
Finance  
Golf Management  
Health Policy and Administration  
Hospitality Management  
Information Sciences and Technology  
Interdisciplinary Business with Engineering Studies  
International Business  
Labor and Employment Relations Management  
Management Information Systems  
Marketing  
Project and Supply Chain Management  
Recreation, Park, and Tourism Management  
Risk Management  
Supply Chain and Information Systems  
Telecommunications

### Communications

Advertising/Public Relations  
Communication  
Communication Arts and Sciences  
Communications  
Corporate Communication  
Film-Video  
Journalism  
Media Studies  
Political Science, B.S.  
Telecommunications  
Writing, Creative  
Writing, Professional

### Computer and Information Systems

Computer Engineering  
Computer Science  
Information Sciences and Technology  
Information Systems  
Management Information Systems  
Security and Risk Analysis  
Social Data Analytics  
Software Engineering

### Education

Agricultural and Extension Education  
Art Education  
Childhood and Early Adolescent Education  
Education and Public Policy  
Elementary Education  
Music Education  
Rehabilitation and Human Services  
Secondary Education (multiple options)  
Special Education  
Workforce Education and Development  
World Languages (K–12) Education (multiple options)

### Engineering

Aerospace Engineering  
Architectural Engineering  
Biological Engineering  
Biomedical Engineering  
Chemical Engineering  
Civil Engineering  
Computer Engineering  
Computer Science  
Electrical Engineering  
Electro-Mechanical Engineering Technology  
Energy Engineering  
Engineering Science  
Environmental Systems Engineering  
General Engineering  
Industrial Engineering  
Interdisciplinary Business with Engineering Studies  
Materials Science and Engineering  
Mechanical Engineering  
Mining Engineering  
Nuclear Engineering  
Petroleum and Natural Gas Engineering  
Rail Transportation Engineering  
Software Engineering  
Surveying Engineering

### Engineering Technologies

Electrical and Computer Engineering Technology  
Electrical Engineering Technology



Electro-Mechanical Engineering Technology  
 Mechanical Engineering Technology  
 Plastics Engineering Technology  
 Rail Transportation Engineering  
 Structural Design and Construction Engineering Technology

### Health Professions, Allied Health Services, and Recreational Services

Athletic Training  
 Biobehavioral Health  
 Biotechnology  
 Communication Sciences and Disorders  
 Golf Management  
 Health Policy and Administration  
 Hospitality Management  
 Kinesiology  
 Nursing  
 Nursing (for licensed RNs only)  
 Nursing (Second Degree option)  
 Nutritional Sciences  
 Physical Therapy, Accelerated, Bachelor of Science/Doctorate  
 Premedical-Medical, Accelerated  
 Premedicine  
 Recreation, Park, and Tourism Management  
 Rehabilitation and Human Services

### Humanities and Language

Asian Studies  
 Chinese  
 Classics and Ancient Mediterranean Studies  
 Communication Arts and Sciences  
 Comparative Literature  
 English  
 French and Francophone Studies  
 German  
 History  
 Humanities  
 Italian  
 Japanese  
 Latin American Studies  
 Law and Society\*  
 Letters, Arts, and Sciences  
 Medieval Studies  
 Philosophy  
 Russian  
 Spanish

Writing, Creative  
 Writing, Professional

### Interdisciplinary Studies

African American Studies  
 African Studies  
 American Studies  
 Asian Studies  
 General Arts and Sciences  
 Global Studies  
 Health Policy Administration  
 Information Sciences and Technology  
 Information Systems  
 Interdisciplinary Business with Engineering Studies  
 Jewish Studies  
 Kinesiology  
 Latin American Studies  
 Law and Society\*  
 Letters, Arts, and Sciences  
 Organizational Leadership  
 Political Science  
 Rehabilitation and Human Services  
 Security and Risk Analysis  
 Science B.S./M.B.A.  
 Social Data Analytics  
 Women's Studies

### Physical Sciences and Mathematics

Astronomy and Astrophysics  
 Chemistry  
 Earth Sciences  
 Energy and Sustainability Policy\*  
 Energy Business and Finance  
 Geobiology  
 Geography  
 Geosciences  
 Mathematics  
 Meteorology  
 Physics  
 Planetary Science and Astronomy  
 Science  
 Science B.S./M.B.A.  
 Statistics

### Social Sciences

Administration of Justice  
 Anthropology  
 Applied Behavioral Science  
 Applied Psychology  
 Archaeological Science

Biological Anthropology  
 Communication Arts and Sciences  
 Criminal Justice  
 Criminology  
 Earth Science and Policy  
 Economics  
 Energy and Sustainability Policy\*  
 Geography  
 Health Policy and Administration  
 Human Development and Family Studies  
 Information Sciences and Technology  
 Information Systems  
 International Politics  
 Labor and Employment Relations  
 Law and Society\*  
 Political Science  
 Psychological and Social Sciences  
 Psychology  
 Public Policy  
 Rehabilitation and Human Services  
 Security and Risk Analysis  
 Social Data Analytics  
 Sociology

### Division of Undergraduate Studies

An enrollment and advising unit for students who prefer to explore several academic programs before choosing a major.

### ASSOCIATE (TWO-YEAR) DEGREE PROGRAMS

Biomedical Engineering Technology  
 Business Administration  
 General Business  
 Criminal Justice  
 Electrical Engineering Technology  
 Forest Technology  
 Hotel, Restaurant, and Institutional Management  
 Human Development and Family Studies  
 Information Sciences and Technology  
 Letters, Arts, and Sciences  
 Mechanical Engineering Technology  
 Medical Laboratory Technology  
 Mining Technology  
 Occupational Therapy  
 Physical Therapist Assistant  
 Radiological Sciences  
 Science  
 Surveying Engineering Technology  
 Turfgrass Science and Management\*  
 Wildlife Technology  
 Workforce Education and Development

For the most up-to-date majors information, visit [admissions.psu.edu](https://admissions.psu.edu).

\* Online degree program only available through Penn State's World Campus

### Enrollment by degree program

Associate	5,360
Baccalaureate	74,816
Graduate/Medical/Law	14,058
Division of Undergraduate Studies with Conditions/Nondegree	3,260
Full-time	79,680
Part-time	17,814

160+  
MAJORS

6,000+  
FULL-TIME  
FACULTY



## ADMISSION TIMELINE

**September 1:** Undergraduate Admission application is available online at [admissions.psu.edu](https://admissions.psu.edu).

**Late October–May 1:** Admission decisions released.

**November 30:** Priority filing date (date to ensure application review in first round of decisions).

**January 31:** Date by which November 30 applicants will receive an admission decision.

**May 1:** National Acceptance Day—for most students, it's the date by which you have to accept your offer of admission.



## *Applying to Penn State gives you a lot to think about.*

You have to consider what you want to study.

And where—there are 20 undergraduate campuses throughout Pennsylvania from which to choose.

And when—because if you are considering University Park, you have the option of attending summer session, a six-week term that gives you a head start on your first year and allows you to make the transition from high school to college during a time when campus life is a little more relaxed.

Explore all of your options at [admissions.psu.edu](https://admissions.psu.edu).

Once you've considered what Penn State can offer you, we strongly encourage you to **file a complete application by November 30** of your senior year. For an application to be considered complete and ready for review, we need to have received:

- your submitted online application
- test scores sent to us by the testing agency (so, SAT scores come to us from the College Board; ACT scores come to us from ACT)
- official 9<sup>th</sup>, 10<sup>th</sup>, and 11<sup>th</sup> grade transcripts and your senior year schedule, sent to us by your school counselor

Some programs and campuses fill quickly, so your best chance to get what you want, when and where you want, is to apply by the November 30 recommended filing date.

## SOME THINGS TO KEEP IN MIND WHEN APPLYING

> Of all of Penn State's campuses, University Park, particularly for the fall semester, is the most competitive and selective when it comes to admission. To give yourself a second review for University Park admission, add the summer session option to your application.

The same is true for different campuses—admission criteria varies by campus. It's

always a good idea to add a first-choice campus for review along with an alternate campus choice.

And know that we will always review your application based on your preferences. That means your first review will be for your first-choice campus and term.

> Make sure the intended major you choose can be completed at the ending campus you select on your application (you can review each major and find the starting

and ending campuses at [admissions.psu.edu/majors](https://admissions.psu.edu/majors)).

> Review the high school requirements for your intended major at [admissions.psu.edu/apply/requirements/4year](https://admissions.psu.edu/apply/requirements/4year). A half-year of trigonometry, pre-calculus, or calculus is required for admission into the Smeal College of Business, the Eberly College of Science, and the colleges of Earth and Mineral Sciences, Engineering, and Information Sciences and Technology.



## Estimating your eligibility

At Penn State, an admission decision is an academic decision. Which makes sense when you think about it. You're applying to college—an academic endeavor—and, in reviewing your application, we are assessing your preparedness to be successful right from the start.

High school performance—your grades, the rigor of your schedule, and class rank, if available—accounts for about two-thirds of the application review and decision. Much of the remaining third is based upon standardized test scores (either the SAT or the ACT).

To give you an idea of how your grades and test scores align with those of successful applicants, the chart below gives a snapshot of academic credentials of students admitted for summer/fall 2016.

Keep in mind that the middle 50 percent ranges shown are not cutoffs or averages. Rather, they show what the majority of those accepted into Penn State looked like academically at the time they were offered admission. And remember that 25 percent of those offered admission were above the high end of the chart and that 25 percent were just slightly below the lower end of those ranges.

### The new SAT

Penn State accepts SAT scores for both the new SAT, which debuted in **March 2016**, and the former version of the test.

The optional writing essay is not required.

SAT subject tests are not part of the application review.



### MIDDLE 50 PERCENT OF ADMITTED STUDENTS FOR SUMMER/FALL 2016 (FOR ESTIMATING PURPOSES ONLY)

	University Park	All other campuses
HIGH SCHOOL GPA (4.0 SCALE)	3.55–3.97	3.00–3.50
COMBINED SAT*		
PRE-MARCH 2016 SAT† Critical Reading + Math	1170–1350	980–1180
NEW SAT TEST (debuted March 2016) † † Evidence-Based Reading and Writing + Math	1240–1410	1060–1250
COMPOSITE ACT	26–30	21–25

\* Scores computed based on a 1600-point scale.

† For summer/fall 2016 admission, the writing portion of the SAT administered prior to March 2016 was not used in the application review and decision.

† † The new SAT scores shown here represent conversions of the prior test's scores to fit the new test's structure and 1600-point scale.

This chart in no way represents a promise or guarantee of admission.



## Tuition and costs

The costs in the chart below cover a two-semester academic year. Students are billed for one semester at a time. Penn State offers an optional payment plan to students and their families. For more information on tuition payment, visit the Bursar's office website at [bursar.psu.edu](http://bursar.psu.edu).

### 2015–16 PENN STATE COSTS BY CAMPUS (FOR ESTIMATING PURPOSES ONLY)

PENN STATE UNIVERSITY PARK		
	PA Resident	Non-PA Resident
Tuition and Fees	\$17,514	\$31,346
Additional Estimated Costs*	\$11,926-14,926	\$11,926-14,926
<b>TOTAL</b>	<b>\$29,440-32,440</b>	<b>\$43,272-46,272</b>
<div> <div> PENN STATE ABINGTON PENN STATE ALTOONA PENN STATE BEAVER PENN STATE BERKS PENN STATE BRANDYWINE PENN STATE DUBOIS PENN STATE ERIE </div> <div> PENN STATE FAYETTE PENN STATE GREATER ALLEGHENY PENN STATE HARRISBURG PENN STATE HAZLETON PENN STATE LEHIGH VALLEY PENN STATE MONT ALTO PENN STATE NEW KENSINGTON </div> <div> PENN STATE SCHUYLKILL PENN STATE SHENANGO PENN STATE WILKES-BARRE PENN STATE WORTHINGTON SCRANTON PENN STATE YORK PENN STATE WORLD CAMPUS† </div> </div>		
	PA Resident	Non-PA Resident
Tuition and Fees	\$13,902-14,610	\$21,096-22,344
Additional Estimated Costs*	\$11,926-14,926	\$11,926-14,926
<b>TOTAL</b>	<b>\$25,828-29,536</b>	<b>\$33,022-37,270</b>
<div> *Additional Estimated Costs at ALL CAMPUSES </div> <div> Room and Meals (included above) </div> <div> Miscellaneous costs (travel, personal expenses, books, supplies, etc.) vary by individual and academic program of study. </div>		
	PA Resident and Non-PA Resident	
<b>TOTAL</b>		<b>\$11,926-14,926</b>

†All World Campus students pay the same tuition rate, regardless of residence.



1200+  
STUDENT  
CLUBS

TOP RANKED  
CAREER  
SERVICES  
OFFICE



## Applying for financial aid

Financial aid—whether in the form of loans, grants, work-study, or scholarships—can be an important part of putting a Penn State degree within reach.

The first step of the financial aid application process is to submit the Free Application for Federal Student Aid (FAFSA) on the Web at **fafsa.ed.gov**. Penn State's federal school code for the FAFSA is **003329**.

If you have filed your 2015 Federal Income Tax Return, we recommend that you use the IRS Data Retrieval Tool—available after **October 1**—on the FAFSA website to complete your FAFSA. Using the tool will save you time and increase the accuracy of your FAFSA.

To receive maximum consideration for student financial aid, complete the FAFSA on the Web by **February 15**. If you submit your FAFSA by **February 15** of your senior year, you will receive your Student Aid Award Notification, which will include all forms of student aid, in early March.

*Please note: Pennsylvania residents must submit their FAFSA by **March 1** in order to be eligible for the Pennsylvania State Grant.*

All students who are offered admission and submit a FAFSA are considered for scholarships awarded by the Office of Student Aid. Some academic colleges, campuses, and other administrative units may require separate applications. Notification of scholarship awards begins in early spring.

Visit **studentaid.psu.edu** to explore Penn State scholarships and the University's financial aid process.

### Student Financial Aid (2014-15 academic year)

Undergraduate aid recipients: **64,134**

Undergraduates receiving aid: **73 percent**

Total aid awarded to undergraduate students (excludes stipends): **\$1.005 billion**

**To estimate your costs to attend Penn State, access the College Cost Calculator at [tuition.psu.edu](http://tuition.psu.edu).**

**73%**  
**UNDERGRADS  
RECEIVE  
FINANCIAL AID**

**1 IN 4**  
**UNDERGRADS  
RECEIVE  
A UNIVERSITY  
SCHOLARSHIP**



# “WE BUILT A BRIDGE IN PANAMA.”

**ALLIE HOFFMAN**, *Civil Engineering, Bridges to Prosperity member*

*“It was super hot outside, it was pouring rain—and it ended up being one of the best days of my life.”*

*As a Civil Engineering major, Allie Hoffman focuses on building things. And through a student organization called Bridges to Prosperity, she has helped build bridges—and relationships—in rural Panama communities.*

*“There was no cement mixer truck, no machinery. We had to do everything by hand. But people from the community came out to help, and everyone was laughing and working together.”*

*“With that kind of experience, I feel like I’m prepared for anything in my first job after I graduate.”*











# NOV 30 PRIORITY DATE

**APPLICATION** for all Penn State campuses available online at [admissions.psu.edu](http://admissions.psu.edu) on **September 1**. Priority application filing date is **November 30**.

## ACADEMIC AREAS

Agricultural Sciences  
814-865-7521  
[agsci.psu.edu](http://agsci.psu.edu)

Arts and Architecture  
814-865-9523  
[artsandarchitecture.psu.edu](http://artsandarchitecture.psu.edu)

Smeal College of Business  
814-863-1947  
[smeal.psu.edu](http://smeal.psu.edu)

Communications  
814-865-1503  
[comm.psu.edu](http://comm.psu.edu)

Earth and Mineral Sciences  
814-863-2751  
[www.ems.psu.edu](http://www.ems.psu.edu)

Education  
814-865-0488  
[ed.psu.edu](http://ed.psu.edu)

Engineering  
814-863-1033  
[www.engr.psu.edu](http://www.engr.psu.edu)

Health and Human  
Development  
814-865-2156  
[hhd.psu.edu](http://hhd.psu.edu)

Information Sciences  
and Technology  
814-865-8947/866-255-8707  
[ist.psu.edu](http://ist.psu.edu)

Liberal Arts  
814-865-2545  
[www.la.psu.edu](http://www.la.psu.edu)

Nursing  
814-863-0245  
[nursing.psu.edu](http://nursing.psu.edu)

Eberly College of Science  
814-865-2609  
[science.psu.edu](http://science.psu.edu)

Schreyer Honors College  
814-863-2635  
[shc.psu.edu](http://shc.psu.edu)

Division of  
Undergraduate Studies  
814-865-7576  
[dus.psu.edu](http://dus.psu.edu)

## PENN STATE ADMISSIONS OUTREACH

Philadelphia  
[philacrc@psu.edu](mailto:philacrc@psu.edu)  
215-246-3500

Pittsburgh  
[pghcra@psu.edu](mailto:pghcra@psu.edu)  
412-263-2900

## REGIONAL RECRUITERS

New Jersey  
973-983-0159  
[njpsu@psu.edu](mailto:njpsu@psu.edu)

New York City  
718-862-2965  
[nycadmissions@psu.edu](mailto:nycadmissions@psu.edu)

Washington, D.C., Maryland,  
and Virginia area  
814-876-0405  
[DCMDVA-admissions@psu.edu](mailto:DCMDVA-admissions@psu.edu)

## OTHER

Adult Learner Programs  
and Services  
814-863-7378  
[studentaffairs.psu.edu/adults](http://studentaffairs.psu.edu/adults)

Blue Band  
814-865-3982  
[blueband.psu.edu](http://blueband.psu.edu)

Career Services  
814-865-2377  
[studentaffairs.psu.edu/career](http://studentaffairs.psu.edu/career)

Disability Services  
814-863-1807 (voice or TTY)\*  
[equity.psu.edu/ods](http://equity.psu.edu/ods)

Housing  
814-865-7543 (University Park)  
814-865-7862 (Commonwealth  
Campuses)  
[hfs.psu.edu](http://hfs.psu.edu)

Intercollegiate Athletics  
1-800-NITTANY (8269)  
[gopsusports.com](http://gopsusports.com)

Education Abroad  
814-865-7681  
[global.psu.edu](http://global.psu.edu)

International Student Advising  
814-865-6348  
[global.psu.edu](http://global.psu.edu)

Learning Edge Academic  
Program (LEAP) (*Summer  
at University Park*)  
814-863-4174  
[leap.psu.edu](http://leap.psu.edu)

Multicultural Resource Center  
814-865-1773  
[equity.psu.edu/mrc](http://equity.psu.edu/mrc)

Student Activities  
814-863-4624  
[studentaffairs.psu.edu](http://studentaffairs.psu.edu)  
  
Student Aid Office  
(financial aid and scholarships)  
814-865-6301  
[studentaid.psu.edu](http://studentaid.psu.edu)

Veterans Support  
814-863-0465  
[equity.psu.edu/veterans](http://equity.psu.edu/veterans)

## RESERVE OFFICERS' TRAINING CORPS (ROTC)

Air Force ROTC  
814-865-5453  
[airforce.psu.edu](http://airforce.psu.edu)

Army ROTC  
814-863-0368  
[army.psu.edu](http://army.psu.edu)

Naval and Marine Corps ROTC  
814-865-6289  
[nrotc.psu.edu](http://nrotc.psu.edu)

Penn State is an equal opportunity, affirmative action employer, and is committed to providing employment opportunities to minorities, women, veterans, individuals with disabilities, and other protected groups. Nondiscrimination: <http://guru.psu.edu/policies/AD85.html>

The University is committed to equal access to programs, facilities, admission, and employment for all persons. It is the policy of the University to maintain an environment free of harassment and free of discrimination against any person because of age, race, color, ancestry, national origin, religion, creed, service in the uniformed services (as defined in state and federal law), veteran status, sex, sexual orientation, marital or family status, pregnancy, pregnancy-related conditions, physical or mental disability, gender, perceived gender, gender identity, genetic information, or political ideas. Discriminatory conduct and harassment, as well as sexual misconduct and relationship violence, violates the dignity of individuals, impedes the realization of the University's educational mission, and will not be tolerated. Direct all inquiries regarding the nondiscrimination policy to Dr. Kenneth Lehman III, Vice Provost for Affirmative Action, Affirmative Action Office, The Pennsylvania State University, 328 Boucke Building, University Park, PA 16802-5901; Email: [kfl2@psu.edu](mailto:kfl2@psu.edu); Tel 814-863-0471.

**CAMPUS SECURITY CRIME STATISTICS** The Jeanne Clery Disclosure of Campus Security Policy and Campus Crime Statistics Act and Pennsylvania Act of 1988 require that crime statistics for Pennsylvania colleges and universities be made available to applicants upon request. Penn State's combined Annual Security and Annual Fire Safety Report includes statistics for the previous three years concerning reported crimes that occurred on campus, in certain off-campus buildings owned or controlled by the University, and on public property within or immediately adjacent to and accessible from the campus. The report also includes institutional policies concerning campus security, such as those concerning alcohol and drug use, crime prevention, the reporting of crimes, sexual assault, and other matters. You may obtain this information for the Penn State campus to which you are applying by accessing the website at [www.police.psu.edu/clery/](http://www.police.psu.edu/clery/). A printed copy of the report may be obtained by writing to University Police & Public Safety, The Pennsylvania State University, Eisenhower Parking Deck, University Park PA 16802-6703 or by calling 814-865-1864.

THIS PUBLICATION IS AVAILABLE IN ALTERNATIVE MEDIA ON REQUEST. Produced by the Penn State Department of University Marketing U.Ed. UAO 16-149 05-313K

