

# Extron

**2019 NEW PRODUCTS**

FIRST EDITION



# NAV PRO AVoIP

- Pixel-Perfect Video
- Ultra-Low Latency
- Incredibly Low Bitrates



 PURE3

VECTOR 4K  
SCALING

18 Gbps  
4K/60 4:4:4

4K UHD

AES67

## Uncompromised Pro AV over IP for 1G and 10G Infrastructures

NAV™ is the only no-compromise Pro AV over IP solution for distribution and switching of ultra-low latency, visually lossless video, audio, and USB 2.0 signals over Ethernet networks. Utilizing Extron's patented PURE3® codec, it delivers groundbreaking performance with visually lossless video over IP at resolutions up to 4K @ 60 Hz with 4:4:4 chroma sampling. PURE3's Intelligent Selective Streaming - ISS - leverages low motion content to achieve extremely low bitrates while maintaining visually lossless performance. The NAV Series is the only solution that offers both 1 Gbps and 10 Gbps encoders and decoders with compatibility across both systems.

### Features

- PURE3 Intelligent Selective Streaming achieves incredibly low bit rates with low motion content while maintaining visually lossless performance
- Streams video and audio over standard Ethernet networks for flexible system design and distribution
- Supports HDMI 2.0 at resolutions up to 4K/60 @ 4:4:4
- Ultra-low latency with visually lossless compression using the patented Extron PURE3® codec
- Interoperable across 1 Gbps and 10 Gbps endpoints
- Supports the AES67 audio over IP standard, providing compatibility with Extron and third-party audio DSP processors
- Enhanced security with SRTP - Secure Real Time Transport Protocol
- 802.1x port-based Network Access Control for device authentication
- Microsoft® Active Directory integration for user management
- Multiple encoders and decoders can be deployed as an IP-based video and audio matrix

To learn more, visit [extron.com/NAV](http://extron.com/NAV)



**Command and Control**



**Collaboration**



**Medical**



**Simulation**



Most codecs make compromises in either image quality, bandwidth requirements, or latency. Extron's no-compromise PURE3® codec with ISS - Intelligent Selective Streaming, offers the best of all three with its groundbreaking simultaneous delivery of high quality, efficient bitrates, and ultra-low latency.

NAV systems utilize PURE3, the patented, highly efficient wavelet-based compression technology that exceeds the performance characteristics found in standards-based compression systems. With virtually no latency, encoded video signals are processed with 4:4:4 color quantization, while maintaining original source quality and native resolution.



**Ultra-Low Latency**



**Efficient Bitrates**



**Visually Lossless**



**4:4:4 Chroma Sampling**



**Error Concealment**

NAV PRO AV OVER IP

NAV 10E 101  
10G Pro AV over IP Encoder - HDMI

The NAV 10E 101 is a Pro AV over IP encoder that streams ultra-low latency, visually lossless video and audio signals over 10 Gbps Ethernet networks at efficient bit rates. Adjustable bitrate settings facilitate transmission over 10 Gbps networks and compatibility with NAV™ 1 Gbps endpoints, increasing scalability for large deployments. The NAV 10E 101 is ideal for simulation, command and control, medical diagnostics applications, or any installation where reliable, visually lossless AV over IP video distribution is desired.

- FEATURES**
- Encodes and streams video and audio over 10 Gbps Ethernet networks
  - Supports HDMI 2.0 at resolutions up to 4K/60 @ 4:4:4
  - PURE3® Codec
  - PURE3 Intelligent Selective Streaming
  - Interoperable with 1 Gbps NAV™ endpoints
  - Ultra-low latency with visually lossless compression
  - AES67 audio support
  - Industry-standard LC connectors for fiber optic connectivity provide robust, reliable transmission with inherent immunity to outside interference

Model	Version Description	Part Number
NAV 10E 101	10G HDMI Encoder - Multimode .....	60-1572-15
NAV 10E 101	10G HDMI Encoder - Singlemode .....	60-1572-16



NAV 10E 101 - Singlemode

NAV  
PRO AVoIP

NAV 10E 501  
10G Pro AV over IP Encoder - HDMI, Ethernet, and USB

The NAV 10E 501 is a Pro AV over IP encoder that streams ultra-low latency, visually lossless video, audio, Ethernet, and USB 2.0 signals over 10 Gbps Ethernet networks at efficient bit rates. Adjustable bitrate settings facilitate compatibility with NAV™ 1 Gbps endpoints, increasing scalability for large deployments. With built-in USB 2.0 extension, the NAV 10E 501 can remotely connect to peripheral USB-enabled devices. The 1 Gbps Ethernet expansion port facilitates remote LAN connectivity and control of attached IP-enabled Ethernet-enabled devices.

- FEATURES**
- Encodes and streams video, audio, Ethernet, and USB signals over 10 Gbps Ethernet networks
  - Supports HDMI 2.0 at resolutions up to 4K/60 @ 4:4:4
  - PURE3® Codec
  - PURE3 Intelligent Selective Streaming
  - Interoperable with 1 Gbps NAV™ endpoints
  - Ultra-low latency with visually lossless compression
  - AES67 audio support
  - Industry-standard LC connectors for fiber optic connectivity provide robust, reliable transmission with inherent immunity to outside interference

Model	Version Description	Part Number
NAV 10E 501	10G HDMI, Ethernet, USB Encoder - Multimode .....	60-1572-01
NAV 10E 501	10G HDMI, Ethernet, USB Encoder - Singlemode .....	60-1572-02



NAV 10E 501 - Multimode

NAV  
PRO AVoIP

## NAV PRO AV OVER IP

### NAV E 101

#### 1G Pro AV over IP Encoder - HDMI

The NAV E 101 is a Pro AV over IP encoder that streams ultra-low latency, high quality video and audio signals over 1 Gbps Ethernet networks at extremely low bit rates. It is fully compatible with NAV™ 10 Gbps endpoints, increasing scalability for large deployments. Using a standard 1000Base-T 1 Gbps copper Ethernet infrastructure, the NAV E 101 facilitates flexible system design and cost-effective streaming over large distances, and PoE+ powering eliminates the need for external power supplies.

#### FEATURES

- Encodes and streams video and audio over 1 Gbps Ethernet networks
- Supports HDMI 2.0 at resolutions up to 4K/60 @ 4:4:4
- PURE3® Codec
- PURE3 Intelligent Selective Streaming
- Interoperable with 10 Gbps NAV™ endpoints
- Ultra-low latency with high quality video
- AES67 audio support
- PoE+ compatibility eliminates the need for a local power supply



**NAV**  
PRO AVoIP

Model	Version Description	Part Number
NAV E 101	1G HDMI Encoder .....	60-1525-12

### NAV E 501

#### 1G Pro AV over IP Encoder - HDMI, Ethernet, and USB

The NAV E 501 is a Pro AV over IP encoder that streams ultra-low latency, high quality video, audio, Ethernet, and USB 2.0 signals over 1 Gbps Ethernet networks at extremely low bit rates. It is fully compatible with NAV™ 10 Gbps endpoints, increasing scalability for large deployments. With built-in USB 2.0 extension, the NAV E 501 can remotely connect to peripheral USB-enabled devices. The 100 Mbps Ethernet expansion port facilitates remote LAN connectivity and control of attached IP-enabled Ethernet-enabled devices. Using standard 1000Base-T 1 Gbps copper Ethernet infrastructure, the NAV E 501 facilitates flexible system design and cost-effective streaming over large distances. PoE+ powering eliminates the need for external power supplies.

#### FEATURES

- Encodes and streams video, audio, Ethernet, and USB signals over 1 Gbps Ethernet networks
- Supports HDMI 2.0 at resolutions up to 4K/60 @ 4:4:4
- PURE3® Codec
- PURE3 Intelligent Selective Streaming
- Interoperable with 10 Gbps NAV™ endpoints
- Ultra-low latency with high quality video
- AES67 audio support
- PoE+ compatibility eliminates the need for a local power supply



**NAV**  
PRO AVoIP

Model	Version Description	Part Number
NAV E 501	1G HDMI, Ethernet, USB Encoder .....	60-1525-01

For updated product availability, go to [www.extron.com](http://www.extron.com)

**Europe**  
+31.33.453.4040 / +800.3987.6673  
+31.33.453.4050 FAX

**Middle East**  
+971.4.299.1800  
+971.4.299.1880 FAX

**Asia**  
+65.6383.4400 / +800.7339.8766  
+65.6383.4664 FAX

**China**  
+86.21.3760.1568 / +4000.398766  
+86.21.3760.1566 FAX

**Japan**  
+81.3.3511.7655  
+81.3.3511.7656 FAX

**Extron**

NAV PRO AV OVER IP

NAV 10SD 101  
10G Pro AV over IP Scaling Decoder - HDMI

The NAV 10SD 101 is a Pro AV over IP scaling decoder that decodes and scales ultra-low latency, visually lossless video and audio signals over 10 Gbps Ethernet networks at efficient bit rates. It is fully compatible with NAV™ 1 Gbps endpoints, increasing scalability for large deployments. With its integrated Extron Vector™ 4K scaling technology, the NAV 10SD 101 delivers best-in-class image upscaling and downscaling using Extron's exclusive, high-precision processing algorithms for exceptional scaling performance.

- FEATURES**
- Decodes video and audio from 10 Gbps Ethernet networks
  - Supports HDMI 2.0 at resolutions up to 4K/60 @ 4:4:4
  - PURE3® Codec
  - PURE3 Intelligent Selective Streaming
  - Interoperable with 1 Gbps NAV™ endpoints
  - Ultra-low latency with visually lossless compression
  - Advanced Extron Vector™ 4K scaling technology
  - AES67 audio support
  - Industry-standard LC connectors for fiber optic connectivity provide robust, reliable transmission with inherent immunity to outside interference

Model	Version Description	Part Number
NAV 10SD 101	10G HDMI Scaling Decoder - Multimode.....	60-1572-19
NAV 10SD 101	10G HDMI Scaling Decoder - Singlemode.....	60-1572-20



NAV 10SD 501 - Multimode

NAV  
PRO AVoIP

NAV 10SD 501  
10G Pro AV over IP Scaling Decoder - HDMI, Ethernet, and USB

The NAV 10SD 501 is a Pro AV over IP scaling decoder that decodes and scales ultra-low latency, visually lossless video, audio, Ethernet, and USB 2.0 signals over 10 Gbps Ethernet networks at efficient bit rates. It is fully compatible with NAV 1 Gbps endpoints, increasing scalability for large deployments. With built-in USB 2.0 extension, the NAV™ 10SD 501 can remotely connect to peripheral USB-enabled devices. The 1 Gbps Ethernet expansion port facilitates remote LAN connectivity and control of attached IP-enabled Ethernet-enabled devices. With its integrated Extron Vector 4K scaling technology, the NAV 10SD 501 delivers best-in-class image upscaling and downscaling using Extron's exclusive, high-precision processing algorithms for exceptional scaling performance.

- FEATURES**
- Decodes video, audio, Ethernet, and USB signals from 10 Gbps Ethernet networks
  - Supports HDMI 2.0 at resolutions up to 4K/60 @ 4:4:4
  - PURE3® Codec
  - PURE3 Intelligent Selective Streaming
  - Interoperable with 1 Gbps NAV™ endpoints
  - Ultra-low latency with visually lossless compression
  - Advanced Extron Vector™ 4K scaling technology
  - AES67 audio support
  - Industry-standard LC connectors for fiber optic connectivity provide robust, reliable transmission with inherent immunity to outside interference

Model	Version Description	Part Number
NAV 10SD 501	10G HDMI, Ethernet, USB Scaling Decoder-Multimode .....	60-1572-07
NAV 10SD 501	10G HDMI, Ethernet, USB Scaling Decoder-Singlemode .....	60-1572-08



NAV 10SD 501 - Multimode

NAV  
PRO AVoIP

## NAV PRO AV OVER IP

### NAV SD 101

#### 1G Pro AV over IP Scaling Decoder - HDMI

The NAV SD 101 is a Pro AV over IP scaling decoder that decodes and scales ultra-low latency, high quality video and audio signals over 1 Gbps Ethernet networks at extremely low bit rates. It is fully compatible with NAV™ 10 Gbps endpoints, increasing scalability for large deployments. With its integrated Extron Vector™ 4K scaling technology, the NAV SD 101 delivers best-in-class image upscaling and downscaling using Extron's exclusive, high-precision processing algorithms for exceptional scaling performance. Using a standard 1000Base-T 1 Gbps copper Ethernet infrastructure, the NAV SD 101 facilitates flexible system design and cost-effective streaming over large distances, and PoE+ powering eliminates the need for external power supplies.

#### FEATURES

- Decodes video and audio from 1 Gbps Ethernet networks
- Supports HDMI 2.0 at resolutions up to 4K/60 @ 4:4:4
- PURE3® Codec
- PURE3 Intelligent Selective Streaming
- Interoperable with 10 Gbps NAV™ endpoints
- Ultra-low latency with high quality video
- Advanced Extron Vector™ 4K scaling technology
- AES67 audio support
- PoE+ compatibility eliminates the need for a local power supply



**NAV**  
PRO AVoIP

Model	Version Description	Part Number
NAV SD 101	1G HDMI Scaling Decoder .....	60-1525-14

### NAV SD 501

#### 1G Pro AV over IP Scaling Decoder - HDMI, Ethernet, and USB

The NAV SD 501 is a Pro AV over IP scaling decoder that decodes and scales ultra-low latency, high quality video, audio, Ethernet, and USB 2.0 signals over 1 Gbps Ethernet networks at extremely low bit rates. It is fully compatible with NAV 10 Gbps endpoints, increasing scalability for large deployments. With built-in USB 2.0 extension, the NAV 10 SD 501 can remotely connect to peripheral USB-enabled devices. The 100 Mbps Ethernet expansion port facilitates remote LAN connectivity and control of attached IP-enabled Ethernet-enabled devices. With its integrated Extron Vector 4K scaling technology, the NAV SD 501 delivers best-in-class image upscaling and downscaling using Extron's exclusive, high-precision processing algorithms for exceptional scaling performance. Using a standard 1000Base-T 1 Gbps copper Ethernet infrastructure, the NAV SD 101 facilitates flexible system design and cost-effective streaming over large distances, and PoE+ powering eliminates the need for external power supplies.

#### FEATURES

- Decodes video, audio, Ethernet, and USB signals from 1 Gbps Ethernet networks
- Supports HDMI 2.0 at resolutions up to 4K/60 @ 4:4:4
- PURE3® Codec
- PURE3 Intelligent Selective Streaming
- Interoperable with 10 Gbps NAV™ endpoints
- Ultra-low latency with high quality video
- Advanced Extron Vector™ 4K scaling technology
- AES67 audio support
- PoE+ compatibility eliminates the need for a local power supply



**NAV**  
PRO AVoIP

Model	Version Description	Part Number
NAV SD 501	1G HDMI, Ethernet, USB Scaling Decoder .....	60-1525-03

For updated product availability, go to [www.extron.com](http://www.extron.com)

Europe  
+31.33.453.4040 / +800.3987.6673  
+31.33.453.4050 FAX

Middle East  
+971.4.299.1800  
+971.4.299.1880 FAX

Asia  
+65.6383.4400 / +800.7339.8766  
+65.6383.4664 FAX

China  
+86.21.3760.1568 / +4000.398766  
+86.21.3760.1566 FAX

Japan  
+81.3.3511.7655  
+81.3.3511.7656 FAX

**Extron**

NAV PRO AV OVER IP

NAVigator  
Pro AV over IP System Manager

NAVigator is a hardware appliance for secure management, configuration, and control of NAV™ Pro AV over IP systems. Use the user-friendly web-based NAV System Manager to configure, monitor and control, backup and restore, run diagnostics, and troubleshoot. An entry level NAVigator system supports 16 endpoints and can expand with LinkLicense to support 48, 96, or 240 devices. Multiple NAVigator units working together can support thousands of endpoints. Two isolated, independent LAN ports facilitate control from a secondary network, enabling flexible design with enhanced security, and eliminating AV traffic on the corporate network. With Extron Pro Series control integration, the NAVigator acts as a centralized communication bridge for secure control of all attached devices. The NAVigator System Manager can be PoE powered over the network.

- FEATURES**
- Securely manages, configures, and controls NAV™ Pro AV over IP systems
  - Each unit supports up to 240 NAV endpoints
  - Intuitive, web-based user interface for ease of use
  - Manages simultaneous configuration of multiple NAV devices
  - Secure encrypted communication between all endpoints
  - Power over Ethernet, or PoE, eliminates the need for a local power supply



NAVigator

NAV  
PRO AVoIP

Model	Version Description	Part Number
NAVigator	Entry Level Version for 16 Endpoints	60-1534-01
LinkLicense	NAVigator 48 Endpoints Upgrade	79-2551-02
LinkLicense	NAVigator 96 Endpoints Upgrade	79-2551-03
LinkLicense	NAVigator 240 Endpoints Upgrade	79-2551-04

Extron

NAVigator

Admin

ENDPOINTS

TIES

EDID

TOOLS

Device Tools

System Tools

MONITORING

Settings

Endpoints

Search

DISCOVER

ACTIONS

E

Encoder Device 1: Input 001

NAV 10E 101

Room A

E

Encoder Device 2: Input 002

NAV 10E 101

Room A

E

Encoder Device 3: Input 003

NAV 10E 101

Room A

E

Encoder Device 4: Input 004

NAV 10E 101

Room A

D

Decoder Device 1: Output 001

NAV 10SD 101

Room A

D

Decoder Device 2: Output 002

NAV 10SD 101

Room A

6

Extron

USA West  
+1.714.491.1500 / +800.633.9876  
+1.714.491.1517 FAX

USA East  
+1.919.850.1000 / +800.633.9876  
+1.919.850.1001 FAX

www.extron.com  
© 2019 Extron Electronics. All rights reserved.  
Prices and specifications subject to change without notice.



# Introducing Our Most Intelligent Wireless and Wired Collaboration Gateway Yet

The new Extron **ShareLink Pro 1000** is our next generation Wireless and Wired Collaboration Gateway that enables anyone to present wireless or wired content from their computers, tablets, or smartphones onto a display for easy collaboration. It features advanced technology that supports simultaneous display of up to four devices including an HDMI-connected device. The HDMI input supports wired connections from any connected source in the room. To support a wide range of environments, ShareLink Pro has collaboration and moderator modes that facilitate both open and controlled environments. When used with Extron GVE – GlobalViewer Enterprise software, multiple units can be managed across an enterprise or campus. ShareLink Pro's professional capabilities provide easy integration of AV and mobile devices into meeting, huddle, collaboration, and presentation spaces.

## Features:

- Wirelessly share content from BYOD devices
- Supports full-screen mirroring for all devices
- Enables simultaneous collaboration between wireless and wired sources
- Dedicated app provides consistent user experience across Android, Apple, and Windows platforms
- Supports 4K wireless and wired sources and displays
- View up to four pieces of content simultaneously from any user
- Centralized management for easy setup and security updates

## Works with TeamWork Show Me Cables

For easy sharing, connect an optional HDMI, DisplayPort or Mini DisplayPort Show Me® cable to your device. Press the Share button, at your fingertips, for quick device selection.



To learn more, visit [extron.com/SLPro](http://extron.com/SLPro)

Model	Version Description	Part Number
ShareLink Pro 1000	Wireless and Wired Collaboration Gateway	60-1679-01

For updated product availability, go to [www.extron.com](http://www.extron.com)

**Europe**  
+31.33.453.4040 / +800.3987.6673  
+31.33.453.4050 FAX

**Middle East**  
+971.4.299.1800  
+971.4.299.1880 FAX

**Asia**  
+65.6383.4400 / +800.7339.8766  
+65.6383.4664 FAX

**China**  
+86.21.3760.1568 / +4000.398766  
+86.21.3760.1566 FAX

**Japan**  
+81.3.3511.7655  
+81.3.3511.7656 FAX

**Extron**

# 4K Collaboration Made Simple



## Easy-to-Use 4K Systems

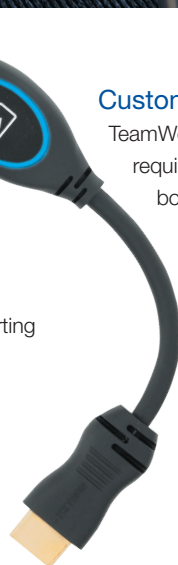
By their very nature, collaboration systems should be easy to use, with simple controls that make sharing and viewing content easy. TeamWork systems have long been recognized for their simplicity with Share buttons, which bring control right to your fingertips. Now TeamWork offers full 4K solutions with 4K HDMI, DisplayPort, and Mini DisplayPort Show Me cables and retractors connected to 4K switchers, supporting the highest-resolution sources and displays found in modern AV collaboration environments.

## Supports Wireless BYOD

BYOD wireless devices have become commonplace in modern collaboration environments. A ShareLink Wireless Collaboration Gateway added to a TeamWork configuration will easily integrate wireless connectivity, bringing support for your wireless AV and mobile devices into meeting, huddle, and presentation spaces.

## Customizable to Your Needs

TeamWork systems can be custom-configured to meet the specific requirements of your installation. Flexible offerings are available for both wireless and wired sources, connected to 4K switchers, scaling switchers, or single category cables connected to 4K displays. When multiple users collaborate around a large display, 4K systems ensure that content is clear and easy-to-view with no loss of detail for successful and effective collaboration.



## COLLABORATION

## SM Series

## Show Me Cable for TeamWork Collaboration Systems

The Extron SM Series Show Me® cables provide the user interface for HDMI, DisplayPort, Mini DisplayPort, or VGA sources in an Extron TeamWork® Collaboration System. Operation is simple and convenient: Connect the Show Me cable to your source device and press the Share button to share your content on the main presentation display. The cable meets Section 508 accessibility standards and is certified for use with AVEdge and Cable Cubby® enclosures for discreet, convenient access.

## FEATURES

- Provides the user interface for digital or analog signals in a TeamWork® collaboration system
- **NEW** Supports computer and video signals up to 4096x2160 @ 60 Hz
- Share button lights as it switches the connected source to the main presentation display
- Available in 6' (1.8 m) and 12' (3.6 m) lengths
- 24" (60 cm) control/tally pigtail for ease of installation
- Certified for use with AVEdge and Cable Cubby® enclosures

Model	Version Description	Part Number
HDMI SM	HDMI SM Cable, 6' (1.8 m)	26-683-06
HDMI SM	HDMI SM Cable, 12' (3.6 m)	26-683-12
VGA SMC/6	VGA Show Me Cable, 6' (1.8 m)	26-686-06
VGA SMC/12	VGA Show Me Cable, 12' (3.6 m)	26-686-12
DP-HDMI SM <b>NEW</b>	DP to HDMI SM Cable, 6' (1.8m)	26-705-06
DP-HDMI SM <b>NEW</b>	DP to HDMI SM Cable, 12' (3.6m)	26-705-12
MDP-HDMI SM <b>NEW</b>	Mini DP to HDMI SM Cable, 6' (1.8m)	26-706-06
MDP-HDMI SM <b>NEW</b>	Mini DP to HDMI SM Cable, 12' (3.6m)	26-706-12
Cable Cubby SM Bracket Kit	8 Cbl Bkt, CC 650UT/1200C/1202/1402/TLP Pro 725C	70-1039-05



NOW SHIPPING

## Retractor SM Series

## TeamWork Show Me Cable Retraction Modules

Retractor SM Show Me® is a patented, variable-speed cable retraction and management system providing the user interface for HDMI, DisplayPort, Mini DisplayPort, or VGA sources and PC audio and network support in TeamWork® Collaboration Systems. Connect the Show Me cable to your source and press the Share button to share your content on the main display. Retractor SM cables extend up to three feet (90 cm) and holds securely in place at the desired length. Cables retract with the press of a button. HDMI and VGA models pass source signals unprocessed. DisplayPort and Mini DisplayPort models actively adapt dual-mode DisplayPort to HDMI. The Retractor SM works with Cable Cubby® 500, Cable Cubby 650 UT, Cable Cubby 700, Cable Cubby 1202, Cable Cubby 1402, EBP 1200C, and TLP Pro 725C cable access enclosures, plus the TMK 120 R Table Mount Kit.

## FEATURES

- Provides the user interface for digital or analog signals, as well as PC audio and network connectivity in a TeamWork® collaboration system
- Convenient, easy to install cable retraction system for use with most Cable Cubby Series/2 cable access enclosures
- Simple, intuitive operation: Extend – Connect – Share
- Share button lights as it switches the connected source to the main presentation display
- Cables extend up to three feet (90 cm)
- Engineered for long life and reliability in high-utilization environments



NOW SHIPPING

Model	Version Description	Part Number
Retractor SM HDMI <b>NEW</b>	HDMI Show Me	70-1065-46
Retractor SM VGA	VGA Show Me	70-1065-15
Retractor SM DP-HDMI <b>NEW</b>	DisplayPort to HDMI Show Me	70-1065-47
Retractor SM MDP-HDMI <b>NEW</b>	Mini DP to HDMI Show Me	70-1065-48
Retractor SM PC Audio	3.5 mm Stereo Audio	70-1065-12
Retractor SM Network	Network CAT6	70-1065-13
Retractor SM Horizontal Bracket Kit	Supports Three Retractor SM Modules	70-1065-30
Retractor SM Cable Cubby Mount - Triple	CC 650UT/1200C/1202/1402/TLP Pro 725C; Holds 3	70-1065-36
Retractor SM Cable Cubby Mount - Quad	Cable Cubby 1200C/1202/1402/TLP Pro 725C; Holds 4	70-1065-37
Retractor SM Cable Cubby Mount - Triple	Cable Cubby 500/700; Holds 3 Modules	70-1065-33
Retractor SM Filler Module	With Blank & Cable Pass-through Plates	70-1065-34

For updated product availability, go to [www.extron.com](http://www.extron.com)



## Integration with Leading UC Platforms for a Seamless Conferencing Experience

Extron has developed the technology to integrate with the leading unified communication solution providers, providing a one-touch user experience for conferencing, collaboration, and control. Through our partnerships, we can extend Extron control capabilities to spaces that use Zoom, Cisco, Logitech, and many other popular providers. We offer complete system integration for convenient, centralized control of conferencing systems, audio, video, lighting, window shades, and much more.

zoom

logitech

cisco

Google

Microsoft

DOLBY

StarLeaf

Polycom™

lifesize

## COLLABORATION

## HC 402

## Meeting Space Collaboration System - Decorator-Style Wallplate

The Extron HC 402 combines video switching, scaling, signal extension, and system control into a transmitter and receiver pair at a price point that fits any application. The HC 402 features one HDMI input at the decorator-style wallplate transmitter and one HDMI input at the receiver. Advanced Extron scaling technology ensures excellent image quality with maximum detail and color accuracy. Built-in control capabilities facilitate automatic source switching, display control, and integration with occupancy sensors for an intuitive, effortless user experience. Designed for professional integration, the HC 402 low-profile wallplate transmitter and compact receiver are ideal for discreet placement in walls, lecterns, or wherever required.

## FEATURES

- Powerful solution for meeting rooms
- Decorator-style wallplate transmitter provides one HDMI input
- HDMI input on receiver is ideal for connecting a local source, such as a ShareLink® Series wireless collaboration gateway
- Signal extension for video, audio, and power up to 230 feet (70 meters) over a shielded CATx cable
- Built-in control capability
- Supports computer and video resolutions up to 1920x1200, including 1080p/60 and 2K
- Selectable output rates from 640x480 to 1920x1200, including 1080p/60 and 2K
- Auto-switching between inputs
- Stereo audio de-embedding
- Remote power capability
- Advanced scaling engine with 30-bit precision processing and motion-adaptive deinterlacing for signals up to 1080i
- Supports LinkLicense® for User Interfaces



HC 402 Transmitter



HC 402 Receiver

Model	Version Description	Part Number
HC 402	Meeting Collaboration System, Decorator Tx, White .....	42-285-01
HC 402	Meeting Collaboration System, Decorator Tx, Black .....	42-285-02
LinkLicense	Pro Series User Interface Upgrade .....	79-2546-01

## HC 402 EU &amp; MK

## Meeting Space Collaboration System - EU/MK-Style Wallplate

The Extron HC 402 EU and HC 402 MK combine video switching, scaling, signal extension, and system control into a wallplate transmitter and receiver pair at a price point that fits any application. Each pair features one HDMI input at the transmitter, and one HDMI input at the receiver. Advanced Extron scaling technology ensures excellent image quality with maximum detail and color accuracy. Built-in control capabilities facilitate automatic source switching, display control and integration with occupancy sensors for an intuitive, effortless user experience. Designed for professional integration, the HC 402 EU and HC 402 MK feature low-profile wallplate transmitters and compact receivers that are ideal for discreet placement in walls, lecterns, or wherever required.

## FEATURES

- Powerful solution for meeting rooms
- Compatible with Flex55 modules, mounting kits, and enclosures for European junction boxes
- Designed to mount into one-gang MK boxes and enclosures for use in the UK, Middle East, Singapore, and other regions using MK-type enclosure - MK model only
- HDMI input on receiver is ideal for connecting a local source, such as a ShareLink® Series wireless collaboration gateway
- Signal extension for video, audio, and power up to 230 feet (70 meters) over a shielded CATx cable
- Built-in control capability
- Supports computer and video resolutions up to 1920x1200, including 1080p/60 and 2K
- Selectable output rates from 640x480 to 1920x1200, including 1080p/60 and 2K
- Auto-switching between inputs
- Stereo audio de-embedding
- Remote power capability
- Advanced scaling engine with 30-bit precision processing and motion-adaptive deinterlacing for signals up to 1080i
- Supports LinkLicense® for User Interfaces



HC 402 EU Transmitter



HC 402 MK Transmitter



HC 402 EU/MK Receiver

Model	Version Description	Part Number
HC 402 EU	Meeting Collaboration System, EU Tx .....	42-286-01
HC 402 MK	Meeting Collaboration System, MK Tx .....	42-287-01
LinkLicense	Pro Series User Interface Upgrade .....	79-2546-01

For updated product availability, go to [www.extron.com](http://www.extron.com)

COLLABORATION

HC 403
Meeting Space Collaboration System - Decorator-Style
Wallplate Switcher

The HC 403 combines video switching, scaling, signal extension, and system control into a transmitter and receiver pair at a price point that fits any application. The HC 403 features one HDMI and one VGA input at the decorator-style wallplate transmitter, and one HDMI input at the receiver. Advanced Extron scaling technology ensures excellent image quality with maximum detail and color accuracy. Built-in control capabilities facilitate automatic source switching, display control, and integration with occupancy sensors for an intuitive, effortless user experience. Designed for professional integration, the HC 403 low-profile wallplate transmitter and compact receiver are ideal for discreet placement in walls, lecterns, or wherever required.

- FEATURES
- Powerful solution for meeting rooms
  - Decorator-style wallplate switcher/transmitter has one HDMI input and one VGA input
  - HDMI input on receiver is ideal for connecting a local source, such as a ShareLink wireless collaboration gateway
  - Signal extension for video, audio, and power up to 230 feet (70 meters) over a shielded CATx cable
  - Built-in control capability
  - Auto-switching between inputs
  - Stereo audio embedding
  - Stereo audio de-embedding
  - Remote power capability
  - Supports LinkLicense® for User Interfaces



HC 403 Transmitter



HC 403 Receiver

NOW SHIPPING

Model	Version Description	Part Number
HC 403	Meeting Collaboration System, Decorator Tx, White. ....	42-271-01
HC 403	Meeting Collaboration System, Decorator Tx, Black. ....	42-271-02
LinkLicense	Pro Series User Interface Upgrade .....	79-2546-01

HC 404 with Zoom
Meeting Space Collaboration System with Zoom Room Control

The Extron HC 404 combines video switching, scaling, signal extension, and system control into a transmitter and receiver pair that seamlessly integrates with a variety of room configurations. The HC 404 is now available pre-configured to extend control capabilities to Zoom Rooms running on an Apple® Mac. This provides a one-touch user experience for conferencing, collaboration, and AV room control. A single interface on your Extron TouchLink® Pro Series touchpanel is all you need to control every conferencing and audiovisual function.

- FEATURES
- **NEW** Enhance Zoom Room capabilities with AV switching and complete system control
  - Manage conferencing and room functions - all from the familiar Zoom Rooms interface
  - Perform analytics and manage your Zoom Rooms using GlobalViewer® Enterprise - GVE
  - Integrate room sensors to trigger lighting, shade control, and system power features for no-touch meeting startup and energy savings
  - Streamlines installation for mass deployment, saving time and money
  - Powerful solution for meeting rooms
  - Transmitter has two HDMI inputs and one VGA input
  - HDMI input on receiver is ideal for connecting a local source
  - Signal extension for video, audio, and power up to 230 feet (70 meters) over a shielded CATx cable
  - Supports LinkLicense® for User Interfaces



The TLP 1025T touchpanel with Zoom Rooms interface provides intuitive system control. TLP 1025T sold separately.



HC 404 Transmitter



HC 404 Receiver

NOW SHIPPING

Model	Version Description	Part Number
HC 404 with Zoom	Meeting Space Collaboration System - Zoom Room. ....	42-268-01Z
LinkLicense	Pro Series User Interface Upgrade .....	79-2546-01

# ISS 608



## True Seamless 4K/60 Scaling and Switching Leaps Ahead to the Next Generation

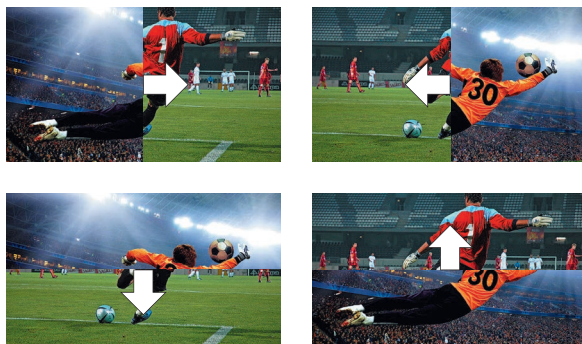
Take your live presentations to an entirely new level with dynamic, seamless switching of 4K content. The ISS 608 features six HDMI 2.0 inputs and two DisplayPort 1.2 inputs, providing full 18 Gbps support of signals up to 4K/60 with 4:4:4 chroma sampling inputs. The HDCP 2.2-compliant ISS 608 combines true seamless switching with advanced Vector™ 4K scaling technology to deliver unequaled video performance for high-end presentations and live events on even the largest of screens. Independent video buses for Preview and Program outputs and an intuitive front panel interface provide effortless on-the-fly operation.

### Professional Switching Transitions

Multiple switching and transition effects enhance the delivery of any presentation. Wipes with selectable direction and duration, a dissolve with selectable duration, and a seamless cut eliminate distracting jumps, glitches, and delays from your presentation.



Dissolve



Wipe

### Production-style Matrix Switching

Matrix Mode provides production-style switching effects for any HDMI matrix switcher. Connect two switcher outputs to inputs 1 and 2 on the ISS 608 to automatically apply a transition effect between the video sources when a switch is detected.

### Independent Preview and Program Outputs

Independent video buses for Preview and Program outputs enable the operator to confidently control the presentation by reviewing sources on a local monitor before switching them to the Program output for the viewing audience. The operator can select between cut, dissolve, and wipe transitions when switching sources to the Program output, providing a professional touch to live presentations.

### Flexible Audio Management

Embedded multi-channel HDMI and DisplayPort audio is switched, along with video, to the HDMI outputs. During a dissolve or wipe, the switcher performs an audio fade down/fade up transition for the duration of the video effect. The ISS 608 includes balanced/unbalanced analog audio outputs for sending de-embedded two-channel audio to a sound system or other destination.

To learn more, visit [extron.com/ISS](http://extron.com/ISS)

Model	Version Description	Part Number
ISS 608	Six HDMI & Two DisplayPort Inputs.....	60-1684-01

For updated product availability, go to [www.extron.com](http://www.extron.com)

**Europe**  
+31.33.453.4040 / +800.3987.6673  
+31.33.453.4050 FAX

**Middle East**  
+971.4.299.1800  
+971.4.299.1880 FAX

**Asia**  
+65.6383.4400 / +800.7339.8766  
+65.6383.4664 FAX

**China**  
+86.21.3760.1568 / +4000.398766  
+86.21.3760.1566 FAX

**Japan**  
+81.3.3511.7655  
+81.3.3511.7656 FAX

**Extron**

# The Industry's Best Presentation Switchers now with 4K/60 @ 4:4:4 Scaling



**VECTOR 4K**  
SCALING

**18 Gbps**  
4K/60 4:4:4

**ProDSP**

**DTP**  
SYSTEMS

## IN1800 Presentation Switcher Series

Combining cutting edge video and audio processing, signal extension, and networked control, the IN1800 Series of presentation switchers sets a new benchmark standard for integrated scaling and switching. This powerful scaler product family includes nine models with four, six or eight inputs, dual video outputs, and a variety of integration features that equip them for a broad range of professional AV applications.

### Series Features:

- Advanced Extron Vector 4K Scaling Engine
- Selectable rates up to 4K/60 @ 4:4:4
- Logo Keying and stored image recall
- Seamless cut and fade transition effects
- Supports HDMI 2.0 data rates up to 18 Gbps
- Dual mirrored video outputs
- DTP2 twisted pair extension
- Audio embedding and de-embedding
- Built-in standard CEC – Consumer Electronics Control capability
- Ethernet monitoring and control

**IN1804 Series** – Four inputs with contact/tally and CEC control optimized for intuitive, sophisticated collaboration.

**IN1806** – Six inputs with mirrored DTP2 and HDMI outputs and ProDSP audio, ideal for medium sized rooms.

**IN1808 Series** – All-in-one solution with eight inputs, DTP2 signal extension, ProDSP, and available IPLink Pro control processor plus 100 watt power amplifier.

To learn more, visit [extron.com/IN1800](http://extron.com/IN1800)

# IN1800 Series Features

	IN1808 IPCP SA	IN1808 IPCP MA 70	IN1808	IN1806	IN1804 DO	IN1804 DI	IN1804
Input and output rates from 640x480 to 4K/60 4:4:4	●	●	●	●	●	●	●
Logo Keying and seamless switching transitions	●	●	●	●	●	●	●
Audio embedding/de-embedding	●	●	●	●	●	●	●
Control ports	Ethernet RS-232	Ethernet RS-232	Ethernet RS-232	Ethernet RS-232	Ethernet RS-232 Contact/Tally	Ethernet RS-232 Contact/Tally	Ethernet RS-232 Contact/Tally
Video Inputs	1 DisplayPort 5 HDMI 2 DTP2	1 DisplayPort 5 HDMI 2 DTP2	1 DisplayPort 5 HDMI 2 DTP2	1 DisplayPort 5 HDMI	1 DisplayPort 3 HDMI	1 DisplayPort 2 HDMI 1 DTP2	1 DisplayPort 3 HDMI
Video Outputs (mirrored)	1 HDMI 1 DTP2	1 HDMI 1 DTP2	1 HDMI 1 DTP2	1 HDMI 1 DTP2	1 HDMI 1 DTP2	2 HDMI	2 HDMI
ProDSP Audio Signal Processing	●	●	●	●			
IPLink Pro Control Processor	●	●					
XTRA Class D 100 Watt 70V Mono Amplifier		●					
XTRA Class D 100 Watt Stereo Amplifier	●						

Compatible with XTP CrossPoint and all DTP Products



**XTP**  
SYSTEMS

**DTP**  
SYSTEMS

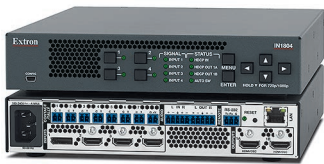
SCALERS

IN1804 Series  
Four Input 4K/60 Seamless Scaling Switchers

The Extron IN1804 is a compact four input scaler that supports signal resolutions up to 4K/60 at 4:4:4. It incorporates Extron-patented Vector 4K scaling technology specifically engineered for critical 4K signal processing applications. It features DisplayPort and HDMI inputs with available models that provide Extron DTP2 extension of 4K/60 video, audio, and control signals up to 330 feet (100 meters) over a shielded CATx cable. The IN1804 delivers the convenience of fast and reliable automatic switching, along with advanced capabilities such as audio embedding/de-embedding, seamless transition effects, and logo keying. Designed for professional AV integration, the IN1804 can be controlled and configured using Ethernet, RS-232, USB, and contact closure with tally outputs.

- FEATURES**
- Integrates DisplayPort, HDMI, and audio sources into presentation systems
  - Advanced Extron Vector™ 4K scaling engine
  - Supports signal resolutions up to 4K/60 with 4:4:4 color sampling
  - Supported HDMI 2.0 specification features include data rates up to 18 Gbps, Deep Color, and HD lossless audio formats
  - Logo image keying and display
  - Selectable seamless switching transitions
  - Auto-switching between inputs
  - HDCP 2.2 compliant
  - Available integrated DTP2 extension supports transmission of 4K/60 video, audio, and control up to 330 feet (100 meters) over a shielded CATx cable

Model	Version Description	Part Number
IN1804	Four Input 4K/60 Scaler .....	60-1699-01
IN1804 DI	Four Input 4K/60 Scaler, DTP2 Input .....	60-1699-02
IN1804 DO	Four Input 4K/60 Scaler, DTP2 Output .....	60-1699-03



IN1804



IN1804 DI



IN1804 DO

**DTP**  
SYSTEMS

**18 Gbps**  
4K/60 4:4:4

NOW SHIPPING

IN1806  
Six Input 4K/60 Seamless Presentation Switcher

The Extron IN1806 is a six input seamless presentation switcher that supports signal resolutions up to 4K/60 at 4:4:4. It incorporates Extron-patented Vector 4K seamless scaling technology specifically engineered for the most demanding applications. It features DisplayPort and HDMI inputs, an HDMI output and a mirrored Extron DTP2 output for extending 4K/60 video, audio, and control signals up to 330 feet (100 meters) over a shielded CATx cable. The IN1806 delivers excellent image quality, fast and reliable switching, along with Extron ProDSP audio processing, seamless video transition effects, logo keying, and HDMI loop-through. Designed for professional AV integration, the IN1806 can be controlled and configured over Ethernet, RS-232, or USB.

- FEATURES**
- Integrates DisplayPort, HDMI, and audio sources into presentation systems
  - DTP2 and HDMI outputs
  - Advanced Extron Vector™ 4K scaling engine
  - Supports signal resolutions up to 4K/60 with 4:4:4 color sampling
  - Logo image keying and display
  - Selectable seamless switching transitions
  - Auto-switching between inputs
  - HDCP 2.2 compliant
  - Integrated DTP2 output supports transmission of 4K/60 video, audio, and control up to 330 feet (100 meters) over a shielded CATx cable
  - Integrated audio digital signal processor with ProDSP™ 64-bit processing

Model	Version Description	Part Number
IN1806	Six Input 4K/60 Seamless Presentation Switcher.....	60-1663-01



**DTP**  
SYSTEMS

**18 Gbps**  
4K/60 4:4:4

## SCALERS

## IN1808 Series

## Eight Input 4K/60 Seamless Presentation Switchers

The Extron IN1808 is an eight input seamless presentation switcher that supports signal resolutions up to 4K/60 at 4:4:4. It incorporates Extron-patented Vector 4K seamless scaling technology specifically engineered for the most demanding applications. It features DisplayPort and HDMI inputs, HDMI output and Extron DTP2 extension to send 4K/60 video, audio, and control signals up to 330 feet (100 meters) over a shielded CATx cable. A built-in Extron IPCP Pro control processor and integrated 100 watt class D power amplifier make the IN1808 IPCP an all-in-one system design solution. The IN1808 delivers excellent image quality, fast and reliable switching, along with Extron ProDSP audio processing, seamless video transition effects, logo keying, and HDMI loop-through.

## FEATURES

- Integrates DisplayPort, HDMI, and audio sources into presentation systems
- Advanced Extron Vector™ 4K scaling engine
- Supports signal resolutions up to 4K/60 with 4:4:4 color sampling
- Logo image keying and display
- Selectable seamless switching transitions
- Integrated DTP2 extension supports transmission of 4K/60 video, audio, and control up to 330 feet (100 meters) over a shielded CATx cable
- Integrated audio digital signal processor with ProDSP™ 64-bit processing
- Available with energy efficient Class D stereo or mono amplifier:  
2 x 50 watts @ 4 ohms; 2 x 25 watts @ 8 ohms  
1 x 100 watts @ 70 volts
- Available with integrated IPCP Pro control processor



IN1808



IN1808 IPCP SA



IN1808 IPCP MA 70

**DTP**  
SYSTEMS

**18 Gbps**  
4K/60 4:4:4

Model	Version Description	Part Number
IN1808	Standard Model.....	60-1615-01
IN1808 IPCP SA	Control Processor and Stereo Amp .....	60-1615-02
IN1808 IPCP SA with LinkLicense	Control Processor and Stereo Amp, LL UI Upgrade .....	60-1615-02A
IN1808 IPCP MA 70	Control Processor and 70 V Mono Amp .....	60-1615-03
IN1808 IPCP MA 70 with LinkLicense	Control Processor and 70 V Mono Amp, LL UI Upgrade .....	60-1615-03A

## EXTENDERS

## 12G HD-SDI 101

## Cable Equalizer for 12G-SDI

The 12G HD-SDI 101 is a cable equalizer for multi-rate SDI digital video signals. It offers a convenient solution for sending multi-rate SDI digital video signals over long coaxial cable runs. The 12G HD-SDI 101 supports all common serial digital video data rates up to 11.88 Gbps, while passing HDR, up to 16 channels of embedded audio, and other ancillary data allowed by the SMPTE and ITU specifications. Used at the destination end of a cable run, automatic input equalization adds up to 984 feet (300 m) for SDI, 787 feet (240 m) for HD-SDI, 590 feet (180 m) for 3G-SDI, 295 feet (90 m) for 6G-SDI, and 230 feet (70 m) for 12G-SDI digital video, when using RG6 cable. The 12G HD-SDI 101 is housed in a one-eighth rack width, metal enclosure, providing integration-friendly mounting options into new and existing AV systems.

## FEATURES

- Automatically adapts to SMPTE and ITU digital video standards for SDI signals up to a 12G-SDI data rate
- Supports data rates from 270 Mbps to 11.88 Gbps
- Support for HDR – High Dynamic Range video
- Automatic input equalization
- Automatic output reclocking
- Passes HDR, up to 16 channels of embedded audio, and other ancillary data including closed caption and time code
- Power and Signal Presence LED



**4K UHD**

**NOW SHIPPING**

Model	Version Description	Part Number
12G HD-SDI 101	12G-SDI Cable Equalizer.....	60-1673-01

For updated product availability, go to [www.extron.com](http://www.extron.com)

Europe  
+31.33.453.4040 / +800.3987.6673  
+31.33.453.4050 FAX

Middle East  
+971.4.299.1800  
+971.4.299.1880 FAX

Asia  
+65.6383.4400 / +800.7339.8766  
+65.6383.4664 FAX

China  
+86.21.3760.1568 / +4000.398766  
+86.21.3760.1566 FAX

Japan  
+81.3.3511.7655  
+81.3.3511.7656 FAX

**Extron**

## SWITCHERS

## SW4 12G HD-SDI

## Four Input 12G-SDI Switcher

The Extron SW4 12G HD-SDI is a four-input, two-output 12G-SDI switcher. It switches multi-rate SDI video, embedded audio, and other ancillary data between four source devices and delivers simultaneous output signals to a pair of SDI displays or sink devices. The SW4 12G HD-SDI supports video resolutions up to 4K/60, HDR, and data rates up to 11.88 Gbps, including all common serial digital video data rates specified by SMPTE and ITU standards. To ensure signal integrity over long cable runs, the switcher features automatic input cable equalization and output reclocking. The SW4 12G HD-SDI offers RS-232, front panel, and auto-input switching control options, allowing integration into a variety of applications and environments.

## FEATURES

- Automatically adapts to SMPTE and ITU digital video standards for SDI signals up to a 12G-SDI data rate
- Supports video resolutions up to 4K/60
- Dual buffered output
- Automatic input cable equalization
- Automatic output reclocking
- Multiple control options including RS-232, front panel, and auto-input switching
- Front panel USB configuration port
- Internal Extron Everlast™ power supply



4K UHD

NOW SHIPPING

Model	Version Description	Part Number
SW4 12G HD-SDI	Four Input 12G-SDI Switcher .....	60-1683-01

## SW HD 4K PLUS Series

## 4K/60 HDMI Switchers with Ethernet Monitoring and Control

The Extron SW HD 4K PLUS Series of two, four, six, and eight-input HDMI switchers support 4K/60 with 4:4:4 color sampling. They are designed for video signal switching between multiple HDMI sources to a single display. The switchers are HDCP compliant, and support data rates up to 18 Gbps, HDR, 12-bit Deep Color, 3D, and HD lossless audio formats. The SW HD 4K PLUS Series is easy to operate using front panel controls or auto-switching. Ethernet, RS-232, and contact closure ports provide ample options for integration with any control system. All models feature EDID Minder®, which maintains continuous EDID communication with connected devices and ensures that the HDMI sources power up and maintain video output. The switchers provide automatic input cable equalization up to 25 feet (7.6 meters) on Extron HDMI Pro Series cable.

## FEATURES

- Supports computer and video resolutions up to 4K/60 @ 4:4:4
- Supported HDMI 2.0b specification features include data rates up to 18 Gbps, HDR, Deep Color up to 12-bit, 3D, and HD lossless audio formats.
- Ethernet monitoring and control
- EDID Minder® automatically manages EDID communication between connected devices
- Automatic input cable equalization to 25 feet (7.6 meters) when used with Extron HDMI Pro Series cable
- Compatible with TeamWork® Show Me® Cables
- Multiple control options including Ethernet, RS-232, contact closure, front panel, and auto-input switching



SW4 HD 4K PLUS



SW8 HD 4K PLUS

18 Gbps  
4K/60 4:4:4

NOW SHIPPING

Model	Version Description	Part Number
SW2 HD 4K PLUS	Two Input 4K/60 HDMI Switcher .....	60-1603-01
SW4 HD 4K PLUS	Four Input 4K/60 HDMI Switcher .....	60-1604-01
SW6 HD 4K PLUS <small>NEW</small>	Six Input 4K/60 HDMI Switcher .....	60-1605-01
SW8 HD 4K PLUS <small>NEW</small>	Eight Input 4K/60 HDMI Switcher .....	60-1606-01



# Network Button Panels

## Ethernet Connected and Fully Customizable AV Control

Extron Network Button Panels are fully-customizable AV system control interfaces for Extron Pro Series control systems and HC 400 Series products. Network Button Panels connect to a control processor using standard Ethernet to perform a wide variety of AV system functions such as display On/Off, input switching, volume control, and much more. Buttons can be easily customized using Extron Button Label Generator software or by using the online Custom Button Builder application. Network Button Panels also offer the convenience of PoE - Power over Ethernet, which allows them to receive power and communication over a single Ethernet cable.

### Six Network Button Panels - Unlimited Applications

With its freedom from distance limitations, a broad variety of button layouts, and customizable labels, there are virtually unlimited applications for Network Button Panels. They can even be combined with TouchLink Pro touchpanels and can share the same IP Link Pro control processor.

### Secure by Design

Network Button Panels are designed to enhance control system functionality; and, like all Extron Pro Series Control products, they are part of a control ecosystem specifically designed to be secure from outside intrusion and interference. You can rest assured knowing your control system is safeguarded and that Extron has you covered.

### Easy Expansion and Upgrades

Presentation environments benefit from AV control systems that can be easily modified to fit the evolving demands of their applications. Network Button Panels streamline system expansion and upgrades by using single Ethernet cable connections and sharing the powerful resources of one IP Link Pro control processor.

### A Consistent Look and a Familiar Experience

Since Network Button Panels have the same physical appearance as Extron's broad range of MediaLink controllers and eBUS Button Panels, they can be used alongside them throughout a facility while preserving a consistent look and user experience.

To learn more, visit [extron.com/NBP](http://extron.com/NBP)

NETWORK BUTTON PANELS

NBP 105 D
Network Button Panel with 5 Buttons - Decorator-Style Wallplate

The Extron NBP 105 D Network Button Panel is a fully-customizable AV system control interface for Extron Pro Series control systems and HC 400 Series products. Network Button Panels connect to a control processor using standard Ethernet. These customizable, easy-to-use control panels work in conjunction with a control processor to perform a wide variety of AV system functions such as display On/Off, input switching, volume control, and much more. The NBP 105 D offers five customizable, soft-touch buttons that are backlit for easy operation in low-light environments. Network Button Panels feature the convenience of PoE.

- FEATURES
- Fully customizable Network Button Panel integrates easily with an Extron Pro Series control system or HC 400 Series products
  - Five backlit, soft-touch buttons that can be customized using Extron's Custom Button Builder
  - Compatible with all Extron IP Link Pro control processors and HC 400 Series systems
  - Network Button Panels use standard Ethernet connectivity
  - PoE compatible



Model	Version Description	Part Number
NBP 105 D	Decorator-Style, Black and White, 5 Button.....	60-1688-01

NBP 106 D
Network Button Panel with 6 Buttons - Decorator-Style Wallplate

The Extron NBP 106 D Network Button Panel is a fully-customizable AV system control interface for Extron Pro Series control systems and HC 400 Series products. Network Button Panels connect to a control processor using standard Ethernet. These customizable, easy-to-use control panels work in conjunction with a control processor to perform a wide variety of AV system functions such as display On/Off, input switching, volume control, and much more. The NBP 106 D offers six customizable, soft-touch buttons that are backlit for easy operation in low-light environments. Network Button Panels feature the convenience of PoE.

- FEATURES
- Fully customizable Network Button Panel integrates easily with an Extron Pro Series control system or HC 400 Series product
  - Six backlit, soft-touch buttons that can be customized using Extron's Custom Button Builder
  - Compatible with all Extron IPCP Pro control processors and HC 400 Series systems
  - Network Button Panels use standard Ethernet connectivity
  - PoE compatible
  - Volume adjustment buttons with LED level indication



Model	Version Description	Part Number
NBP 106 D	Decorator-Style, Black and White, 6 Button.....	60-1817-01

NBP 108 D
Network Button Panel with 8 Buttons - Decorator-Style Wallplate

The Extron NBP 108 D Network Button Panel is a fully-customizable AV system control interface for Extron Pro Series control systems and HC 400 Series products. Network Button Panels connect to a control processor using standard Ethernet. These customizable, easy-to-use control panels work in conjunction with a control processor to perform a wide variety of AV system functions such as display On/Off, input switching, volume control, and much more. The NBP 108 D offers eight customizable, soft-touch buttons that are backlit for easy operation in low-light environments. Network Button Panels feature the convenience of PoE.

- FEATURES
- Fully customizable Network Button Panel integrates easily with an Extron Pro Series control system or HC 400 Series product
  - Eight backlit, soft-touch buttons that can be customized using Extron's Custom Button Builder
  - Compatible with all Extron IP Link Pro control processors and HC 400 Series systems
  - Network Button Panels use standard Ethernet connectivity
  - PoE compatible



Model	Version Description	Part Number
NBP 108 D	Decorator-Style, Black and White, 8 Button.....	60-1818-01

## NETWORK BUTTON PANELS

### NBP 110 D

#### Network Button Panel with 10 Buttons - Decorator-Style Wallplate

The Extron NBP 110 D Network Button Panel is a fully-customizable AV system control interface for Extron Pro Series control systems and HC 400 Series products. Network Button Panels connect to a control processor using standard Ethernet. These customizable, easy-to-use control panels work in conjunction with a control processor to perform a wide variety of AV system functions such as display On/Off, input switching, volume control, and much more. The NBP 110 D offers 10 customizable, soft-touch buttons that are backlit for easy operation in low-light environments. Network Button Panels feature the convenience of PoE.

#### FEATURES

- Ten backlit, soft-touch buttons that can be customized using Extron's Custom Button Builder
- Compatible with all Extron IP Link Pro control processors and HC 400 Series systems
- Network Button Panels use standard Ethernet connectivity
- PoE compatible



Model	Version Description	Part Number
NBP 110 D	Decorator-Style, Black and White, 10 Button .....	60-1689-01

### NBP 100

#### Network Button Panel with 6 Buttons - US 2-Gang

The Extron NBP 100 Network Button Panel is a fully-customizable AV system control interface for Extron Pro Series control systems and HC 400 Series products. Network Button Panels connect to a control processor using standard Ethernet. These customizable, easy-to-use control panels work in conjunction with a control processor to perform a wide variety of AV system functions such as display On/Off, input switching, volume control, and much more. The NBP 100 features six dual-colored backlit buttons for easy operation in low-light environments and a control knob with LED indicators for controlling various functions on virtually any device. Network Button Panels feature the convenience of PoE.

#### FEATURES

- Fully customizable Network Button Panel integrates easily with an Extron Pro Series control system or HC 400 Series products
- Six dual-color, customizable, backlit buttons
- Compatible with all Extron IP Link Pro control processors and HC 400 Series systems
- Network Button Panels use standard Ethernet connectivity
- Control knob with LED indicators can be used for volume, or for controlling specific functions on virtually any device that supports Ethernet, RS-232, or IR



Model	Version Description	Part Number
NBP 100	2-Gang, Black and White, 6 Button .....	60-1794-01

### NBP 200

#### Network Button Panel with 10 Buttons - US 3-Gang

The Extron NBP 200 Network Button Panel is a fully-customizable AV system control interface for Extron Pro Series control systems and HC 400 Series products. Network Button Panels connect to a control processor using standard Ethernet. These customizable, easy-to-use control panels work in conjunction with a control processor to perform a wide variety of AV system functions such as display On/Off, input switching, volume control, and much more. The NBP 200 features 10 dual-colored backlit buttons for easy operation in low-light environments and a control knob with LED indicators for controlling various functions on virtually any device. Network Button Panels feature the convenience of PoE.

#### FEATURES

- Fully customizable Network Button Panel integrates easily with an Extron Pro Series control system or HC 400 Series product
- Ten dual-color, customizable, backlit buttons
- Compatible with all Extron IP Link Pro control processors and HC 400 Series systems
- Network Button Panels use standard Ethernet connectivity
- PoE compatible



Model	Version Description	Part Number
NBP 200	3-Gang, Black and White, 10 Button .....	60-1795-01

For updated product availability, go to [www.extron.com](http://www.extron.com)

TOUCHLINK PRO TOUCHPANELS

TLP Pro 1025M  
10" Wall Mount Touchlink Pro Touchpanel

The Extron TLP Pro 1025M is a 10" wall mount TouchLink® Pro Touchpanel with many enhanced features. We redesigned this latest TouchLink Pro Touchpanel inside and out with a new, high-performance quad-core processor, eight times more memory, and a higher resolution, 1280x800 capacitive touchscreen built with scratch and smudge-resistant Corning® Gorilla Glass®. The TLP Pro 1025M also features the convenience of PoE - Power over Ethernet, which allows it to receive power and communication over a single Ethernet cable. It is ideal for any environment requiring a stylish, wall-mountable touchpanel with a fully-customizable interface.

- FEATURES**
- 10" capacitive touchscreen with 1280x800 resolution and 24-bit color depth
  - Contemporary design that complements the aesthetics of any environment
  - Gorilla Glass® screen is tough, scratch and smudge-resistant
  - Faster, quad-core processing and eight times more memory
  - Can be mounted in a two-gang junction box, or on a wall, lectern, or any flat surface, including glass
  - Compatible with all IP Link Pro control processors

Model	Version Description	Part Number
TLP Pro 1025M	Black - Wall Mount .....	60-1566-02
TLP Pro 1025M	White - Wall Mount .....	60-1566-03
TLP Pro 1025M NC	Black - Wall Mount, NC .....	60-1566-12
TLP Pro 1025M NC	White - Wall Mount, NC .....	60-1566-13



NOW SHIPPING

TLP Pro 1025T  
10" Tabletop TouchLink Pro Touchpanel

The Extron TLP Pro 1025T is a 10" Tabletop TouchLink® Pro Touchpanel with many enhanced features. Extron redesigned this latest TouchLink Pro Touchpanel inside and out with a new, high-performance quad-core processor, eight times more memory, a higher resolution, 1280x800 capacitive touchscreen built with scratch and smudge-resistant Corning® Gorilla Glass®, and a distinctive enclosure with a sleek, gracefully-sweeping back. The TLP Pro 1025T also features the convenience of PoE - Power over Ethernet, which allows it to receive power and communication over a single Ethernet cable. It is ideal for any environment requiring a stylish, tabletop touchpanel with a fully-customizable interface.

- FEATURES**
- 10" capacitive touchscreen with 1280x800 resolution and 24-bit color depth
  - Gorilla Glass® screen is tough, scratch, and smudge-resistant
  - Faster, quad-core processing and eight times more memory
  - Compatible with all IP Link Pro control processors
  - Power over Ethernet provides power and communication over a single Ethernet cable
  - Built-in speaker
  - JITC Certified

Model	Version Description	Part Number
TLP Pro 1025T	Black - Tabletop .....	60-1565-02
TLP Pro 1025T	White - Tabletop .....	60-1565-03
TLP Pro 1025T NC	Black - Tabletop, NC .....	60-1565-12
TLP Pro 1025T NC	White - Tabletop, NC .....	60-1565-13



NOW SHIPPING

## TOUCHLINK PRO TOUCHPANELS

### TLP Pro 725C

#### 7" Series/2 Cable Cubby TouchLink Pro Touchpanel

The TLP Pro 725C is a 7" Series/2 Cable Cubby TouchLink® Pro Touchpanel with a flip-up touchscreen in a Cable Access Enclosure. We redesigned this latest TouchLink Pro touchpanel inside and out with a high-performance quad-core processor, eight times more memory, and a high resolution, 1024x600 capacitive touchscreen built with scratch and smudge-resistant Corning® Gorilla Glass®. The TLP Pro 725C accommodates AC 100 Series and AC+USB AC power modules and Retractor Series/2 cable retraction modules, AV cables, or AAP - Architectural Adapter Plates.

#### FEATURES

- 7" capacitive flip-up touchscreen with 1024x600 resolution and 24-bit color depth
- Gorilla Glass® screen is tough, scratch, and smudge-resistant
- Faster, quad-core processing and eight times more memory
- Compatible with all IP Link Pro control processors
- Power over Ethernet provides power and communication over a single Ethernet cable
- Built-in speaker



**NOW SHIPPING**

Model	Version Description	Part Number
TLP Pro 725C	Black - w/o AC Module .....	60-1564-02
TLP Pro 725C NC	Black - w/o AC Module, NC .....	60-1564-12

### TLP Pro 725M

#### 7" Wall Mount Touchlink Pro Touchpanel

The Extron TLP Pro 725M is a 7" wall mount TouchLink® Pro Touchpanel with many enhanced features. We redesigned this latest TouchLink Pro Touchpanel inside and out with a new, high-performance quad-core processor, eight times more memory, and a higher resolution, 1024x600 capacitive touchscreen built with scratch and smudge-resistant Corning® Gorilla Glass®. The TLP Pro 725M also features the convenience of PoE - Power over Ethernet, which allows it to receive power and communication over a single Ethernet cable.

#### FEATURES

- 7" capacitive touchscreen with 1024x600 resolution and 24-bit color depth
- Gorilla Glass® screen is tough, scratch and smudge-resistant
- Faster, quad-core processing and eight times more memory
- Can be mounted in a two-gang junction box, or on a wall, lectern, or any flat surface, including glass
- Digital input allows for a connection with a variety of devices, such as sensors and switches



**NOW SHIPPING**

Model	Version Description	Part Number
TLP Pro 725M	Black - Wall Mount .....	60-1563-02
TLP Pro 725M	White - Wall Mount .....	60-1563-03
TLP Pro 725M NC	Black - Wall Mount, NC .....	60-1563-12
TLP Pro 725M NC	White - Wall Mount, NC .....	60-1563-13

### TLP Pro 725T

#### 7" Tabletop TouchLink Pro Touchpanel

The Extron TLP Pro 725T is a 7" Tabletop TouchLink® Pro Touchpanel with many enhanced features. Extron redesigned this latest TouchLink Pro Touchpanel inside and out with a new, high-performance quad-core processor, eight times more memory, a higher resolution, 1024x600 capacitive touchscreen built with scratch and smudge-resistant Corning® Gorilla Glass®, and a distinctive enclosure with a sleek, gracefully-sweeping back. The TLP Pro 725T also features the convenience of PoE - Power over Ethernet, which allows it to receive power and communication over a single Ethernet cable.

#### FEATURES

- 7" capacitive touchscreen with 1024x600 resolution and 24-bit color depth
- Gorilla Glass® screen is tough, scratch, and smudge-resistant
- Faster, quad-core processing and eight times more memory
- Compatible with all IP Link Pro control processors
- Power over Ethernet provides power and communication over a single Ethernet cable



**NOW SHIPPING**

Model	Version Description	Part Number
TLP Pro 725T	Black - Tabletop .....	60-1562-02
TLP Pro 725T	White - Tabletop .....	60-1562-03
TLP Pro 725T NC	Black - Tabletop, NC .....	60-1562-12
TLP Pro 725T NC	White - Tabletop, NC .....	60-1562-13

For updated product availability, go to [www.extron.com](http://www.extron.com)

## TOUCHLINK PRO TOUCHPANELS

## TLP Pro 525T

## 5" Tabletop TouchLink Pro Touchpanel

The Extron TLP Pro 525T is a 5" tabletop TouchLink® Pro Touchpanel. We designed this first 5" tabletop model with many enhanced features, inside and out. In addition to the new, high-performance quad-core processor and eight times more memory, it also features a high resolution, 800x480 capacitive touchscreen built with scratch and smudge-resistant Corning® Gorilla Glass® and a distinctive enclosure with a sleek, gracefully-sweeping back. The TLP Pro 525T also features the convenience of PoE - Power over Ethernet, which allows it to receive power and communication over a single Ethernet cable. It is ideal for any environment requiring a stylish, tabletop touchpanel with a fully-customizable interface.

## FEATURES

- 5" capacitive touchscreen with 800x480 resolution and 24-bit color depth
- Gorilla Glass® screen is tough, scratch, and smudge-resistant
- Faster, quad-core processing and eight times more memory
- Compatible with all IP Link Pro control processors
- Power over Ethernet provides power and communication over a single Ethernet cable



Model	Version Description	Part Number
TLP Pro 525T	Black - Tabletop.....	60-1559-02
TLP Pro 525T	White - Tabletop.....	60-1559-03
TLP Pro 525T NC	Black - Tabletop, NC.....	60-1559-12
TLP Pro 525T NC	White - Tabletop, NC.....	60-1559-13

## TLP Pro 525M

## 5" Wall Mount Touchlink Pro Touchpanel

The Extron TLP Pro 525M is a 5" wall mount TouchLink® Pro Touchpanel with many enhanced features. We redesigned this latest TouchLink Pro Touchpanel inside and out with a new, high-performance quad-core processor, eight times more memory, and a high resolution, 800x480 capacitive touchscreen built with scratch and smudge-resistant Corning® Gorilla Glass®. The TLP Pro 525M also features the convenience of PoE - Power over Ethernet, which allows it to receive power and communication over a single Ethernet cable. It is ideal for any environment requiring a stylish, wall-mountable touchpanel with a fully-customizable interface.

## FEATURES

- 5" capacitive touchscreen with 800x480 resolution and 24-bit color depth
- Contemporary design that complements the aesthetics of any environment
- Gorilla Glass® screen is tough, scratch and smudge-resistant
- Faster, quad-core processing and eight times more memory
- Can be mounted in a one-gang junction box, or on a wall, lectern, or any flat surface, including glass
- Compatible with all IP Link Pro control processors



NOW SHIPPING

Model	Version Description	Part Number
TLP Pro 525M	Black - Wall Mount.....	60-1561-02
TLP Pro 525M	White - Wall Mount.....	60-1561-03
TLP Pro 525M NC	Black - Wall Mount, NC.....	60-1561-12
TLP Pro 525M NC	White - Wall Mount, NC.....	60-1561-13

## TOUCHLINK PRO - ACCESSORIES

### VMK 1

#### VESA Mount Kit for TLP Pro 725M and TLP Pro 1025M

The Extron VMK 1 is a robust, all-metal VESA Mount Kit for the TLP Pro 725M and TLP Pro 1025M which allows the touchpanels to be installed on a VESA D-compatible standard mount. In addition to easing integration, the VMK 1 also provides a discreet means for routing the Ethernet cable out the bottom of the mount for a clean appearance. The VMK 1 is available in black.

#### FEATURES

- VESA mount a TLP Pro 725M or TLP Pro 1025M
- Supports VESA D 75mm x 75mm mounting standards
- Provides a clean cable routing path
- Durable all-metal enclosure
- Available in black

Model	Version Description	Part Number
VMK 1	VESA Mount Kit, black.....	70-1253-12



**NOW SHIPPING**

### TouchLink Adapter Mounts

#### Retrofit Kits for TLP Pro 725M and TLP Pro 1025M

TouchLink Adapter Mounts enable users to upgrade existing 7" or 10" wall mount touchpanels to a TLP Pro 725M or TLP Pro 1025M. These mounts allow easy retrofitting of our latest TouchLink Pro touchpanels into drywall openings that were created for previously released touchpanels and accessories. An alignment guide ensures the adapter mount will be centered in the cutout. When finished, the adapter mount provides a clean appearance with no visible screws.

#### FEATURES

- Upgrade to a TLP Pro 725M or TLP Pro 1025M in drywall or furniture openings previously cut for earlier released touchpanels
- TLA 2 - Compatible with TLP 710MV, TLP Pro 720M, TLP Pro 1022M, and BB 710M openings for use with a TLP Pro 725M or TLP Pro 1025M
- TLA 3 - Compatible with TLP 1000MV, TLP Pro 1020M, and BB 1000M openings for use with a TLP Pro 1025M

Model	Version Description	Part Number
TLA 2	Adapter Kit TLP Pro 725M/1025M - Black .....	70-1254-22
TLA 2	Adapter Kit TLP Pro 725M/1025M - White .....	70-1254-23
TLA 3	Adapter Kit TLP Pro 1025M - Black.....	70-1254-32
TLA 3	Adapter Kit TLP Pro 1025M - White.....	70-1254-33



TLA 2

**NOW SHIPPING**

### Angle Mount Kits

#### For TouchLink Pro Touchpanels and TouchLink Scheduling Panels

Extron Angle Mount Kits are specifically designed for our latest wall mount TouchLink Pro touchpanels and TouchLink Scheduling panels. They make it easy to mount a touchpanel at the perfect viewing angle while also securing it on a wall or other flat surface, even glass. The low-profile design maintains the sleek, stylish appearance of the touchpanel. When using an Angle Mount Kit on glass, the included glass overlay provides a clean, discreet look when viewed from the back of the installation. These kits are available in black and white and include a number of mounting accessories that aid in installation.

#### FEATURES

- Used to securely mount a TouchLink Pro touchpanel or TouchLink Scheduling panel at an angle on a wall or other flat surface, including glass
- Kit includes pre-adhered adhesive and paper template can be downloaded to simplify alignment and installation
- Angled to provide optimum viewing when mounted at ADA height
- Design allows the LED lights on either side of touchpanel to still be visible after mounting

Model	Version Description	Part Number
AMK 1	For TLP Pro 525M and TLS 525M - Black.....	70-1244-12
AMK 1	For TLP Pro 525M and TLS 525M - White.....	70-1244-13
AMK 2	For TLP Pro 725M and TLS 725M - Black.....	70-1244-22
AMK 2	For TLP Pro 725M and TLS 725M - White.....	70-1244-23
AMK 3	For TLP Pro 1025M and TLS 1025M - Black .....	70-1244-32
AMK 3	For TLP Pro 1025M and TLS 1025M - White .....	70-1244-33



TLS scheduling panel glass mounted using AMK 2 mount



AMK 1

For updated product availability, go to [www.extron.com](http://www.extron.com)

## eBUS - BUTTON PANELS

### EBP 50

#### eBUS Button Panel with 6 Buttons - US Single-Gang

The Extron EBP 50 eBUS® Button Panel is a fully-customizable AV system control interface designed for use with Extron eBUS-enabled control systems. This easy-to-use control panel connects to an IPCP Pro control processor to perform a wide variety of AV system functions such as display On/Off, input switching, volume control, and much more. The EBP 50 features six dual-colored backlit buttons for easy operation in low-light environments. eBUS button panels are linked to the control processor and to each other using a single cable that carries both power and communication. The EBP 50 mounts in a one-gang junction box, and includes black and white faceplates.

#### FEATURES

- Fully customizable button panel integrates easily with an Extron Pro Series control system
- Six dual-color, customizable, backlit buttons
- Two eBUS® ports allow for quick system expansion and upgrades
- Compatible with all Extron IPCP Pro control processors
- Use a single button panel or combine multiple button panels to accommodate a broad variety of system designs
- eBUS button panels connect to the control processor and each other using a single cable that carries both power and communication

Model	Version Description	Part Number
EBP 50	Single-Gang, Black and White, 6 Button.....	60-1670-01

### EBP 103 D

#### eBUS Button Panel with 3 Buttons - Decorator-Style Wallplate

The Extron EBP 103 D eBUS® Button Panel is a fully-customizable AV system control interface for Extron eBUS-enabled control systems. This easy-to-use control panel connects to an IPCP Pro control processor to perform a wide variety of AV system functions such as On/Off, input switching, volume control, and much more. The EBP 103 D offers three, dual-color backlit buttons for easy operation in low-light environments. eBUS button panels are linked to the control processor and to each other using a single cable that carries both power and communication. The EBP 103 D mounts in a single gang junction box, and includes black and white decorator-style wallplates and mud ring.

#### FEATURES

- Fully customizable button panel integrates easily with an Extron Pro Series control system
- Three dual-color, customizable, backlit buttons
- Two eBUS® ports allow for quick system expansion and upgrades
- Compatible with all Extron IPCP Pro control processors
- Use a single button panel or combine multiple button panels to accommodate a broad variety of system designs
- eBUS button panels connect to the control processor and each other using a single cable that carries both power and communication

Model	Version Description	Part Number
EBP 103 D	Decorator-Style, Black and White, 3 Button.....	60-1671-01

### EBP 104 EU

#### eBUS Button Panel with 4 Buttons - Flex55 and EU

The Extron EBP 104 EU eBUS® Button Panel is a fully-customizable AV system control interface for Extron eBUS-enabled control systems. This easy-to-use control panel connects to an IPCP Pro control processor to perform a wide variety of AV system functions such as display On/Off, input switching, volume control, and much more. The EBP 104 EU offers four dual-color, backlit buttons for easy operation in low-light environments. eBUS button panels are linked to the control processor and to each other using a single cable that carries both power and communication. For applications worldwide, the EBP 104 EU is compatible with Flex55 modules, mounting kits, and enclosures, as well as EU junction boxes.

#### FEATURES

- Fully customizable button panel integrates easily with an Extron Pro Series control system
- Four dual-color, customizable, backlit buttons
- Two eBUS® ports allow for quick system expansion and upgrades
- Compatible with all Extron IPCP Pro control processors
- Use a single button panel or combine multiple button panels to accommodate a broad variety of system designs
- eBUS button panels connect to the control processor and each other using a single cable that carries both power and communication

Model	Version Description	Part Number
EBP 104 EU	Flex55 and EU, Black and White, 4 Button.....	60-1672-31



**eBUS**

**NOW SHIPPING**



**eBUS**

**NOW SHIPPING**



**eBUS**

**FLEX55**

**NOW SHIPPING**

## eBUS - BUTTON PANELS

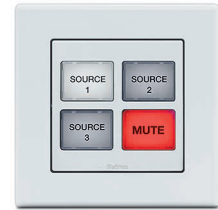
### EBP 104 MK

#### eBUS Button Panel with 4 Buttons - MK

The Extron EBP 104 MK eBUS® Button Panel is a fully-customizable AV system control interface for Extron eBUS-enabled control systems. This easy-to-use control panel connects to an IPCP Pro control processor to perform a wide variety of AV system functions such as display On/Off, input switching, volume control, and much more. The EBP 104 MK offers four dual-color, backlit buttons for easy operation in low-light environments. eBUS button panels are linked to the control processor and to each other using a single cable that carries both power and communication. The EBP 104 MK mounts into one-gang MK boxes and enclosures for use in the UK, Middle East, Singapore and other regions using MK-type enclosures.

#### FEATURES

- Fully customizable button panel integrates easily with an Extron Pro Series control system
- Four dual-color, customizable, backlit buttons
- Two eBUS® ports allow for quick system expansion and upgrades
- Compatible with all Extron IPCP Pro control processors
- Use a single button panel or combine multiple button panels to accommodate a broad variety of system designs
- eBUS button panels connect to the control processor and each other using a single cable that carries both power and communication



**eBUS**

**NOW SHIPPING**

Model	Version Description	Part Number
EBP 104 MK	MK Mount, White, 4 Button. ....	60-1672-23

## eBUS - RACK MOUNT

### EBP 108 RAAP

#### Rack Mount eBUS Button Panel with 8 Buttons

The Extron EBP 108 RAAP Rack Mount eBUS® Button Panel is a fully-customizable AV system control interface designed for use with Extron eBUS-enabled control systems. This easy-to-use control panel connects to an IPCP Pro control processor to perform a wide variety of AV system functions such as power On/Off, input switching, volume control, and much more. The EBP 108 RAAP features 8 dual-colored backlit buttons for easy operation in low-light environments and a volume control knob for smooth, precise volume adjustments. Four eBUS ports are available for easy system expansion. eBUS button panels are linked to a control processor and to each other using a single cable that carries both power and communication. The EBP 108 RAAP has openings for up to four single-space or two double-space AAP - Architectural Adapter Plates.

#### FEATURES

- Fully customizable rack mount button panel integrates easily with an Extron Pro Series control system
- Eight dual-color, customizable, backlit buttons
- Integrated four port eBUS® hub provides a common connection point for multiple eBUS devices
- Compatible with all Extron IPCP Pro control processors
- Use a single button panel or combine multiple button panels to accommodate a broad variety of system designs
- eBUS button panels connect to the control processor and each other using a single cable that carries both power and communication



**eBUS**

**NOW SHIPPING**

Model	Version Description	Part Number
EBP 108 RAAP	eBUS Rack Mount. ....	60-1710-02

For updated product availability, go to [www.extron.com](http://www.extron.com)

**Europe**  
+31.33.453.4040 / +800.3987.6673  
+31.33.453.4050 FAX

**Middle East**  
+971.4.299.1800  
+971.4.299.1880 FAX

**Asia**  
+65.6383.4400 / +800.7339.8766  
+65.6383.4664 FAX

**China**  
+86.21.3760.1568 / +4000.398766  
+86.21.3760.1566 FAX

**Japan**  
+81.3.3511.7655  
+81.3.3511.7656 FAX

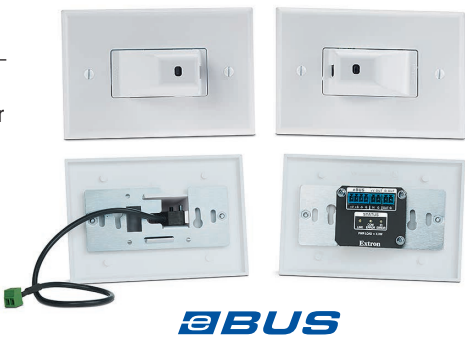
**Extron**

eBUS - CONTROL MODULE

ECM S10  
Partition Sensor Set

The Extron ECM S10 is a partition sensor set designed to automate AV system behavior based on the position of a movable wall. The set connects to any Extron Pro Series device equipped with a digital I/O or eBUS port. It uses an infrared beam to sense the position of a movable partition wall within divisible rooms. The ECM S10 receiver offers a digital output port and a 14 VDC output to provide power to the transmitter. For convenient integration, eBUS control modules, like the ECM S10 are linked to the control processor or to other eBUS devices using a single cable that carries both power and communication.

- FEATURES**
- Partition sensor set that automates system behavior based on the position of a moveable wall within divisible rooms
  - eBUS port
  - Digital output
  - 14VDC output on receiver is used to power the transmitter
  - DIP switches are used to set unique eBUS device addresses and minimize setup time
  - eBUS-enabled receiver connects to the control processor using a single cable that carries both power and communication



eBUS

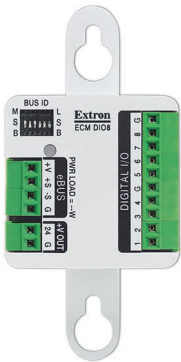
NOW SHIPPING

Model	Version Description	Part Number
ECM S10	Partition Sensor .....	60-1705-03

ECM DIO8  
eBUS Digital I/O Control Module

The Extron ECM DIO8 is a compact digital I/O control module for Extron eBUS-enabled control systems. This easy-to-use control module connects to an IPCP Pro control processor to interface with a variety of I/O devices, including sensors and contact closure buttons. The ECM DIO8 offers eight software selectable digital I/O ports and a 24 VDC output to provide power to a sensor. For convenient integration, eBUS control modules are linked to the control processor or to other eBUS devices using a single cable that carries both power and communication. The ECM DIO8 mounts in a US single gang, Flex55, EU, or MK enclosure or can be mounted to any flat surface with the included dual-lock fastener.

- FEATURES**
- Eight digital I/O ports
  - 24V output
  - eBUS port
  - DIP switches are used to set unique eBUS device addresses and minimize setup time
  - eBUS diagnostic LED provides connection status for troubleshooting
  - Compatible with all IPCP Pro control processors



eBUS

Model	Version Description	Part Number
ECM DIO8	Eight Digital I/O Ports .....	60-1662-11

## IP LINK PRO CONTROL PROCESSORS

### IPCP Pro PCS1

#### IP Link Pro Power and Device Control Processor

The Extron IPCP Pro PCS1 is a versatile, high-performance IP Link Pro control processor with AC power and device control. This unique control processor combines a variety of AV control ports and the ability to supply and manage device power. Featuring IEC power connectors and rated for 100-240 VAC, 50/60 Hz operation, the IPCP Pro PCS1 provides worldwide compatibility. The compact IPCP Pro PCS1 features advanced security standards and Gigabit Ethernet, which ensures compatibility with multiple TouchLink® Pro touchpanels using a standard network infrastructure. It also supports Extron LinkLicense®, which further enhances the capabilities of Extron Pro Series control systems. The IPCP Pro PCS1 is an ideal choice for controlling multiple devices and control signal types, as well as device power within an AV system.

#### FEATURES

- Supports TouchLink Pro touchpanels, eBUS® button panels, and Network Button Panels
- Supports secure industry standard communications protocols
- Supports LinkLicense®
- Intelligent current sensing with alarm
- Outlet status retention during power loss
- One male AC input and one female AC output - both using IEC connections
- Easily-accessible, front panel circuit breaker adds over-current protection for remotely controlled connected devices
- One bidirectional RS-232 serial port with software handshaking
- One IR/Serial port for one-way control of external devices
- Three digital I/O ports
- eBUS port for connecting eBUS button panels and accessories



**IP LINK PRO**

**NOW SHIPPING**

Model	Version Description	Part Number
IPCP Pro PCS1	IP Link Pro Control Processor.....	60-1618-01
IPCP Pro PCS1	IP Link Pro Control Proc., LL UI Upgrade.....	60-1618-01A

## WORKSPACE CONTROLLER

### HD CTL 100

#### Workspace Controller

The Extron HD CTL 100 is a low-cost, easy-to-use workspace controller designed for automated display control in small meeting rooms and huddle spaces. When an active signal is connected to the HDMI input, the HD CTL 100 automatically turns on the display and selects the correct input via CEC control. For further flexibility, the unit easily integrates with the Extron OCS 100 occupancy sensor to automatically power the system on when users enter the room. Connecting a ShareLink wireless collaboration gateway adds support for wireless BYOD convenience, providing effective collaboration and content sharing from a wide variety of mobile devices. The compact enclosure makes the HD CTL 100 ideal for placement wherever needed.

#### FEATURES

- Easy automation for the modern workspace:
  - Plug and Play
  - No remotes to lose
  - No buttons to press
- Automated display control via unidirectional RS-232, IR, or CEC
- Supports computer and video resolutions up to 4K/60 @ 4:4:4
- Fully-configurable using HD CTL 100 Software
- Four digital I/O ports
- 24 V DC output to power devices such as occupancy sensors
- One HDMI input port and one HDMI output port
- CEC – Consumer Electronics Control capability
- One IR/Serial port for one-way control of external devices



**NOW SHIPPING**

Model	Version Description	Part Number
HD CTL 100	Workspace Controller.....	60-1633-01

For updated product availability, go to [www.extron.com](http://www.extron.com)

**Europe**  
+31.33.453.4040 / +800.3987.6673  
+31.33.453.4050 FAX

**Middle East**  
+971.4.299.1800  
+971.4.299.1880 FAX

**Asia**  
+65.6383.4400 / +800.7339.8766  
+65.6383.4664 FAX

**China**  
+86.21.3760.1568 / +4000.398766  
+86.21.3760.1566 FAX

**Japan**  
+81.3.3511.7655  
+81.3.3511.7656 FAX

**Extron**



## Extron Room Scheduling

### Book a Room the Easy Way

We have simplified the room booking experience with Extron Room Scheduling and our new TLS Series scheduling panels. This system connects directly to Microsoft Exchange, Office 365, Google Calendar, and other calendar services. Users can reserve rooms with a couple taps on the panel or from their mobile device. Free Room Agent software makes setup a breeze, allowing you to customize the touchpanel interface with the meeting options you need. Multiple mounting choices are available for the touchpanels, including on-wall, in-wall, as well as secure mounting to almost any flat surface, including glass or granite.

#### FEATURES

- **NEW** Supports integration with CollegeNET 25Live calendar service
- Make on-demand reservations from the touchpanel, computer, or any smartphone or tablet that connects to Microsoft® Exchange, Office 365™, Google Calendar, and CollegeNET 25Live
- A variety of TLS TouchLink Scheduling panel sizes and mounting options are available to ensure the right look for any application
- Room Agent software provides easy integration with Microsoft Exchange 2007, 2010, 2013, and 2016, as well as Office 365 for convenient scheduling right from Outlook
- No annual subscription or maintenance fees
- Deploy a single touchpanel, or multiple touchpanels with similar settings very easily
- All communication between the touchpanel and calendar server is encrypted and secure

- Room usage data provides insight into trends and activity — Each touchpanel includes a downloadable Scheduling Activity file that lets you generate analytics on usage, activity patterns, and trends using data from across the enterprise.
- Provides service account and impersonation support — TLS panels can be configured using a service account with Exchange or Office 365, simplifying administrative tasks.

#### COMING SOON

- RoomAware Workspace Automation features:
  - RoomAware™ Workspace Automation acknowledges your scheduled meeting and automatically turns on all your devices, saving precious time by preparing the room prior to your arrival
  - Use the touchpanel to find available rooms nearby
  - Combine room scheduling touchpanel features with in-room control systems
- Supports integration with EMS Campus calendar service

To learn more, visit [extron.com/RS](http://extron.com/RS)

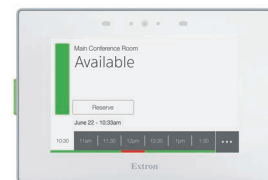
## TLS 525M

### 5" Wall Mount TouchLink Scheduling Panel

#### UNIQUE FEATURES

- 5" capacitive edge-to-edge Gorilla Glass touchscreen is scratch and smudge-resistant
- High resolution, vibrant 800x480 touchscreen
- Supports optional RWM 1 Recessed Wall Mount and SMK 1 Surface Mount Kit

Model	Version Description	Part Number
TLS 525M	Black, Wall Mount, Scheduling.....	60-1561-102
TLS 525M	White, Wall Mount, Scheduling .....	60-1561-103



**NOW SHIPPING**

## ROOM SCHEDULING

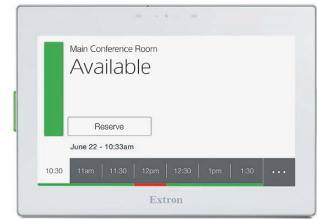
### TLS 725M

#### 7" Wall Mount TouchLink Scheduling Panel

##### UNIQUE FEATURES

- 7" capacitive edge-to-edge Gorilla Glass® touchscreen is scratch and smudge-resistant
- High resolution, vibrant 1024x600 touchscreen
- Rear-facing light bars reflect off the mounting surface providing enhanced visibility of room status
- Supports optional RWM 2 Recessed Wall Mount and SMK 2 Surface Mount Kit

Model	Version Description	Part Number
TLS 725M	Black, Wall Mount, Scheduling.....	60-1563-102
TLS 725M	White, Wall Mount, Scheduling .....	60-1563-103



**NOW SHIPPING**

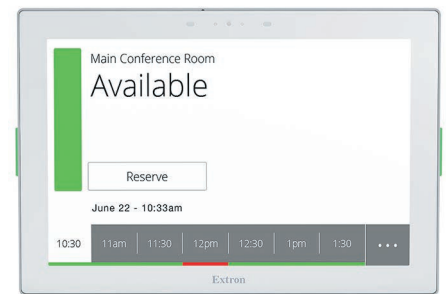
### TLS 1025M

#### 10" Wall Mount TouchLink Scheduling Panel

##### UNIQUE FEATURES

- 10" capacitive edge-to-edge Gorilla Glass® touchscreen is scratch and smudge-resistant
- High resolution, vibrant 1280x800 touchscreen
- Rear-facing light bars reflect off the mounting surface, providing enhanced visibility of room status
- Supports optional RWM 2 Recessed Wall Mount and SMK 3 Surface Mount Kit

Model	Version Description	Part Number
TLS 1025M	Black, Wall Mount, Scheduling.....	60-1566-102
TLS 1025M	White, Wall Mount, Scheduling .....	60-1566-103



**NOW SHIPPING**

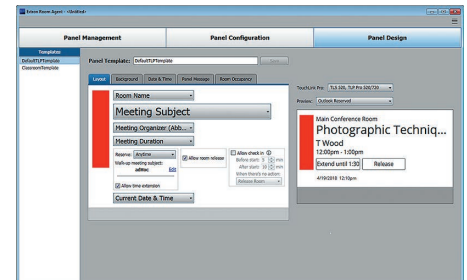
## Room Agent

### Free Room Booking Software for Extron Room Scheduling

Room Agent™ software allows you to easily customize our family of TLS – TouchLink Scheduling panels to display the specific meeting information you need for your enterprise. With Room Agent, no programming or intermediate server is required, as the scheduling panels simply become a client of Microsoft® Exchange, Office 365™, Google Calendar™, and other calendar services. Connect the touchpanel to your computer, open the free Room Agent software, fill in the required fields that compose the user interface, and you're done. Customization options allow fields to be shown or hidden, depending on user preference.

##### FEATURES

- **NEW** Supports integration with CollegeNET 25Live calendar service
- **NEW** Support for TLS 525M and 1025M TouchLink Scheduling panels
- Use 5", 7", and 10" TLS TouchLink Scheduling panels for booking a room and displaying meeting information
- Room Agent software provides easy integration with Microsoft Exchange and Office 365 for convenient scheduling right from Outlook
- Make on-demand reservations from the touchpanel, computer, or any device that connects to Microsoft Exchange, Office 365, Google Calendar, and CollegeNET 25Live
- **COMING SOON** RoomAware Workspace Automation acknowledges your scheduled meeting and automatically turns on all your devices, saving precious time by preparing the room prior to your arrival
- **COMING SOON** Supports integration with EMS Campus calendar service



For updated product availability, go to [www.extron.com](http://www.extron.com)

Europe  
+31.33.453.4040 / +800.3987.6673  
+31.33.453.4050 FAX

Middle East  
+971.4.299.1800  
+971.4.299.1880 FAX

Asia  
+65.6383.4400 / +800.7339.8766  
+65.6383.4664 FAX

China  
+86.21.3760.1568 / +4000.398766  
+86.21.3760.1566 FAX

Japan  
+81.3.3511.7655  
+81.3.3511.7656 FAX

**Extron**

## CONTROL ACCESSORIES

## KNX 100G

## KNX IP Interface

The Extron KNX 100G is a compact IP KNX Interface that provides control and monitoring of multiple building management disciplines with an Extron Pro Series control system. The KNX 100G provides bi-directional communication to control and receive feedback on the status of KNX devices. This enables control of lighting systems, window shades, and room climate control from a TouchLink Pro touchpanel or MediaLink Plus controller. Adding an Extron KNX 100G Interface to an Extron Pro Series control system is easy, requiring minimal configuration using ETS, Engineering Tool Software. Implement KNX control quickly by configuring the required KNX group addresses using the Extron Global Configurator device driver or Global Scriptor® module for the KNX 100G.

## FEATURES

- Ethernet to KNX interface
- Easily add KNX building management controls to any Extron Pro Series control system
- Supports up to 5 simultaneous KNXnet/ IP tunneling connections
- Quickly implement KNX Building Management controls by configuring KNX group addresses in Global Configurator Plus and Global Configurator Professional configuration software
- Requires minimal device configuration using the ETS Software
- Compact enclosure mounts to an industry-standard DIN rail



Certified for select countries.  
Please visit [www.extron.com/knx](http://www.extron.com/knx)  
for more information

**NOW SHIPPING**

Model	Version Description	Part Number
KNX 100G	KNX IP Interface.....	60-1796-01

## SOFTWARE

## Global Scriptor

## Integrated Development Environment for Extron Control Systems Programming

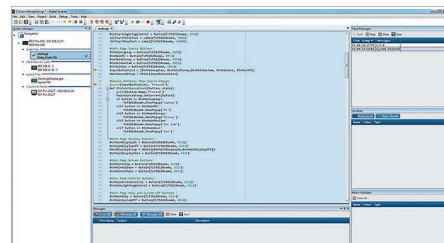
Global Scriptor® is Extron's powerful and versatile control system programming software. This feature-rich integrated development environment is used to program Extron Pro Series control systems, and utilizes the easy-to-learn Python scripting language. Global Scriptor includes an Extron-exclusive Python library - ControlScript®, that is designed to increase the productivity of AV programmers through incorporating functions used in AV control system projects, as well as helpful documentation, reference material, and sample code. Extron built Global Scriptor and the ControlScript Python libraries with programmers in mind. Working together, these components make it easier than ever to develop refined and innovative programmable control systems.

## NEW FEATURES – VERSION 2.2.0

- Efficiently deploy systems by creating and uploading a program with only the primary control processor online
- Support for the latest Extron control system hardware
- Enhanced support for IP Link Pro control processors with dedicated AV LAN ports
- Deployment mode for technicians and installers

## FEATURES

- Develop AV control system programming using clean and extensible Python 3.5
- Develop, debug and deploy from a single software environment
- View user interfaces within the IDE and generate code from information in the user interface layout



## SOFTWARE

### Global Configurator Plus and Global Configurator Professional Powerful Configuration Software for AV Control Systems

Global Configurator® is Extron's most powerful and versatile control system configuration software. It is designed to be used exclusively with Extron Pro Series Control products, including TouchLink® Pro touchpanels, IP Link® Pro control processors, MediaLink® Plus controllers, and eBUS® button panels. Powerful features, such as conditional logic, variables, and macros provide greater flexibility for more elaborate control system designs. Global Configurator has two modes. Global Configurator Plus is ideal for smaller applications requiring one control processor and one control interface. Global Configurator Professional is suited for applications requiring multiple control processors, enhanced functionality, and advanced configuration. Access to Global Configurator Professional requires ECP Certification.

#### NEW FEATURES – VERSION 3.2.0

- Efficiently deploy systems by building and uploading a configuration with only the primary control processor online
- Support for the latest Extron control system hardware
- Enhanced support for IP Link Pro control processors with dedicated AV LAN ports
- SSH Driver Support
- System Export

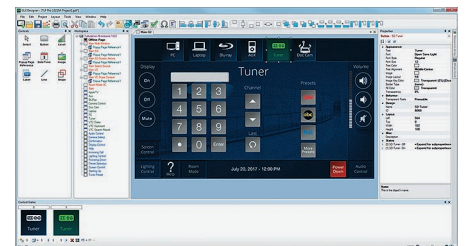


### GUI Designer Free Design Software for User Interfaces

Extron GUI Designer is a software application used for the design, creation, and maintenance of Extron TouchLink® Pro user interfaces. Begin with ready-to-use design templates and resource kits, or start from scratch and build your own layout using our comprehensive software. The available design elements are fully customizable and matched carefully to popular AV system applications. In many cases, all the input sources, display control, and environmental settings are already in place. These resources are fully developed and include complete, detailed documentation.

#### NEW FEATURES – VERSION 1.8.0

- Support for the latest Extron TLP Pro touchpanels
- Enhanced font management
- Project font selection
- Workflow improvements and enhancements



For updated product availability, go to [www.extron.com](http://www.extron.com)

#### Europe

+31.33.453.4040 / +800.3987.6673  
+31.33.453.4050 FAX

#### Middle East

+971.4.299.1800  
+971.4.299.1880 FAX

#### Asia

+65.6383.4400 / +800.7339.8766  
+65.6383.4664 FAX

#### China

+86.21.3760.1568 / +4000.398766  
+86.21.3760.1566 FAX

#### Japan

+81.3.3511.7655  
+81.3.3511.7656 FAX

# XPA ULTRA

## POWER AMPLIFIERS



## Extron Amplifiers Go Ultra

### Ultra Efficient · Ultra Cool · Ultra Reliable · Ultra Power

More than a decade ago Extron pioneered the use of Class D amplifiers in AV applications. We have continuously reinvented Class D with our meticulous approach to engineering and the development of unique, patented technologies, designed to address the particular requirements of AV workflows and integrations. And now we introduce our next great line of amplifiers, including the XPA U 358 Series, with eight channels at 35 watts, the XPA U 1004 Series, with four channels at 100 watts, and the XPA U 1002 Series, with two channels at 100 watts. These XPA Ultra models provide the flexibility and exceptional performance needed for today's AV installations.

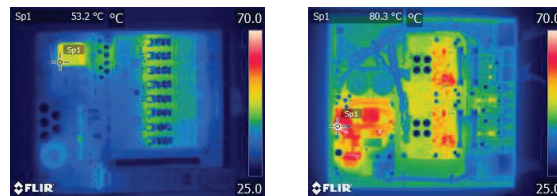
#### World's First 8 Channel Half-Rack Amplifier

Packing eight channels into a half-rack unit, the XPA U 358 lets you install sixteen 35 watt channels in just one rack space. For applications that need more power, the XPA U 1004 can put sixteen 100 watt channels in only two rack spaces. Because XPA Ultra amplifiers run so cool, you don't need to waste empty rack spaces for ventilation.

#### Cool Operation

XPA Ultra amplifiers run cooler than other Class D amplifiers. This extends the life of the unit and eliminates the wasted blank rack space required by other amplifiers for ventilation.

#### Thermal Imaging



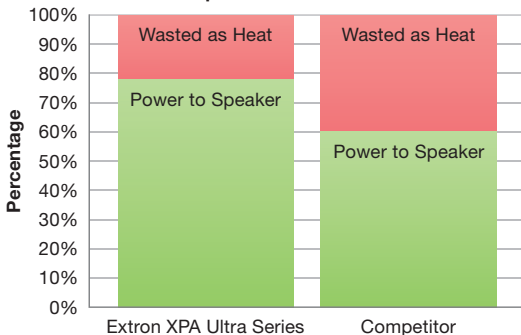
Extron

Competitor

#### Power Efficiency

All XPA Ultra amplifiers operate at an industry-leading efficiency greater than 75%. This reduces waste heat, resulting in reduced cooling and energy costs.

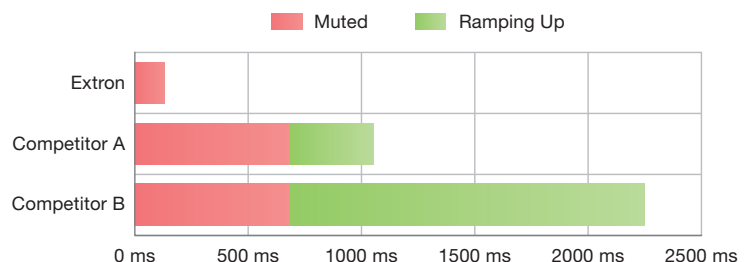
#### Power to Speaker vs. Power Wasted as Heat



#### Fast Wake from Standby

When audio is detected while in standby, the XPA Ultra wakes up completely in less than 100 milliseconds, ensuring the beginning of audio is not cut off.

#### Wake Up Time from Standby (milliseconds)



To learn more, visit [extron.com/XPAU](http://extron.com/XPAU)



# World's First 8 Channel Half-Rack Amplifier

## Ultra Channel Density Lets You Deliver More Channels in Less Space

### Engineered for Your Success

Packing eight channels of amplification into a half-rack unit required some serious high-level engineering. With exceptional channel density, the XPA U 358 lets you install sixteen 35 watt channels in just one rack space. For applications that need more power, four XPA U 1004 amplifiers can provide sixteen 100 watt channels in a mere two rack spaces. Rack space is often at a premium, and Extron XPA Ultra amplifiers let you install more channels into less space than ever before.

### No Wasted Rack Space

Because XPA Ultra amplifiers are incredibly efficient and run so cool, you don't need to waste empty rack spaces for ventilation. Competing models require blank space above or below and may even require extra rack space for a separate 70V transformer. The illustrations below show that you can install 16 channels of 8 ohm or 70V/100V amplification in 1U of rack space with Extron XPA Ultra, while the competition requires two or four times the space.

### Sixteen channels at 8 ohms



### Sixteen channels at 70 or 100 volts



## AUDIO PRODUCTS

## XPA U 358

Eight Channel Low and High Impedance Amplifiers  
35 Watts Per Channel

The Extron XPA U 358 is an ENERGY STAR qualified audio power amplifier delivering eight 35 watt channels in a half rack, 1U, convection cooled, plenum rated enclosure. The XPA U 358 delivers 35 watts into 8 or 4 ohms while the XPA U 358-70V delivers 35 watts into 70 volt systems. The XPA U 358 offers unprecedented channel density and ability to install units without using rack spaces for ventilation, conserving precious rack space. It features a highly efficient advanced Class D amplifier design with power factor correction and ultra low inrush current.

## FEATURES

- 35 watts rms output power per channel at 8 ohms, 4 ohms, or 70/100V
- ENERGY STAR® qualified amplifier
- Extron Patented CDRS™ - Class D Ripple Suppression
- Convection cooled, fanless operation - can be stacked without extra rack space for ventilation
- **NEW** Eight channels in a 1U, half rack width enclosure - rack mount hardware included
- **NEW** Defeatable auto-standby with fast wake up



NOW SHIPPING

Model	Version Description	Part Number
XPA U 358	Eight Channel Amp, 35 watts at 8 or 4 ohms .....	60-1759-01
XPA U 358-70V	Eight Channel Amp, 35 watts at 70 volts .....	60-1759-02
XPA U 358-100V	Eight Channel Amp, 35 watts at 100 volts .....	60-1759-12

## XPA U 358C

Eight Channel Combo Amplifier  
35 Watts Per Channel

The Extron XPA U 358C is an ENERGY STAR qualified audio power amplifier delivering eight 35 watt channels in a half rack, 1U, convection cooled, plenum rated enclosure. The XPA U 358C simultaneously delivers 35 watts into four channels at 8 or 4 ohms and 35 watts into four channels at 70 volts. The XPA U 358C offers unprecedented channel density and ability to install units without using rack spaces for ventilation, conserving precious rack space. It features a highly efficient advanced Class D amplifier design with power factor correction and ultra low inrush current.

## FEATURES

- Four channels of 35 watts at 8 ohms or 4 ohms
- Four channels of 35 watts at 70/100V
- ENERGY STAR® qualified amplifier
- Extron Patented CDRS™ - Class D Ripple Suppression
- Convection cooled, fanless operation - can be stacked without extra rack space for ventilation
- **NEW** Eight channels in a 1U, half rack width enclosure - single and dual rack mount hardware included
- **NEW** Defeatable auto-standby with fast wake up



NOW SHIPPING

Model	Version Description	Part Number
XPA U 358C-70V	70V Eight Channel Combo Amp, 35 watts per channel ...	60-1762-01
XPA U 358C-100V	100V Eight Channel Combo Amp, 35 watts per channel ...	60-1762-11

## XPA U 1004

Four Channel Low and High Impedance Amplifiers  
100 Watts Per Channel

The Extron XPA U 1004 is an ENERGY STAR qualified audio power amplifier delivering four 100 watt channels in a half rack, 1U, convection cooled, plenum rated enclosure. The XPA U 1004 delivers 100 watts into 8 or 4 ohms while the XPA U 1004-70V delivers 100 watts into 70 volt systems. The XPA U 1004 Series provides the ability to install units without using rack spaces for ventilation, conserving precious rack space. It features a highly efficient advanced Class D amplifier design with power factor correction and ultra low inrush current.

## FEATURES

- 100 watts rms output power per channel at 8 ohms, 4 ohms, or 70/100V
- ENERGY STAR® qualified amplifier
- Extron Patented CDRS™ - Class D Ripple Suppression
- Convection cooled, fanless operation - can be stacked without extra rack space for ventilation
- **NEW** Four channels in a 1U, half rack width enclosure - single and dual rack mount hardware included
- **NEW** Defeatable auto-standby with fast inaudible wake up



NOW SHIPPING

Model	Version Description	Part Number
XPA U 1004	Four Channel Amp, 100 watts at 8 or 4 ohms .....	60-1760-01
XPA U 1004-70V	Four Channel Amp, 100 watts at 70 volts .....	60-1760-02
XPA U 1004-100V	Four Channel Amp, 100 watts at 100 volts .....	60-1760-12

## AUDIO PRODUCTS

**XPA U 1004C****Four Channel Combo Amplifier  
100 Watts Per Channel**

The Extron XPA U 1004C is an ENERGY STAR qualified audio power amplifier delivering four 100 watt channels in a half rack, 1U, convection cooled, plenum rated enclosure. The XPA U 1004C simultaneously delivers 100 watts into two channels at 8 or 4 ohms and 100 watts into two channels at 70 volts. The XPA U 1004C offers unprecedented channel density and the ability to install units without using rack spaces for ventilation, conserving precious rack space. It features a highly efficient advanced Class D amplifier design with power factor correction and ultra low inrush current.

**FEATURES**

- Two channels of 100 watts at 8 ohms or 4 ohms  
Two channels of 100 watts at 70/100V
- ENERGY STAR® qualified amplifier
- Extron Patented CDRS™ - Class D Ripple Suppression
- Convection cooled, fanless operation - can be stacked without extra rack space for ventilation
- **NEW** Four channels in a 1U, half rack width enclosure - single and dual rack mount hardware included
- **NEW** Defeatable auto-standby with fast wake up



Model	Version Description	Part Number
<b>XPA U 1004C-70V</b>	70V Four Channel Combo Amp, 100 watts per channel . . .	60-1852-01
<b>XPA U 1004C-100V</b>	100V Four Channel Combo Amp, 100 watts per channel . .	60-1852-11

**XPA U 1002****Two Channel Low and High Impedance Amplifiers  
100 Watts Per Channel**

Extron's XPA U 1002 is an ENERGY STAR qualified, audio power amplifier delivering two 100 watt channels in a half rack, 1U, convection cooled, plenum rated enclosure. The XPA U 1002 delivers 100 watts into 8 or 4 ohms while the XPA U 1002-70V and XPA U 1002-100V deliver 100 watts into 70 volt and 100 volt systems, respectively. The XPA U 1002 offers the ability to install units without using rack spaces for ventilation, conserving precious rack space. It features a highly efficient advanced Class D amplifier design featuring power factor correction and ultra low inrush current.

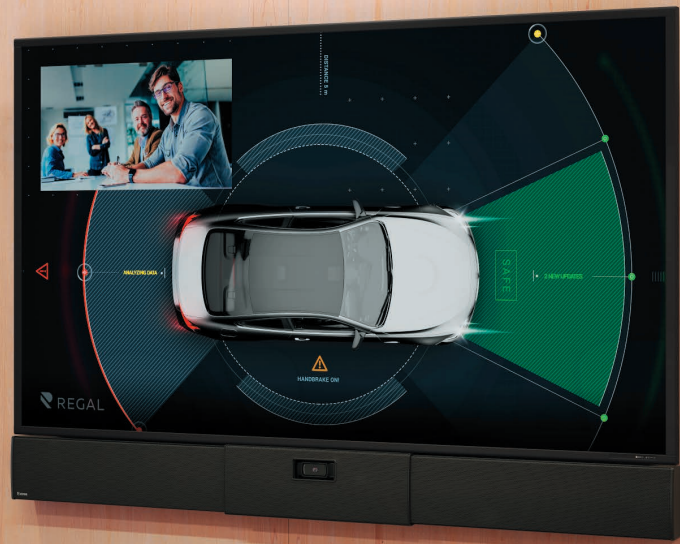
**FEATURES**

- 100 watts rms output power per channel
- ENERGY STAR® qualified amplifier
- Extron Patented CDRS™ - Class D Ripple Suppression
- Convection cooled, fanless operation - can be stacked without extra rack space for ventilation
- Two channels in a 1U, half rack width enclosure - rack mount hardware included
- **NEW** Defeatable auto-standby with fast wake up



Model	Version Description	Part Number
<b>XPA U 1002</b>	Two Channel Amp, 100 watts at 8 or 4 ohms . . . . .	60-1761-01
<b>XPA U 1002-70V</b>	Two Channel Amp, 100 watts at 70 volts . . . . .	60-1761-02
<b>XPA U 1002-100V</b>	Two Channel Amp, 100 watts at 100 volts . . . . .	60-1761-12

For updated product availability, go to [www.extron.com](http://www.extron.com)



# The Industry's First Adjustable Width Sound Bar

The SB 33A powered sound bar is a flexible solution for enhancing the audio in collaboration spaces. Featuring an adjustable-width design, our new sound bar can be customized to precisely match the width of the display, offering a high performing solution that looks great in any space. The SB 33A accommodates most USB webcams, while options are available to mount a PTZ camera or have no camera at all.

With an ENERGY STAR® qualified amplifier and carefully optimized drivers, the SB 33A is well suited for small to medium size spaces that require exceptional speech intelligibility and high quality reproduction of program audio. A variety of mounting and camera options are available, providing an adaptable audio solution for today's collaboration environments.

## SB 33 A Adjustable Width Sound Bar

### FEATURES

- Provides enhanced audio quality for collaboration spaces
- Adjustable width to perfectly match any display from 46" to 80"
- Configurable for an internal webcam, a shelf-mounted PTZ camera, or no camera
- 3" (76 mm) full-range drivers with a tuned port for bass extension, optimized for teleconferencing and program playback
- Frequency range: 100 Hz to 20 kHz
- Internal Extron ENERGY STAR qualified Class D amplifier
- Compatible with VCM series volume and mute controllers when used without a control system



SB 33 A holds a USB webcam (camera not included)



SB 33 A with optional PTZ shelf (camera not included)



SB 33 A with optional blank center grille

To learn more, visit [extron.com/SB](http://extron.com/SB)

Model	Version Description	Part Number
SB 33 A 46-55	Adjustable Width Sound Bar for 46" to 55" Displays.....	60-1737-11
SB 33 A 55-65	Adjustable Width Sound Bar for 55" to 65" Displays.....	60-1737-12
SB 33 A 65-70	Adjustable Width Sound Bar for 65" to 70" Displays.....	60-1737-13
SB 33 A 75-80	Adjustable Width Sound Bar for 75" to 80" Displays.....	60-1737-14
SMK V SB 33	VESA Mounting Kit for SB 33 A Sound Bar.....	70-1192-01
SAK BCG SB 33	Blank Center Grille for SB 33 A Sound Bar.....	70-1229-01
SAK PTZ SB 33	PTZ Camera Shelf for SB 33 A Sound Bar.....	70-1260-01

## AUDIO PRODUCTS

### SF 26PT

#### SoundField 6.5" Two-Way Pendant Speaker

The Extron SF 26PT is a two-way pendant loudspeaker for high performance program or music playback in high-ceiling and open-ceiling applications. Taking inspiration from modern pendant lighting, the SF 26PT offers an architecturally clean, patent pending design that complements the aesthetic of contemporary interiors. The SF 26PT is available in black or white and is paintable to fit in with any décor. The included Extron-exclusive PendantConnect™ speaker cable combines the speaker wires and steel support cables within a single outer jacket, providing a finished installation that is clean and secure. The UL listed SF 26PT offers both direct 8 ohm and 70/100 volt operation and is voiced similarly to the Extron SF 26CT ceiling speaker for consistency and installation flexibility in mixed ceiling environments.

#### FEATURES

- 6.5" (165 mm) long throw woofer
- 3/4" (19 mm) ferrofluid-cooled dome tweeter
- Frequency range: 65 Hz to 22 kHz
- 8 ohm direct or 70/100 volt operation
- 65 watts continuous pink noise
- 130 watts continuous program
- Architecturally clean, unobtrusive design using Extron exclusive PendantConnect speaker cable
- Similar voicing to the Extron SF 26CT ceiling speaker



**NOW SHIPPING**

Model	Version Description	Part Number
SF 26PT	6.5" Two-Way Pendant Speaker, Pair - Black .....	60-1752-02
SF 26PT	6.5" Two-Way Pendant Speaker, Pair - White .....	60-1752-03
PCC-2 18/30	Pre-cut PendantConnect, SF 26PT, 30' (9 m) Black .....	26-730-30
PCC-2 18/500	PendantConnect™, SF 26PT, 500' (152 m) Spool White ...	22-275-02
SMK A 4C	4-pack Speaker Aircraft Cable Kit for the SF 26PT .....	70-1250-04
SMK C SF 26PT	SF 26PT Ceiling Surface Mount Kit, Black .....	70-1251-02

### SF 3PT

#### SoundField 3" Full-Range Pendant Speaker

The Extron SF 3PT is a pendant loudspeaker with a 3" (76 mm) full-range driver for speech reinforcement and music playback in high-ceiling and open-ceiling applications. Taking inspiration from modern pendant lighting, the SF 3PT offers an architecturally clean, patent pending design that complements the aesthetic of contemporary interiors. The SF 3PT is available in black or white and is paintable to fit in with any décor. Included with the SF 3PT is Extron's exclusive PendantConnect™ PCC-1 speaker cable that combines the speaker wires and a steel safety cable within a single outer jacket, providing a finished installation that is clean and secure. The UL listed SF 3PT offers both direct 8 ohm and 70/100 volt operation and is voiced similarly to the Extron SF 3CT LP for consistency mixed ceiling environments.

#### FEATURES

- 3" (76 mm) full-range driver
- Frequency range: 110 Hz to 20 kHz
- 116° conical dispersion
- 8 ohm direct or 70/100 volt operation
- 16 watts continuous pink noise
- 32 watts continuous program
- Architecturally clean, patent pending design using Extron exclusive PendantConnect speaker cable
- **NEW** Removable Grille



**NOW SHIPPING**

Model	Version Description	Part Number
SF 3PT	3" Pendant Speaker Pair - Black - Removable Grille .....	60-1736-12
SF 3PT	3" Pendant Speaker Pair - White - Removable Grille .....	60-1736-13
PCC-1 18/20	Pre-cut PendantConnect, SF 3PT, 20' (6 m) Black .....	26-722-20
PCC-1 18/500	PendantConnect, SF 3PT, 500' (152 m) Spool White .....	22-270-02

For updated product availability, go to [www.extron.com](http://www.extron.com)

**Europe**  
+31.33.453.4040 / +800.3987.6673  
+31.33.453.4050 FAX

**Middle East**  
+971.4.299.1800  
+971.4.299.1880 FAX

**Asia**  
+65.6383.4400 / +800.7339.8766  
+65.6383.4664 FAX

**China**  
+86.21.3760.1568 / +4000.398766  
+86.21.3760.1566 FAX

**Japan**  
+81.3.3511.7655  
+81.3.3511.7656 FAX

**Extron**



## Engineering Challenge: Design a Powerful In-Ceiling Subwoofer That Won't Rattle the Ceiling

Extron President Andrew Edwards presented our speaker design team in Raleigh, North Carolina with a daunting design challenge. He wanted them to engineer a ceiling-mounted subwoofer to complement our line of ceiling speakers. The new subwoofer had to be plenum rated, small enough to fit above the ceiling, light enough to install easily, and must not rattle the structure. It needed to have sufficient low frequency response and power handling capability for listeners to experience the full impact of their content. The engineers responded with an innovative design that fulfills every one of Andrew's requirements.

We are pleased to present the **SF 10C SUB SoundField In-Ceiling Subwoofer**. Measuring just 15 inches tall and weighing only 38 pounds, it easily fits above the ceiling. A novel suspended-by-wire mounting design completely isolates the subwoofer from the ceiling grid. A 10-inch driver within a 4th order bandpass, plenum-rated enclosure, delivers powerful, room-filling bass.

### SF 10C SUB SoundField In-Ceiling Subwoofer

#### FEATURES

- Works with ceiling speakers to dramatically improve the system bass response, extending the low frequency range down to 25 Hz
- 10" (25.4 cm) low frequency driver
- 400 watts continuous pink noise 800 watts continuous program
- UL 2043 rating allows placement in the plenum space, hidden from view
- Direct 8 ohm operation avoids the low frequency distortion commonly associated with high impedance connections through a transformer
- Included steel suspension cable doubles as hoisting cable to raise the subwoofer into place during installation
- A ceiling speaker grille and C-ring are included to provide everything necessary for a finished installation that matches other ceiling speakers in the room



**NOW SHIPPING**

To learn more, visit [extron.com/SUB](http://extron.com/SUB)

Model	Version Description	Part Number
SF 10C SUB	10" SoundField In-Ceiling Subwoofer	60-1610-01
SMK F SF 10C	SF 10C SUB Floor Standing Kit	70-1247-01



**AES67**

**DANTE DOMAIN  
MANAGER READY**

**Ring  
Central**

**AVAYA**  
DevConnect  
Tested

**CISCO**

**VOIP.ms**

# Powerful New Capabilities for Extron Network Connected Audio Products

## Dante Domain Manager

For system designs requiring enterprise level security and network management, Extron offers a lineup of Dante products that support DDM – Dante Domain Manager. This enables user authentication, role-based security, and seamless expansion of Dante systems over any network infrastructure.

## AES67 Support

Select Dante-enabled products support AES67 for connectivity between AES67 capable devices on the network. This standard provides interoperability between the predominant Audio over IP protocols in use today.

## Expanding VoIP Compatibility

DMP 128 Plus C V and DMP 128 Plus C V AT models offer compatibility with many enterprise VoIP systems, with new compatibility being added regularly. The most recent additions, Ring Central and VoIP.ms, address the growing requirement for compatibility with cloud based VoIP systems.

## More Channels of AEC

DMP 128 Plus C models now include twelve channels of AEC, up from eight. Extron Acoustic Echo Cancellation can now be used on more channels for optimal intelligibility in situations that challenge AEC performance, including double-talk, and the use of wireless microphones on the near end.

Model	Version Description	Part Number
<b>DMP 128 Plus AT</b>	12x8 ProDSP Processor w/Dante .....	60-1511-10
<b>DMP 128 Plus C</b>	12x8 ProDSP Processor w/AEC. ....	60-1512-01
<b>DMP 128 Plus C V</b>	12x8 ProDSP Processor w/AEC and VoIP .....	60-1513-01
<b>DMP 128 Plus C AT</b>	12x8 ProDSP Processor w/AEC and Dante .....	60-1512-10
<b>DMP 128 Plus C V AT</b>	12x8 ProDSP Processor w/AEC, VoIP, and Dante .....	60-1513-10
<b>DMP 128 C P AT</b>	12x8 ProDSP Proc. w/AEC, POTS and Dante .....	60-1179-10
<b>AXI 02 AT</b>	Two Output Dante Audio Interface .....	60-1753-01
<b>AXI 22 AT D</b>	2 In, 2 Out Dante Audio Interface - Decorator, Blk. ....	60-1517-02
<b>AXI 22 AT D</b>	2 In, 2 Out Dante Audio Interface - Decorator, Wht .....	60-1517-03
<b>AXI 22 AT</b>	2 In, 2 Out Dante Audio Interface .....	60-1627-01
<b>AXI 44 AT</b>	4 In, 4 Out Dante Audio Interface .....	60-1628-01
<b>NetPA 1001-70V AT</b>	70 V Mono Amp with Dante - 100 Watts .....	60-1501-01
<b>NetPA 502 AT</b>	Two Channel Amp with Dante - 50 Watts/Ch .....	60-1500-01

For updated product availability, go to [www.extron.com](http://www.extron.com)

**Europe**  
+31.33.453.4040 / +800.3987.6673  
+31.33.453.4050 FAX

**Middle East**  
+971.4.299.1800  
+971.4.299.1880 FAX

**Asia**  
+65.6383.4400 / +800.7339.8766  
+65.6383.4664 FAX

**China**  
+86.21.3760.1568 / +4000.398766  
+86.21.3760.1566 FAX

**Japan**  
+81.3.3511.7655  
+81.3.3511.7656 FAX

**Extron**

XTP SYSTEMS

XTP II CP 4o HD AT 4K PLUS  
HDMI 4K/60 Output Boards with Dante

The Extron XTP II CP 4o HD AT 4K PLUS Output Board provides local HDMI connectivity for data rates up to 18 Gbps and features Dante® digital audio output. It complies with HDCP 2.2 and supports video signals at resolutions up to 4K/60 with 4:4:4 chroma sampling. The Dante digital audio output enables audio transport of up to four stereo audio signals over a network using standard Internet protocols. The output also supports AES67 and Audinate® Dante Domain Manager and Dante Controller software. Integration of Dante audio out facilitates XTP® system expansion and enhanced flexibility by allowing the audio outputs to be paired with Extron's Dante-enabled audio processing products and increasing overall audio output capability. The XTP II CP 4o HD AT 4K PLUS output board is compatible with all XTP CrossPoint® matrix switchers.

- FEATURES**
- Four HDMI outputs and four Dante stereo audio channels
  - Supports computer and video resolutions up to 4K/60 @ 4:4:4
  - HDCP 2.2 compliant
  - Support for HDR - High Dynamic Range video
  - **NEW** Dante® audio output enables transport over a local area network using standard Internet protocols
  - **NEW** AES67 audio support
  - **NEW** Compatible with Dante Controller software
  - **NEW** Dante Domain Manager ready
  - Supported HDMI 2.0b specification features include data rates up to 18 Gbps, HDR, Deep Color up to 12-bit, 3D, and HD lossless audio formats
  - Comprehensive EDID management
  - Compatible with all XTP II CrossPoint and XTP CrossPoint matrix switchers



**XTP**  
SYSTEMS

18 Gbps  
4K/60 4:4:4

**Dante®**

**NOW SHIPPING**

Model	Version Description	Part Number
XTP II CP 4o HD AT 4K PLUS	Four Output Board, HDMI 4K/60 w/ Dante Out. ....	70-1182-01

XTP CP 4K I/O Boards  
XTP 4K Transmitter and Receiver Boards with RS-232 and IR Insertion

The Extron XTP CP 4K Input and Output Boards enable extension of video, audio, bidirectional control, and Ethernet over a shielded CATx cable. These XTP® I/O boards are HDCP 2.2 compliant and support video signals at resolutions up to 4K. To streamline integration, embedded digital audio signals can be routed independently. Ethernet extension along with RS-232 and IR insertion provide LAN access and remote AV device control. Signals can be sent up to 330 feet (100 meters) over shielded twisted pair cable. Available in four-input and four-output models, each twisted pair port can supply remote power to XTP endpoints. The XTP CP 4K I/O boards support signal routing and extension over long distances within XTP Systems®.

- FEATURES**
- Extends video, audio, bidirectional RS-232 and IR, and Ethernet up to 330 feet (100 meters) over a shielded CATx cable
  - Supports computer and video resolutions up to 4K
  - HDCP 2.2 compliant
  - **NEW** Remote power to all XTP transmitters and receivers
  - Bidirectional RS-232 and IR insertion for AV device control
  - Supported HDMI specification features include data rates up to 10.2 Gbps, Deep Color up to 12-bit, 3D, and HD lossless audio formats
  - Comprehensive EDID management
  - Ethernet extension
  - Compatible with all XTP II CrossPoint and XTP CrossPoint matrix switchers



XTP CP 4i 4K



XTP CP 4o 4K

**XTP**  
SYSTEMS

4K UHD

Model	Version Description	Part Number
XTP CP 4i 4K	Four Input Board, XTP - 26W Remote Power Capable . . . .	70-940-31
XTP CP 4o 4K	Four Output Board, XTP - 26W Remote Power Capable. . . .	70-943-31

## XTP SYSTEMS

**XTP T USW 103 4K****Three Input Switcher with HDMI Output and Integrated XTP 4K Transmitter**

The XTP T USW 103 4K is a three-input transmitter for extending DisplayPort, HDMI or VGA, audio, bidirectional control, and Ethernet over a shielded CATx cable. This HDCP 2.2-compliant transmitter supports video signals at resolutions up to 4K and provides a local HDMI output. For operation in unmanaged locations, it features automatic switching between inputs with selectable prioritization. Incoming analog signals are digitized and separate analog stereo audio can be embedded onto the output signal. Ethernet extension and insertion of bidirectional RS-232 and IR provide LAN access and remote AV device control. Signals can be sent up to 330 feet (100 meters) over shielded twisted pair cable. The XTP T USW 103 4K supports remote power and is ideal for XTP Systems® that require long-distance transmission from a remote location.

**FEATURES**

- Transmits DisplayPort, HDMI, or VGA video, audio, bidirectional RS-232 and IR, along with Ethernet up to 330 feet (100 meters) over a shielded CATx cable
- Supports computer and video resolutions up to 4K
- HDMI output enables local display of the selected input
- HDCP 2.2 compliant
- One DisplayPort, one HDMI, and one VGA input
- Auto-switching between inputs
- Bidirectional RS-232 and IR insertion for AV device control
- **NEW** 26W remote power capability
- Supported HDMI specification features include data rates up to 10.2 Gbps, Deep Color up to 12-bit, 3D, and HD lossless audio formats
- Comprehensive EDID management
- EDID Minder® automatically manages EDID communication between connected devices
- Key Minder® continuously verifies HDCP compliance for quick, reliable switching
- Ethernet extension
- Selectable analog stereo audio input embedding
- RS-232 control
- Compatible with all XTP products



**XTP**  
SYSTEMS

**4K UHD**

**NOW SHIPPING**

Model	Version Description	Part Number
XTP T USW 103 4K	DP, HDMI, VGA Switcher - 26W Remote Power Capable ...	60-1717-12

For updated product availability, go to [www.extron.com](http://www.extron.com)

**Europe**  
+31.33.453.4040 / +800.3987.6673  
+31.33.453.4050 FAX

**Middle East**  
+971.4.299.1800  
+971.4.299.1880 FAX

**Asia**  
+65.6383.4400 / +800.7339.8766  
+65.6383.4664 FAX

**China**  
+86.21.3760.1568 / +4000.398766  
+86.21.3760.1566 FAX

**Japan**  
+81.3.3511.7655  
+81.3.3511.7656 FAX

**Extron**

DTP SYSTEMS

DTP R DP 4K  
DTP Receivers for DisplayPort

The Extron DTP R DP 4K 230 and DTP R DP 4K 330 are receivers that work with Extron DTP®-enabled products to send DisplayPort, audio, and bidirectional RS-232 and IR signals over a shielded CATx cable. The DTP R DP 4K 230 extends signals up to 230 feet (70 meters), while the DTP R DP 4K 330 extends signals up to 330 feet (100 meters). They provide an effective means of incorporating higher resolution DisplayPort signals with embedded audio into DTP Systems. The receivers accept analog stereo audio signals from a DTP-enabled product over the same shielded twisted pair cable. They support video resolutions up to 4K, including 2560x1600. Both DTP R DP 4K models feature a compact enclosure size and remote power capability.

- FEATURES**
- Receives DisplayPort plus control and analog audio over a shielded CATx cable:  
Up to 230 feet (70 meters) - DTP R DP 4K 230  
Up to 330 feet (100 meters) - DTP R DP 4K 330
  - Supports computer and video resolutions up to 4K
  - Supports DisplayPort SST - Single Stream Transport data rates up to 10.8 Gbps
  - Remote power capability
  - **NEW** EDID Minder® automatically manages EDID communication between connected devices
  - **NEW** Comprehensive EDID management
  - Accepts additional analog stereo audio signals
  - Bidirectional RS-232 and IR pass-through for AV device control

Model	Version Description	Part Number
DTP R DP 4K 230	DisplayPort Rx w/EDID Minder - 230 feet (70 m).....	60-1076-23
DTP R DP 4K 330	DisplayPort Rx w/EDID Minder - 330 feet (100 m).....	60-1076-63



DTP R DP 4K 230



DTP R DP 4K 330

**DTP**  
SYSTEMS

**4K UHD**

**EDID**  
**MINDER**

**NOW SHIPPING**

DTP2 T 211  
4K/60 HDMI DTP2 Transmitter with Audio Embedding

The Extron DTP2 T 211 is a long distance, digital twisted pair transmitter for sending HDMI, audio, and bidirectional RS-232 and IR signals up to 330 feet (100 meters) over a shielded CATx cable to Extron DTP®-enabled products. It supports video signals at resolutions up to 4K/60 at 4:4:4 chroma sampling, and complies with HDCP 2.2. Analog stereo audio signals can be embedded onto the digital video output signal. The compact enclosure size and remote power capability make the DTP2 T 211 ideal for discreet placement in lecterns, beneath tables, or wherever needed to meet application requirements.

- FEATURES**
- Transmits HDMI plus control and analog audio up to 330 feet (100 meters) over a shielded CATx cable
  - Supports computer and video resolutions up to 4K/60 @ 4:4:4
  - Analog stereo audio embedding
  - Supported HDMI 2.0b specification features include data rates up to 18 Gbps, HDR, Deep Color up to 12-bit, 3D, HD lossless audio formats, and CEC pass-through
  - Support for HDR – High Dynamic Range video
  - HDCP 2.2 compliant
  - Remote power capability
  - Accepts additional analog stereo audio signals
  - Bidirectional RS-232 and IR pass-through for AV device control
  - Compatible with all DTP receivers and DTP-enabled products

Model	Version Description	Part Number
DTP2 T 211	HDMI 4K/60 Tx - 330 feet (100 m) .....	60-1631-52



**DTP**  
SYSTEMS

**18 Gbps**  
**4K/60 4:4:4**

## DTP SYSTEMS

### DTP2 R 211

#### 4K/60 HDMI DTP2 Receiver with Audio De-Embedding

The Extron DTP2 R 211 is a long distance, digital twisted pair receiver that works with Extron DTP®-enabled products to send HDMI, audio, as well as bidirectional RS-232 and IR signals up to 330 feet (100 meters) over a shielded CATx cable. It supports video signals at resolutions up to 4K/60 at 4:4:4 chroma sampling, and complies with HDCP 2.2. In addition, this DTP2 receiver features a stereo output that is selectable between de-embedded or pass-through analog audio. The compact enclosure size and remote power capability make the DTP2 R 211 ideal for discreet placement behind displays, in equipment racks, or wherever needed to meet application requirements.

#### FEATURES

- Receives HDMI plus control and analog audio up to 330 feet (100 meters) over a shielded CATx cable
- Supports computer and video resolutions up to 4K/60 @ 4:4:4
- Stereo audio de-embedding
- Supported HDMI 2.0b specification features include data rates up to 18 Gbps, HDR, Deep Color up to 12-bit, 3D, HD lossless audio formats, and CEC pass-through
- Support for HDR – High Dynamic Range video
- HDCP 2.2 compliant
- Remote power capability
- Bidirectional RS-232 and IR pass-through for AV device control
- Compatible with all DTP transmitters and DTP-enabled products



**DTP**  
SYSTEMS

**18 Gbps**  
4K/60 4:4:4

Model	Version Description	Part Number
DTP2 R 211	HDMI 4K/60 Rx - 330 feet (100 m) .....	60-1631-53

### DTP2 T 212

#### Two Input 4K/60 HDMI Switcher with Integrated DTP2 Transmitter and HDMI Output

The Extron DTP2 T 212 is a two-input transmitter for sending HDMI, audio, and control up to 330 feet (100 meters) over a shielded CATx cable to an Extron DTP®-enabled product. It provides two HDMI inputs, one DTP2 output, and one HDMI output. It supports video resolutions up to 4K/60 at 4:4:4 chroma sampling, and complies with HDCP 2.2. Audio embedding and RS-232 remote control facilitate integration in professional environments. Integrator-friendly features include EDID Minder®, auto-switching between inputs, and bidirectional RS-232 and IR pass-through for remote AV device control. The low-profile enclosure enables discreet placement in lecterns, beneath tables, or wherever needed to meet application requirements.

#### FEATURES

- Transmits HDMI plus control and analog audio up to 330 feet (100 meters) over a shielded CATx cable
- DTP2 and HDMI outputs
- Supports computer and video resolutions up to 4K/60 @ 4:4:4
- Auto-switching between inputs
- Analog stereo audio embedding
- Supported HDMI 2.0b specification features include data rates up to 18 Gbps, HDR, Deep Color up to 12-bit, 3D, and HD lossless audio formats
- Support for HDR – High Dynamic Range video
- HDCP 2.2 compliant
- Remote power capability
- DTP2 output is compatible with HDBaseT-enabled devices
- Accepts additional analog stereo audio signals
- Bidirectional RS-232 and IR pass-through for AV device control
- Compatible with all DTP receivers and DTP-enabled products



**DTP**  
SYSTEMS

**18 Gbps**  
4K/60 4:4:4

Model	Version Description	Part Number
DTP2 T 212	Two Input 4K/60 HDMI Switcher - 330 feet (100 m) .....	60-1587-52

For updated product availability, go to [www.extron.com](http://www.extron.com)

Europe  
+31.33.453.4040 / +800.3987.6673  
+31.33.453.4050 FAX

Middle East  
+971.4.299.1800  
+971.4.299.1880 FAX

Asia  
+65.6383.4400 / +800.7339.8766  
+65.6383.4664 FAX

China  
+86.21.3760.1568 / +4000.398766  
+86.21.3760.1566 FAX

Japan  
+81.3.3511.7655  
+81.3.3511.7656 FAX

**Extron**

DTP SYSTEMS

DTP2 R 212  
4K/60 HDMI DTP2 Receiver and Switcher with Audio De-Embedding

The Extron DTP2 R 212 and DTP2 R 212 SA are digital twisted pair receivers that work with Extron DTP®-enabled products to send HDMI, audio, as well as bidirectional control signals up to 330 feet (100 meters) over a shielded CATx cable. Both models include one DTP2 input, one HDMI input for a local video source, and one HDMI output. These receivers support video resolutions up to 4K/60 at 4:4:4 chroma sampling, and comply with HDCP 2.2. Audio de-embedding and Ethernet remote control facilitate integration in professional environments. Integrator-friendly features include EDID Minder®, auto-switching between inputs, and bidirectional RS-232 and IR pass-through for remote AV device control. The DTP2 R 212 SA model also features a built-in Class D stereo amplifier, delivering 15 watts per channel.

- FEATURES**
- Receives HDMI plus control and analog audio up to 330 feet (100 meters) over a shielded CATx cable
  - HDMI input is ideal for connecting to a local source, such as a laptop or ShareLink wireless collaboration gateway
  - Supports computer and video resolutions up to 4K/60 @ 4:4:4
  - Auto-switching between inputs
  - Supported HDMI 2.0b specification features include data rates up to 18 Gbps, HDR, Deep Color up to 12-bit, 3D, HD lossless audio formats, and CEC
  - Support for HDR – High Dynamic Range video
  - HDCP 2.2 compliant



DTP2 R 212



DTP2 R 212 SA

**DTP**  
SYSTEMS

**18 Gbps**  
4K/60 4:4:4

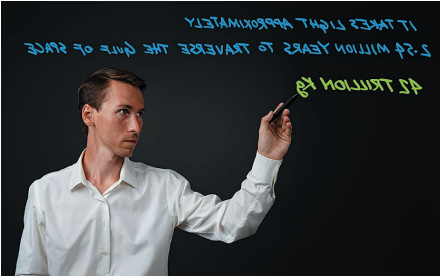
Model	Version Description	Part Number
DTP2 R 212	HDMI 4K/60 Rx Switcher - 330 feet (100 m) .....	60-1588-52
DTP2 R 212 SA	HDMI 4K/60 Rx Switcher w/ Amp - 330 feet (100 m) .....	60-1588-53

STREAMING AV

LinkLicense for SMP 300 Series  
Add Horizontal Video Mirroring Capabilities

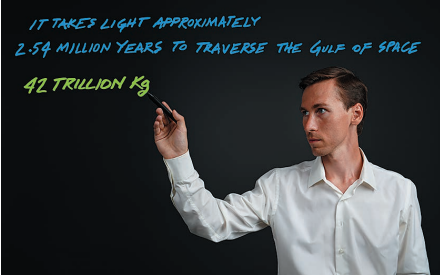
The Horizontal Video Mirroring Upgrade LinkLicense adds powerful features to SMP 300 Series Streaming Media Processors. The expanded functionality enhances and streamlines the recording of video and audio presentations. Horizontal Video Mirroring flips video horizontally to support lightboard or other applications that require reversal of the video image due to the presenter facing the camera while writing on a transparent surface. This eliminates time and resources spent manually flipping the video in post-production. Add an Extron Pro Series Control Processor and a TouchLink Pro Touchpanel for a user-friendly, integrated recording solution. A free system template for TouchLink Pro touchpanels provides easy access to SMP 300 recording functions, including Horizontal Video Mirroring.

- FEATURES**
- Adds Horizontal Video Mirroring capabilities to any SMP 300 Series processor
  - Save time and eliminate video editing in lightboard applications
  - Adjustable limit for minimum available recording time
  - Delay start of recording
  - Horizontal Video Mirroring web interface
  - Use with an Extron Pro Series control system for a full-featured recording solution



Recordings from lightboard applications will appear backwards as if seen in a mirror

Horizontal Mirroring



Horizontal Video Mirroring automatically flips the video to create legible recordings

Model	Version Description	Part Number
LinkLicense	SMP 300 Series Horizontal Video Mirroring Upgrade .....	79-2553-01



# Quantum Ultra

## More Flexibility for an Even More Powerful Platform



**VECTOR 4K**  
SCALING

**HYPERLANE**  
400 Gbps

**4K UHD**

**EVERLAST**  
POWER SUPPLIES

Quantum Ultra 610

**NEW** Quantum Ultra 305

Quantum Ultra is a modular 4K videowall processor with high-performance scaling and windowing technology which accommodates a wide range of applications. It features the Extron Vector™ 4K scaling engine and HyperLane® video bus capable of carrying a multitude of high-resolution sources for unmatched real-time performance. Custom output resolutions, portrait and landscape output support, output overlap, and mullion compensation provide compatibility with nearly any display technology. RS-232 and Ethernet interfaces provide direct connections for control systems. Quantum Ultra's configurability, features, and performance make it a future-ready solution for any videowall application.

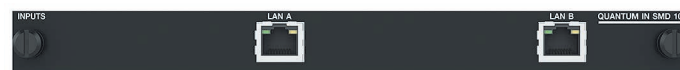
The Quantum Ultra videowall processor now offers even more configuration options with the addition of the new Quantum Ultra 305 Card Frame and Quantum IN SMD 100 Streaming Decoder Card, and an updated version of Videowall Configuration Software - VCS.

### New Features:

- Configurable RSS Source Type enables display of news, weather, or other dynamic content sourced from RSS text feeds
- Direct downloading of log files from the Quantum Ultra
- System overview report provides a complete summary of input, output, and hardware configurations, as well as saved presets for each canvas
- Power Save mode places the Quantum Ultra in a low power state and turns off input and output cards to conserve energy when not in use

### Quantum Ultra 305 Features:

- 3U, 5-slot card frame
- Future-ready 400 Gbps HyperLane dedicated video bus
- Single solid-state storage drive with write-protected operating system
- Internal Extron Everlast power supply
- RS-232 and Ethernet interfaces provide direct connections for SIS control
- Simultaneous management of multiple display resolutions and screen arrangements from a single processor



### Quantum IN SMD 100 Streaming Decoder Card

- Hardware decoding of H.264, MPEG-2, and MJPEG Streams
- Compliant with video section of ONVIF Profile S
- Decodes four 1080p/60 video streams or up to 16 standard definition video streams
- Supports a wide range of streaming transport protocols
- Two independently-configurable network connections

To learn more, visit [extron.com/Quantum](http://extron.com/Quantum)

Model	Version Description	Part Number
Quantum Ultra 305	3U, 5-slot Frame .....	Call
Quantum IN SMD 100	Streaming Decoder Card .....	Call

For updated product availability, go to [www.extron.com](http://www.extron.com)

**Europe**  
+31.33.453.4040 / +800.3987.6673  
+31.33.453.4050 FAX

**Middle East**  
+971.4.299.1800  
+971.4.299.1880 FAX

**Asia**  
+65.6383.4400 / +800.7339.8766  
+65.6383.4664 FAX

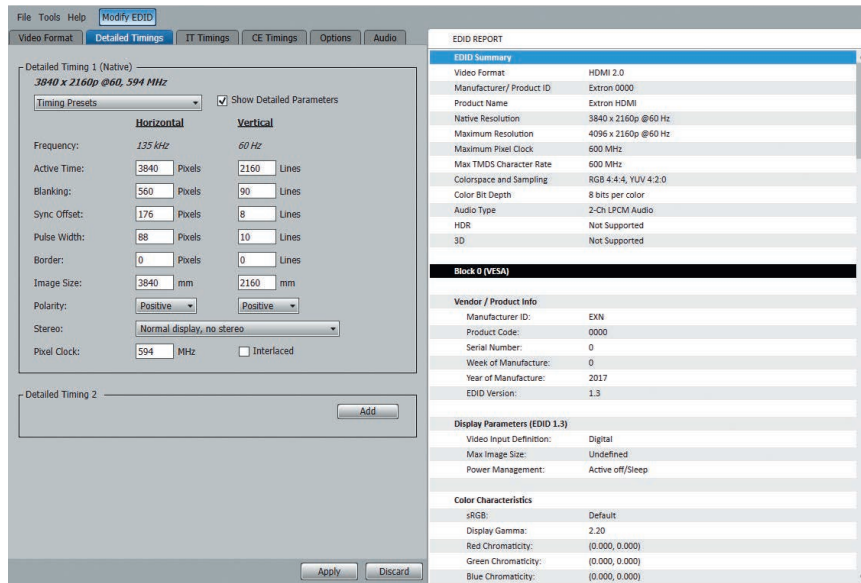
**China**  
+86.21.3760.1568 / +4000.398766  
+86.21.3760.1566 FAX

**Japan**  
+81.3.3511.7655  
+81.3.3511.7656 FAX

**Extron**

# EDID Manager 2.0

## The Industry's Best EDID Management Software



### EDID Manager 2.0

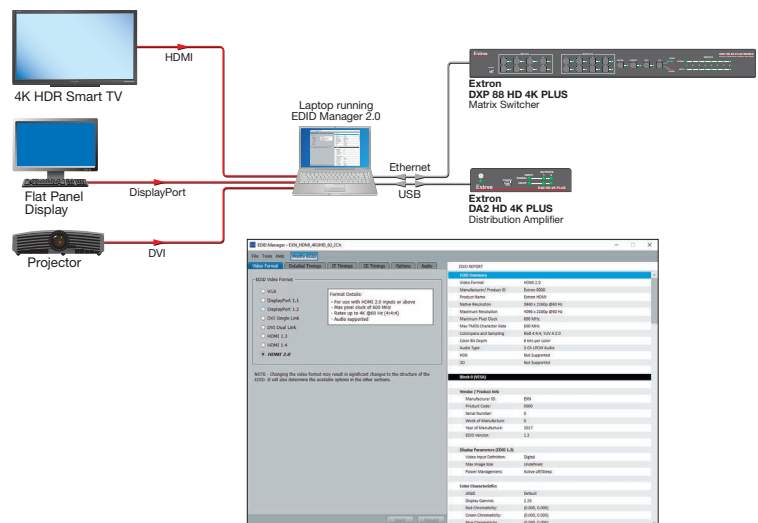
#### EDID Management Software

Extron EDID Manager® 2.0 is a Windows based software utility that enables users the ability to manage display device capabilities such as supported video rates, color space, chroma sampling, color bit depth, audio capabilities, and overall video format – all from a single convenient software application. The software allows you to open, view, modify, and convert EDID display formats as well as generate PDF status reports, providing critical information about the display device. It can connect and transfer EDID directly to select Extron products, simplifying project start-up and commissioning.

An Extron factory default EDID library is included as a starting template from which users can begin creating custom EDID configurations. User-modified EDID configurations can be accessed from other Extron Software such as PCS and XTP Configurator to connect and transfer custom EDID configuration to Extron products.

#### FEATURES

- Free EDID management Windows software utility
- Troubleshooting aid for addressing EDID compatibility issues
- Easy to use with no prior EDID experience necessary
- Supports HDMI 2.0, DisplayPort 1.2, DVI Single & Dual link and VGA
- Open and view EDID files – EDID Report displays a summary of basic EDID parameters for quick and easy interpretation and includes detailed analysis of the entire EDID file.
- Edit EDID files – Enables customization of AV parameters, such as timing, audio channels, bit depth, etc. for smoother system setup and operation.
- Convert EDID video format – Easily correct incompatibilities between display EDID and product capabilities within a system.
- Modify EDID and view EDID Report updates in a convenient, single page layout
- Supports Extron EDID Library for use with PCS, VCS, and XTP Configuration Software – The Extron EDID library may be accessed to open and save modified EDID files for availability within the EDID Minder tab of popular product configuration software tools. In addition, the included Extron factory EDID can be used as templates for custom EDID.
- Direct EDID Transfer to select Extron products
- Save EDID Report in PDF format – Provides AV system designers and technicians with convenient documentation for system troubleshooting and archival purposes.
- Enable Extron scaling products to output custom video resolutions based on user-generated EDID



## MATRIX SWITCHERS

### FPC 6000

#### Front Panel Controller for FOX Matrix 320x and FOX Matrix 14400

The FPC 6000 Front Panel Controller is designed for use with larger Extron matrix switchers, including the Extron FOX® Matrix 320x and FOX Matrix 14400. The FPC 6000 also supports Extron Matrix 1K large-scale matrix switchers up to 1000x1000. It incorporates an intuitive, 15" touchscreen control interface with simple, straightforward menus that allow any user, regardless of their technical proficiency, to control, monitor, access, and manage set-up, switching, monitoring and diagnostic functions via a local area network. One or more controllers can be connected to the network for control of the switcher from multiple sites. The FPC 6000 is housed within a 7U high, rack-mountable panel that can be installed in an equipment rack or control console.

#### FEATURES

- Designed for use with the Extron FOX Matrix 320x and FOX Matrix 14400
- Intuitive, menu-driven 15" color touchscreen control interface
- Provides remote monitoring, access, and management of all set-up and control functions
- Ethernet capabilities for matrix control from one or more locations over a local area network
- Multiple matrix control
- Global presets
- Rooming
- Includes PI 140 Power Injector



**NOW SHIPPING**

Model	Version Description	Part Number
FPC 6000	15" Touchscreen, Rack Mount, 7U.....	60-1706-01

## DISTRIBUTION AMPLIFIERS

### DA4 12G HD-SDI

#### Four Output 12G-SDI Distribution Amplifier

The DA4 12G HD-SDI is a compact four-output distribution amplifier for multi-rate SDI digital video signals. It supports all common serial digital video data rates up to 11.88 Gbps, while passing HDR, up to 16 channels of embedded audio, and other ancillary data allowed by the SMPTE and ITU standards. Automatic input cable equalization adds up to 984 feet (300 m) for SDI, 787 feet (240 m) for HD-SDI, 590 feet (180 m) for 3G-SDI, 295 feet (90 m) for 6G-SDI, and 230 feet (70 m) for 12G-SDI digital video, when using RG6 cable. The DA4 12G HD-SDI is housed in a quarter rack width, metal enclosure, providing integration-friendly mounting options into both new and existing AV systems.

#### FEATURES

- Automatically adapts to SMPTE and ITU digital video standards for SDI signals up to a 12G-SDI data rate
- Supports data rates from 270 Mbps to 11.88 Gbps
- Support for HDR – High Dynamic Range video
- Automatic input equalization
- Automatic output reclocking
- Passes HDR, up to 16 channels of embedded audio, and other ancillary data, including closed caption and time code
- Input rate LEDs



**4K UHD**

**NOW SHIPPING**

Model	Version Description	Part Number
DA4 12G HD-SDI	Four Output 12G-SDI Distribution Amplifier .....	60-1674-01

For updated product availability, go to [www.extron.com](http://www.extron.com)

SPECIALIZED PRODUCTS

PS 1220  
12V Multi-port Power Supply

The Extron PS 1220 is a 12-Volt, 2A energy-efficient power supply. It meets the Level VI standard for energy efficiency, conserving energy and reducing operational costs. The PS 1220 snaps into the included ZipClip™ 100 mounting bracket for secure mounting to rack rails, tables, or lecterns. The power supply is eighth-rack width, 1U high and features threaded inserts to mount the power supply directly on Extron rack shelves. The PS 1220 includes a 6-foot attached DC cable.

- FEATURES**
- Energy-efficient, Level VI-rated power supply for low power consumption and reduced operating costs
  - 2-pole, 3.5 mm captive screw power connector
  - Includes an attached six-foot DC cable
  - Rack mountable eighth rack width enclosure
  - Mounts securely on a variety of surfaces, including rack rails, tables, lecterns, projector poles, and table legs
  - Front panel power indicator provides a clear visual that the power supply is active
  - Patented ZipClip™ 100 mounting bracket included



Model	Version Description	Part Number
PS 1220	12V, 2A, 1/8 Rack.....	70-1259-01

ARCHITECTURAL CONNECTIVITY

AC+USB 300 Series Power Modules  
AC+USB Power Modules for Cable Cubby Series/2 Enclosures

Extron AC+USB 300 Series Power Modules for Cable Cubby Series/2, EBP 1200C, and TLP Pro 725C enclosures are available with up to two unswitched discrete US AC power outlets plus USB Type-C and USB Type-A power outlets. They provide up to 55 watts of USB power for charging mobile devices, such as laptops, smartphones and tablets. For convenient installation, AC+USB 311 US power modules feature an integrated Extron power supply. AC+USB 311 US power modules are UL/c-UL listed. Extron AC 100 Series Power Modules and AC+USB 200 Series Power Modules are also available for applications where USB Type-C power outlets are not needed.

- FEATURES**
- For use with Cable Cubby® Series/2, EBP 1200C, and TLP Pro 725C enclosures
  - Features USB Type-C and USB Type-A power outlets, as well as AC outlets
  - AC+USB 311 US provides a total of up to 55 watts of USB power
  - UL-listed US standard model features an attached 9.5' (2.90 m) AC power cord; part # 60-1782-01
  - UL-listed US conduit model features an attached 6' (1.83 m) length of 3/8" flexible conduit with a 6" (15.24 cm) pigtail of three-wire cable; part # 60-1782-20



NOW SHIPPING

Model	Version Description	Part Number
AC+USB 311 US, Cord	US (2) AC, (1) USBC, & (1) USBA Outlets.....	60-1782-01
AC+USB 311 US, Conduit	US (2) AC, (1) USBC, & (1) USBA Outlets, Conduit .....	60-1782-20

## ARCHITECTURAL CONNECTIVITY

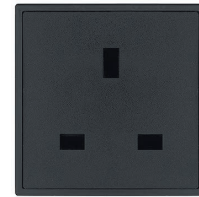
### Flex55 AC 101 SW and Flex55 AC 101 UK

#### Swiss and UK Power Connectivity for Extron's Elegant Flex55 Mounting Solution

The Flex55 AC 101 SW and Flex55 AC 101 UK are power modules for Flex55 mounting solutions designed for use in Switzerland and the UK. They feature one unswitched AC power outlet for charging mobile devices such as smartphones, tablets, and laptops. The Flex55 AC 101 SW and Flex55 AC 101 UK modules come equipped with an attached 28 cm IEC pigtail. These power modules are CE compliant. The Flex55 AC 101 SW and Flex55 AC 101 UK are available in a black finish.

#### FEATURES

- Designed for use with Extron's elegant Flex55 frames and enclosures
- AC power modules offer one unswitched AC power outlet per module
- AC power modules include an attached 11" (0.28 m) IEC pigtail
- All Flex55 100 Series power modules are CE compliant when installed



Flex55 AC 101 UK



Flex55 AC 101 SW

**NOW SHIPPING**

Model	Version Description	Part Number
Flex55 AC 101 UK	One UK Outlet, Black .....	60-1692-32
Flex55 AC 101 SW	One Switzerland Outlet, Black .....	60-1692-42

### Retractor Series/2 for USB and Mini DisplayPort

#### Cable Retraction System with Speed Control

Retractor Series/2 are variable-speed cable retraction and management systems for AVEdge 100, EBP 1200C, TLP Pro 725C, and Cable Cubby enclosures, as well as the TMK 120 R Table Mount Kit. Retractor Series/2 cables extend up to three feet (90 cm), and Retractor Series/2 XL models support cable extension up to five feet (152 cm).

#### USB-C to HDMI

For USB-C sources that support DisplayPort Alt Mode, the USB-C to HDMI retractor module provides connection to HDMI displays and peripheral devices. It supports video resolutions up to 4K/30.

#### Mini DisplayPort to HDMI

The Mini DisplayPort to HDMI retractor module converts DisplayPort signals to HDMI. It supports video resolutions up to 4K/30.

#### USB 3.0

Transfers data between USB devices at rates up to 5 Gbps.

#### USB-C Power

Delivers up to 60 watts of power to the attached device.

#### FEATURES

- **NEW** Retractor USB 3.0 features a USB Type-A Male to USB Type-B Male cable with data transfer rates up to 5 Gbps
- **NEW** Retractor Mini DisplayPort to HDMI 4K supports video resolutions up to 4K/30
- **NEW** Retractor USB-C Power provides up to 60 watts of power
- **NEW** Retractor USB-C to HDMI 4K supports video resolutions up to 4K/30
- Retractor Series/2 cables support cable extension up to three feet (90 cm)
- Patented, precise variable-speed cable retraction control provides more than 50 steps of adjustment between 1.5 and 4.0 seconds
- Engineered for long life and reliability, and tested to exceed 7,500 cable extension and retraction cycles



Retractor Series/2 USB-C Power



Retractor Series/2 XL Mini DisplayPort-HDMI 4K

**NOW SHIPPING**

Model	Version Description	Part Number
Retractor Series/2 USB 3.0	USB 3.0 Type-A to USB Type-B; 3 feet (90 cm) ...	70-1065-06
Retractor Series/2 Mini DisplayPort-HDMI	4K Mini DisplayPort to HDMI; 3 feet (90 cm) .....	70-1065-44
Retractor Series/2 USB-C Power	USB-C Power; 3 feet (90 cm) .....	70-1065-50
Retractor Series/2 USB-C - HDMI	4K USB-C to HDMI; 3 feet (90 cm) .....	70-1065-51
Retractor Series/2 XL Mini DisplayPort-HDMI	4K Mini DisplayPort to HDMI; 5 feet (152 cm) ....	70-1066-44
Retractor Series/2 XL USB-C Power	USB-C Power; 5 feet (152 cm) .....	70-1066-50
Retractor Series/2 XL USB-C - HDMI	4K USB-C to HDMI; 5 feet (152 cm) .....	70-1066-51

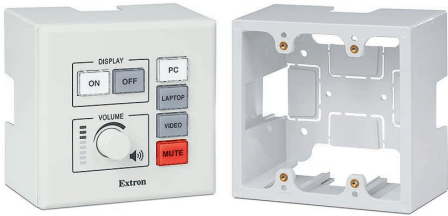
For updated product availability, go to [www.extron.com](http://www.extron.com)

MOUNTING HARDWARE

EWB 112  
External Wall Box for Extron US Two-Gang Wallplates

The Extron EWB 112 external wall box is an enclosure for US two-gang wallplates. The EWB 112 is designed with sufficient depth to house faceplate wiring and accepts cable runs from a surface-mounted raceway or rear wall space. It mounts two-gang wallplates such as the Extron MLC Plus 100 MediaLink® control panel onto a wall or other flat surface. The EWB 112 is available in a durable white finish.

- FEATURES**
- Designed to house faceplate wiring and take in cable runs from a surface-mounted raceway or rear wall space
  - EWB 112 includes four knockouts for external raceway channels
  - Available in a durable white finish



EWB 112 shown with MLC Plus 100 wallplate

NOW SHIPPING

Model	Version Description	Part Number
EWB 112	Two-gang; White .....	70-1252-23

EWB 211  
External Wall Box for Extron Flex55 and EU Products

The Extron EWB 211 External Wall Box is a mounting solution for Extron Flex55 and EU modules. It has sufficient depth to house faceplate wiring and accepts cable runs from a surface-mounted raceway or rear wall space. Compatible with the Flex55 101 one-gang mounting kit, the EWB 211 features two knockouts for external raceway cable channels and is available in a one-gang size with a durable white finish.

- FEATURES**
- Compatible with Extron Flex55 and EU modules when using the Flex55 101 Mounting Kit
  - Designed to house faceplate wiring and take in cable runs from a surface-mounted raceway or rear wall space
  - Includes two knockouts for external raceway channels
  - Available in a durable white finish



EWB 211 shown with EBP 108 EU eBUS Button Panel

NOW SHIPPING

Model	Version Description	Part Number
EWB 211	One-gang; White .....	70-1131-11

## CABLES & ADAPTERS

### HD Pro Plenum Series

#### HDMI Premium High Speed Optical Cables - Plenum

The Extron HD Pro Plenum Series are active, hybrid optical-copper cables for high-speed transmission of HDMI digital video and audio signals. These cables conform to Premium High Speed HDMI Cable performance standards and support data rates up to 18 Gbps, video resolutions up to 4K/60 @ 4:4:4, HDR, EDID, HDCP, and CEC. All HDMI audio formats are supported, including PCM 8-channel, Dolby Digital True HD, and DTS-HD Master Audio. Ultra-thin 0.16" (4 mm) diameter, narrow bend radius cable construction provides ease of installation in tight spaces, including plenum air spaces, without compromising performance. The active cables are unidirectional and draw ultra-low power from the connected HDMI source device. The HD Pro Plenum Series cables are available in lengths from 25 feet to 300 feet (7.6 meters to 91.4 meters).

#### FEATURES

- Conforms to Premium High Speed HDMI Cable performance standards
- Supports data rates up to 18 Gbps, video resolutions up to 4K/60 @ 4:4:4 and HDR
- PCM 8-channel, Dolby Digital True HD, DTS-HD Master Audio support
- Supports EDID, HDCP, and CEC
- 4K/60 verified
- Flexible, ultra-thin 0.16" (4 mm) diameter cable
- NEC CMP rated plenum cable
- Highly resistant to EMI/RFI interference
- Gold-plated contacts
- No external power is needed
- Color-coded ends
- Available in lengths from 25 feet to 300 feet (7.6 meters to 91.4 meters)



**18 Gbps**  
4K/60 4:4:4

**NOW SHIPPING**

Model	Version Description	Part Number
HD Pro P/25	25' (7.6 m) .....	26-726-25
HD Pro P/35	35' (10.6 m) .....	26-726-35
HD Pro P/50	50' (15.2 m) .....	26-726-50
HD Pro P/75	75' (22.8 m) .....	26-726-75
HD Pro P/100	100' (30.4 m) .....	26-726-100
HD Pro P/125	125' (38 m) .....	26-726-125
HD Pro P/150	150' (45.7 m) .....	26-726-150
HD Pro P/175	175' (53.2 m) .....	26-726-175
HD Pro P/200	200' (60.9 m) .....	26-726-200
HD Pro P/250	250' (76.2 m) .....	26-726-250
HD Pro P/300	300' (91.4 m) .....	26-726-300

### DPM-HDF 4K PLUS Series

#### DisplayPort Male to HDMI Female Active Adapters

The Extron DPM-HDF 4K PLUS Series are active DisplayPort to HDMI adapters for signals up to 4K/60 @ 4:4:4. Active circuitry converts DisplayPort packetized signals to TMDS for connection to HDMI devices. The adapters feature DisplayPort male and HDMI female connectors with gold-plated contacts and are powered by the connected DisplayPort source device. EDID, HDCP, and audio information are passed through between source and display. The DPM-HDF 4K PLUS Series are ideal for connecting DisplayPort-equipped sources to HDMI displays or other sink devices.

#### FEATURES

- Provides active conversion of DisplayPort signals to HDMI
- Supports resolutions up to 4K/60 @ 4:4:4 with data rates up to 18 Gbps
- Complies with VESA Interoperability Guidelines
- HDCP compliant
- Passes EDID information from HDMI display to the source
- Supports 8-channel LPCM and HBR audio
- The DPM-HDF/0.5 4K PLUS:
  - 6" (15 cm) adapter cable for ease of installation
- The DPM-HDF/6 4K PLUS:
  - Includes a male to male HDMI coupler and LockIt® HDMI cable lacing bracket



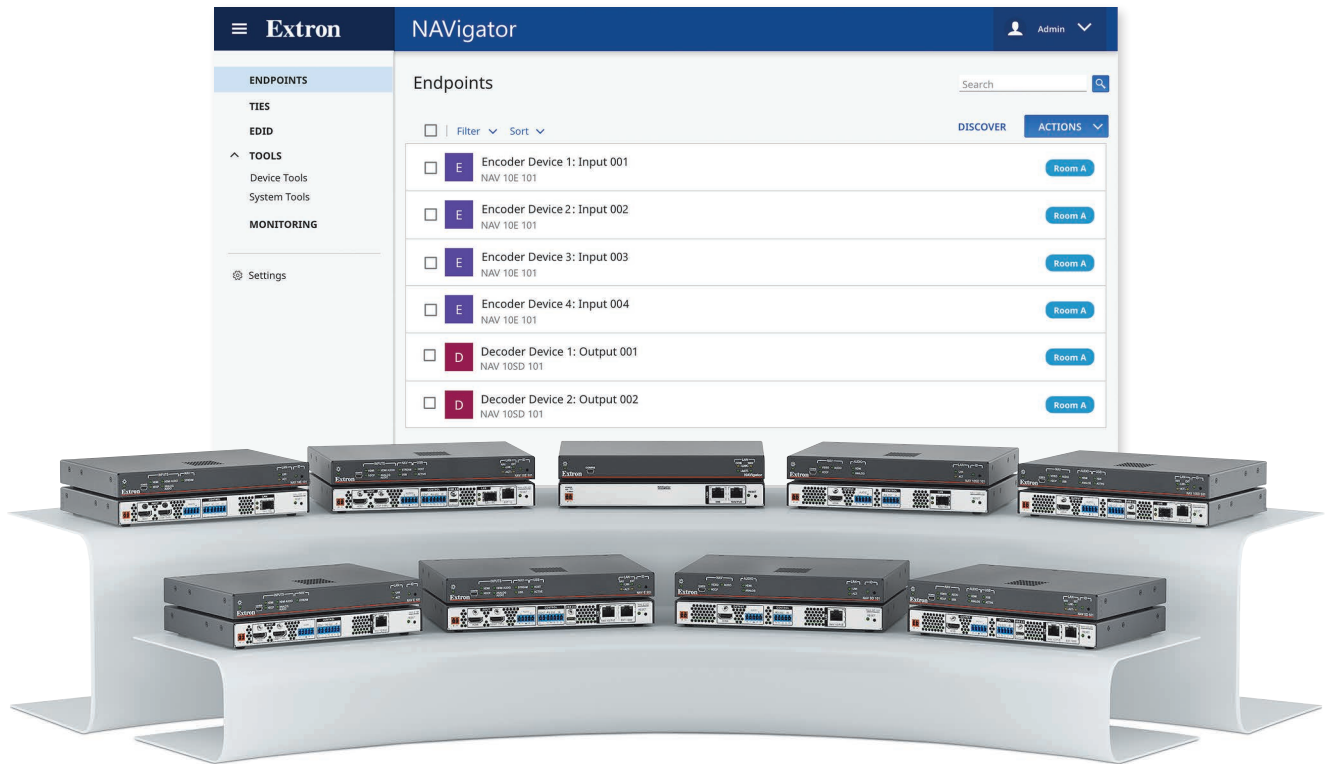
DPM-HDF/0.5 4K PLUS

**18 Gbps**  
4K/60 4:4:4

**NOW SHIPPING**

Model	Version Description	Part Number
DPM-HDF 4K PLUS	DisplayPort M-HDMI F Active Adapter .....	26-712-01
DPM-HDF/0.5 4K PLUS	DisplayPort M-HDMI F Active, 6" (15cm) .....	26-713-01
DPM-HDF/6 4K PLUS	DisplayPort M-HDMI F Active, 6' (1.8 m) .....	26-714-06

For updated product availability, go to [www.extron.com](http://www.extron.com)



# Network AV Specialist Certification

## Learn Best Practices for Networked AV System Design and Deployment

The Extron Network AV Specialist - NAVS certification program prepares individuals to successfully design, deploy, troubleshoot and commission networked AV systems using Extron NAV™ encoders, decoders, and software. Course participants will learn advanced techniques for streaming Pro AV over IP with an emphasis on low latency, bandwidth management, and signal quality. They will also learn to configure point-to-point and multipoint-to-multipoint networked AV systems and best practices for deploying Extron NAVigator, a hardware appliance for the secure management, configuration, and control of NAV Pro AV over IP systems. In addition, the Network AV Specialist program includes opportunities for hands-on experience with system design, configuration, validation, troubleshooting, and commissioning.

### With this certification, you will:

- Gain an understanding of Pro AV over IP
- Configure point-to-point and multipoint-to-multipoint networked AV systems
- Get hands-on experience with Extron NAV System encoders, decoders, and software
- Explore when and how to deploy Extron NAVigator Pro AV over IP System Manager
- Design simple to complex AV over IP real world systems
- Learn effective NAV system fault identification and troubleshooting techniques

[Learn More](#)

To find out more about Network AV Specialist Certification,  
contact your Extron S3 Customer Support Representative.



# Extron Courses and Videos - Anytime. Anywhere.

## Online Training That Fits Your Busy Life

The Extron online training portal has been re-engineered from the ground up. It's easier than ever to access the quality Extron training you expect, prerecorded and available online whenever and wherever you need it. Our new online training site lets you access courses and videos using any desktop, tablet, or mobile device. Two online courses are currently available, AV Principles and AV Associate, along with an ever-growing library of video resources covering a wide range of valuable content.

### Online Offerings

#### AV Principles – AVP Online Training

The Extron AV Principles online program provides a general understanding of AV technology, along with a greater awareness of Extron solutions and system applications. This series of no-cost online training sessions can be completed from home or work without extensive travel or disruption to your busy work schedule.

Topics include, but are not limited to:

- Audio
- Networking
- Signal Processing & Distribution
- Video
- Streaming Technology
- Fiber Optic Technology
- Control

Courses offer continuing education units for AVIXA and BICSI certifications

#### AV Associate – AVA Online Certification

Designed to give you an up-to-date and comprehensive understanding of audio, video, and control fundamentals along with a greater awareness of systems technologies and improved troubleshooting skills

- Industry recognized certification
- Principals of AV Technologies
  - Audio
  - Networking
  - Signal Processing & Distribution
  - Video
  - Streaming Technology
  - Fiber Optic Technology
  - Control
- Offers continuing education units for AVIXA and BICSI certifications

#### Video Resources

Extron Video Resources cover a wide range of topics, including brief product overviews, in-depth step-by-step tutorials to unedited demonstrations of how to setup a product straight from the box by an Application Engineer.

- Control System Software “How-To”
- AV Skills “How-To”
- Installation “How-To”
- Out of the Box Product Demonstration
- New Product Introductions

### Learn More

To find out more about Extron Online Training, contact your Extron S3 Customer Support Representative



# School of Emerging Technologies 4K

The Essential Course for AV Professionals  
Who Design and Integrate 4K Systems

The School of Emerging Technologies 4K provides in-depth instruction that allows system designers, resellers, consultants, and AV beginners to master 4K AV technologies within a short time span. The training concentrates on preparing AV infrastructure for current 4K needs and an 8K future. The instruction shows how to design digital 4K AV systems by teaching concepts and techniques for a range of technologies. The student-instructor ratio is kept low to ensure that each class member receives individual attention. The School of Emerging Technologies 4K provides instructor-led training and demonstration along with hands-on experiences in real-world scenarios to reinforce learning.

## Course Content

The School of Emerging Technologies 4K is a two-day course that consists of the following general categories:

- Master the methods for designing digital AV systems that incorporate 4K, deep color, HDR and other emerging technologies
- Understand the capabilities of signal processors and how they can be used to improve presentations
- Learn how fiber optic cables work, their performance characteristics, and when to use fiber optic cable
- Determine how to manage AV streaming latency, compression, and bandwidth for optimal results within a networked environment
- See how digital signal processing allows the operator to alter audio signals in terms of time, spectrum, or level
- Utilize Extron Pro Series control products, software, and technologies to configure user-friendly AV system control

[Learn More](#)

To find out more about the School of Emerging Technologies 4K training course,  
contact your Extron S3 Customer Support Representative.



## Extron Satisfaction Guarantee

As a leading manufacturer in the AV industry, we are committed to engineering and manufacturing our products to the highest standards of quality, performance, and value. From our advanced product design, manufacturing and quality control procedures to our friendly and knowledgeable support teams, our commitment to satisfy you is paramount. In every interaction with Extron, you can be confident you will receive our S3 commitment to Service, Support, and Solutions. For 36 years, our objective has been to ensure that every customer is completely satisfied with every purchase.

To underscore this commitment, we offer our Satisfaction Guarantee. This means we will work diligently to resolve any issue you have with your purchase until you are completely satisfied. Extron employees are prepared to do whatever it takes to make certain that the entire process of doing business with us is a positive and professionally rewarding experience for you.

I'm so confident in our ability to deliver on this pledge that I back it personally. If you are not satisfied with any part of your transaction with Extron, I want to know. Please contact me at [president@extron.com](mailto:president@extron.com). I will personally address any unresolved customer issue. We greatly appreciate your business. It is our intent to keep you as a customer for life.

A handwritten signature in dark ink, reading "Andrew C. Edwards".

Andrew C. Edwards  
President





---

#### WORLDWIDE SALES OFFICES

---

Anaheim • Raleigh • Silicon Valley • Dallas • New York • Washington, DC • Toronto • Mexico City • Paris • London • Frankfurt  
Madrid • Stockholm • Amersfoort • Moscow • Dubai • Johannesburg • Tel Aviv • Sydney • Melbourne  
Bangalore • Mumbai • New Delhi • Singapore • Seoul • Shanghai • Beijing • Hong Kong • Tokyo

[www.extron.com](http://www.extron.com)