

# National Incident Management System



## Homeland Security Presidential Directive – 5

*Directed the development of the National Incident Management System and the National Response Plan...*



## National Incident Management System

*...a consistent nationwide approach for federal, state, tribal, and local governments to work effectively and efficiently together to prepare for and respond to all hazards, including acts of terrorism.*



## National Response Plan

*... built on the template of the National Incident Management System. It provides the structure and mechanisms for coordinating federal support to state, local and tribal incident managers....*

*... for exercising direct federal authorities and responsibilities, and*

*Incidents of National Significance.*



## Components of the NRP



- Concept of Operations
- Coordinating Structures
- Roles & Responsibilities
- ESF Annexes
- Support Annexes
- Incident Annexes

## What is NIMS?

- A comprehensive, national approach to incident management
- Applicable at all jurisdictional levels and across disciplines

## Why Do We Need NIMS?

Lessons learned have shown the need for:

- A coordinated response.
- Standardization.
- Interoperability.

## NIMS Concepts and Principles

NIMS is:

- Flexible to enable all responding organizations to work together.
- Standardized to improve overall response and interoperability.

## Components of NIMS



- Command & Management
- Preparedness
- Resource Management
- Communications and Information Management
- Supporting Technologies
- Ongoing Management and Maintenance

## Components of NIMS

### Command and Management



- Incident Command System
- Multiagency Coordination System
- Public Information System

## Components of NIMS



### Preparedness

- Planning
- Training and Exercises
- Standards and Certification
- Mutual Aid
- Information and Publications

## Components of NIMS



### Resource Management

- Identify and type resources
- Certify and credential personnel
- Inventory, acquire, mobilize, track and recover

# National Incident Management System

## Components of NIMS ...



Communications and Information Management

Supporting Technologies

Ongoing NIMS Management

## The NIMS Integration Center



*...provides strategic direction for and oversight of NIMS, including implementation, maintenance and refinement over the long term.*

*...serves as Executive Agent for the National Response Plan.*

## NIMS Integration Center Initiatives

- NIMS National Standard Curriculum
- ICS Training Development Guidance
- NIMS Capability Assessment Support Tool
- Resource Management Initiative
- Credentialing
- NIMS ICS Courses
- IS-700 NIMS Introductory Training
- IS-800 NRP Introductory Training



## NIMS Integration Center Initiatives

- NIMS Compliance Guidance
- NIMS Tools and Templates
- NIMS Communications
  - NIMS *Alert*
  - NIMS Web Site: [www.fema.gov/nims](http://www.fema.gov/nims)
  - Ask the NIMS Center: [NIMS-Integration-Center@dhs.gov](mailto:NIMS-Integration-Center@dhs.gov)
  - Call the NIMS Center: [202-646-3852](tel:202-646-3852)
  - NIMS FAQs - **New**



## National Incident Management System



### FY 2005 Compliance Activities: States

- Incident Command System
- NIMS into Emergency Operations Plans
- NIMS into training, exercises
- Intrastate mutual aid agreements
- Technical assistance

*Letter from Secretary Ridge to Governors, Sept. 8, 2004*

## National Incident Management System



### FY 2005 Compliance Activities: State, Local, Tribal

- Complete EMI Course – NIMS Introduction
- Formally recognize NIMS
- Establish NIMS baseline
- Establish strategy for implementing NIMS
- Institutionalize use of ICS

*Letter from Secretary Ridge to Governors, Sept. 8, 2004*

## What Is Preparedness?

- Actions to establish and sustain prescribed levels of capability
- Ensures mission integration and interoperability

## Responsibilities of Preparedness Organizations

- Establishing/coordinating plans and protocols
- Integrating/coordinating activities
- Establishing guidelines and protocols to promote interoperability
- Adopting guidelines for resource management
- Establishing response priorities
- Establishing/maintaining multiagency coordination mechanisms

## Preparedness Planning

- Plans describe how resources will be used.
- Plans describe mechanisms for:
  - Setting priorities.
  - Integrating entities/functions.
  - Establishing relationships.
  - Ensuring that systems support all incident management activities.

## Types of Plans

- Emergency Operations Plans
- Procedures
- Preparedness Plans
- Corrective Action and Mitigation Plans
- Recovery Plans

## Training and Exercises

The NIMS Integration Center will:

- Facilitate development and dissemination of national standards, guidelines, and protocols.
- Facilitate use of modeling/simulation.
- Define general training requirements and approved courses.
- Review/approve discipline-specific training requirements.

## Personnel Qualifications and Certification

Development of standards, including:

- Training
- Experience
- Credentialing
- Currency requirements
- Physical and medical fitness

## Equipment Certifications

- Facilitate development of national equipment standards, guidelines, and protocols
- Review and approve equipment meeting national standards

## Mutual Aid and EMACs

Jurisdictions at all levels are encouraged to enter into agreements with:

- Other jurisdictions.
- Private-sector and NGOs.
- Private organizations.

## Publication Management

- The development of naming and numbering conventions
- Review and certification of publications
- Methods for publications control
- Identification of sources and suppliers for publications and related services
- Management of publication distribution

### Training Objectives:

To provide an overview of Basic ICS

- Principles
- Organization
- Terminology

## What is ICS?

ICS is a formal management system used to ensure command, control, and coordination of an emergency response.



## ICS Goal

Stabilize the emergency incident

Establish **one** person in charge with chain of command and support staff

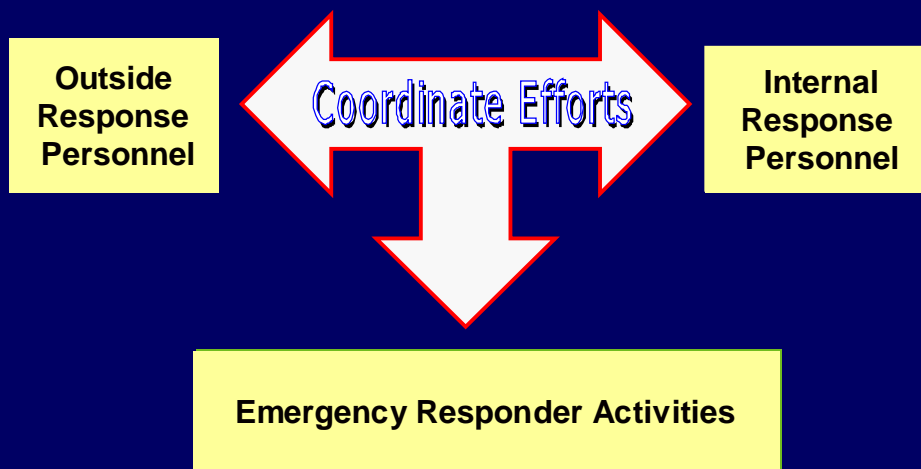


### Examples of incidents

- Wildfires
- Major Structure Fires
- Rescue Missions
- Transportation Accidents
- Major Storm Damage
- Public Health Emergencies

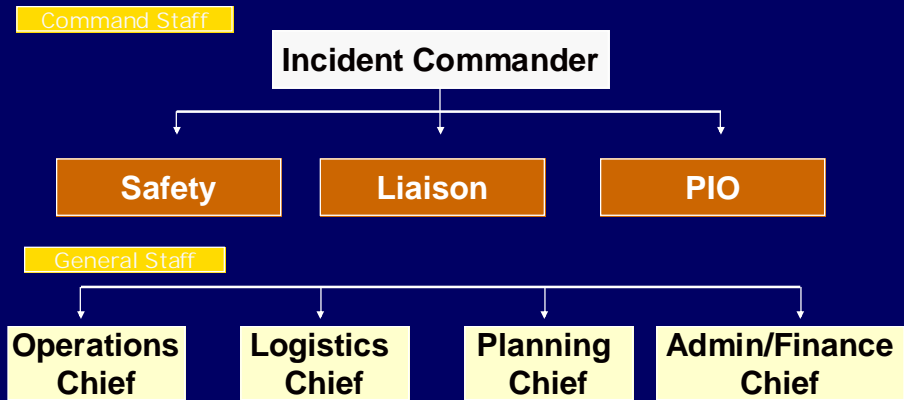


### How does it work?





## ICS Organization



## ICS Organization

### Incident Commander

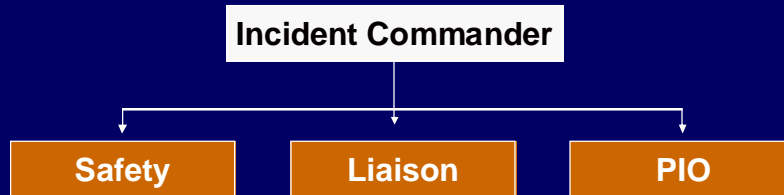


### Roles and Responsibilities

- Manages overall operation of emergency incident
- Analysis Magnitude of Situation (Sizing)
- Assigns staff responsibilities
- Implements the response plan
- Requests additional assets as needed

## ICS Organization

### Command Staff



## ICS Organization

### Command Staff Roles and Responsibilities

**Safety Officer** - Assures safety of responders and bystanders. Checks PPE.

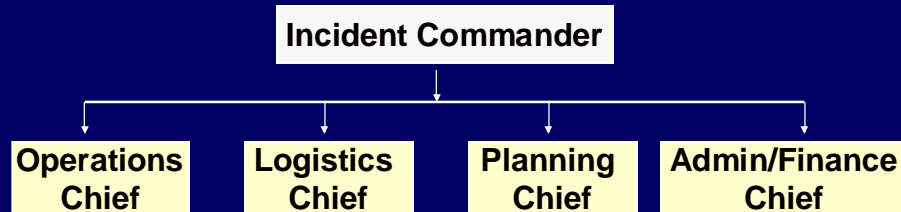
**LNO** - Coordinates with external response teams

**PIO** - Single point of contact for responding to media and the general public



## ICS Organization

### General Staff



ALPO OPAL FLOP

## ICS Organization

### General Staff Roles and Responsibilities

**Operations Chief** - Coordinates all "hands-on" activities. Manages hazardous exposures and evacuation requirements.

**Plans Chief** – Maintains the status of all human and equipment resources. Logs incident developments

**Logistics Chief** – Coordinates requirements for facilities, tools, equipment, and supplies, and the security perimeter.

**Admin/Finance Chief** - Captures, maintains, and records all incident costs.

## ICS Organization

### Other Commands and Considerations

- Area Command
- Unified Command
- Crisis Management
- Consequence Management
- The Florida Incident Field Operations Guide (FOG)

## ICS Organization

### Emergency Support Chain

Local – IC

County – County Emergency Management/EOC/ESF

RDSTF – Terror Events Only

State – SERT/SEOC/EFS

Federal – FEMA/EFS/other Feds

