

NU Simply Web

Laptops, iPads, Tablets and Home Computers

IT Helpline



**OPEN 24 HOURS,
365 DAYS A YEAR**

Tel: 0191 227 4242

Freephone: 0800 923 4242

Text: + 44 77 81 48 27 86

Email: it.helpline@northumbria.ac.uk

Search: northumbria.ac.uk/knowhow

Chat: northumbria.ac.uk/itchat



twitter @NorthumbriaIT



facebook.com/NorthumbriaIT

northumbria.ac.uk/it





Get connected to Free WiFi on campus and access Northumbria IT Facilities from potentially anywhere in the world



1. Set up WiFi

Simply Web for Mac

- Make sure that your WiFi connection is switched on
- Choose **NU Simply Web** from the list of WiFi networks available
- When prompted enter your Northumbria username and password
- At the Verify Certificate screen click

You can now open your web browser and access the internet in the usual way. Continue with Steps 2 & 3 further on in this booklet to access the Student Desktop using WiFi on campus or via your own Internet service from off campus or in halls of residence.

Simply Web for Windows

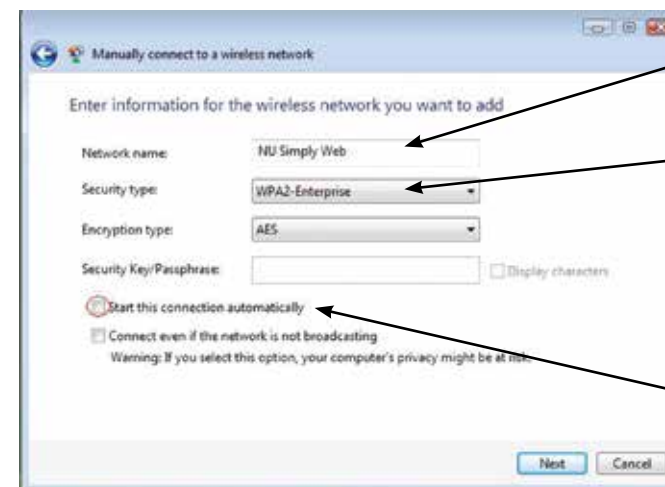
Windows 7

- Click **Start Button**
- Click **Control Panel**
- Click **Network and Sharing Center**
(if you can't see this click Network and Internet to proceed)

- Click **Set up a new connection or network**
- Select **Manually connect to a WiFi network** then click

Windows 8

- Click **Windows Button**
- Type **Control Panel** and select it
- Select **Network and Internet**



In Network Name type **NU Simply Web**
(this is case sensitive)

From the security drop down menu select **WPA2-Enterprise**. This will automatically fill in the encryption type as **AES**

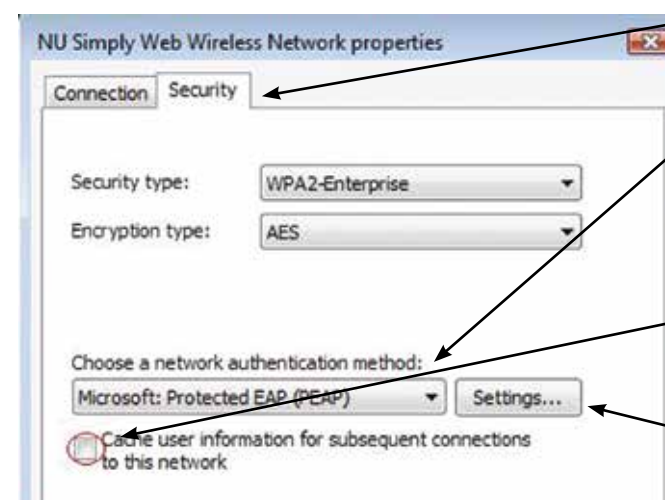
If your device does not support WPA2 your supplier may offer a free upgrade. Contact your supplier for instructions

UNTICK Start this connection automatically

Then click

- The message **Successfully added NU Simply Web** will be displayed.

- Select **Change connection settings**



Select the **Security** tab

Check that **Protected EAP(PEAP)** has been pre-selected as authentication method

If your device does not support Protected EAP (PEAP) contact your supplier

UNTICK

Remember my credentials for this connection each time I'm logged on (Win7 & Win8)

• Click **Settings**

● **Untick Validate Server Certificate**



● This may say
Verify the server's identity by validating the certificate

- Click **Configure**
- **Untick Automatically use my Windows logon name and password** and click **OK** in all dialog boxes for the settings to be accepted
- Close the **Successfully added NU Simply Web** box still open on your screen



- Click the links to download the Citrix Receiver and follow the on screen instructions to install
A full help guide is available on the downloads site if you need step by step help.
- Open Citrix Receiver and use the following settings:

Add Account work email or server address	Enter your Northumbria email address
Login with your Northumbria Username and Password Most devices (excluding Macs) require your username to be entered in the following format:	Mac Enter your Northumbria username, domain and password as shown

Domain\User:

Password:

Username	Username
Password
Domain	unn



You can now open a web browser and access the Internet in the usual way. Continue with Steps 2 & 3 to access the Student Desktop using WiFi on campus or via your own Internet service from off campus or in halls of residence.

2. Download the Citrix Receiver

The Citrix Receiver is a small piece of software which makes the connection to the Student Desktop and takes little time to install.

- If you are **on campus** connect to NU Simply Web
- If you are **off campus** or in halls of residence connect to the Internet in your usual way
- Go to the software downloads site at www.northumbria.ac.uk/downloads

3. Connect to Student Desktop

- Open Citrix Receiver
- Connect to Student Desktop



Access to Northumbria IT facilities including:

- Student Desktop or Staff Desktop
- Standard Applications (Word, Excel etc)
- Your files on the U Drive
- Northumbria Email
- Electronic Information Sources



+ Support

The IT Place

Get person to person help. Just bring your Smartphone or WiFi device along to The IT Place:

- **City Campus**
Library Basement
Opening times may vary during the term
Check website for details at northumbria.ac.uk/itplace
- **Coach Lane Campus**
Clinical Skills Centre
Every Thurs 10:00 – 1:00pm (term-time)

IT Chat

Chat to a Helpline advisor online at any time. Just click the icon on the Student Desktop

Or go to northumbria.ac.uk/itchat

IT Labs

There are free IT Helpline phones located in or near all IT Labs.

KnowHow

Search in KnowHow for everything you want to know about IT@Northumbria
northumbria.ac.uk/knowhow