



**FEMA Course IS-100b**

# **Introduction to the Incident Command System**

*for*

## **Search & Rescue Merit Badge**



**FEMA**

Visual 1.1  
Course Overview



# Search & Rescue Merit Badge

(requirement #5)

Complete the training for ICS-100, Introduction to Incident Command System. Print out the certificate of completion and show it to your counselor. Discuss with your counselor how the ICS compares with Scouting's patrol method.



## FEMA

Visual 1.2  
Course Overview



# This course has been modified...

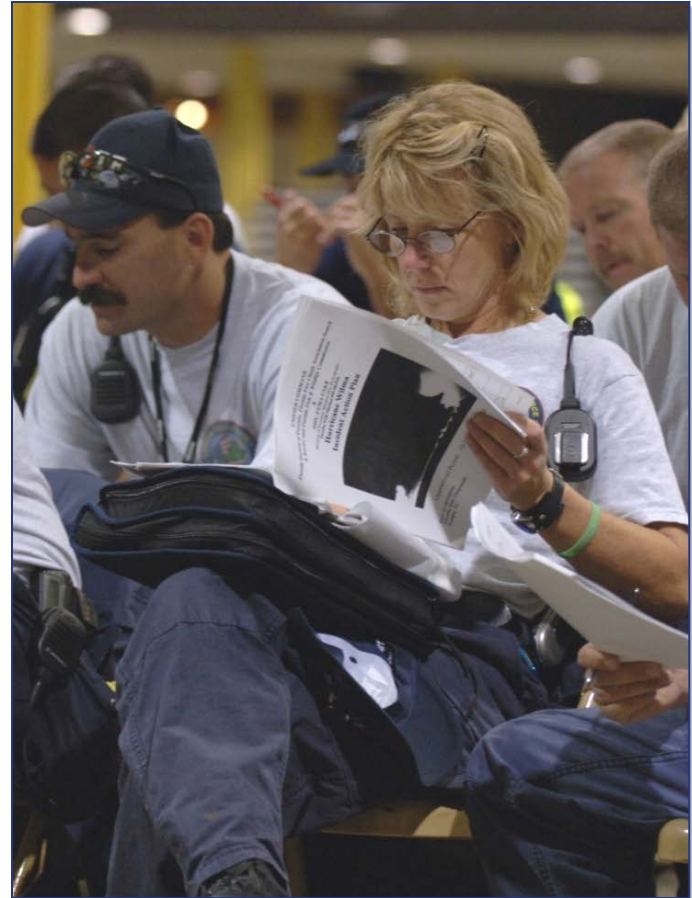
The original content of this FEMA-provided course has been modified to fit a Boy Scout Troop meeting schedule. Although many areas have been reduced, the key learning points remain in support of the on-line final exam for IS-100.b.



**FEMA**

Visual 1.3  
Course Overview

# Unit 1: Course Overview



**FEMA**

Visual 1.4  
Course Overview



# Course Goals



- **Demonstrate basic knowledge of the Incident Command System (ICS).**
- **Be prepared to coordinate with response partners from all levels of government and the private sector.**
- **Recognize how the ICS system relates to the Patrol Method**



**FEMA**

**Visual 1.5**  
**Course Overview**

# Overall Course Objectives



**After completion of this course, you should be familiar with ICS:**

- **Applications.**
- **Organizational principles and elements.**
- **Positions and responsibilities.**
- **Facilities and functions.**
- **Planning.**



**FEMA**

**Visual 1.6**  
**Course Overview**

# Participant Introductions



**Please provide your:**

- **Name**
- **Leadership position in the Troop**



**FEMA**

**Visual 1.7**  
**Course Overview**

# Participant Expectations



**What do you expect  
to gain from this  
course?**



**FEMA**

Visual 1.8  
Course Overview



# Instructor Expectations



- Pay attention.
- Cooperate.
- Be open minded to new ideas.
- Participate actively in all of the training activities and exercises.
- Use what you learn in the course to perform effectively within an ICS organization.
- Recognize how the patrol method relates to the ICS system



FEMA

# Course Structure



**Unit 1:  
Course  
Overview**

**Unit 2:  
ICS Overview**

**Unit 3:  
ICS Features &  
Principles**

**Unit 4:  
Incident Commander &  
Command Staff Functions**

**Unit 5:  
General Staff  
Functions**

**Unit 6:  
Unified Command**

**Unit 7:  
Course Summary –  
Putting It All Together**



**FEMA**

**Visual 1.10  
Course Overview**

# Course Logistics



- Course agenda
- Sign-in sheet
- Breaks
- In case of emergency:
  - First Aid kit?
  - Exit locations?
  - Phone?
  - Location of AED?
  - Who's in charge?



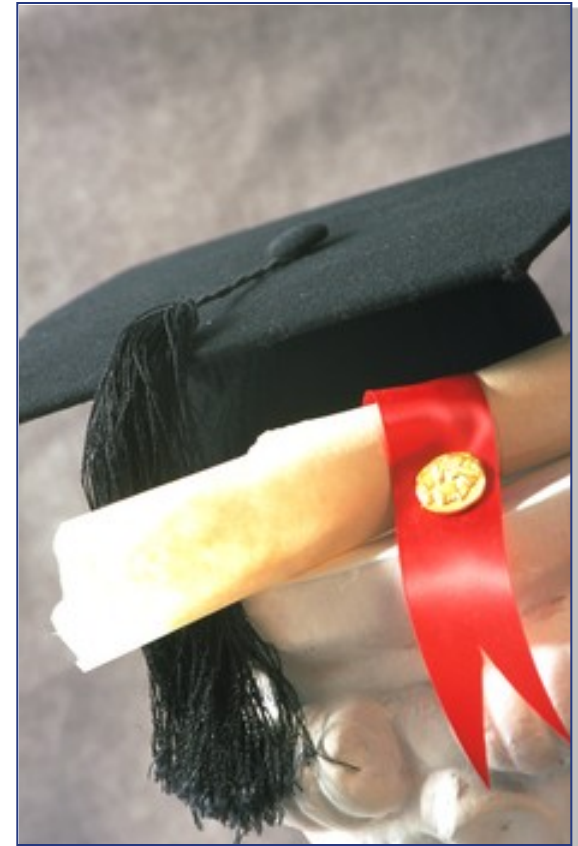
**FEMA**

Visual 1.11  
Course Overview

# Successful Course Completion



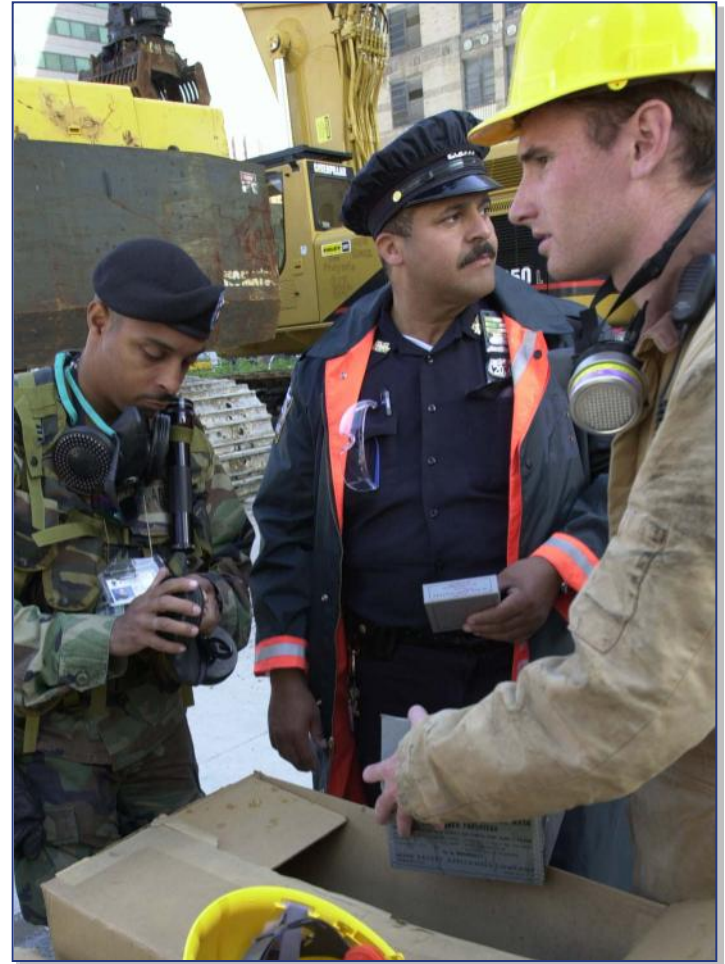
- Participate in unit activities/exercises.
- Achieve 75% or higher on the final exam.



**FEMA**

Visual 1.12  
Course Overview

## Unit 2: ICS Overview



**FEMA**

Visual 1.13  
Course Overview



# Unit Objectives



## Identify:

- Three purposes of ICS.
- Requirements to use ICS.

## Unit List

- ✓ Course Overview
- ICS Overview
  - ICS Features & Principles
  - Incident Commander & Command Staff Functions
  - General Staff Functions
  - Unified Command
  - Course Summary – Putting It All Together



**FEMA**

Visual 1.14  
Course Overview

# What Is ICS?



## ICS:

- **Is a standardized, on-scene, all-hazards incident management concept.**
- **Enables a coordinated response among various jurisdictions and agencies.**
- **Establishes common processes for planning and management of resources.**
- **Allows for integration within a common organizational structure.**



FEMA

# When Is ICS Used?



ICS can be used to manage:

- Natural hazards.
- Technological hazards.
- Human-caused hazards.
- Planned events.



**FEMA**

Visual 1.16  
Course Overview

# What Is an Incident?



An incident is . . .

. . . an occurrence  
or event, natural or  
human-caused, that  
**requires a response**  
to protect life or  
property.



FEMA

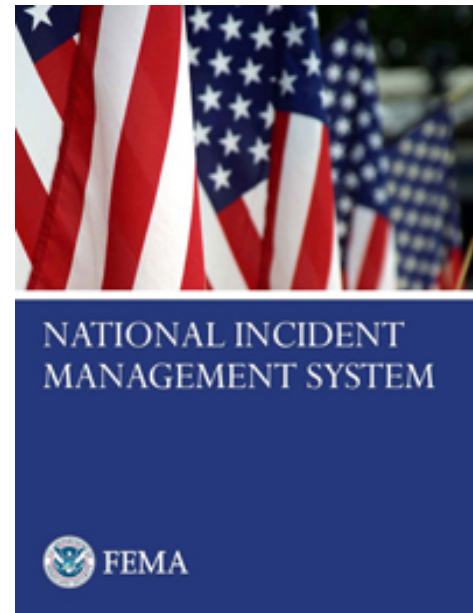
Visual 1.17  
Course Overview



# Why Use ICS?



**1. It Works!**



**2. Mandates**



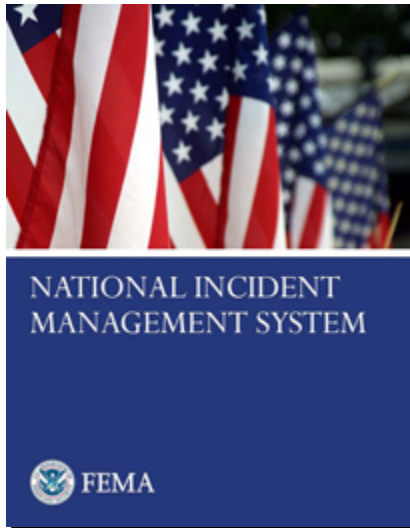
**FEMA**

**Visual 1.18**  
**Course Overview**



# National Incident Management System (NIMS)

---



**What ? . . .** NIMS provides a consistent nationwide template . . .

**Who? . . .** to enable Federal, State, tribal, and local governments, the private sector, and nongovernmental organizations to work together . . .

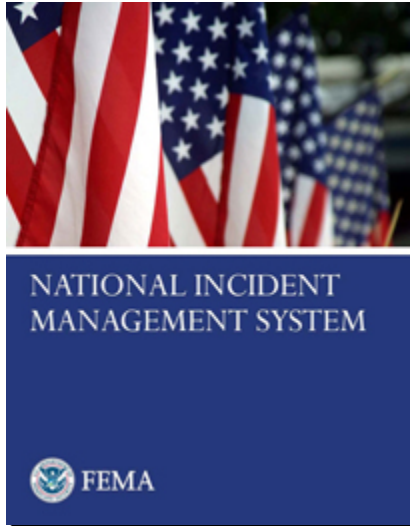
**How? . . .** to prepare for, prevent, respond to, recover from, and mitigate the effects of incidents regardless of cause, size, location, or complexity . . .

**Why? . . .** in order to reduce the loss of life and property, and harm to the environment.



**FEMA**

# NIMS Components & ICS



**Preparedness**

**Communications and  
Information Management**

**Resource Management**

**Command and Management**

**Ongoing Management and  
Maintenance**

**Incident  
Command  
System**

**Multiagency  
Coordination  
Systems**

**Public  
Information**

**Additional Information:** [www.fema.gov/emergency/nims](http://www.fema.gov/emergency/nims)



**FEMA**

**Visual 1.20  
Course Overview**

# Discussion Question



**What are common causes of incident response problems?**



**FEMA**

Visual 1.21  
Course Overview

# Lessons Learned



**Without ICS, incident responses typically:**

- **Lack accountability.**
- **Have poor communications.**
- **Use unsystematic planning processes.**
- **Are unable to efficiently integrate responders.**



**FEMA**

Visual 1.22  
Course Overview

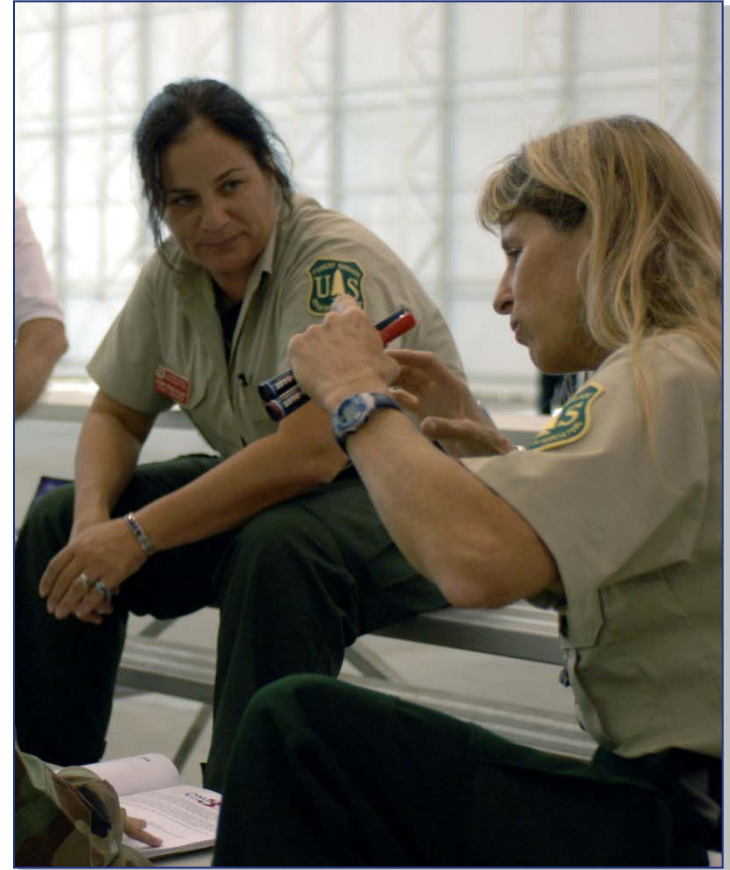


# ICS Benefits



**ICS helps to ensure:**

- **The safety of responders, workers, and others.**
- **The achievement of response objectives.**
- **The efficient use of resources.**



**FEMA**

**Visual 1.23**  
**Course Overview**



# Summary



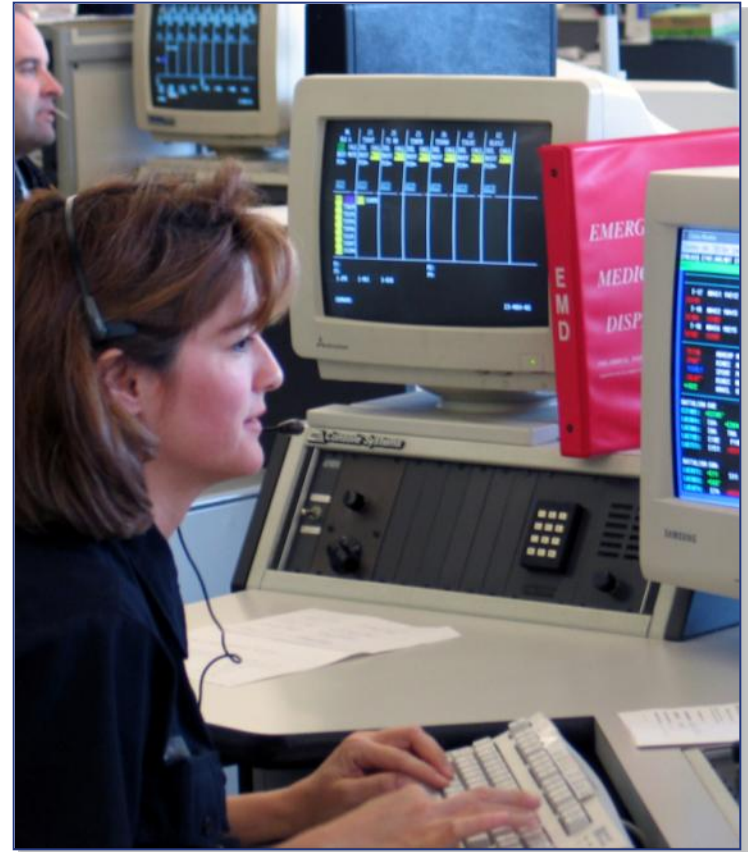
## ICS:

- **Is a standardized management tool for meeting the demands of small or large emergency and nonemergency situations.**
- **Represents best practices, and has become the standard for emergency management across the country.**
- **May be used for planned events, natural disasters, and acts of terrorism.**
- **Is a key feature of NIMS.**



FEMA

# Unit 3: ICS Features and Principles



**FEMA**

Visual 1.25  
Course Overview

# Unit Objectives



- Describe the basic features of ICS.
- Select the correct terminology for ICS facilities.
- Identify common tasks related to personal accountability.

## Unit List

- ✓ Course Overview
- ✓ ICS Overview
- ICS Features & Principles
  - Incident Commander & Command Staff Functions
  - General Staff Functions
  - Unified Command
  - Course Summary – Putting It All Together



**FEMA**

# ICS Features: Overview



- **Standardization**
  - Common terminology
- **Command**
  - Establishment and transfer of command
  - Chain of command and unity of command
- **Planning/Organizational Structure**
  - Management by objectives
  - Incident Action Plan (IAP)
  - Modular organization
  - Manageable span of control
- **Facilities and Resources**
  - Comprehensive resource management
  - Incident locations and facilities
- **Communications/Information Management**
  - Integrated communications
  - Information and intelligence management
- **Professionalism**
  - Accountability
  - Dispatch/Deployment



**FEMA**

# Common Terminology – No Codes!



Using **common terminology** helps define:

- Organizational functions.
- Incident facilities.
- Resource descriptions.
- Position titles.



**FEMA**

Visual 1.28  
Course Overview



# Discussion Question



**Why should you use  
plain English during  
an incident response?**



**FEMA**

Visual 1.29  
Course Overview

# Why Plain English?



**EMT = Emergency Medical Treatment**

**EMT = Emergency Medical Technician**

**EMT = Emergency Management Team**

**EMT = Eastern Mediterranean Time (GMT+0200)**

**EMT = Effective Methods Team**

**EMT = Effects Management Tool**

**EMT = El Monte, CA (airport code)**

**EMT = Electron Microscope Tomography**

**EMT = Email Money Transfer**



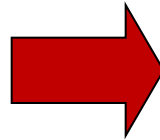
**FEMA**

# ICS Features: Overview



- **Standardization**

- Common terminology



## **Command**

- Establishment and transfer of command
  - Chain of command and unity of command

- **Planning/Organizational Structure**

- Management by objectives
  - Incident Action Plan (IAP)
  - Modular organization
  - Manageable span of control

- **Facilities and Resources**

- Comprehensive resource management
  - Incident locations and facilities

- **Communications/Information Management**

- Integrated communications
  - Information and intelligence management

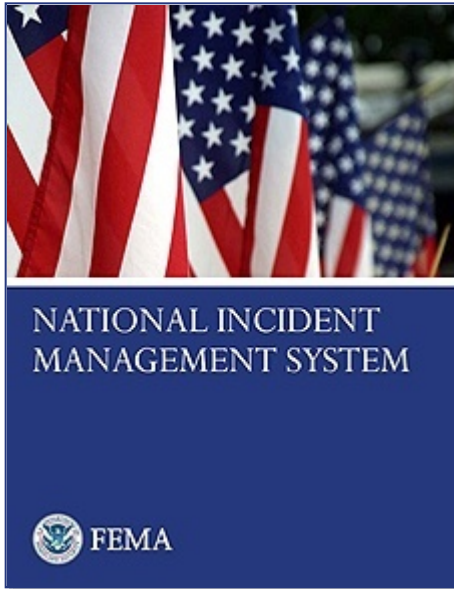
- **Professionalism**

- Accountability
  - Dispatch/Deployment



**FEMA**

# Command: Definition



**Command**: The act of directing, ordering, or controlling, by virtue of explicit statutory, regulatory, or delegated authority.

**At an incident scene, the Incident Commander has the authority to assume command!**



**FEMA**



# Transfer of Command



- Moves the responsibility for command from one Incident Commander to another.
- Must include a transfer of command briefing (which may be oral, written, or both).



**FEMA**

Visual 1.33  
Course Overview

# When Command Is Transferred



- A more qualified Incident Commander arrives.
- A jurisdiction or agency is legally required to take command.
- Incident complexity changes.
- The current Incident Commander needs to rest.



**FEMA**

# Discussion Question



**What would you  
include in a  
transfer of command  
briefing?**



**FEMA**

Visual 1.35  
Course Overview

# Chain of Command



## Chain of command:

- Is an orderly line of authority within the response organization.
- Allows incident managers to direct and control the actions of all personnel under their supervision.
- Avoids confusion by requiring that orders flow from supervisors.
- Does not prevent personnel from sharing information.



**FEMA**



# Unity of Command



Under unity of command, personnel:

- Report to only one incident supervisor.
- Receive work assignments only from the assigned supervisor.



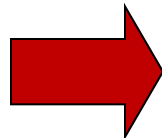
FEMA

Visual 1.37  
Course Overview

# ICS Features: Overview



- **Standardization**
  - Common terminology
- **Command**
  - Establishment and transfer of command
  - Chain of command and unity of command



## **Planning/Organizational Structure**

- **Management by objectives**
- **Incident Action Plan (IAP)**
- **Modular organization**
- **Manageable span of control**

- **Facilities and Resources**
  - Comprehensive resource management
  - Incident locations and facilities
- **Communications/Information Management**
  - Integrated communications
  - Information and intelligence management
- **Professionalism**
  - Accountability
  - Dispatch/Deployment



**FEMA**

# Management by Objectives



Priorities for incident objectives are:

**#1: Life Safety**

**#2: Incident Stabilization**

**#3: Property/  
Environmental  
Preservation**



**FEMA**

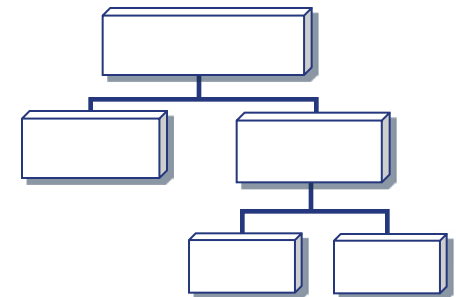
Visual 1.39  
Course Overview

# ICS Organization



Differs from day-to-day organizational structures and positions by:

- Using unique ICS position titles and organizational structures.
- **Assigning personnel based on expertise, not rank. For example, a director may not hold that title when deployed under an ICS structure.**



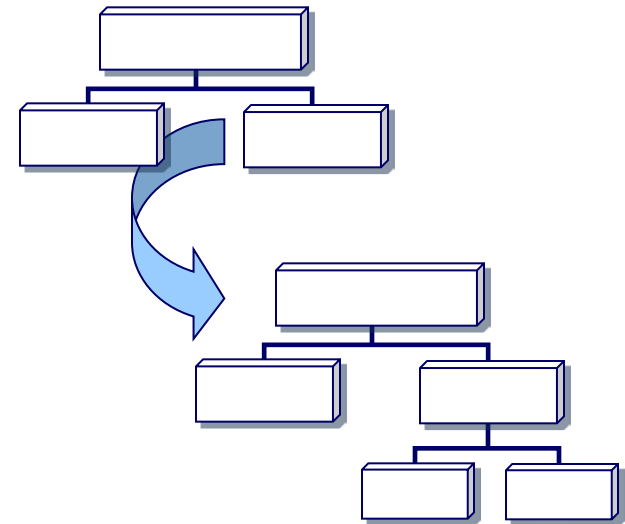
FEMA

# Modular Organization



Incident command organizational structure is based on:

- Size, type, and complexity of the incident.
- Specifics of the hazard environment created by the incident.
- Incident planning process and **incident objectives**.



FEMA

Visual 1.41  
Course Overview



# Incident Action Planning



Every incident must have an Incident Action Plan (IAP) that:

- Specifies the **incident objectives**.
- States the activities.
- **Covers a specified timeframe**, called an operational period.
- May be oral or written.

Incident  
Action  
Plan



FEMA

# Elements of an Incident Action Plan



Every IAP must have four elements:

- **What do we want to do?**
- **Who is responsible for doing it?**
- **How do we communicate with each other?**
- **What is the procedure if someone is injured?**



**FEMA**

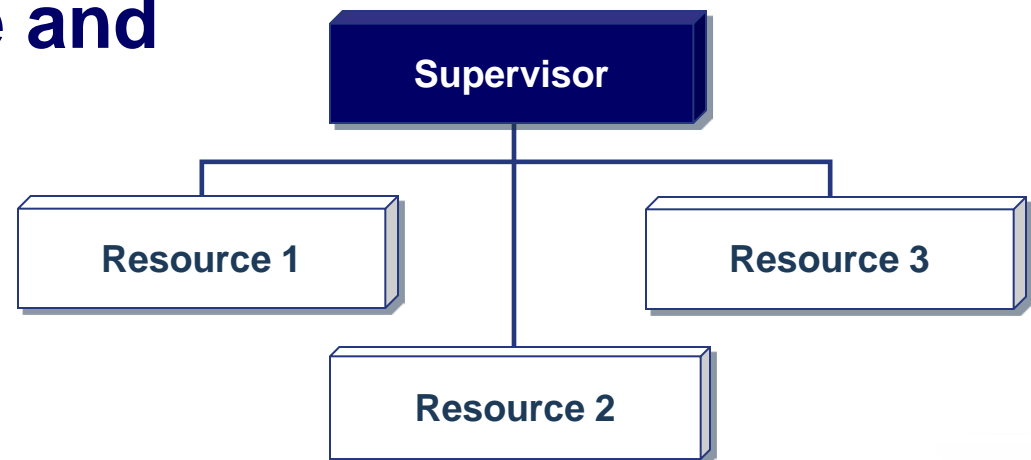
Visual 1.43  
Course Overview

# Manageable Span of Control



## Span of control:

- Pertains to the number of individuals or resources that one supervisor can manage effectively during an incident.
- Is key to effective and efficient incident management.



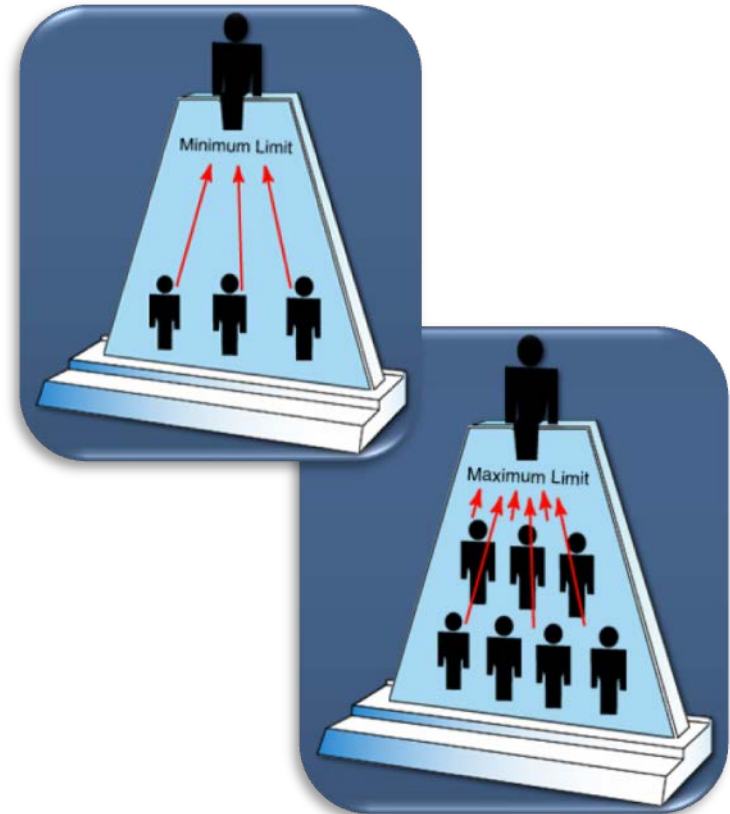
FEMA

# ICS Management: Span of Control



ICS span of control for any supervisor:

- Is **between 3 and 7** subordinates.
- **Optimally does not exceed 5** subordinates.

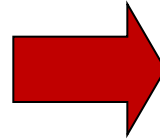


FEMA

# ICS Features: Overview



- **Standardization**
  - Common terminology
- **Command**
  - Establishment and transfer of command
  - Chain of command and unity of command
- **Planning/Organizational Structure**
  - Management by objectives
  - Incident Action Plan (IAP)
  - Modular organization
  - Manageable span of control



## Facilities and Resources

- Comprehensive resource management
- Incident locations and facilities
- **Communications/Information Management**
  - Integrated communications
  - Information and intelligence management
- **Professionalism**
  - Accountability
  - Dispatch/Deployment



**FEMA**



# Incident Facility Map Symbols



**Incident  
Command  
Post**



**Staging  
Area**



**Base**



**Camp,  
Helibase,  
and Helispot**



**H-3**



**FEMA**

**Visual 1.47  
Course Overview**

# Incident Facilities: Summary



- A single **Incident Command Post** should be established on all incidents—even small ones!
- Incidents may require additional facilities (e.g., a call center).
- Areas may be predesignated incident facilities for the surrounding community (e.g., shelters, staging areas, helibases, medical centers).



FEMA

# Resources: Definition



**Resources** are personnel and major items of equipment, supplies, and facilities available or potentially available for assignment to incident operations and for which status is maintained.



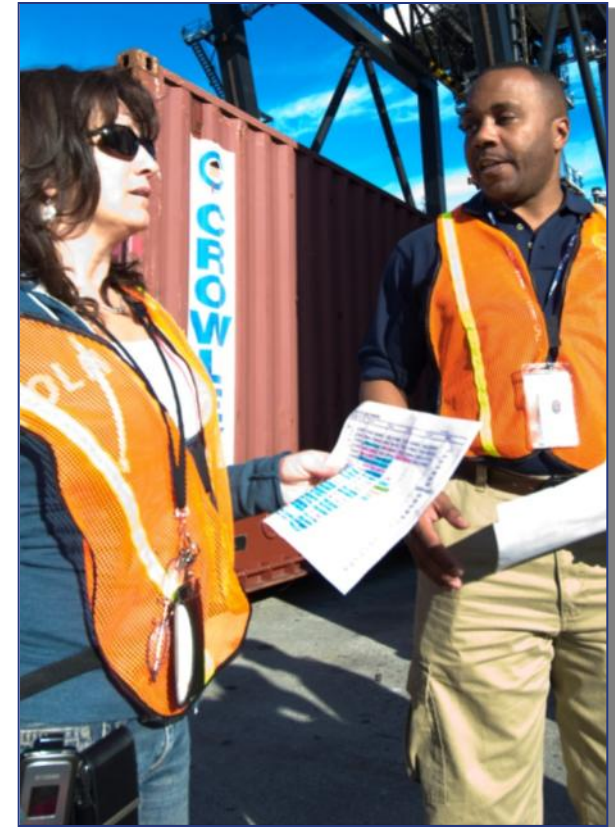
**FEMA**

# Resource Management



Resource management includes processes for:

- Categorizing resources.
- Ordering resources.
- Dispatching resources.
- Tracking resources.
- Recovering resources.
- Reimbursing other organizations.



**FEMA**

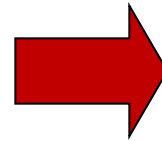
Visual 1.50  
Course Overview



# ICS Features: Overview



- **Standardization**
  - Common terminology
- **Command**
  - Establishment and transfer of command
  - Chain of command and unity of command
- **Planning/Organizational Structure**
  - Management by objectives
  - Incident Action Plan (IAP)
  - Modular organization
  - Manageable span of control



- **Facilities and Resources**
  - Comprehensive resource management
  - Incident locations and facilities
- **Communications/Information Management**
  - Integrated communications
  - Information and intelligence management
- **Professionalism**
  - Accountability
  - Dispatch/Deployment



**FEMA**



# Integrated Communications



Incident communications are facilitated through:

- The development and use of a common **communications plan**.
- The interoperability of communication equipment, procedures, and systems.



Before an incident, it is critical to develop an integrated voice and data communications system (equipment, systems, and protocols).



**FEMA**

# Discussion Question



**What are some examples of information and intelligence used to manage an incident?**



**FEMA**

Visual 1.53  
Course Overview

# ICS Features: Overview



- **Standardization**
    - Common terminology
  - **Command**
    - Establishment and transfer of command
    - Chain of command and unity of command
  - **Planning/Organizational Structure**
    - Management by objectives
    - Incident Action Plan (IAP)
    - Modular organization
    - Manageable span of control
  - **Facilities and Resources**
    - Comprehensive resource management
    - Incident locations and facilities
  - **Communications/Information Management**
    - Integrated communications
    - Information and intelligence management
-  **Professionalism**
- Accountability
  - Dispatch/Deployment



**FEMA**

# Accountability (1 of 2)



- **Check-In.** All responders must report in to receive an assignment in accordance with the procedures established by the Incident Commander.
- **Incident Action Plan.** Response operations must be coordinated as outlined in the IAP.
- **Unity of Command.** Each individual will be assigned to only one supervisor.

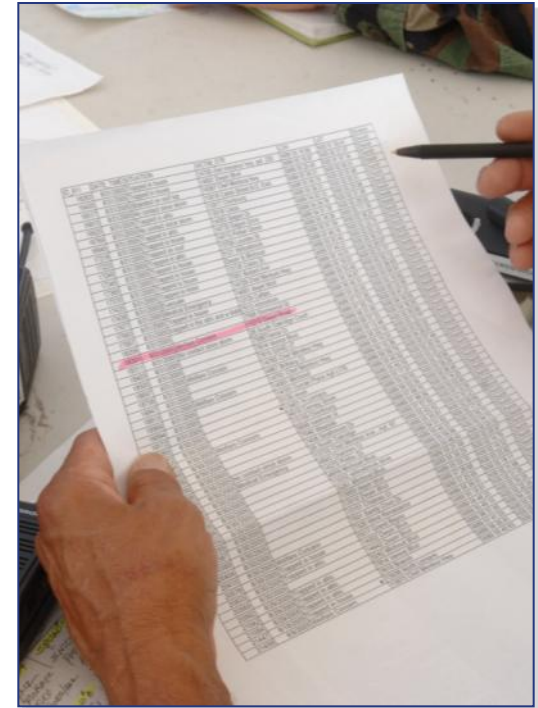


**FEMA**

# Accountability (2 of 2)



- **Span of Control.** Supervisors must be able to adequately supervise and control their subordinates, as well as communicate with and manage all resources under their supervision.
- **Resource Tracking.** Supervisors must record and report resource status changes as they occur.



**FEMA**

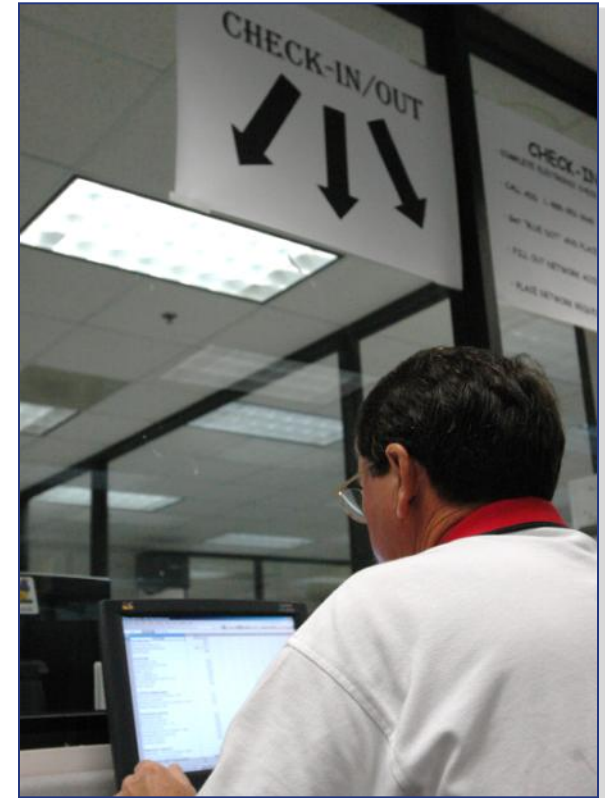


# Dispatch/Deployment



At any incident:

- **The situation must be assessed and the response planned.**
- Managing resources **safely** and effectively is the most important consideration.
- Personnel and equipment should respond only when requested or when dispatched by an appropriate authority.



FEMA

Visual 1.57  
Course Overview

# Discussion Question



**Why shouldn't personnel arrive at an incident without being requested or dispatched?**



**FEMA**

Visual 1.58  
Course Overview

# Summary (1 of 2)



## ICS:

- Utilizes management features including the use of **common terminology** and a modular organizational structure.
- Emphasizes effective planning through the use of management by objectives and **Incident Action Plans**.
- Supports responders by providing data they need through effective information and intelligence management.



**FEMA**

# Summary (2 of 2)



## ICS:

- Utilizes the principles of chain of command, unity of command, and transfer of command.
- Ensures full utilization of incident resources by maintaining a manageable span of control, establishing predesignated incident facilities, implementing resource management practices, and ensuring integrated communications.



FEMA

# **Unit 4:**

## **Incident Commander and Command Staff Functions**



**FEMA**

**Visual 1.61  
Course Overview**



# Unit Objectives



- Identify the five major ICS management functions.
- Identify the position titles associated with the Command Staff.
- Describe the role and function of the Incident Commander.
- Describe the role and function of the Command Staff.

## Unit List

- ✓ Course Overview
- ✓ ICS Overview
- ✓ ICS Features & Principles
- ➔ Incident Commander & Command Staff Functions
  - General Staff Functions
  - Unified Command
  - Course Summary – Putting It All Together



**FEMA**

# Management Function Descriptions

Function	Description
Incident Command	<ul style="list-style-type: none"><li>• Establishes incident objectives, strategies, and priorities.</li><li>• <b>Assume overall responsibility for the incident.</b></li></ul>
Operations	<ul style="list-style-type: none"><li>• <b>Determines tactics and resources for achieving objectives.</b></li><li>• Directs the tactical response.</li></ul>
Planning	<ul style="list-style-type: none"><li>• Collects and analyzes information.</li><li>• Tracks resources.</li><li>• Maintains documentation.</li></ul>
Logistics	<ul style="list-style-type: none"><li>• <b>Provides resources and needed services.</b></li></ul>
Finance/ Administration	<ul style="list-style-type: none"><li>• Accounts for expenditures, claims, and compensation.</li><li>• <b>Procures needed resources.</b></li></ul>



**FEMA**

# Incident Commander



**The Incident Commander is responsible for all ICS management functions until delegated.**



**FEMA**

# Discussion Question



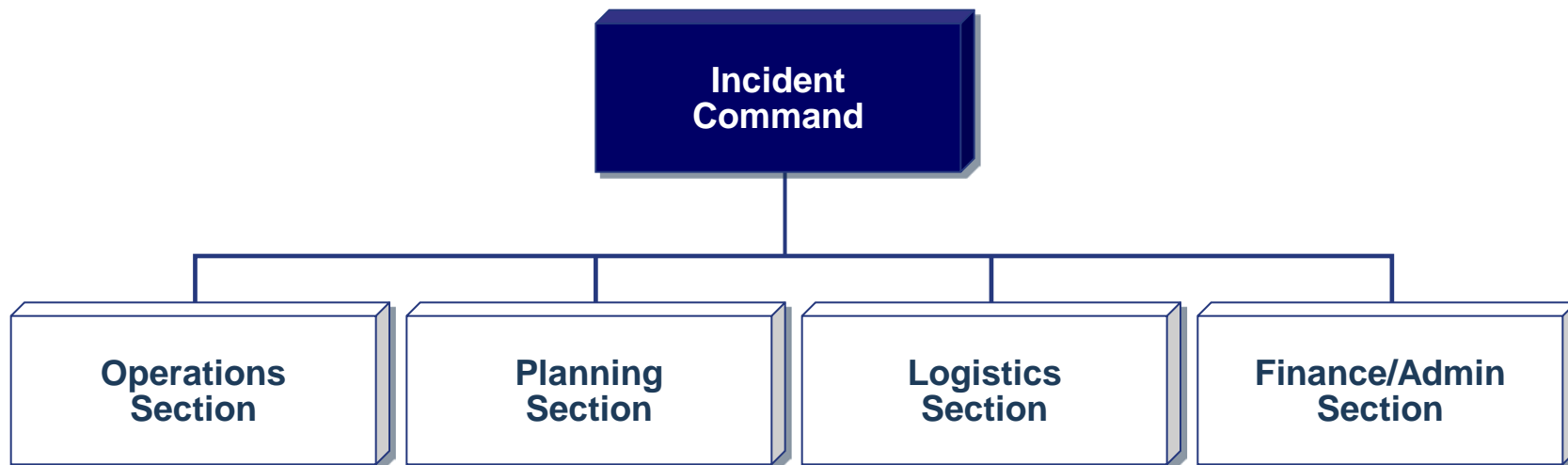
**Why is it critical to establish command from the beginning of an incident?**



**FEMA**

Visual 1.65  
Course Overview

# Delegating Incident Management Functions



**Remember:** The Incident Commander only creates those Sections that are needed. If a Section is not staffed, the Incident Commander will personally manage those functions.



FEMA



# Incident Commander Responsibilities



**The Incident Commander is responsible for:**

- **Ensuring incident safety.**
- **Providing information to internal and external stakeholders.**
- **Establishing and maintaining liaison with other agencies participating in the incident.**



**FEMA**

Visual 1.67  
Course Overview

# Discussion Question



**Who has overall  
responsibility at an  
incident scene?**



**FEMA**

Visual 1.68  
Course Overview

# Deputy Incident Commander



**A Deputy Incident Commander may be designated to:**

- Perform specific tasks as requested by the Incident Commander.
- Perform the incident command function in a relief capacity.
- Represent an assisting agency that shares jurisdiction.



**FEMA**

Visual 1.69  
Course Overview

# Discussion Question



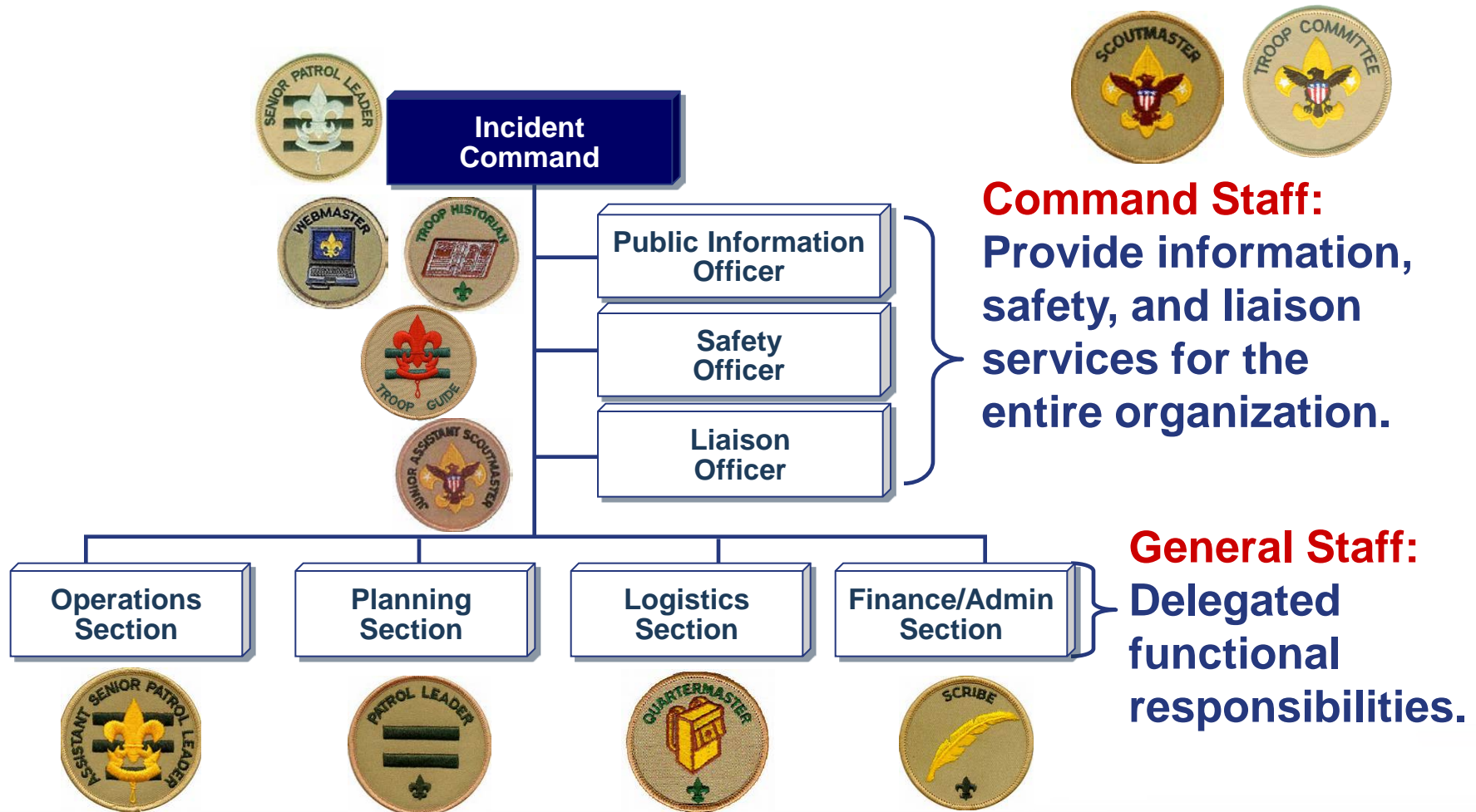
**What needs to occur  
before the Deputy  
Incident Commander  
assumes control?**



**FEMA**

Visual 1.70  
Course Overview

# Expanding the Organization



FEMA



# Public Information Officer (PIO)



Incident  
Command



Public Information  
Officer

Safety  
Officer

Liaison  
Officer

## The Public Information Officer:

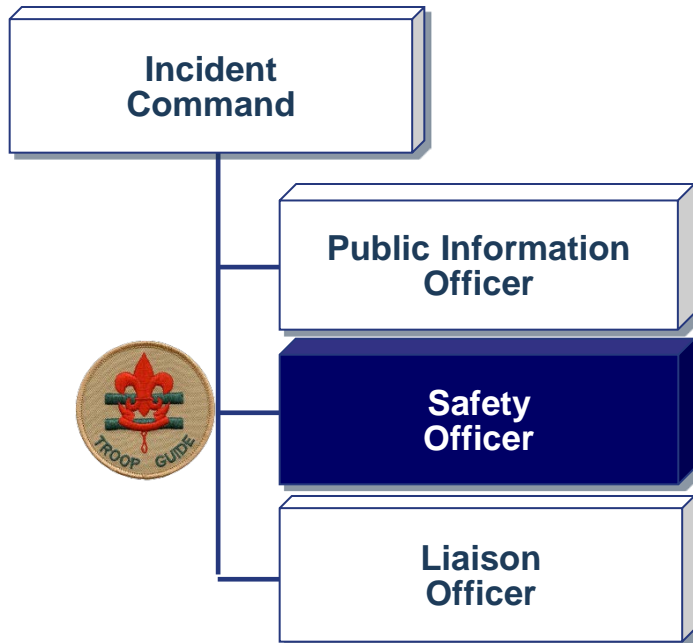
- Advises the Incident Commander on information dissemination and media relations.
- Obtains information from and provides information to the Planning Section, the community, and **the media**.

**The Incident Commander approves information that the PIO releases.**



**FEMA**

# Safety Officer



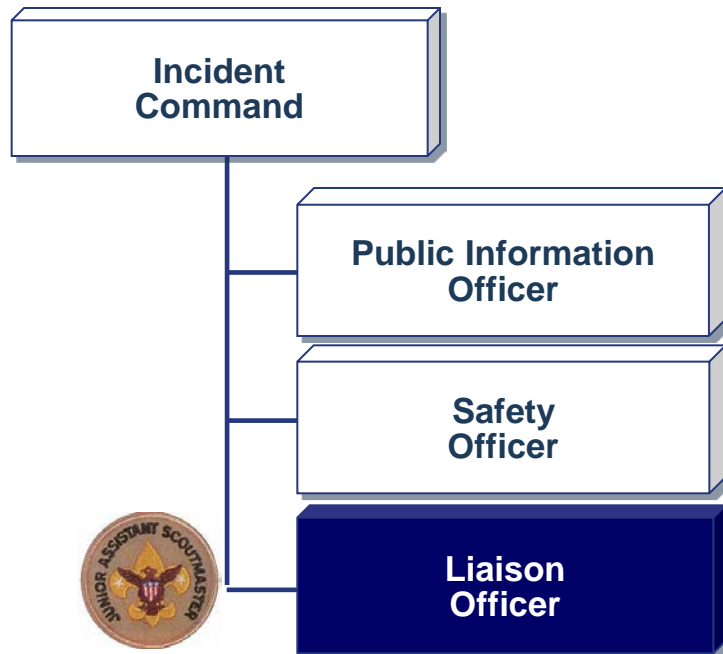
## The Safety Officer:

- Advises the Incident Commander on issues regarding incident safety.
- Works with Operations to ensure safety of field personnel.
- Ensures safety of all incident personnel.



FEMA

# Liaison Officer



## The Liaison Officer:

- Assists the Incident Commander by **serving as point of contact for representatives from other response organizations.**
- Provides briefings to and answers questions from supporting organizations.



FEMA

# Discussion Question



Who within your organization is qualified to serve as Command Staff?



FEMA

Visual 1.75  
Course Overview

# Summary



**Are you now able to:**

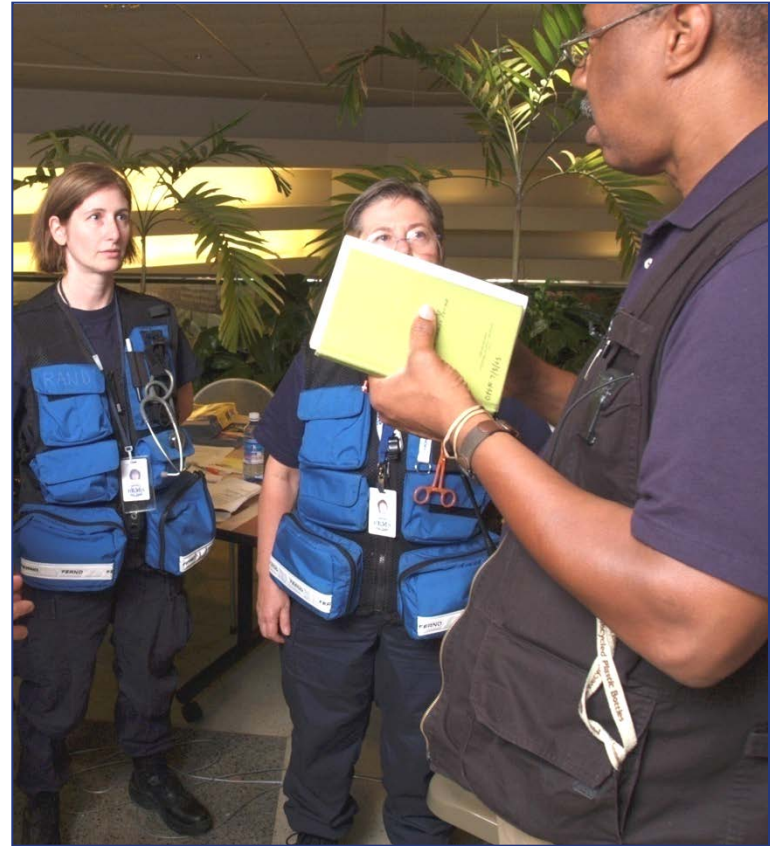
- **Identify the five major ICS management functions?**
- **Identify the position titles associated with the Command Staff?**
- **Describe the role and function of the Incident Commander?**
- **Describe the role and function of the Command Staff?**



**FEMA**



# Unit 5: General Staff Functions



**FEMA**

Visual 1.77  
Course Overview

# Unit Objective



**Describe the roles and functions of the General Staff, including:**

- **Operations Section**
- **Planning Section**
- **Logistics Section**
- **Finance/Administration Section**

## Unit List

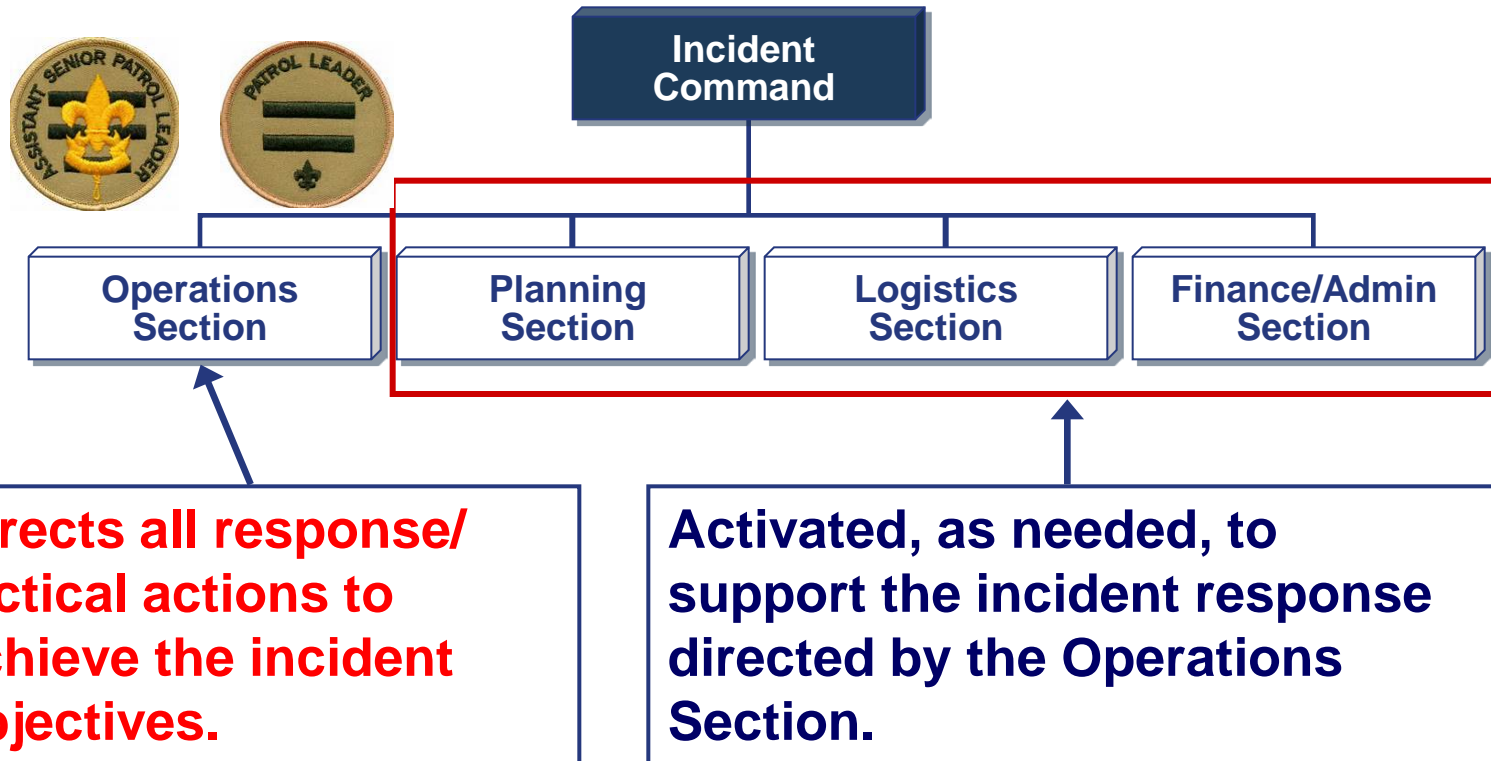
- ✓ **Course Overview**
- ✓ **ICS Overview**
- ✓ **ICS Features & Principles**
- ✓ **Incident Commander & Command Staff Functions**
- ➔ **General Staff Functions**
  - **Unified Command**
  - **Course Summary – Putting It All Together**



**FEMA**

**Visual 1.78**  
**Course Overview**

# General Staff Overview – Expanding Incidents



**FEMA**

# Expanding Incidents



Expanding incidents may add supervisory layers to the organizational structure as needed.



**FEMA**

Visual 1.80  
Course Overview

# ICS Supervisory Position Titles



Organizational Level	Supervisor Title	Support Position Title
Incident Command	Incident Commander	Deputy
<b>Command Staff</b>	<b>Officer</b>	<b>Assistant</b>
General Staff (Section)	Chief	Deputy
Branch	Director	Deputy
Division/Group	Supervisor	N/A
Unit	Leader	Manager
Strike Team/Task Force	Leader	Single Resource Boss



**FEMA**

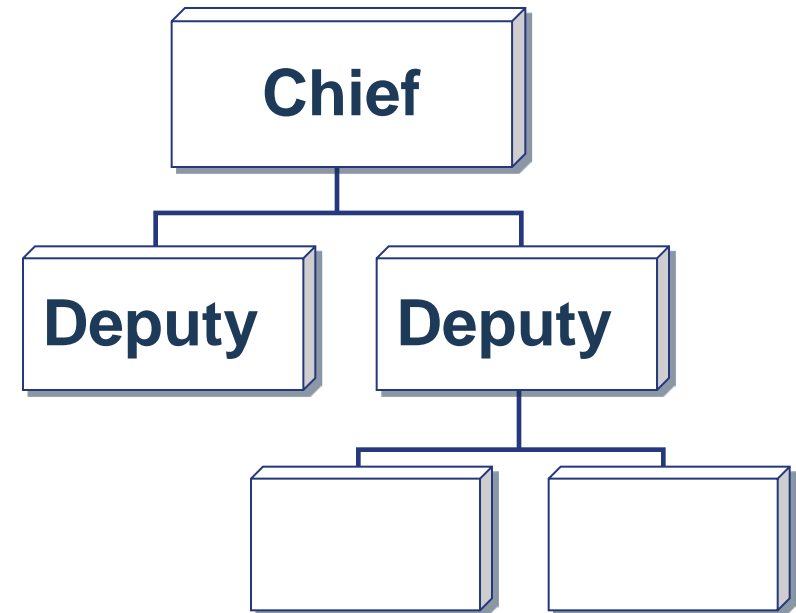
Visual 1.81  
Course Overview



# ICS Section Chiefs and Deputies



- **Section Chiefs may have one or more deputies.**
- **Deputies must be as proficient and qualified as the Section Chief.**

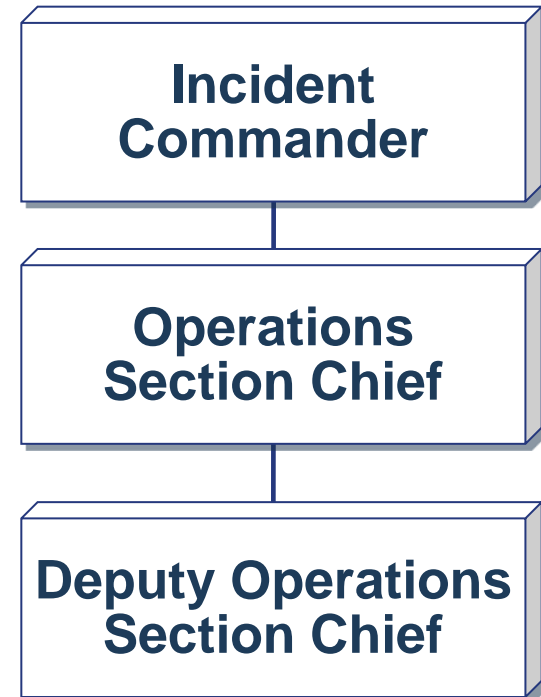


**FEMA**

# Increasing Interagency Coordination



**When an incident involves multiple organizations, assigning Deputies from other organizations can increase interagency coordination.**



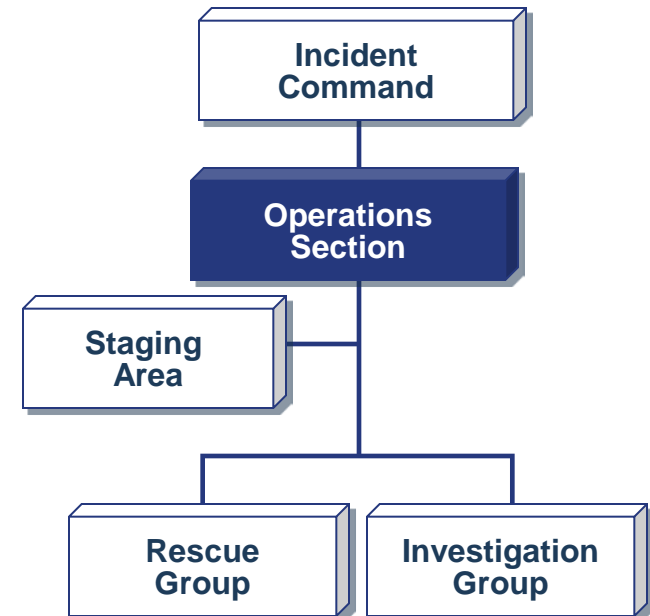
**FEMA**

Visual 1.83  
Course Overview

# Operations Section: Major Activities



- **Directs and coordinates all incident tactical operations.**
- **Is typically one of the first organizations to be assigned to the incident.**
- **Expands from the bottom up.**
- **Has the most incident resources.**
- **May have Staging Areas and special organizations.**

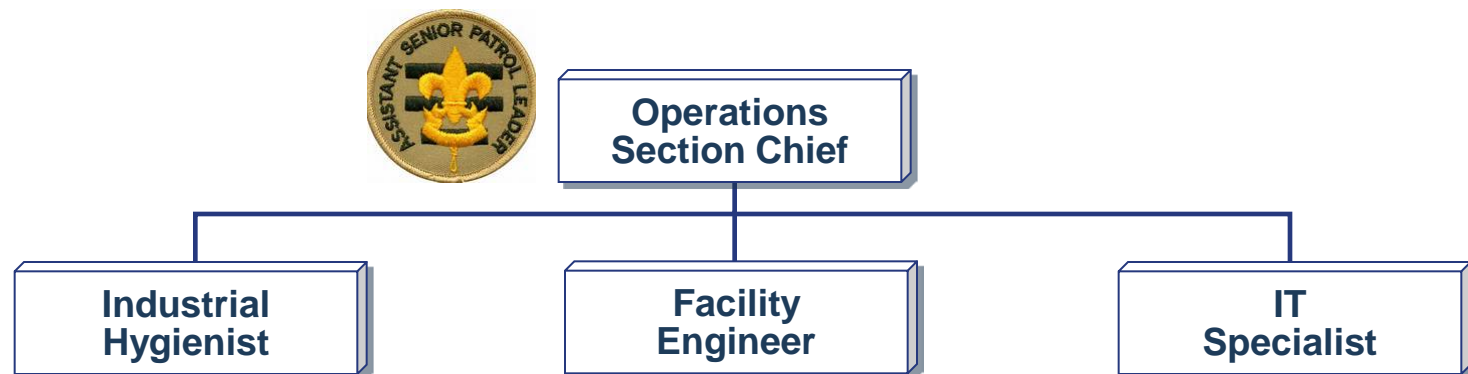


**FEMA**

# Operations: Single Resources



On a smaller incident, the Operations Section may be comprised of an Operations Section Chief and single resources.



**FEMA**

# Operations: Teams



Single resources may be organized into teams. Using standard ICS terminology, the two types of team configurations are:

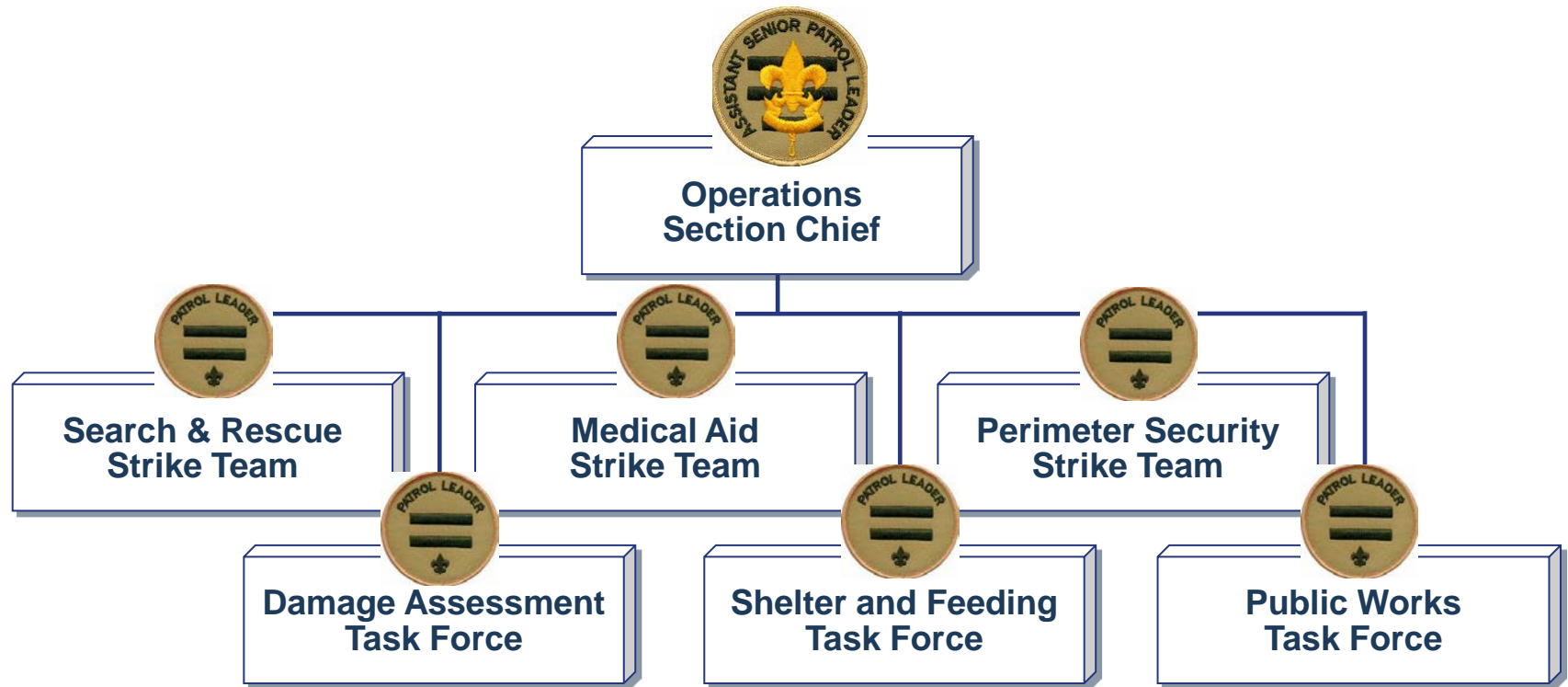
- **Task Forces**, which are a combination of mixed resources with common communications supervised by a Leader.
- **Strike Teams**, which include all similar resources with common communications supervised by a Leader.



FEMA



# Sample Strike Teams and Task Forces

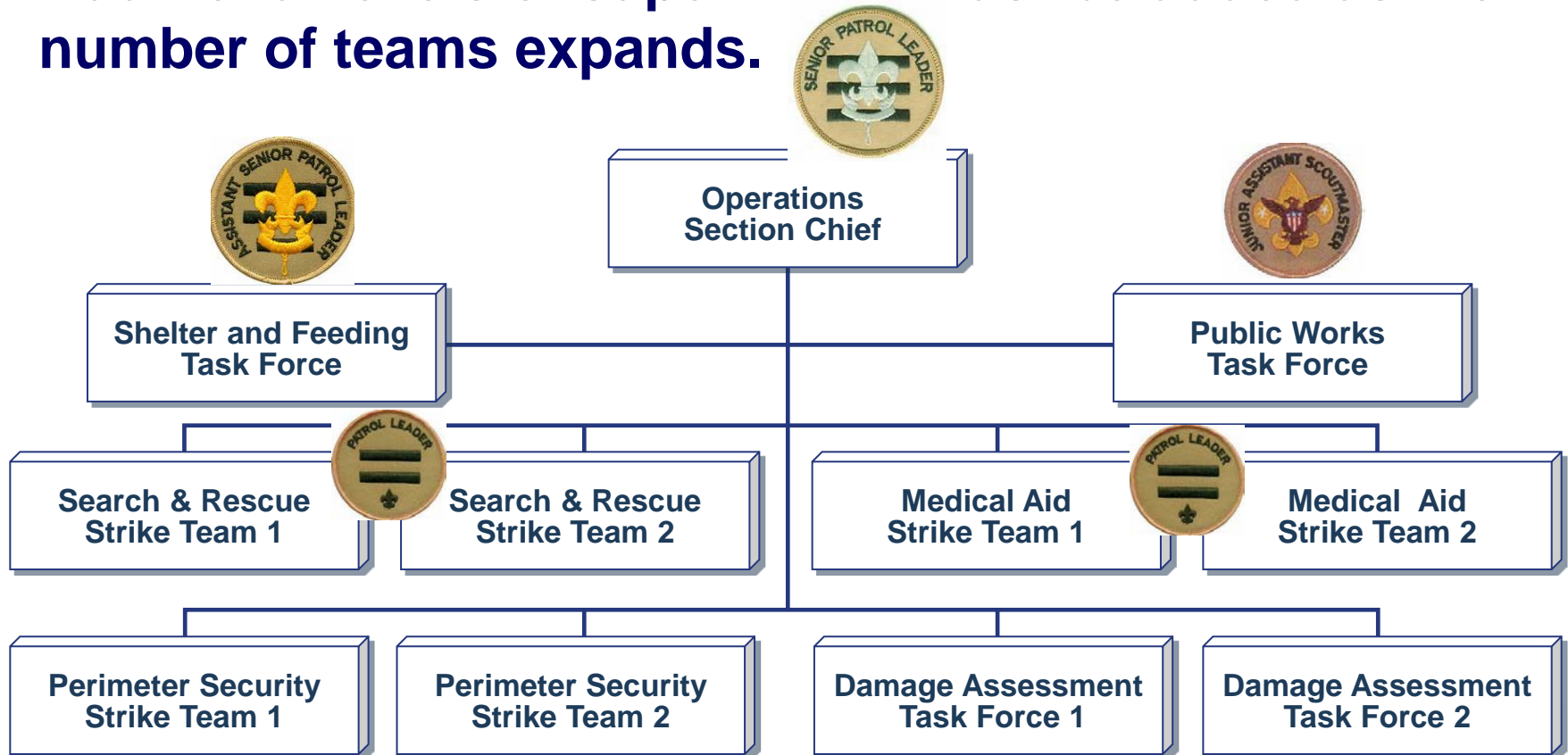


**FEMA**

# Operations: Too Many Teams!



Additional levels of supervision must be added as the number of teams expands.



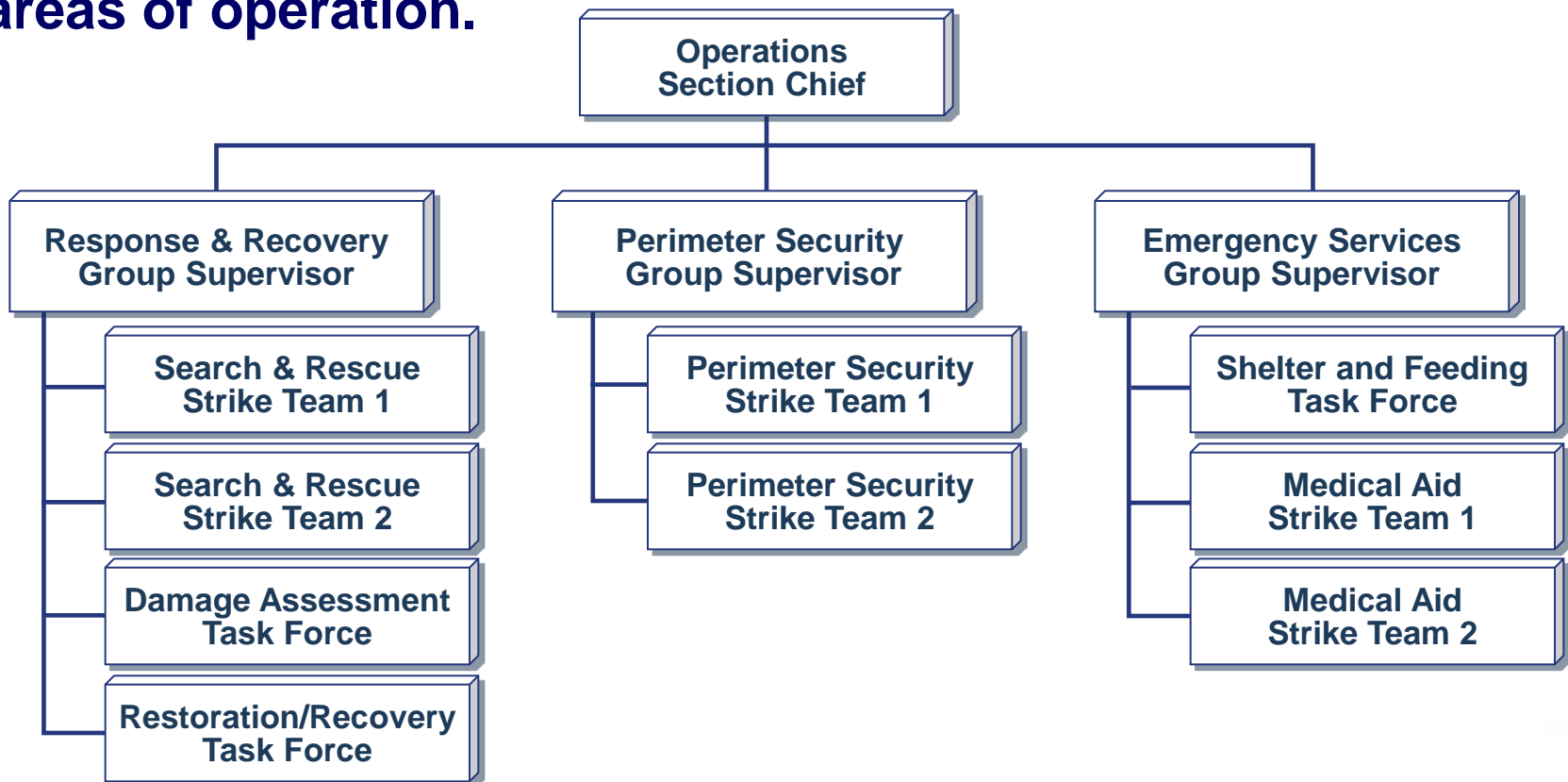
**FEMA**

Visual 1.88  
Course Overview

# The Solution: Add Functional Groups



**Groups, led by a Supervisor, are used to perform functional areas of operation.**

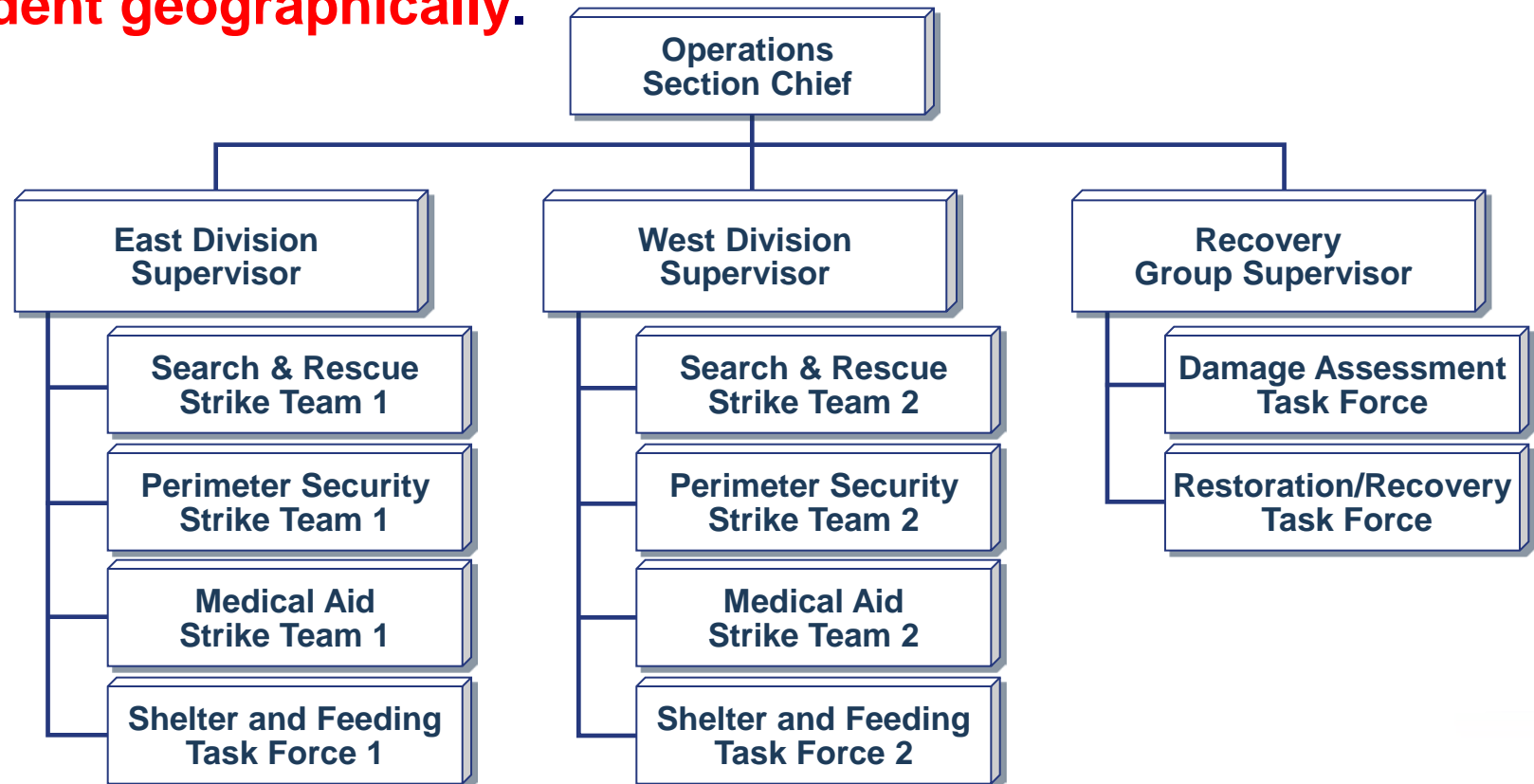


**FEMA**

# Geographic Divisions & Groups



**Divisions**, led by a Supervisor, are used to **divide an incident geographically**.



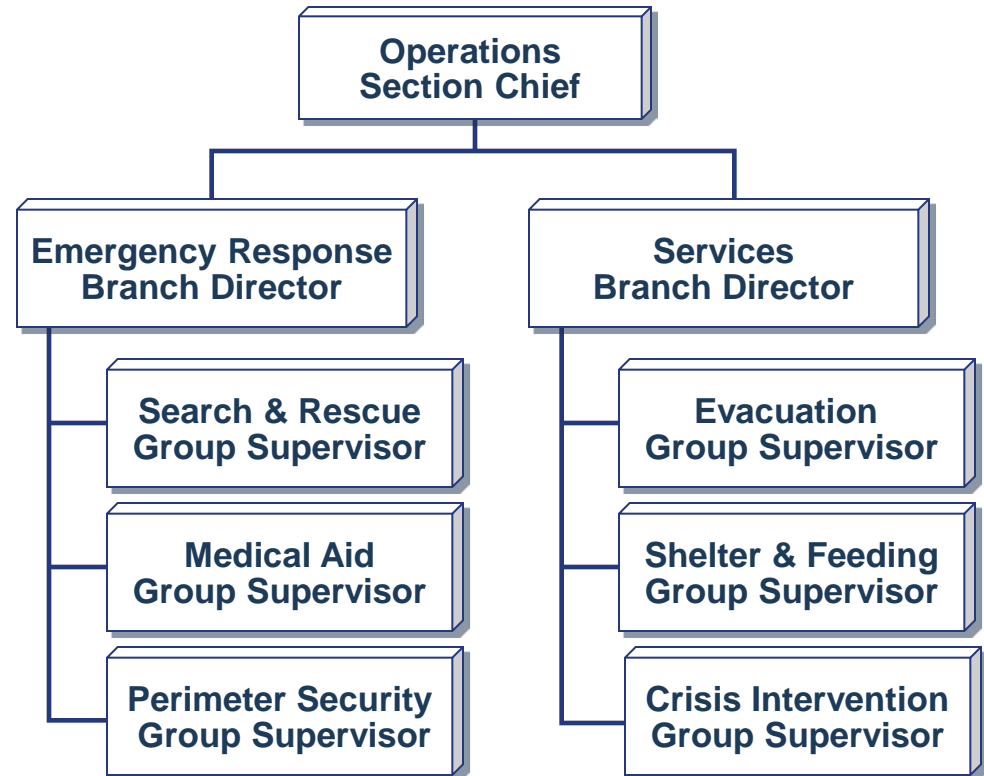
**FEMA**

# Complex Incidents



**Adding Branches helps to:**

- **Supervise Groups and Divisions.**
- **Further reduce span of control.**



**FEMA**

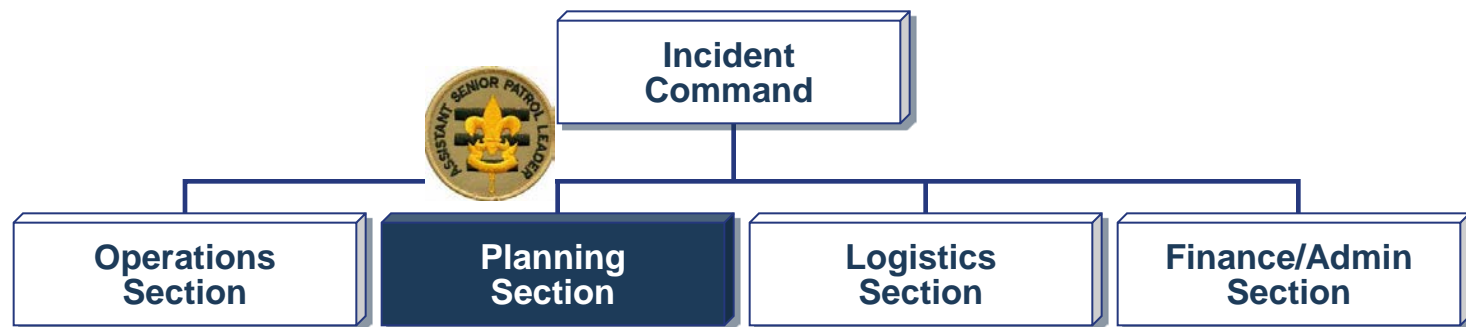
Visual 1.91  
Course Overview



# Planning Section: Major Activities



- Collecting, evaluating, and displaying incident intelligence and information.
- **Preparing and documenting Incident Action Plans.**
- Tracking resources assigned to the incident.
- Maintaining incident documentation.
- Developing plans for demobilization.



FEMA

# Planning Section: Units



## Planning Section

Resources  
Unit

Situation  
Unit

Documentation  
Unit

Demobilization  
Unit

Technical  
Specialists



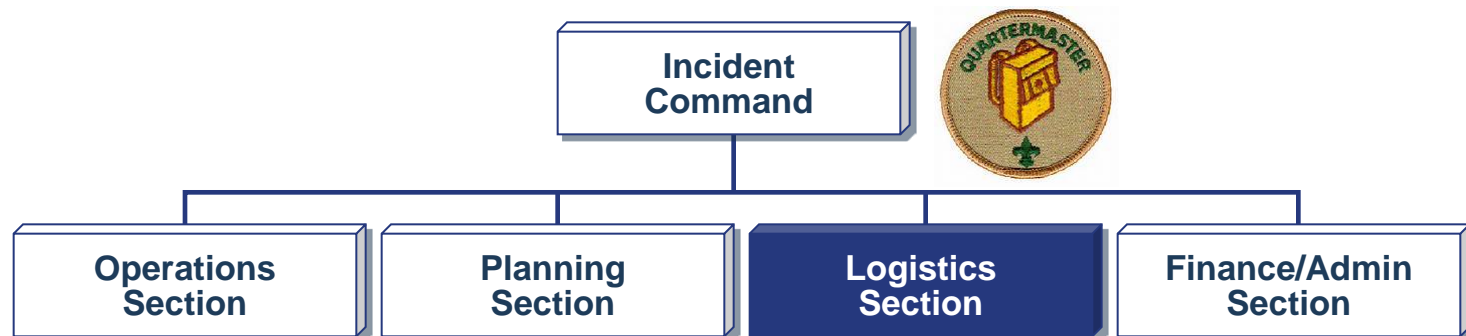
**FEMA**

Visual 1.93  
Course Overview

# Logistics Section: Major Activities



- Ordering, obtaining, maintaining, and accounting for essential personnel, equipment, and supplies.
- Providing **communication** planning and resources.
- Setting up **food** services for responders.
- Setting up and maintaining incident facilities.
- Providing support **transportation**.
- Providing **medical** services for injured personnel.

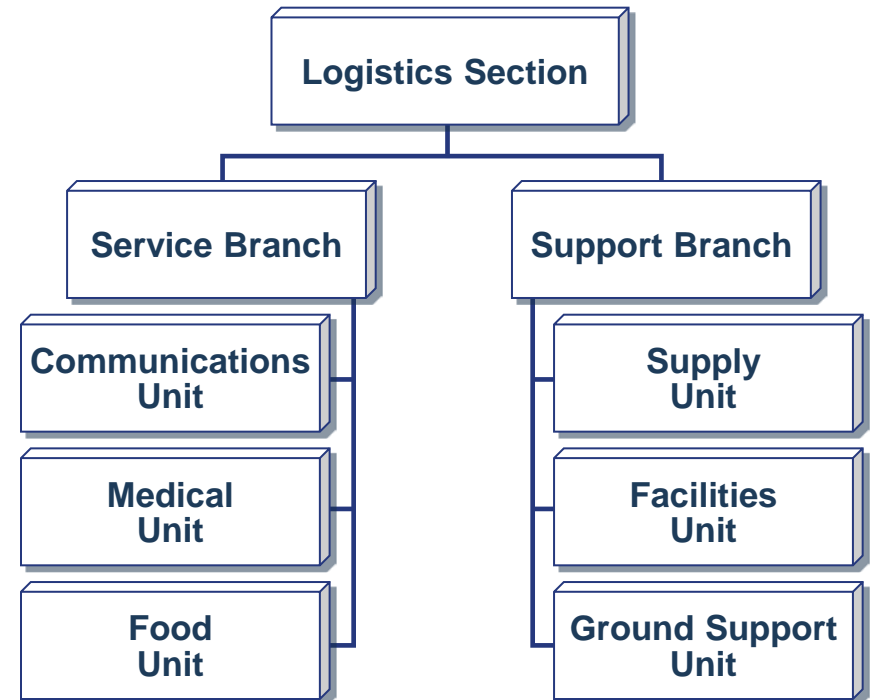


FEMA

# Logistics Section: Branches and Units



- The Logistics Section can be further staffed by two Branches and six Units.
- The titles of the Units are descriptive of their responsibilities.



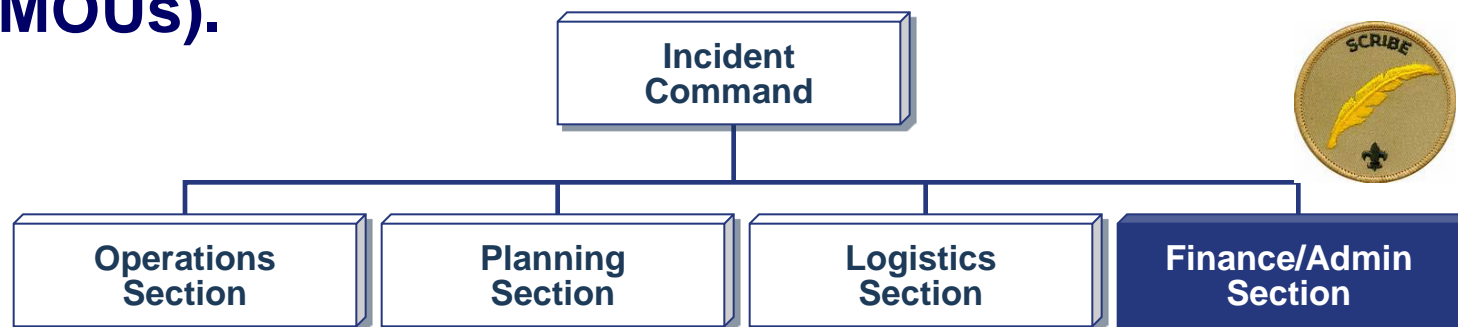
FEMA

## Finance/Administration Section: Major Activities



The Finance/Administration Section is responsible for:

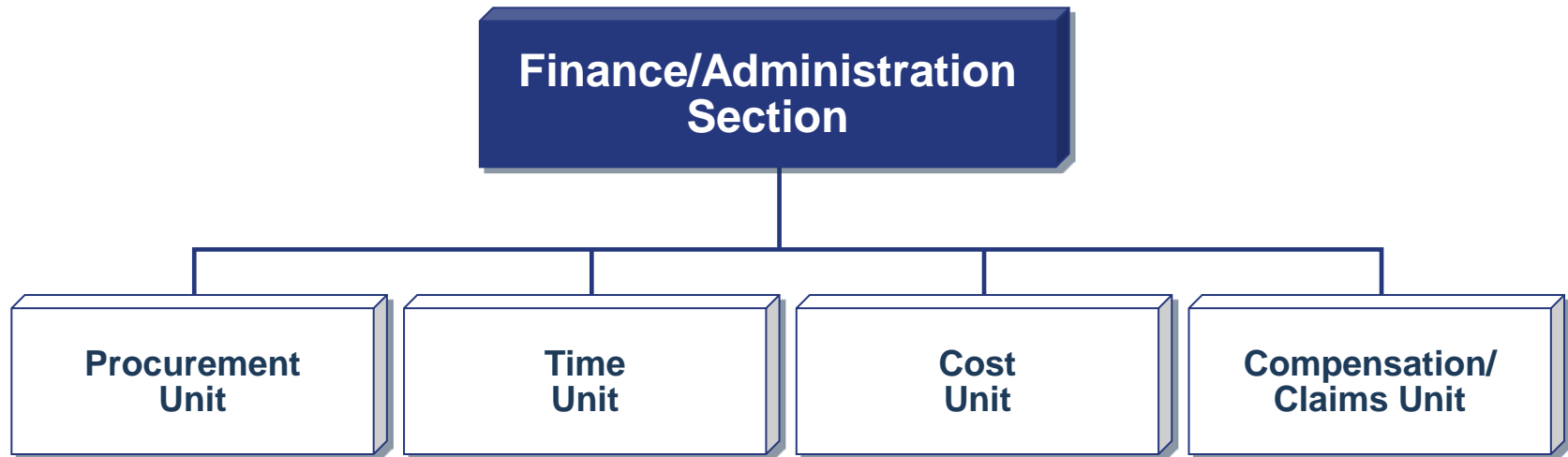
- **Contract negotiation** and monitoring.
- Timekeeping.
- Cost analysis.
- Compensation for injury or damage to property.
- Documentation for reimbursement (e.g., under MOUs).



**FEMA**



# Finance/Administration Section: Units



**FEMA**

# Summary



Are you able to describe the roles and functions of the:

- Operations Section?
- Planning Section?
- Logistics Section?
- Finance/Administration Section?

## Unit List

- ✓ Course Overview
- ✓ ICS Overview
- ✓ ICS Features & Principles
- ✓ Incident Commander & Command Staff Functions
- ✓ General Staff Functions
- Unified Command
- Course Summary – Putting It All Together



**FEMA**

# Unit 6: Unified Command



District or Council - Level



**FEMA**

Visual 1.99  
Course Overview

# Unit Objectives



- **Define Unified Command.**
- **List the advantages of Unified Command.**
- **Identify the primary features of Unified Command.**
- **Differentiate between command and coordination.**

## Unit List

- ✓ **Course Overview**
- ✓ **ICS Overview**
- ✓ **ICS Features & Principles**
- ✓ **Incident Commander & Command Staff Functions**
- ✓ **General Staff Functions**
- ➔ **Unified Command**
- **Course Summary – Putting It All Together**



**FEMA**

Visual 1.100  
Course Overview

# Unified Command



The Unified Command organization consists of the **Incident Commanders** from the various jurisdictions or organizations operating together to form a **single command structure**.



Fire &  
Rescue  
Incident  
Commander

Local Law  
Enforcement  
Incident  
Commander

HazMat  
Incident  
Commander



FEMA



# Unified Command Benefits



- A **shared understanding** of priorities and restrictions.
- A **single set of incident objectives**.
- Collaborative strategies.
- Improved internal and external information flow.
- Less duplication of efforts.
- Better resource utilization.



FEMA

# Unified Command Features

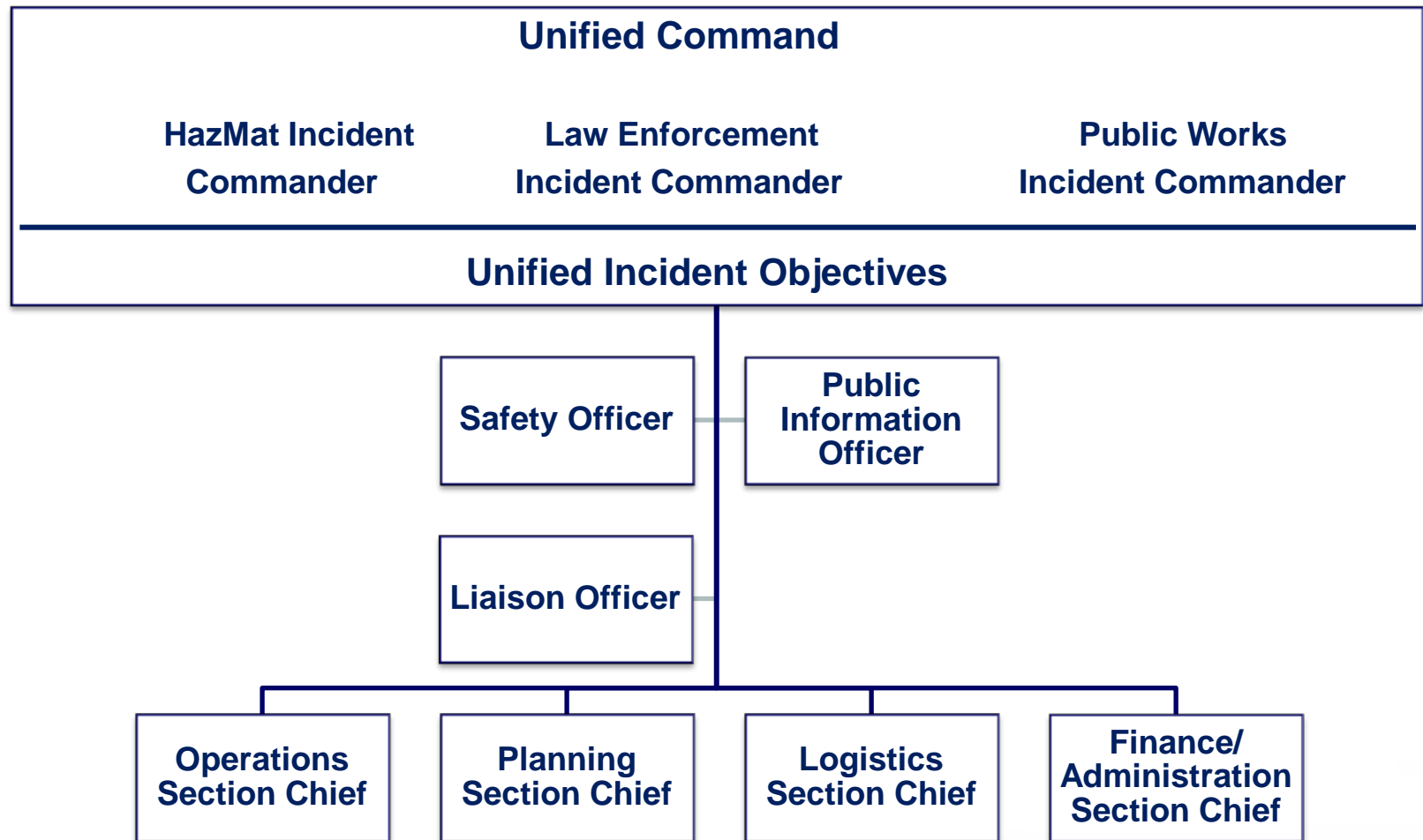


- A single integrated incident organization
- Co-located (shared) facilities
- One set of incident objectives, single planning process, and Incident Action Plan
- Integrated General Staff – Only one Operations Section
- Coordinated process for resource ordering



FEMA

# Possible Organization



**FEMA**

# Discussion Question



**What are potential  
barriers to  
implementing Unified  
Command?**



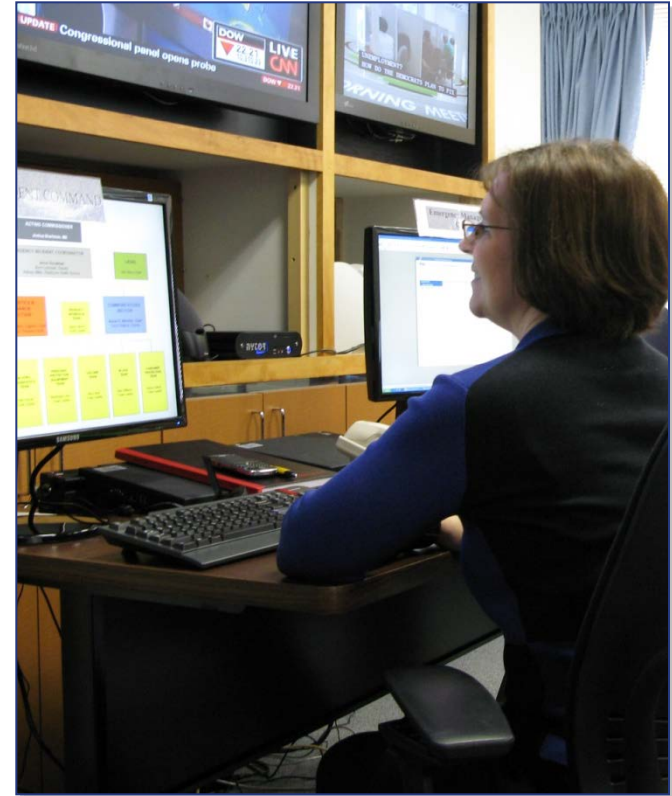
**FEMA**

Visual 1.105  
Course Overview

# Making Unified Command Work



- Include key community response personnel.
- Make sure that first responders know their legal and ethical responsibilities.
- Learn ICS.
- Train and exercise together.



**FEMA**

Visual 1.106  
Course Overview



# Incident Coordination



**Coordination activities include:**

- **Establishing policy.**
- **Collecting information.**
- **Establishing priorities.**
- **Resolving resource issues.**
- **Facilitating support.**
- **Synchronizing public messages.**



**FEMA**

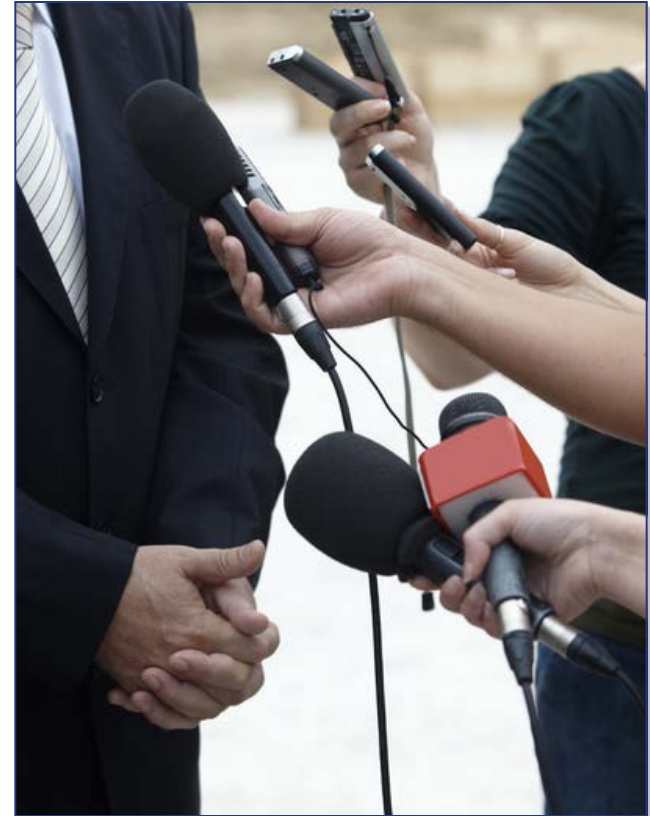
Visual 1.107  
Course Overview

# Joint Information Center



## The Joint Information Center (JIC):

- May be established to coordinate public information activities.
- Serves as the central point of contact for all news media.



FEMA

# Summary



**Are you now able to:**

- **Define Unified Command?**
- **List the advantages of Unified Command?**
- **Identify the primary features of Unified Command?**
- **Differentiate between command and coordination?**

## Unit List

- ✓ **Course Overview**
- ✓ **ICS Overview**
- ✓ **ICS Features & Principles**
- ✓ **Incident Commander & Command Staff Functions**
- ✓ **General Staff Functions**
- ✓ **Unified Command**
- ➔ **Course Summary – Putting It All Together**

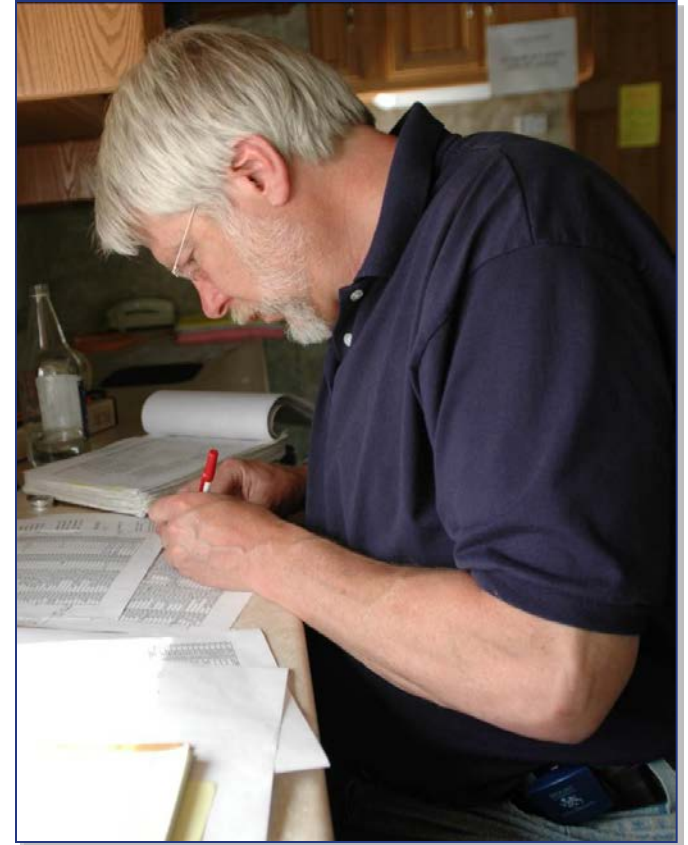


**FEMA**

Visual 1.109  
Course Overview

# **Unit 7:**

## **Course Summary – Putting It All Together**



**FEMA**

**Visual 1.110  
Course Overview**



# Unit Objectives



- Describe the steps to take to ensure you are ready to assume ICS responsibilities.
- Assess your organization's readiness for implementing ICS.
- Take the final exam.

## Unit List

- ✓ Course Overview
- ✓ ICS Overview
- ✓ ICS Features & Principles
- ✓ Incident Commander & Command Staff Functions
- ✓ General Staff Functions
- ✓ Unified Command
- Course Summary – Putting It All Together



FEMA



# Assuming Accountability



**ICS requires that you be accountable for:**

- **Abiding by policies, procedures, and guidelines.**
- **Working on objectives outlined in the Incident Action Plan.**
- **Ensuring unity of command and chain of command by taking directions from your incident supervisor.**
- **Managing your stress and being professional during the incident.**



**FEMA**

# Dispatch/Deployment and Check-In



**Do you know the procedures for:**

- **Being dispatched/deployed to an incident?**
- **Checking in at the incident scene?**



**FEMA**

**Visual 1.113  
Course Overview**

# Initial Briefing



## Briefings should include:

- Situation assessment.
- Job responsibilities.
- Identification of coworkers.
- Location of work area.
- Identification of break areas.
- Instructions for obtaining resources.
- Operational periods.
- Required safety procedures.



**FEMA**

Visual 1.114  
Course Overview

# Lengthy Assignments



**Have you:**

- **Assembled a go-kit?**
- **Prepared personal items needed for your estimated length of stay?**
- **Made arrangements to take care of your personal matters?**



**FEMA**

Visual 1.115  
Course Overview



# Demobilization



**At the end of your assignment:**

- **Complete all tasks and required forms/reports.**
- **Brief replacements, subordinates, and supervisor.**
- **Evaluate the performance of subordinates.**
- **Follow check-out procedures.**
- **Return any incident-issued equipment or other nonexpendable supplies.**
- **Complete post-incident reports, critiques, evaluations, and medical followup.**
- **Complete all time records or other accounting obligations.**



**FEMA**



# Making ICS Work!



**ICS works when everyone commits to:**

- **Following the chain of command.**
- **Reporting critical information.**
- **Waiting to be dispatched.**



**FEMA**

Visual 1.117  
Course Overview

# Additional Resources



Emergency Management Institute

U.S. DEPARTMENT OF HOMELAND SECURITY

FEMA

Resource Center Home Help

ICS Resource Center

Resource Center Contents

- **ICS Review Document**  
A summary of key features and principles.
- **ICS Training Materials and Opportunities**  
Access to related training materials and independent-study courses.
- **ICS Job Aids**  
Printable job aids related to ICS positions and activities.
- **ICS Forms**  
Printable versions of standard ICS forms.
- **ICS Position Checklists**  
Printable checklists of ICS roles and responsibilities.
- **Glossary of Related Terms**  
Alphabetical list of terms and acronyms, with definitions.
- **Reference Documents**  
Printable versions of relevant reference documents.
- **Links**  
A list of applicable resource documents and web sites.

<http://www.training.fema.gov/emiweb/IS/ICSResource>



FEMA

Visual 1.118  
Course Overview

# Taking the Exam



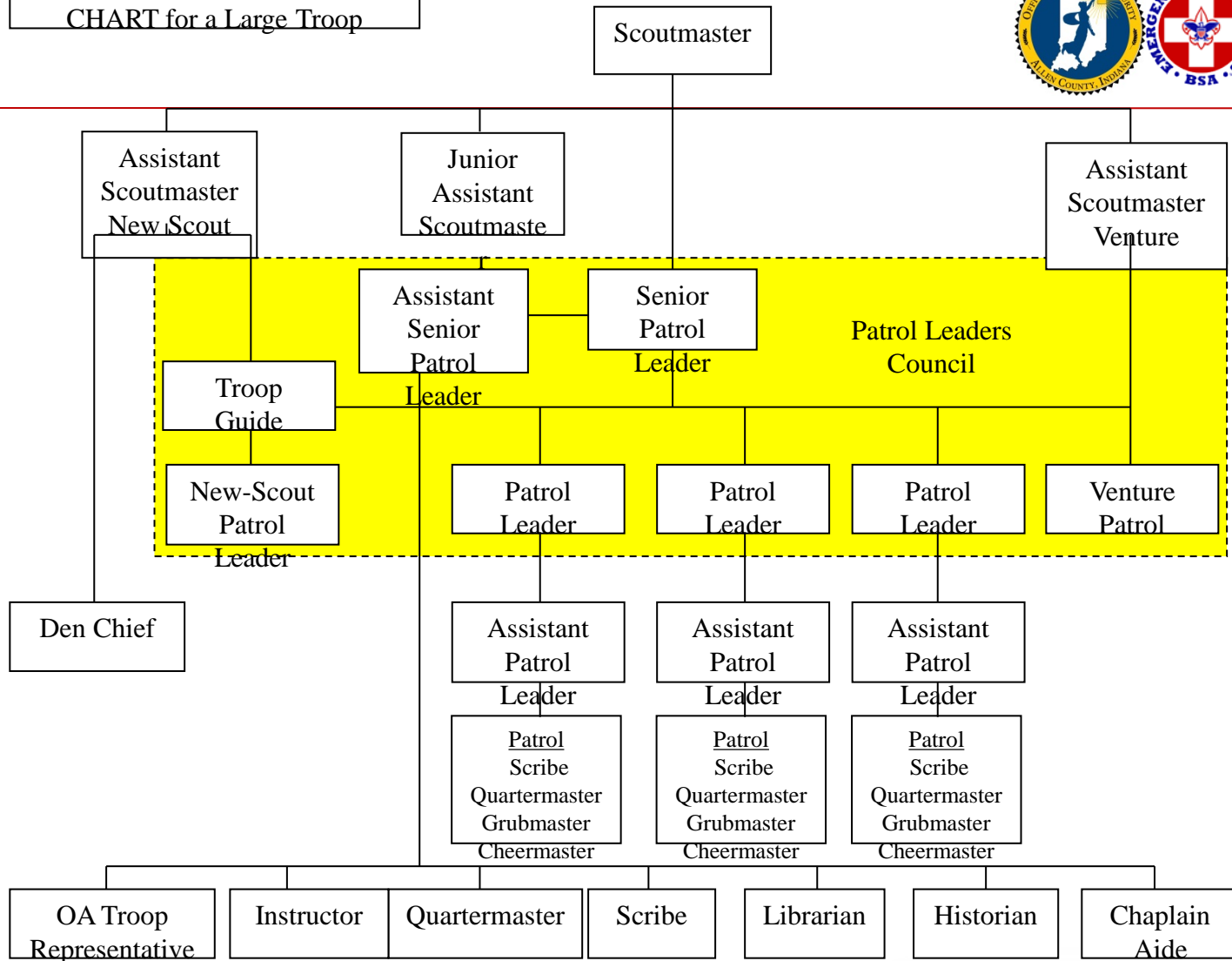
## Instructions:

1. Logon to FEMA's Independent Study Program and select the IS100.b. course; or  
<http://training.fema.gov/EMIWeb/IS/courseOverview.aspx?code=IS-100.b>
2. Select "Take Final Exam Online"
3. Acknowledge that "I agree that completion of this examination will be an individual effort." then select "continue"
4. Carefully select your answers, then follow the prompts and provide the requested information.
5. Once you have submitted your test, you will receive a reply email with a link to your certificate (if you passed).



**FEMA**

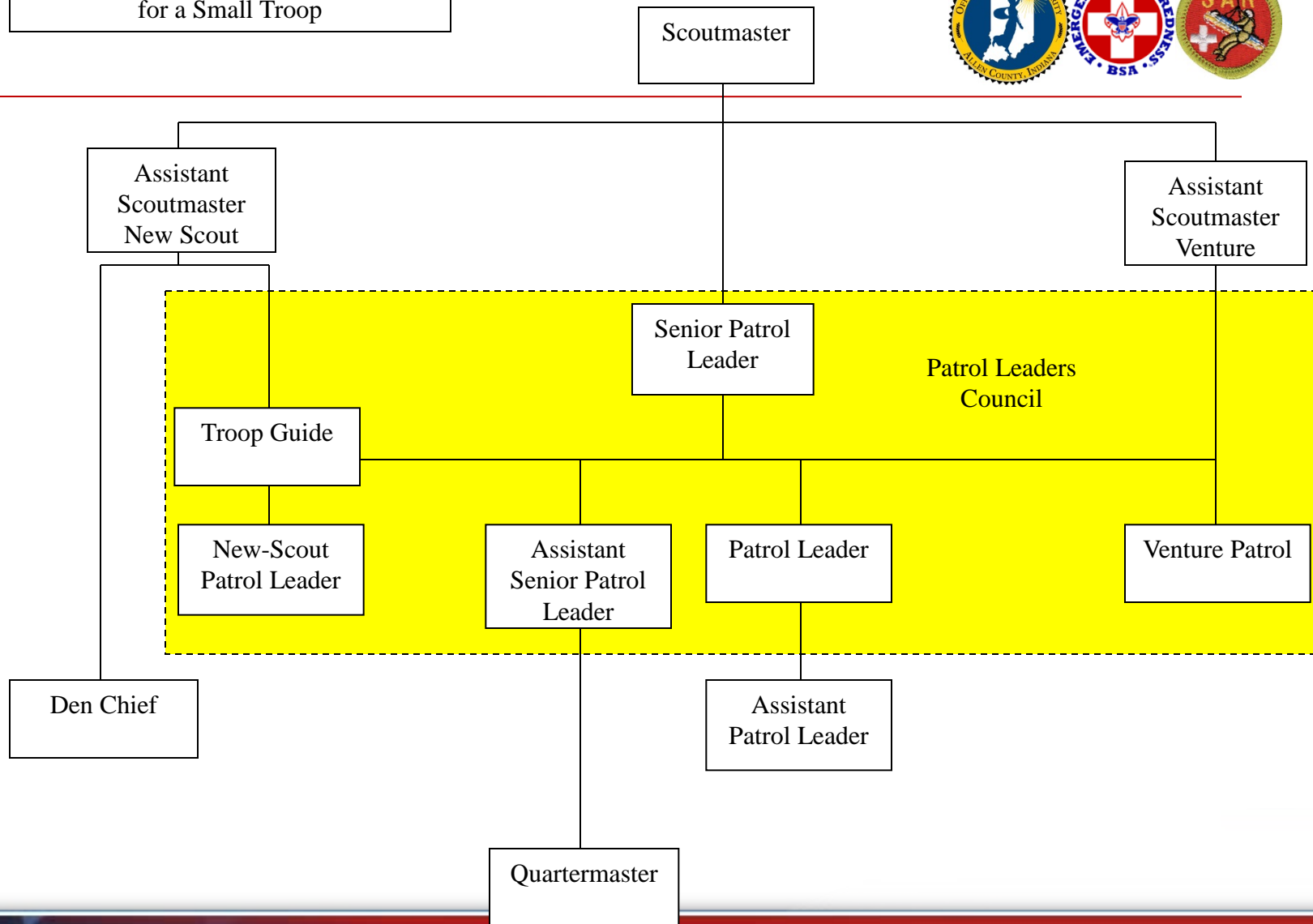
# TROOP ORGANIZATION CHART for a Large Troop



FEMA

Visual 1.120  
Course Overview

# TROOP ORGANIZATION CHART for a Small Troop



FEMA

Visual 1.121  
Course Overview