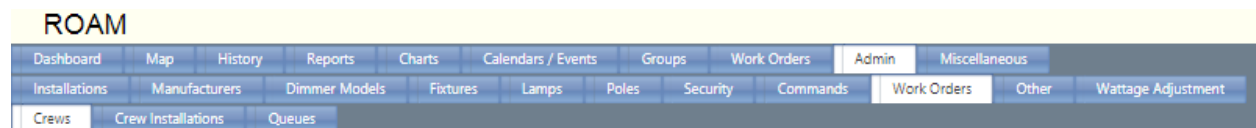


## How to Program a Mesa Tablet for a Concierge/Enterprise Site

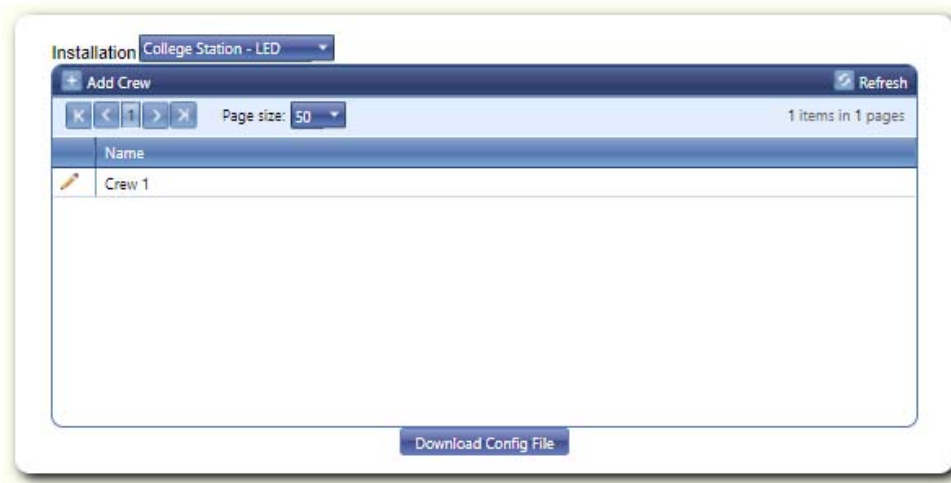
The steps outlined in this guide should be used for pairing a Mesa handheld tablet with a ROAM Concierge, or Enterprise installation. These steps will be the same for both software platforms. Mesa tablets need to be paired with an installation so they can be used to activate new ROAM nodes and gateways, perform device swaps, and manage work orders. Mesa tablets will not be paired with a particular ROAM installation from the factory, so without following these steps, the Mesa tablet will not be usable.

### 1. Apply Configuration File to the Mesa

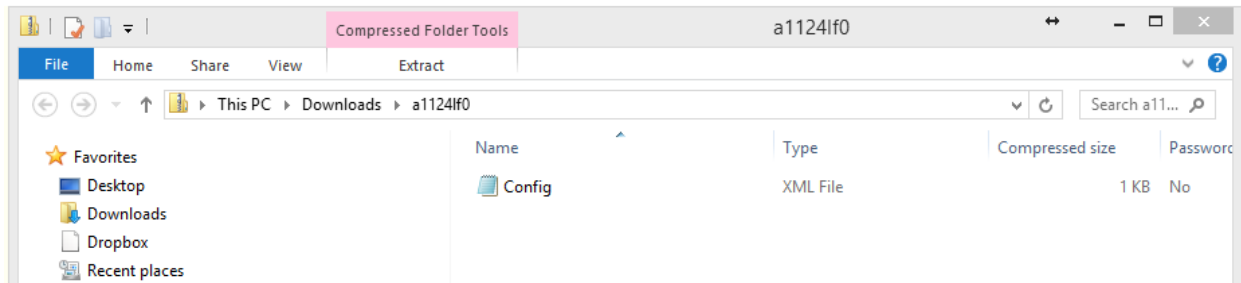
For each installation, there is a configuration file that is unique for that particular site, and this file must be uploaded to the Mesa handheld to properly pair it. This file has information that will allow the Mesa to know where to pull data from, and where to send it to. The first step will be to create a crew in the portal. The “crew” will be the presumed user of the Mesa out in the field. Multiple crews can be set up in the portal, but there needs to be at least one in order to continue setting up the Mesa. To create a crew, navigate to the “Crews” tab as pictured below.



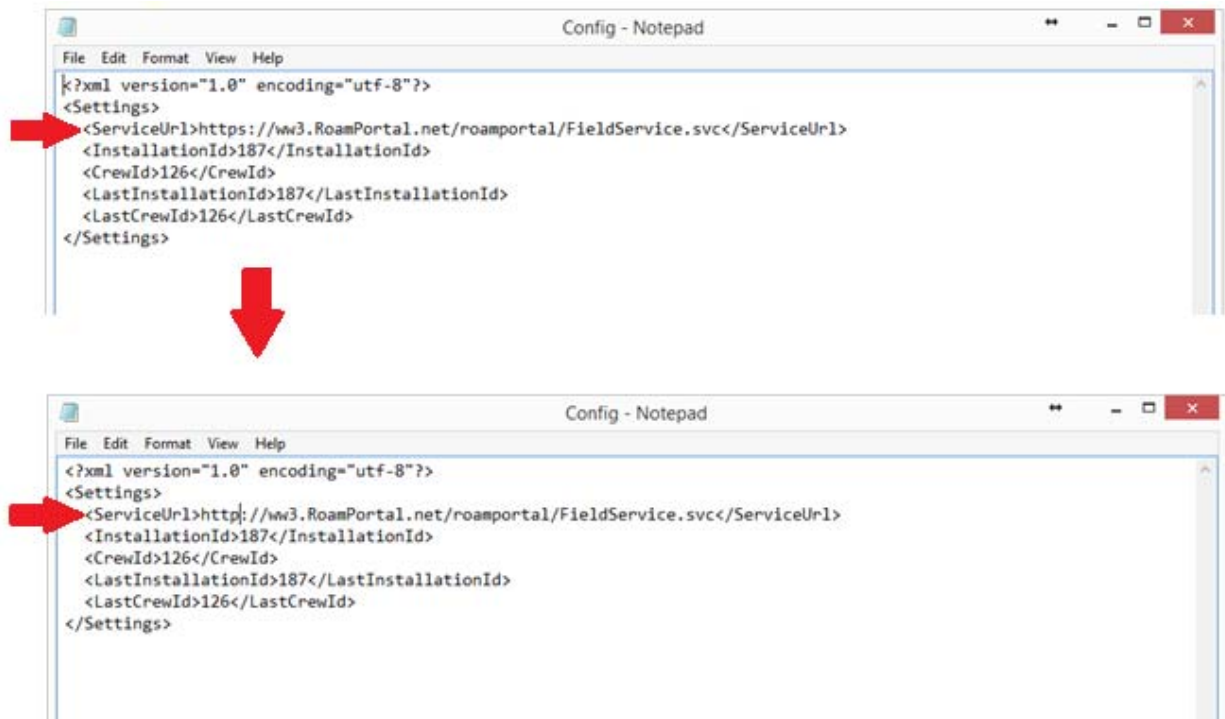
Then, select the “+” button to create a new crew. Once a crew name is chosen, click “Add”, and it will show up on the list of crews.



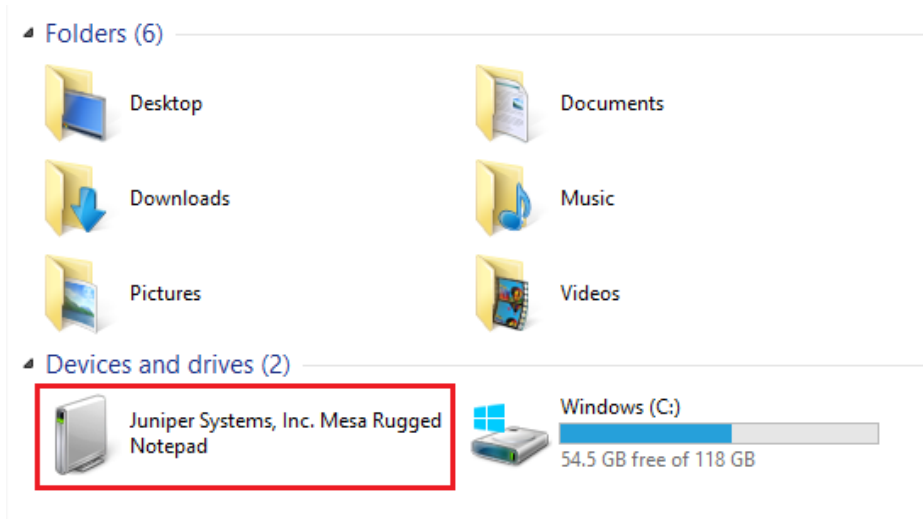
After the crew has been set up, the config file can then be downloaded from the portal. From the same tab, click the “Download Config File”. A compressed folder will download, the contents of which will have a “config.xml” file.



Save this file to an alternate location, such as the desktop. One minor change will need to be made to the file before it can be copied onto the Mesa. Open the config file using a simple text editor (such as notepad), and adjust the URL by removing the “s” in “https”.



To apply this config file to the Mesa, the USB tether will be needed. Plug the Mesa into the computer so that the Mesa shows up on the computer's file tree, as pictured below. It may take several minutes for the computer to recognize the Mesa. If is the first time the Mesa has connected to this particular computer, then it will need to install the proper driver before it shows up. After several minutes the Mesa has not shown up automatically, then download the program **Windows Mobile Device Center** which can found on the internet. This program will assist making the proper connection.

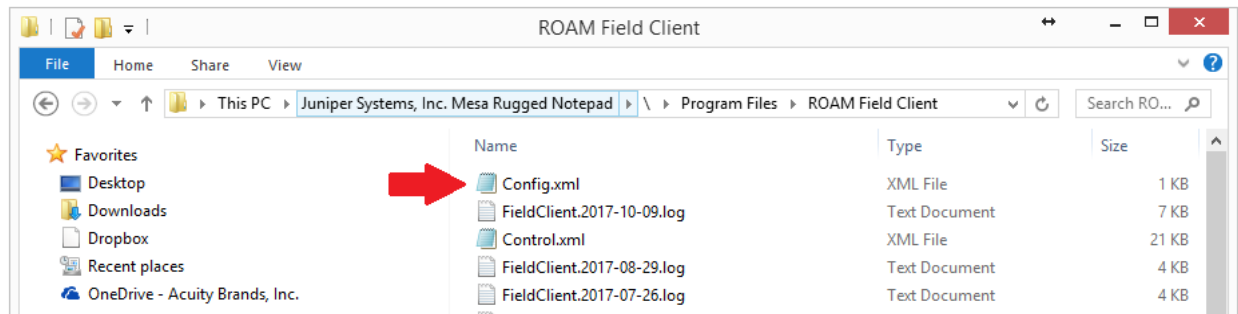


If using the **Windows Mobile Device Center**, the screen below indicates the devices is connected to the computer.



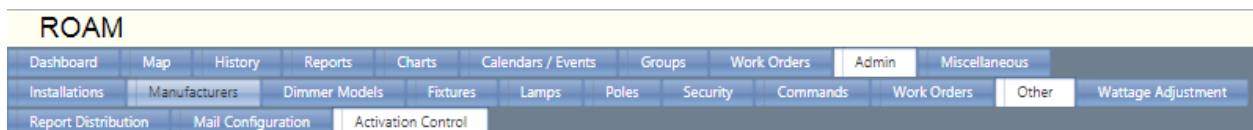
After connecting the Mesa, the contents can be accessed from the computer's file tree, similar to any other folder. Save the config file to the following location:

“Juniper Systems, Inc. Mesa Rugged Notepad > \ > Program Files > ROAM Field Client”



## 2. Setting Activation Control Options

Activation control options are the specific attributes that will show up on the Mesa that the user would like to be inputted during the device activation process that will occur out in the field. Those attributes will be available from the Mesa for the installer to select, and then later they will be visible in the ROAM portal. Fields such as Fixture, Lamp, and Pole all have various attributes. These attributes can be set as required or optional. If required, the installer will not be able to activate the device without inputting data, if optional, the field can still be available, but not necessary to save the activation. To set these, navigate to the following tab in the portal:



From the “Activation Control” tab, a table with all the fields will be available. Under the tab for each field, the list of attributes will be visible, and editable. From here, the attributes can be set as visible, required, and if they can be same as last.

“Visible” means that the attribute will be visible to the installer for data input. If the attribute is not necessary, this box can be unchecked so it will not show up. “Required” means that the attribute is not only visible, but needed in order to save the activation. If an attribute is visible, but not required, then the installer has the option to input data or leave blank. “Can Be Same As Last” means that the attribute will default to the entry saved on the previous activation. Attributes such as voltage, and lamp type can be consistent throughout an installation, and by selecting this box, the previous selection will already be selected, preventing the installer from having to input the same data for each activation. There is a set of default settings, and those can be chosen by selecting the “Copy from default” button under each field’s tab. The settings can be fine-tuned still after that point.

The screenshot shows a software interface for configuring an installation. At the top, there's a dropdown menu set to 'College Station - LED'. Below it are several tabs: 'Header', 'Fixture', 'Lamp', 'Pole', 'StreetLight', and 'Dimmer'. The 'Header' tab is active, displaying a table with the following data:

	Field	Is Visible	Is Required	Can Be Same As Last
	Device Type	<input type="checkbox"/>	<input type="checkbox"/>	<input checked="" type="checkbox"/>
	Location	<input checked="" type="checkbox"/>	<input checked="" type="checkbox"/>	<input checked="" type="checkbox"/>
	House Number	<input type="checkbox"/>	<input type="checkbox"/>	<input checked="" type="checkbox"/>
	Street	<input type="checkbox"/>	<input type="checkbox"/>	<input checked="" type="checkbox"/>
	City	<input type="checkbox"/>	<input type="checkbox"/>	<input checked="" type="checkbox"/>
	Zip	<input type="checkbox"/>	<input type="checkbox"/>	<input checked="" type="checkbox"/>

Below the table is a button labeled 'Copy from default'.

### 3. Uploading Activation Control Options to Mesa

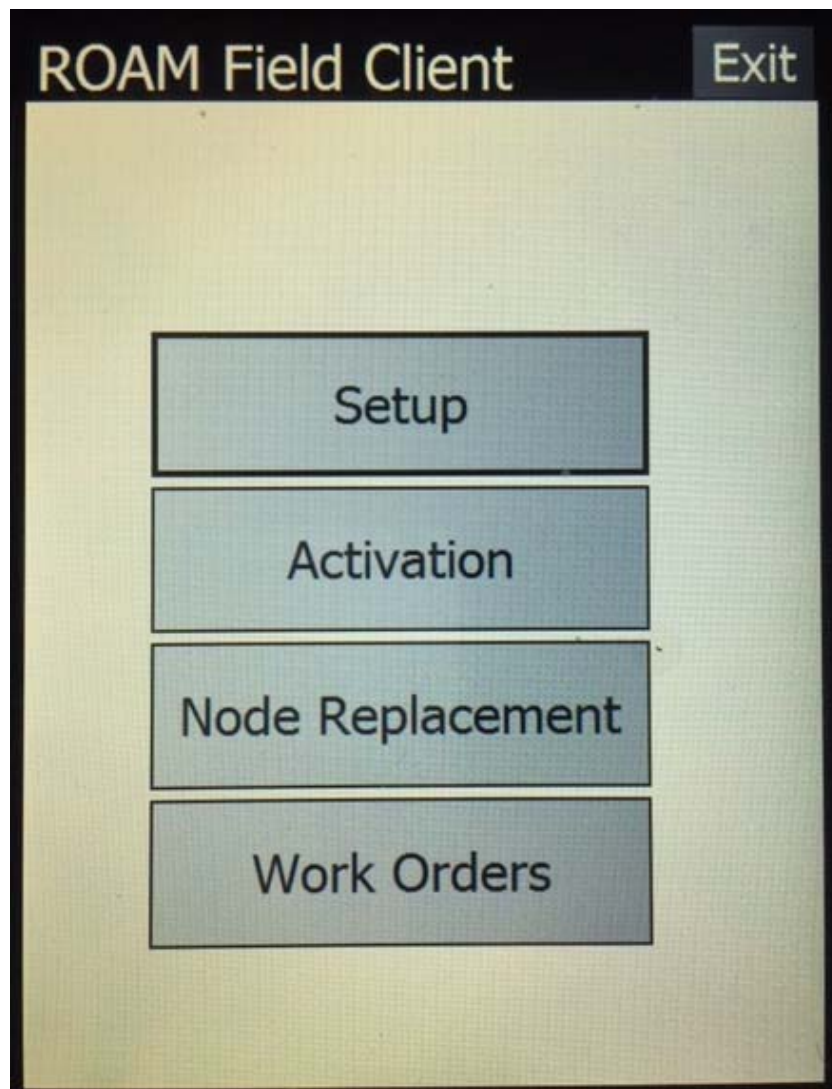
After the Mesa has been properly configured for the user’s ROAM installation, and the desired activation options have been selected in the ROAM portal, the controls will then need to be uploaded to the Mesa. This will allow the information chosen from the previous step to be available to the installer out in the field.

The Mesa will need to be given an internet connection. This can be done one of two ways. First, the Mesa can connect to the internet using the USB tether. Simply plug the Mesa into a computer with an active internet connection. The Mesas also have a WiFi card, thus enabling it to connect to a wireless network. Network credentials may be needed for this step.

After connecting the Mesa to the internet, open the ROAM Field Client by selecting the icon below:



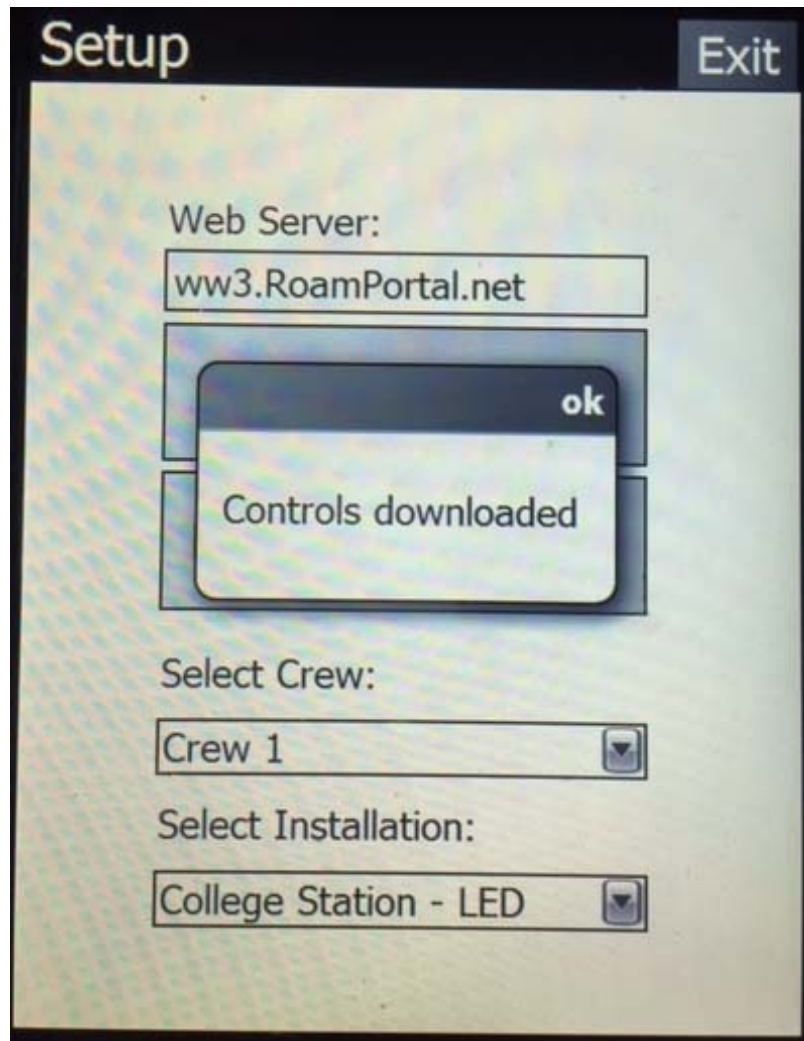
When the program opens, select the "Setup" button.



From the Setup menu, first verify that the Mesa has a proper internet connection. To ensure the Mesa can connection to the ROAM server, select the “Test Web Server” button. If the Mesa has a connection to the ROAM server, a notification will pop up saying “The server responded”.



The final step will be to download the controls to the Mesa. Select the button "Download Controls". If they download successfully, a notification will pop up saying "Controls downloaded".



The Mesa has now been paired with the ROAM installation, and will be ready to use for activations, replacements, and work order management.