

QStart Mac

User Guide
Release version 1.1 (46)



Contents

Contents	2
Introduction	3
Getting started	4
Install the QStart for Mac software	4
Licensing considerations	4
Scripts	5
Main menu options and actions	6
File, Edit and Format menus	6
Window and Help menus	12
Control key guide	14
Scroll controllers	13
Making the most of your QStart for Mac software	17
If you need to contact Autocue or QTV	18

Introduction

Mac specific behaviour

Unlike other Autocue products running on Windows platforms, the QStart for Mac application requires a restart in order for any altered [preferences](#) to be applied. For example, if you disable the prompt monitor within the Preferences menu, it will still appear when you next prompt. It will only be disabled when you restart the QStart for Mac application.

Getting started

Install the QStart for Mac software

QStart for Mac is currently distributed as a DMG file (*.dmg) via Autocue USB flash drive or digital distribution.



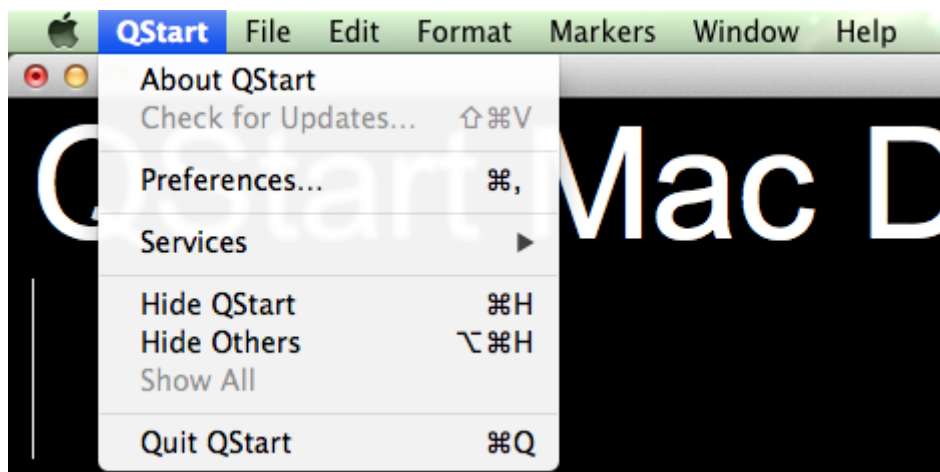
Double-click on the QStart_Mac_v1.1_b46.dmg file to open it, agree to QStart License. New Window appears on your desktop



To install, drag QStart into your Applications folder.

Open Application folder and click on the icon to launch QStart for Mac.

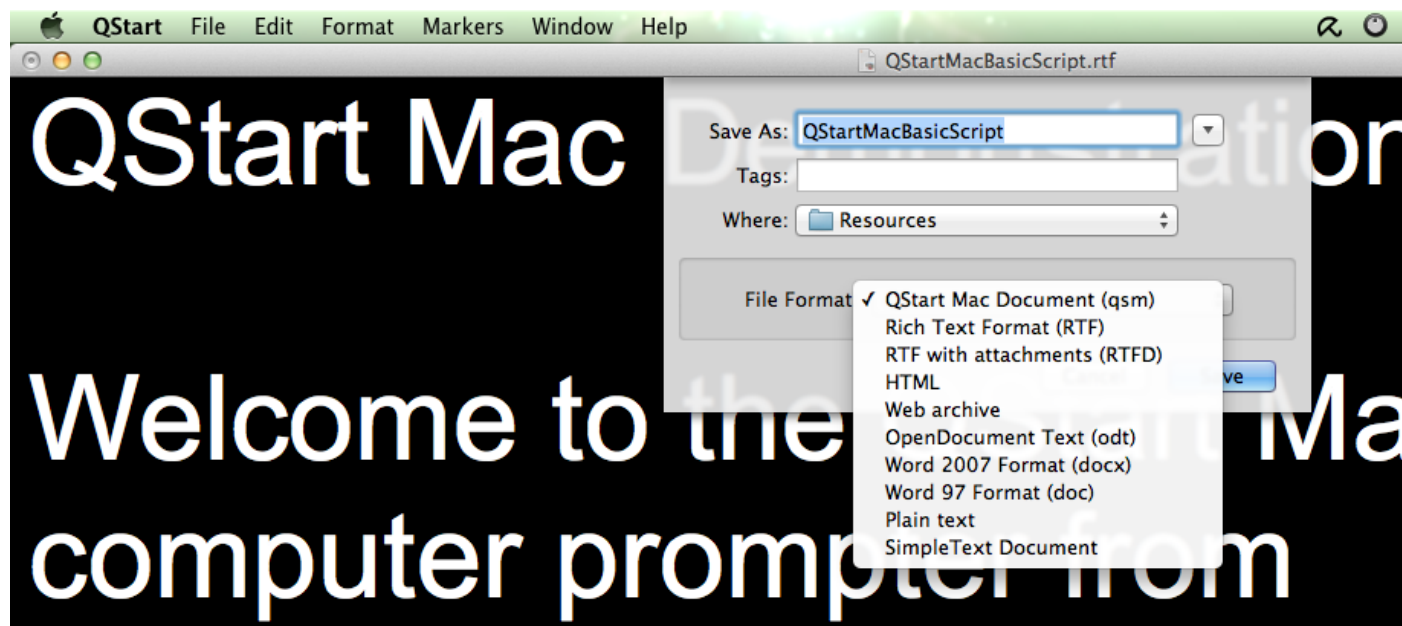
The Menu options and GUI are described in details in a later section of this document.



Scripts

QStart for Mac uses a specific file format that stores not only the script text but also marker, size and formatting data.

The file suffix for QStart for Mac files is **.qms**. This is short for **QStart Mac Script**.

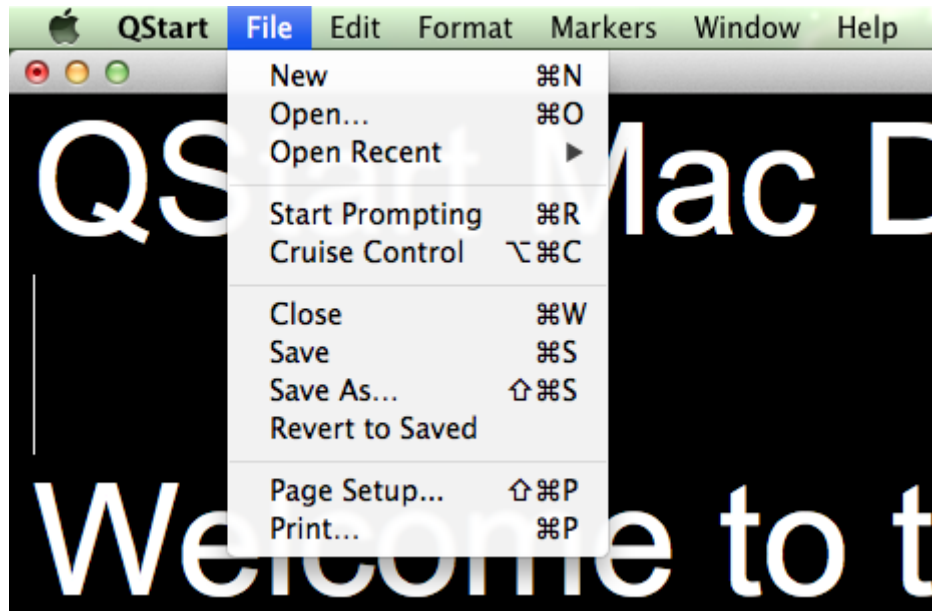


Main menu options and actions

File, Edit and Format menus

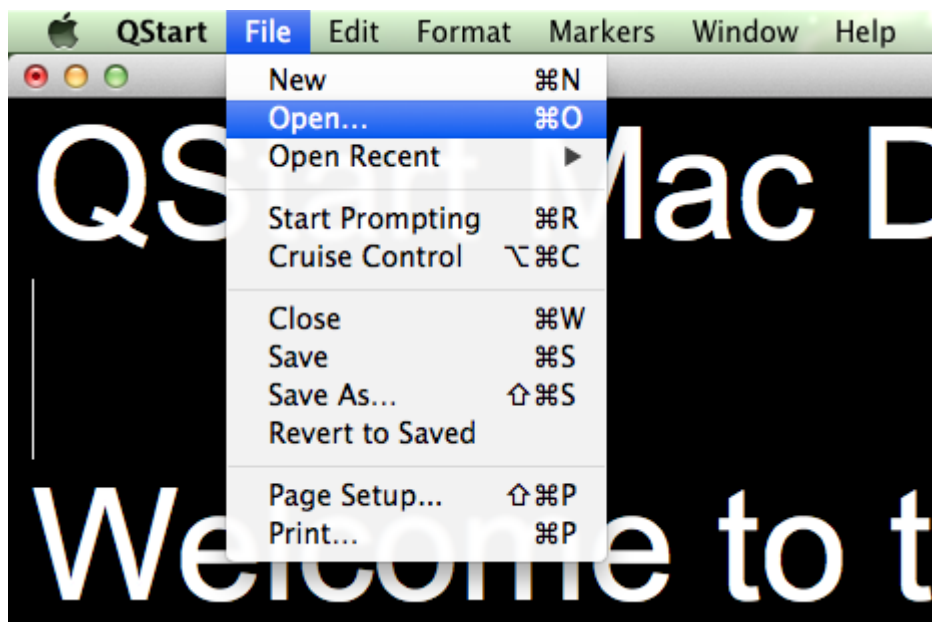
Creating new scripts, opening existing scripts and saving edited scripts is done from the [File menu](#). Other actions are also available.

File menu

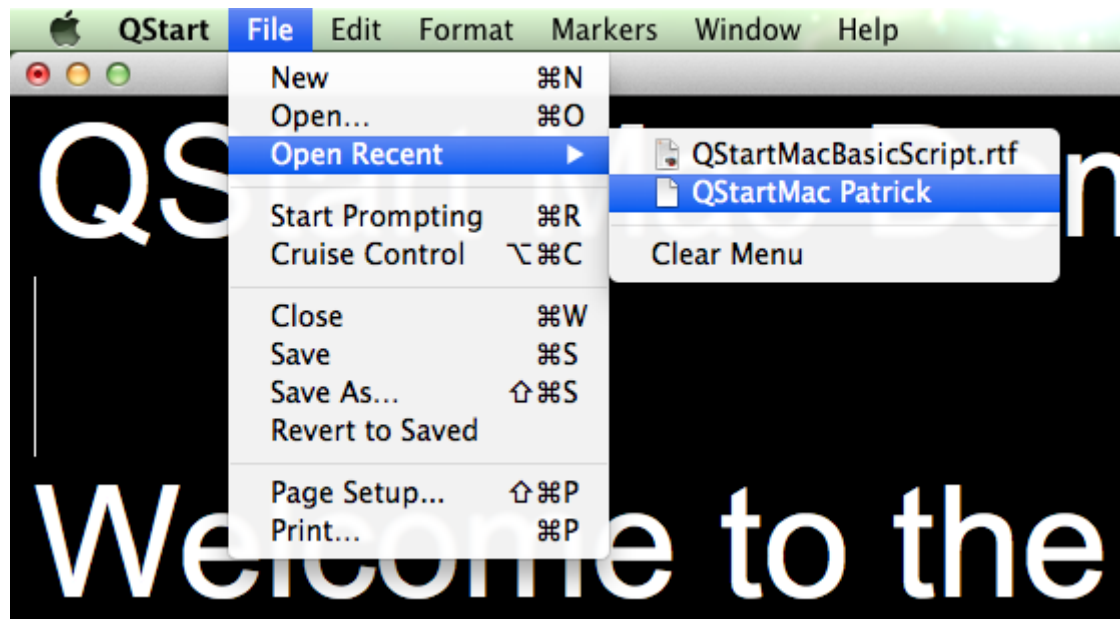


New ⌘N – Start a new script. A blank script is opened automatically if this option is selected. If text is entered within this script you will be prompted to save if you attempt to close it.

Open ⌘O – Open an existing script from a specific location using the file browser dialogue that appears.



Open Recent – A list of recent files. This allows the user to quickly recall a file that has been worked on previously.



Start Prompting – Begins prompting ⌘R

Cruise Control – Enabling this option causes the prompt output to continue scrolling at the last set speed on the scroll-control ⇧⌘R.

Close – Close the script that is currently open ⌘W

Save – Save changes to the script that is currently open ⌘S

Save As – Save changes to the script but save as a new filename ⇧⌘S

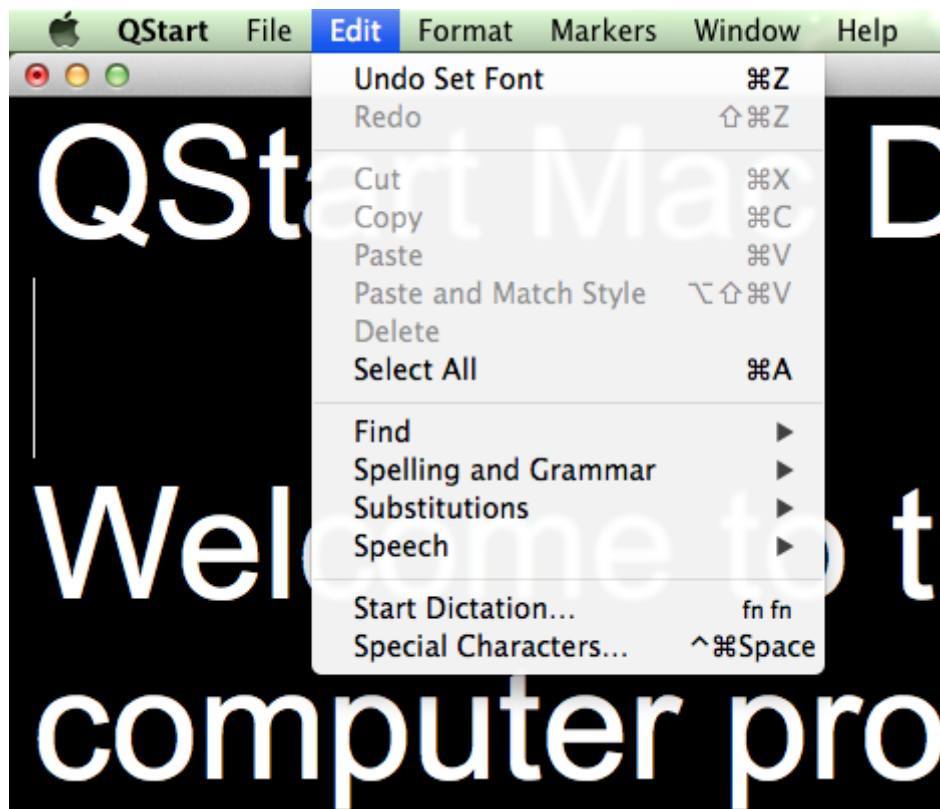
Revert To Saved – Re-open the last saved instance of the script.

NOTE: Performing this action **will** destroy all changes to the currently open script.

Page Setup – Configure printing preferences ⇧⌘P

Print – Send script to chosen printer ⌘P

Edit menu



Undo Set Font - Erases the last change done to the document reverting it to an older state ⌘Z

Redo - Reverses the effects of the undo action ⇧⌘Z

Cut - Extract sections from each line of input ⌘X

Copy - Copy the highlighted selection of text ⌘C

Paste - Paste the previously copied text ⌘V

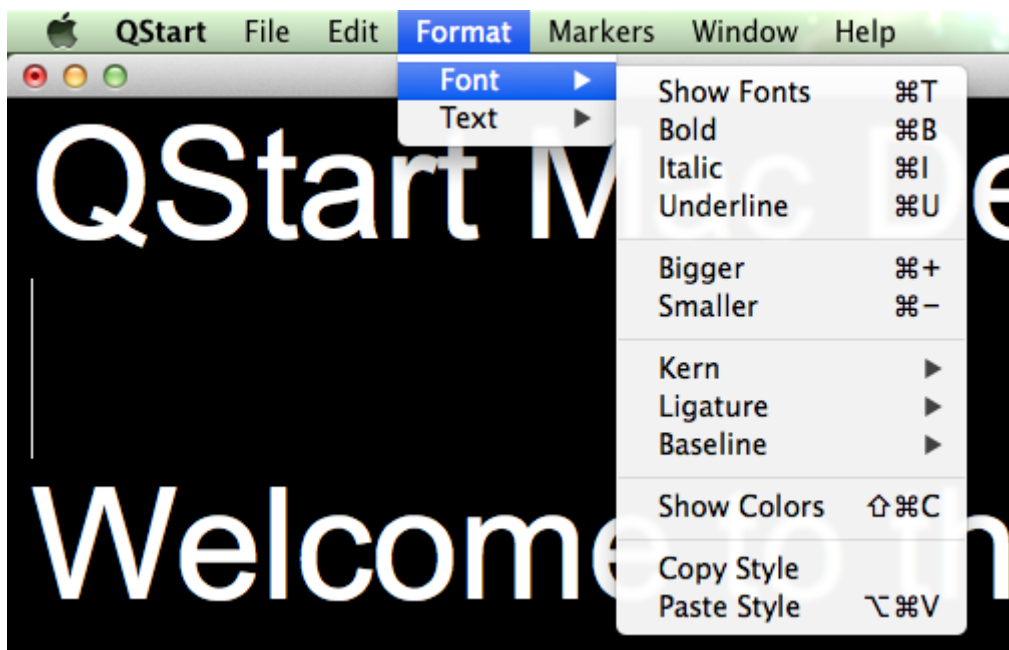
Paste and Match Style - Allows pasting of text from richly formatted sources whilst retaining their formatting ⇧⌘V

Delete - Delete the highlighted selection of text

Select All - Select all the data within the script ⌘A

Format menus

Font Submenu:



Bigger - Increase the size of the currently selected text by one point ⌘+

Smaller - Decrease the size of the currently selected text by one point ⌘-

Kern - Contains menu items to adjust the spacing between letters in text

Use Default - Return text to the default kern setting (no spacing adjustment)

Use None - Use no kerning

Tighten - Move letters closer together

Loosen - Move letters farther apart

Font Ligature - Display two or more letters as a unit

Use Default - Use the most common ligatures, in the current font, to be used

Use None - Use no ligature

Use All - All available ligatures, in the current font, to be used

Baseline - Contains menu items to adjust the vertical placement of text

Use Default - Return text to the default baseline setting (no vertical adjustment)

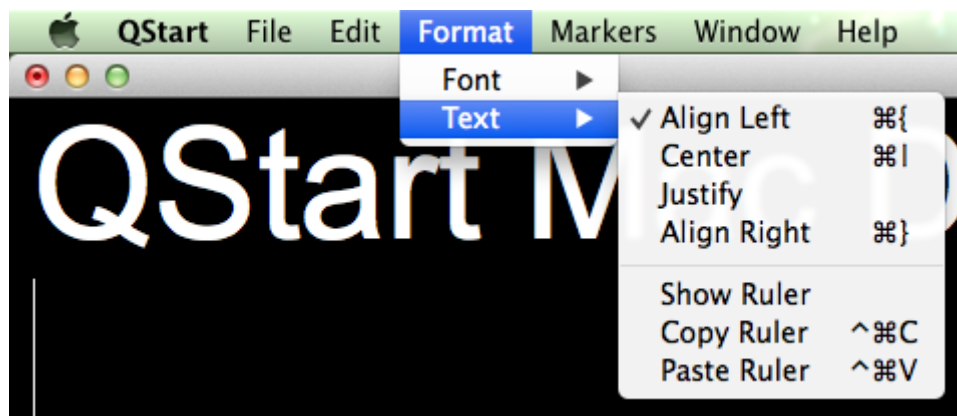
Superscript - Apply superscript formatting to the selected text

Subscript - Apply subscript formatting to the selected text

Raise - Raise the currently selected text above the height of other text on the same line

Lower - Lower the currently selected text below the height of other text on the same line

Text Submenu:



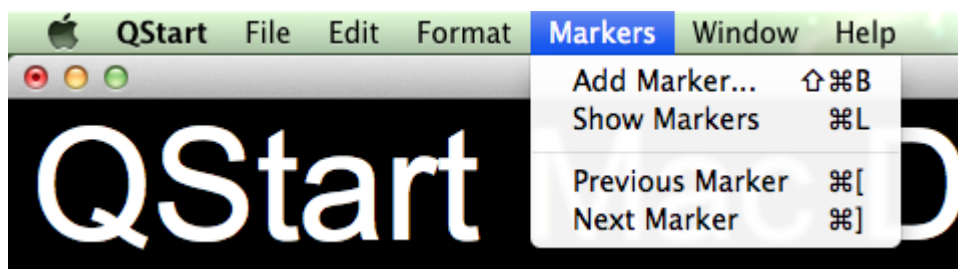
Align Left – Move text to the left most position within its text box ⌘{

Center - Center the currently selected text within its text box ⌘|

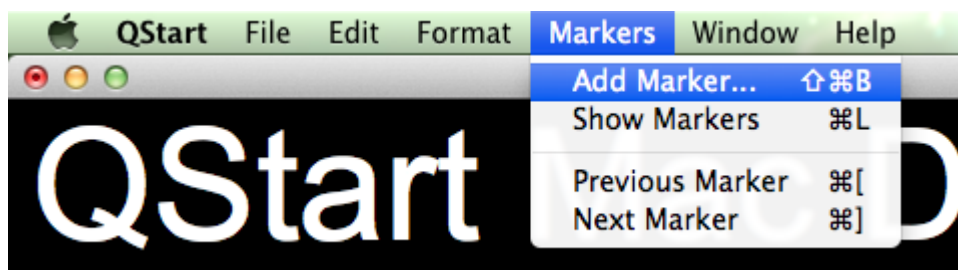
Justify - Align text flush with left and right margins

Align Right – Move text to the right most position within the text box ⌘}

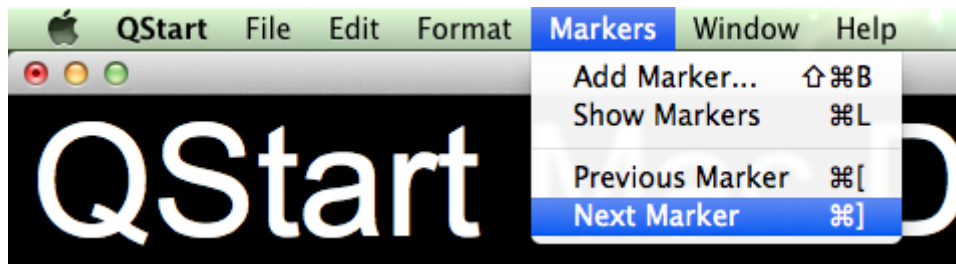
Markers menu



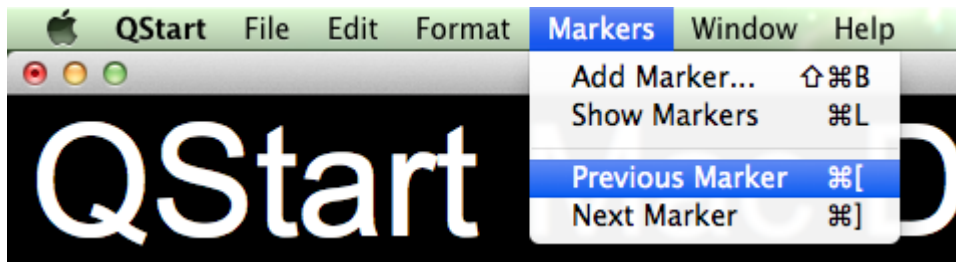
Add Marker – Whilst you are in the script editor press Shift + Command + B key to add new marker ⇧⌘B



Next Marker - Whilst in prompting mode press Command +] key to jump to the next marker ⌘]

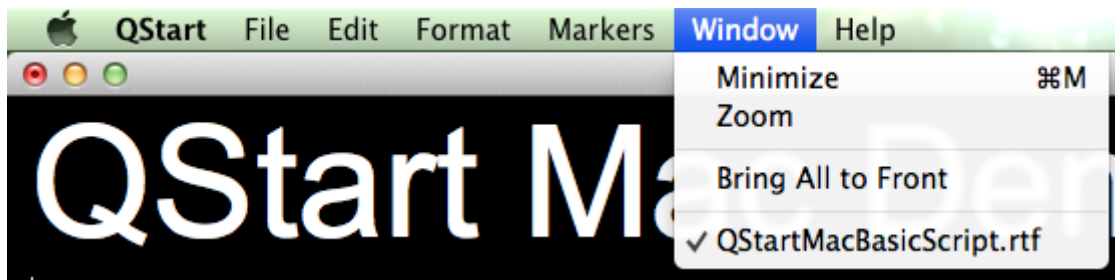


Previous Marker - Whilst in prompting mode press Command + [key to jump to the previous marker ⌘[



Window and Help menus

Window menu:



Minimize - Minimizes the window to the right side of the Dock and will show up as a very small window ⌘M

Zoom - Toggles window between two states, the standard state and the user state. The standard state is determined by the application developer.

Bring All to Front - Brings a window to the front ahead of other application windows.

Help menu:



A full description of all the options that are available will be found within the Help menu, allowing search of specific topics if required.

Control key guide

Mouse and keyboard control can both be enabled (see [QStart Preferences](#)).

Whilst in the script editor:

Command key + R	Start Prompting ⌘R
Command key + A	Select all text ⌘A
Command key + +key	Increases font size (when text is selected) ⌘+
Command key + - key	Decrease Font size (when text is selected) ⌘-

Whilst prompting:

Command key + R	Stop Prompting / Exit from prompting mode ⌘R
Esc key	Stop Prompting / Exit from prompting mode ESC
Up arrow	Increase scroll speed
Down arrow	Decrease scroll speed
Left arrow	Reverse scroll direction (revers CueMarker)
Right arrow	Stop scroll (press again to resume)

Mouse control:

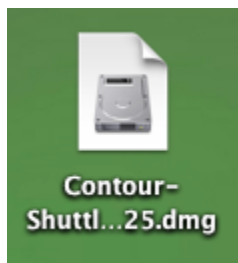
Mouse forward	Increase scroll speed
Mouse back	Decrease scroll speed
Mouse click	Reverse scroll direction (revers CueMarker)

Scroll controllers

Keyboard and mouse/touch pad are supported for basic control of the prompt output.

Scroll Control Shuttle Express – To use this device, you will need to install Contour Shuttle app from Contour Designs CD Disc supplied with ShuttleXpress or from QStart DMG file located on the Autocue USB Disc.

When QStart DMG file used, Contour Shuttle app is located in the ShuttleXpress subfolder. Please copy Contour-Shuttle-30-b25.dmg file onto desktop. Now you should be able to install Contour Shuttle app.



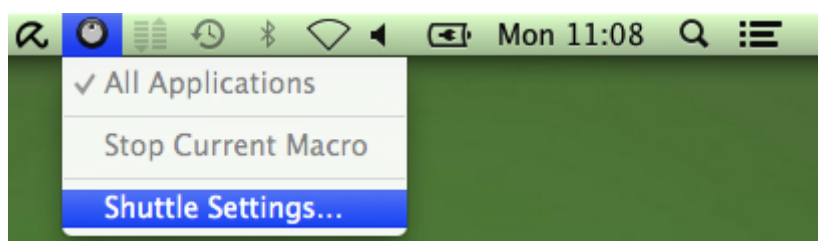
Double-click on it, to open.



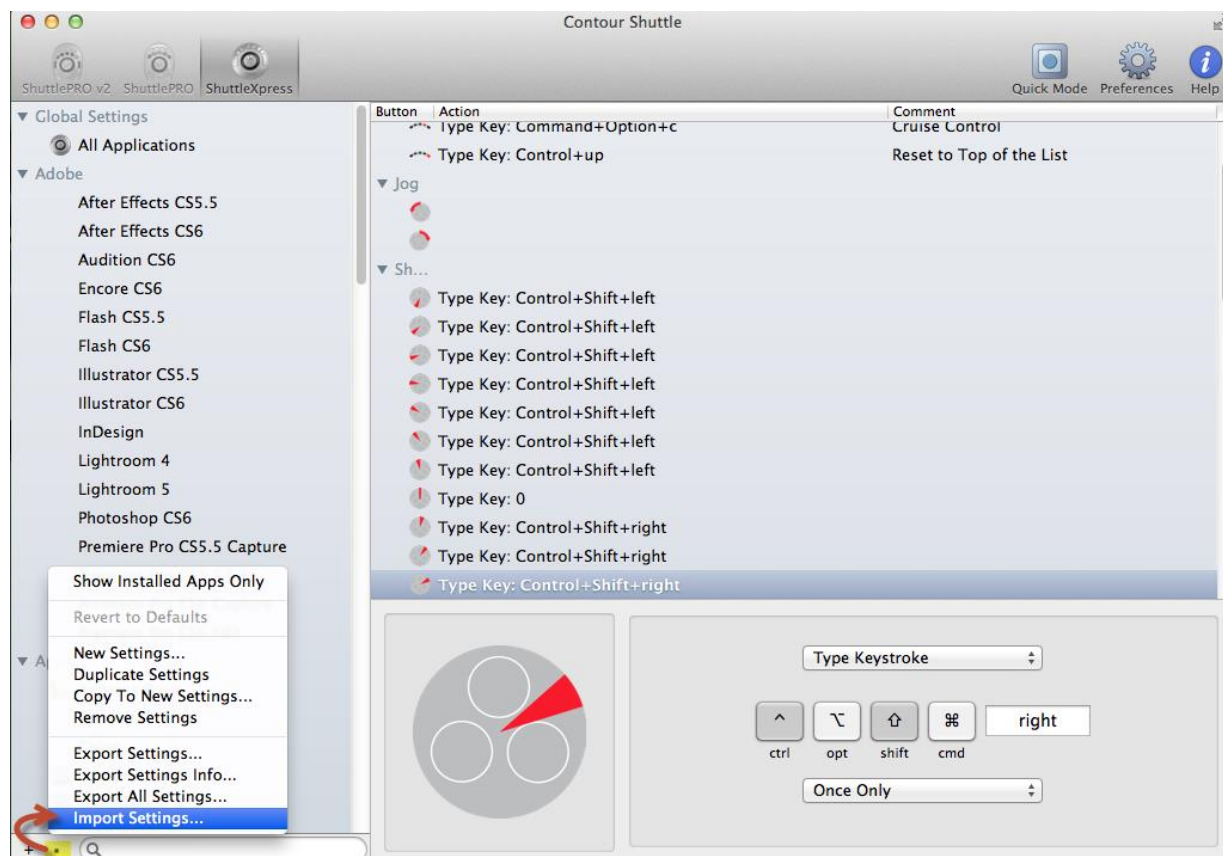
Inside Contour Shuttle DMG file, double-click on Contour Shuttle to perform installation.

As last step you will need to copy a template QStartShuttleXpressSettings.shuttleSettings form QStart DMG file subfolder ShuttleXpress onto Desktop.

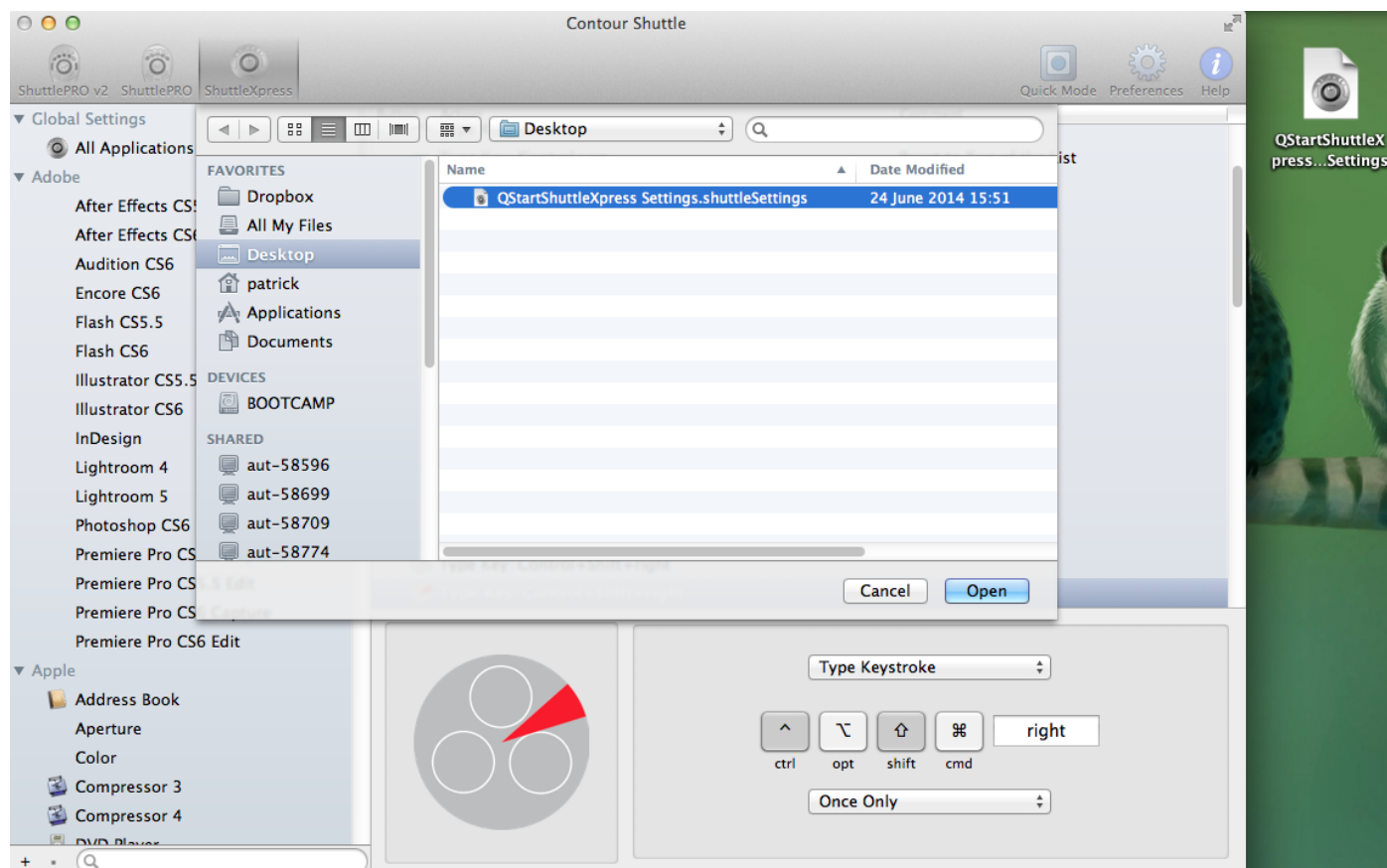
1 – After installing Contour Shuttle app from the Contour Designs CD or Autocue DMG file, go to the Shuttle Settings:



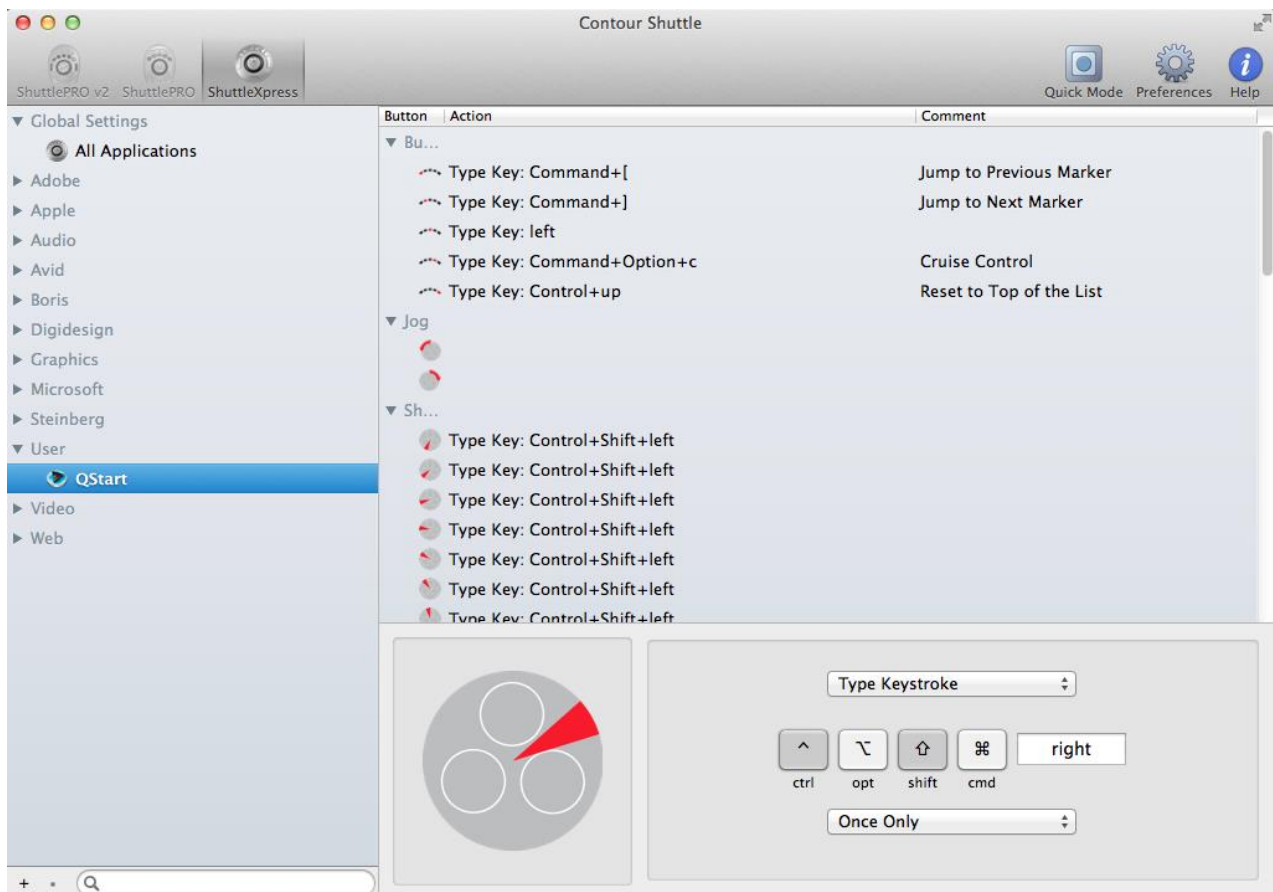
2 - Within the Contour Shuttle Control Panel choose 'dot' icon and then select 'Import Settings' option:



3 - Navigate to the Desktop and choose the QStartShuttleXpressSettings.shuttleSettings template file (which was copy to Desktop from QStart_Mac_v1.1_b46.dmg file) and press 'Open' button:



4 – The settings for QStart should have been imported successfully and you can now use the ShuttleExpress with QStart Mac app.



Monitor configuration

In order to prompt out successfully, you will need to output prompting image to an external monitor. It is likely (if you have a modern Apple Mac device) that you will need to purchase the Apple [Mini DisplayPort to VGA adapter](#). This will enable you to connect your Apple device to a VGA cable allowing you to connect to the external monitor.

To connect to the external monitor, connect the Mini DisplayPort VGA adapter to the [Mini DisplayPort](#) in your MacBook Pro and then connect a VGA cable between the Mini DisplayPort adapter and the VGA monitor.



Mini DisplayPort VGA adapter



Mini DisplayPort in MacBook Pro

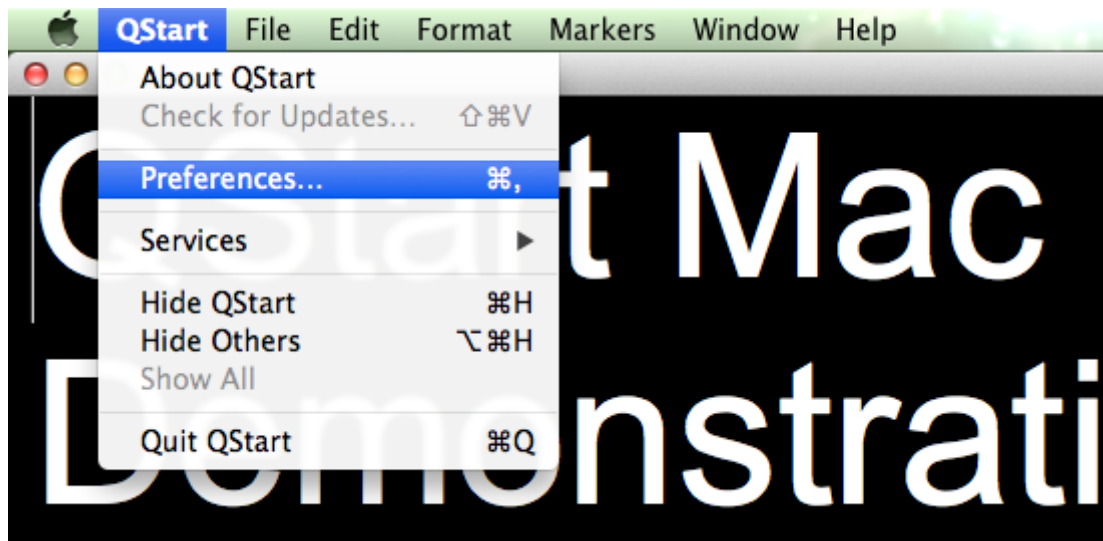
When an external monitor is connected and powered on, OSX will discover the monitor and automatically extend the desktop.

Next step is to setup the display settings for the secondary monitor in the Preferences menu option.

To see the image correctly in the mirror (if using an on camera unit) we need to change the [Prompt output](#) to [Reversed](#) (Revers text vertically for use with an On Camera). The option is found within the [Basic](#) tab within [Preferences](#).

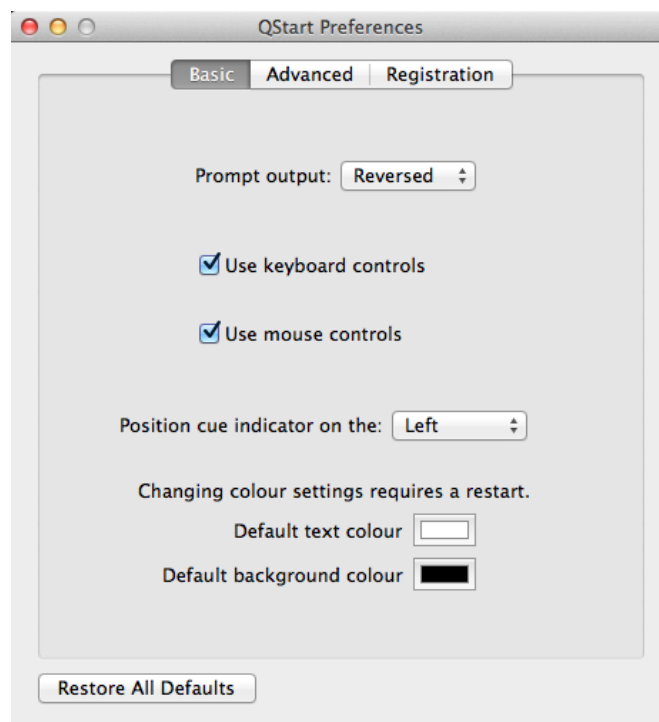
Making the most of your QStart for Mac software

To access these settings, go to the QStart menu and select Preferences.



In this section the available preferences are explained, along with any notes on behaviour:

Basic settings:



Prompt output options:

Normal – Standard text orientation.

Flipped – Flip text vertically.

Reversed – Reverse position of text and Cue Marker, for use with an On Camera Unit.

Scroll Controllers:

You can define which scroll control you wish to use within this section. Please see the Scroll Controls section on Page 12 for instructions upon installing and configuring the **Shuttle Express** scroll control.

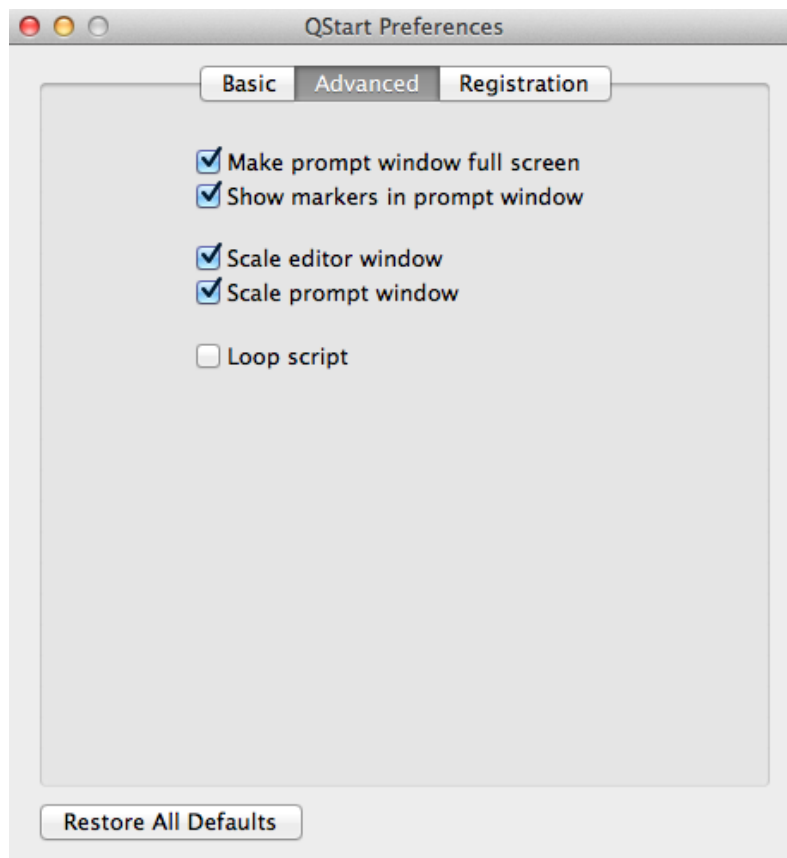
Cue Marker Position:

You can define the position (left hand side, or right hand side) of the Cue Marker.

Text and Background Colour:

This option allows the changing of the colour of the background and of the text (default colour is black background with white text) to a colour scheme that will suit the requirements of the operator.

Advanced settings:



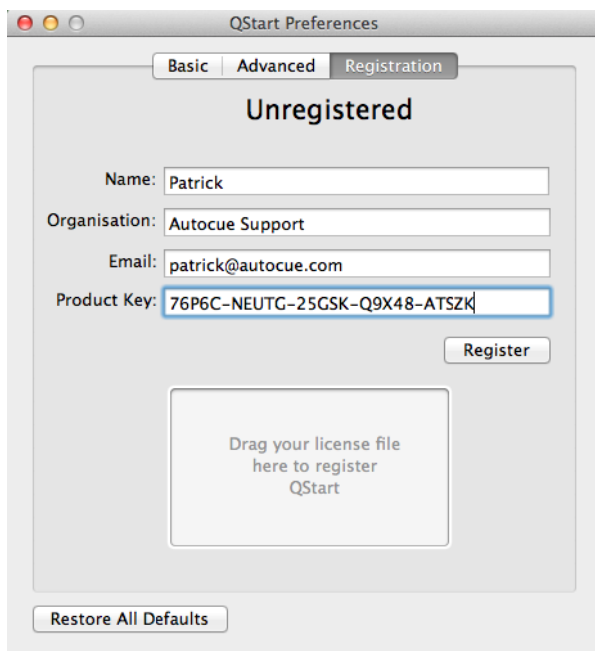
Make prompt window full screen – Display the prompt text in Full screen on the external monitor (SSP teleprompter).

Show markers in prompt window – Show the markers in the prompt output.

Scale editor window – Display the same size of fonts within the prompt output akin to the fonts in the editor window.

Loop script – Endlessly loop the script

Registration settings:



The image shows the 'QStart Preferences' window with the 'Registration' tab selected. The window title is 'QStart Preferences'. At the top, there are three tabs: 'Basic', 'Advanced', and 'Registration'. The main area is titled 'Unregistered'. It contains four text input fields: 'Name' (filled with 'Patrick'), 'Organisation' (filled with 'Autocue Support'), 'Email' (filled with 'patrick@autocue.com'), and 'Product Key' (filled with '76P6C-NEUTG-25GSK-Q9X48-ATSK'). Below these fields is a 'Register' button. At the bottom left is a 'Restore All Defaults' button. In the center, there is a large rectangular box with the text 'Drag your license file here to register QStart'.

Your QStart Product Key:

DG3JE-KD2VY-HDUDJ-1AX1N-28BXX

To register QStart app, in QStart Preferences -> Registration tab, type your Name, Organization, Email address and enter your unique Product Key, which you can find on Autocue Installation USB Flash Disc. Location: ROOT of the Autocue USB Flash drive, PDF file name: YOUR QSTART MAC INSTRUCTIONS.

If you don't have unique Product Key, please contact our Sales Team.

After filling all fields, press 'Register' button and in few second you see this information:



If you need to contact Autocue or QTV

Support

Our hardware and software support is provided by in-house teams of experienced and dedicated staff.

We provide free telephone support for prompting customers during UK office hours (9am till 6pm GMT) and US office hours (9am till 5pm EST). When contacting the technical support teams, please provide as much detail as possible.

Check the FAQ section of the web site to see if the answer you need has already been provided:

<http://www.autocue.com/service-support/faq>

Information we need

Whenever you make a support enquiry, the minimum information we will need is the name, version and build number of the software you are using.

If you cannot find the answer on the web site, contact the Technical Support team.

International	SoftwareSupport@autocue.com	+44 20 8665 2992
	HardwareSupport@autocue.com	+44 20 8665 2992
Americas	SoftwareSupport@qtv.com	+1 704 377 1496
	HardwareSupport@qtv.com	+1 212 929 7755

Sales

If you require additional or replacement equipment, contact the Autocue-QTV sales team.

International	sales@autocue.com	+44 20 8665 2992
America's	sales@qtv.com	+1 212 929 7755

Copyright information

©2003-2014 Autocue Group Ltd. All rights reserved. All information about Autocue software, hardware and accessories—including company and brand logos—contained in this guide is protected under international copyright conventions.

No part of this publication may be reproduced, stored in a retrieval system, or transmitted in any recording or otherwise, without prior permission of Autocue Group Ltd. All third-party software or hardware, including logos, referenced within this guide is copyright of the respective owners.

Disclaimer

Autocue Group Ltd reserves the right to revise this publication and to make changes in its content without obligation of Autocue Group Ltd to notify any person or persons of such revision.