

CLABSI REDUCTION in ONCOLOGY

Aim Statement

To reduce the incidence of CLABSI on the Oncology Unit by 20% from a baseline rate of 2.8 in 2015 to 2.26 by 12/2016

Target Condition for bathing is 75% of patients to be bathed daily from the 1/2016 baseline of 28% and 75% of neutropenic patients to be bathed with CHG

Background & Problem Overview

Variation in blood culture draw practice along with non-robust bathing process contributed to an increase in CLABSI on the Oncology Unit

- Blood culture draw practice:- Supplies in multiple locations. Staff knowledge deficit
- Bathing:- Practice not reinforced .CHG- not currently utilized for neutropenic patients

Interventions

Blood Culture Draw Process:

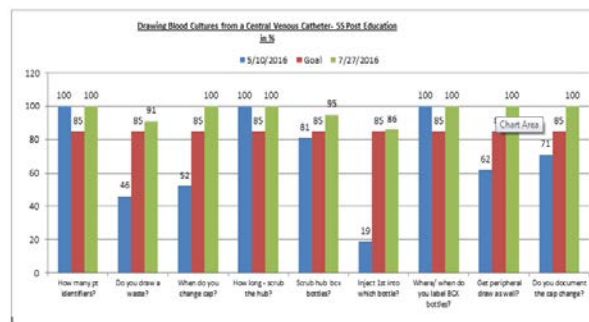
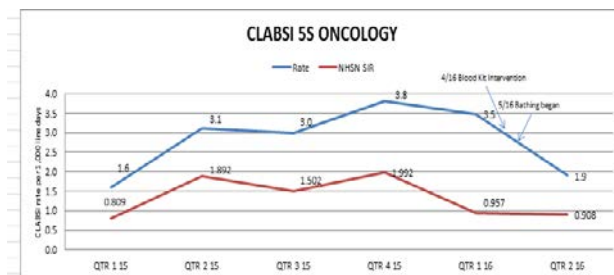
- Create supply kit with instructions and a checklist for blood culture specimen draw (S)
- Pretest/educate/self test/audit staff knowledge (I,S)

Patient Bathing:

- Supplies:: CHG and warmer stocked on unit (i)
- Policy change :Bathing must be done daily in shower or with CHG wipes. Patient encouraged 2X per day. (S)

Key:Tested (T), Implemented (I) or Spread (S)

Run Charts



References

- [1\)www.apic.org/Resource/.../CHG_crosswalk_PS1504_wint_er.pdf](http://www.apic.org/Resource/.../CHG_crosswalk_PS1504_wint_er.pdf)
- [2\) apic.org/Resource/.../2015/APIC_CLABSI_WEB.pdf](http://apic.org/Resource/.../2015/APIC_CLABSI_WEB.pdf)
- [3\)apic.org/Resource/_TinyMceFileManager/.../AC13_Prog_FI_NAL.pdf](http://apic.org/Resource/_TinyMceFileManager/.../AC13_Prog_FI_NAL.pdf)
- [4\)http://www.cdc.gov/getsmart/healthcare/implementation/clinicalguide.html](http://www.cdc.gov/getsmart/healthcare/implementation/clinicalguide.html)

Lessons Learned

Bundling supplies in a kit with a check off sheet ensures sustained compliance.

Giving patients two options for bathing and auditing documentation and process led to sustained change in the bathing process.

Next Steps

Next Steps:

- Secure vender to outsource blood culture supply bundle kit and stock in all acute care hospitals in system.
- Educate clinical staff throughout system
- Put together process to audit neutropenic bathing processes throughout system

Team Members

Project Champion : Jennifer Taylor RN, BSN,OCN,AMSRN
 Manager Oncology: Amy VandenHeuvel MSN, RN, CRRN
 Infection Control: Leslie Stanfield RN,BSN,CIC
 Education: Jaqueline Baker BSN, RN-BC, ONC

