



*NSF I/UCRC since 2001*



# IMS Predictive Technologies for Self-Maintenance Industrial Systems

**Jay Lee**

**Ohio Eminent Scholar, L.W. Scott Alter Chair, and Distinguished Research Professor  
Univ. of Cincinnati**

[Jay.lee@uc.edu](mailto:Jay.lee@uc.edu)

**&**

**Director**

**NSF Industry/University Cooperative Research Center on  
Intelligent Maintenance Systems (IMS)**

**Univ. of Cincinnati, Univ. of Michigan, Missouri Univ, of S&T, Univ. of Texas-Austin**

# The IMS Center



# Drivers and Transformation Technologies

## 2001

**Unexpected  
Breakdowns**



**Common  
Issues**

**Costly Downtime  
and Constrained  
Productivity**

**Reactive Approach  
to Service (Ad Hoc  
and Firefighting)**

**Excessive Warranty  
Costs**

**Too Much or  
Incomplete Data or  
Not in Useful Format**

**Common  
Attributes &  
Needs**

**Multi-Sensor Data  
Fusion**

**Degradation  
Assessment and  
Prediction**

**Retrievable  
Information from  
Anywhere at  
Anytime**

**IMS  
Focus**

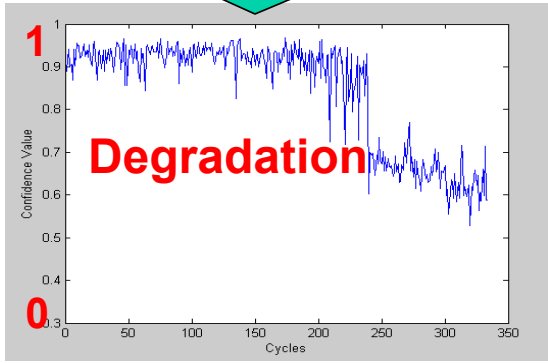
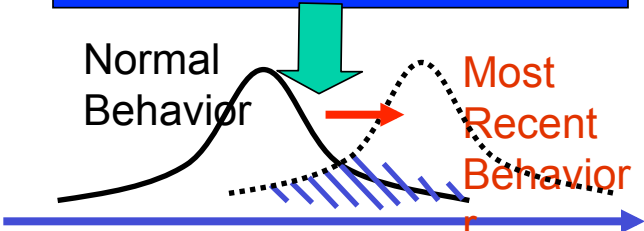
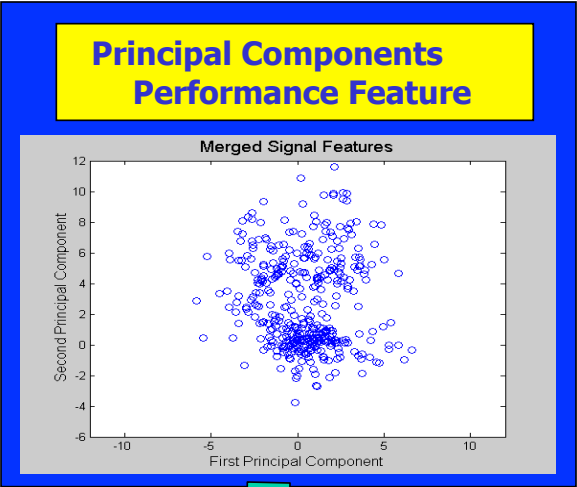
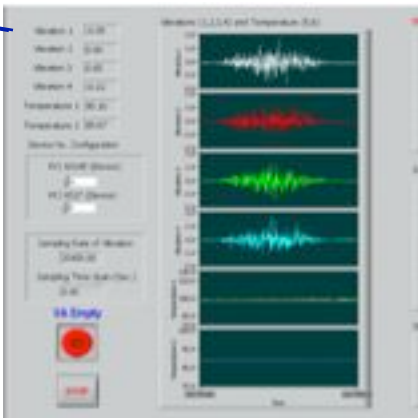
**Degradation  
Modeling**

**Predictive  
Informatics  
Tools (PHM)**

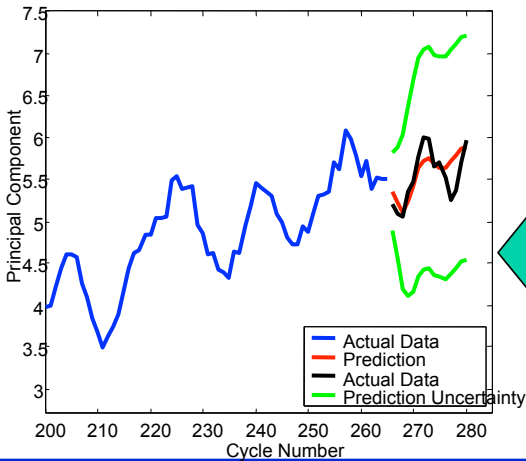
**Maintenance  
Analytics &  
Decision  
Support Tools**

**Fail & Fix (FAF) → Predict & Prevent**

# Predictive Analytics and Instrumentation

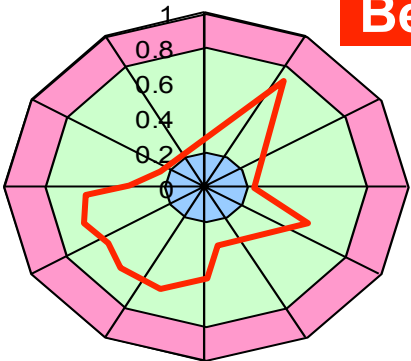


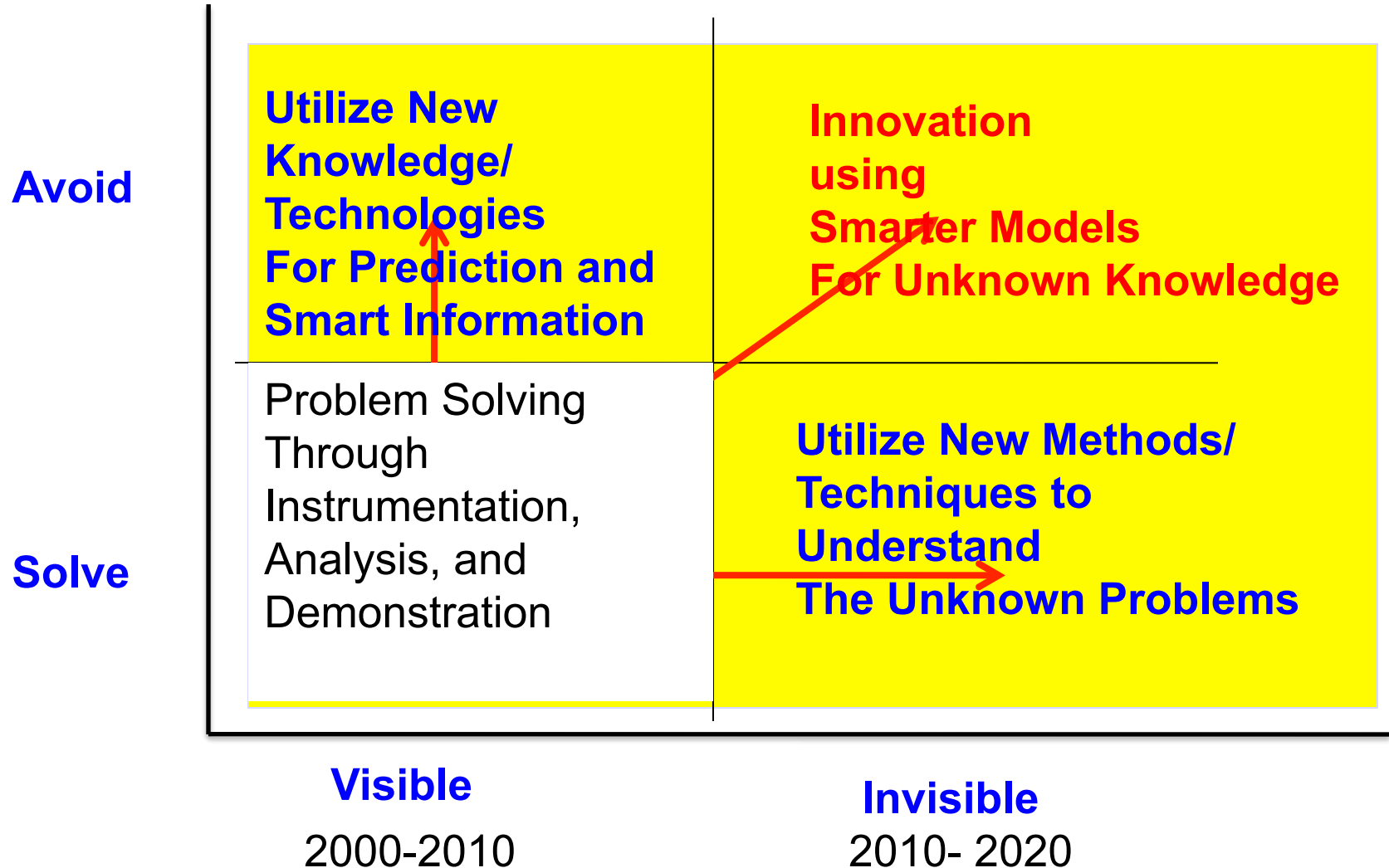
**Prediction of Machine Performance Life**



**Health Feature Radar Chart**

**Bearing**







# Wind Turbine Health Monitoring System



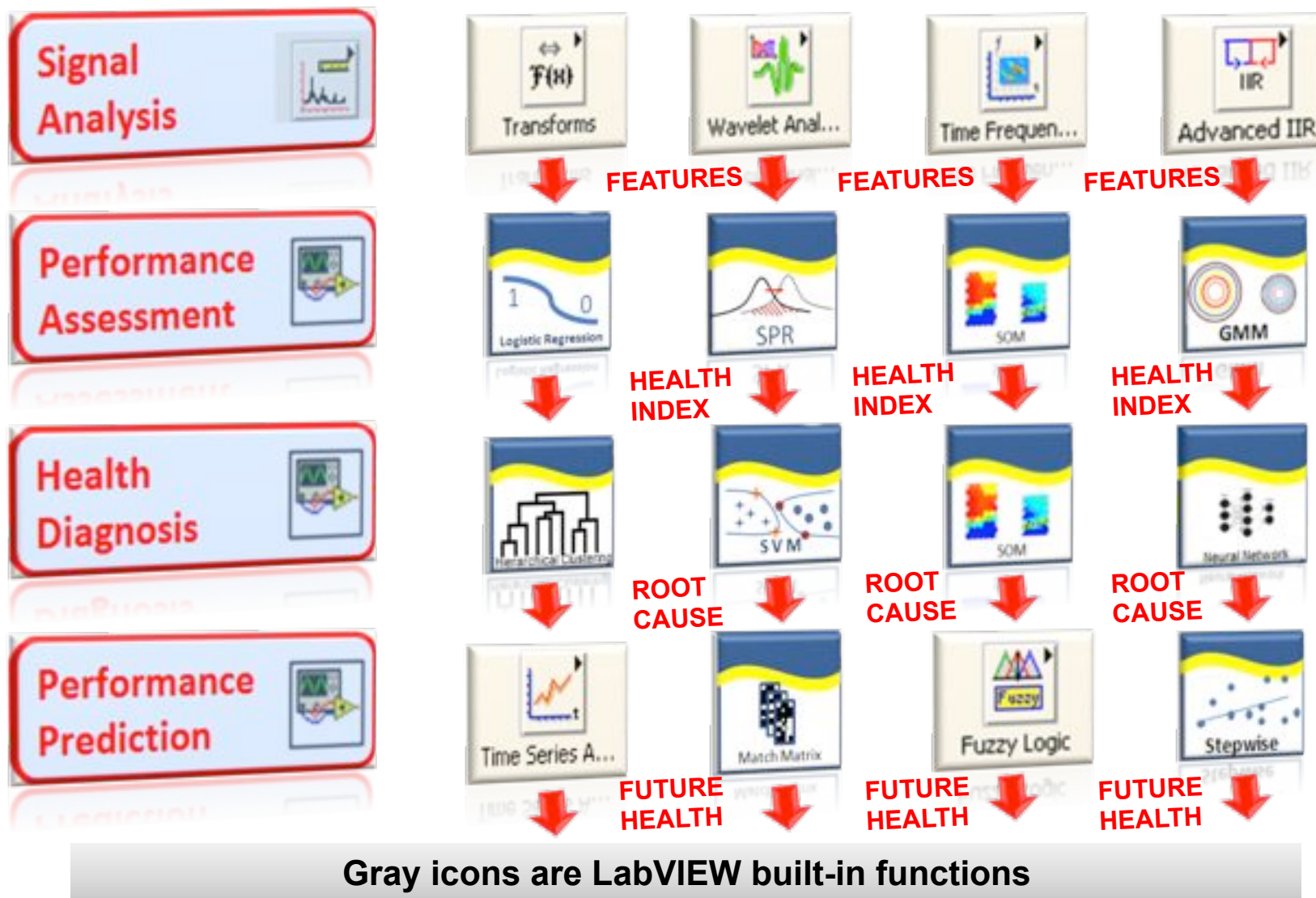
Select starting date:

01/01/08 12/05/08 03/02/10

01/01/08, 08:10 PM



# NI LabVIEW Watchdog Agent® Toolkit

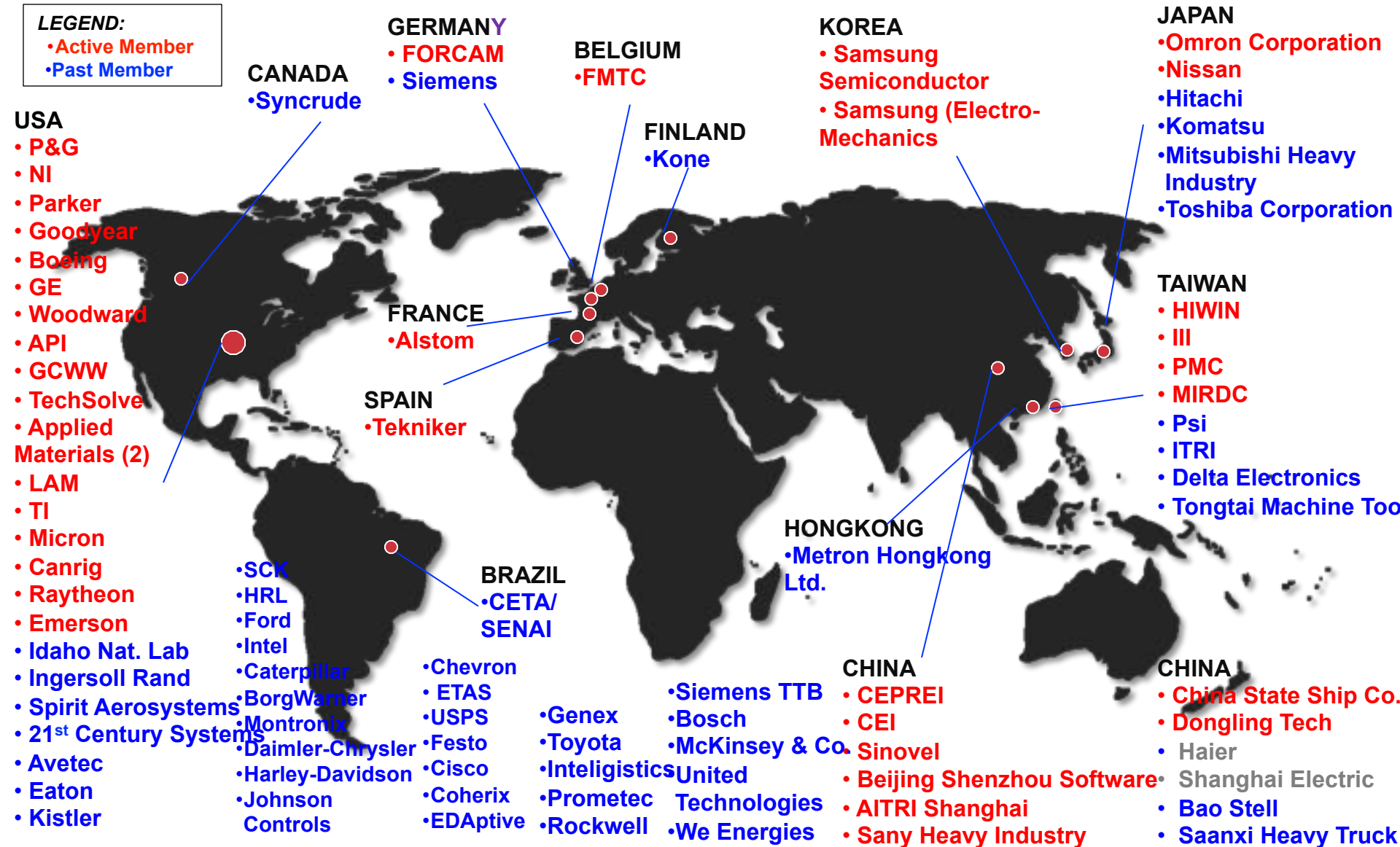


Gray icons are LabVIEW built-in functions

# Global Industry Partners (80)

## LEGEND:

- Active Member
- Past Member





# IMS Major Impacts



- 1. Won PHM (Prognostics and Health Mgt) Data Challenges Competition for 2008 (1<sup>st</sup> and 3<sup>rd</sup>) ,2009 (1<sup>st</sup>, 2<sup>nd</sup>, 3<sup>rd</sup>), 2010 (3<sup>rd</sup>), 2011 (1<sup>st</sup> and 3<sup>rd</sup>), 2012 (3<sup>rd</sup>), 2013 (3<sup>rd</sup>, 4<sup>th</sup>, 5<sup>th</sup>).**
- 2. Ranked the highest Economic Impacts (1:270) by NSF Economic Impact Study Report in 2012.**
- 3. NSF ICorps Award (2012) for New Company Spin Off- Predictronics**
- 4. NI for IMS License Trials started in Oct. 2011—NI Toolkit Official Global Licensing Will Start 2014.**
- 5. 85% of IMS students joined IMS member companies** (including GM, Boeing, GE, Siemens, Cummins, Caterpillar, Parker, Eaton, Goodyear, FORCAM, UTRC, Bosch, etc.)

**Agility**

**Business Model**

**Contagiousness**

**Delivery**

**Excellence** (Education, Execution, Energy, Entrepreneurship, etc.)