

**PANOCAM<sup>TM</sup> PRO**

Finally. Peace of mind.  
The future of brighter vision.

# PanoCam Pro™

## The comprehensive tool to aid in the diagnosis and management of pediatric and retinal vision disorders

Each year over 130 million children are born all over the world. Vision is the essential component of learning, communication and understanding, and critically important to healthy development and a productive life.

- PanoCam™ Pro eye images can help ensure that correct care pathways are followed by all who are connected to the child's care.
- Eye images become a permanent record of the child's health record.
- Images become a good tool for communicating with families and staff.
- Newborn eye screening is now being done in several countries around the world.
- Data now shows that a large percentage of newborns have vision disorders, which can be diagnosed, managed and treated if caught early. Currently, children do not have vision testing until they enter school.

## Innovation and imaging excellence

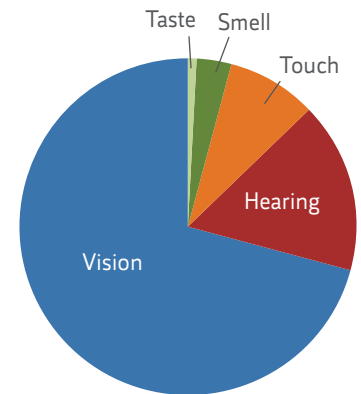
The PanoCam Pro represents the second novel technology platform for complete visual imaging in children all over the world. In the OR, the NICU, Nursery, Clinic or Office – multiple imaging modalities ensure healthy vision for children everywhere.

### The PanoCam Pro Difference

- Upgradeable modules to provide excellent visualization of vascular and structural anomalies.
- PanoCam Pro images provide True-Color™ high-resolution images of eyes in all children – light or dark-colored retina pigment viewed easily.

- The 130 degree field of view is the widest of any Wide-field Digital Imaging System for use in pediatric imaging. The MaxMag™ 70 Degree Lens provides for higher imaging magnification.
- Visunex Cloud Management System and PanoCam Review Software secure encrypted image and patient data transfer is HIPAA compliant.
- The Image Capturing Unit™ is not tethered to the PanoCam PRO console, allowing for image capture anywhere in the Hospital or Physician Offices.

### The Five Senses of Communication



The sense of sight accounts for 65% of learning, understanding and communicating

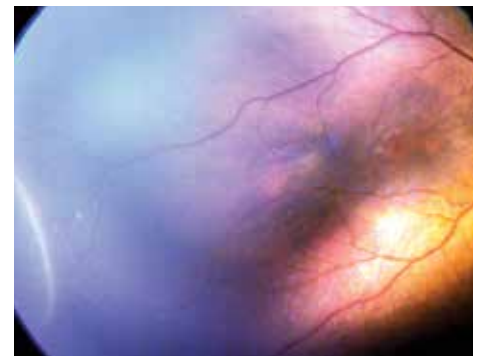


Image of ROP

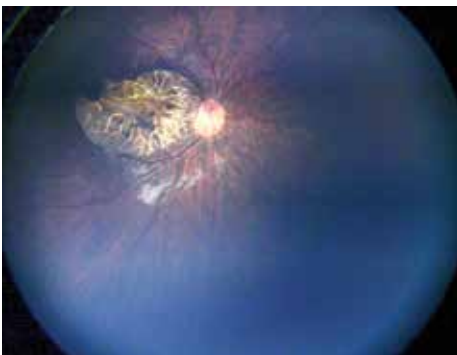


Image of Retinoblastoma

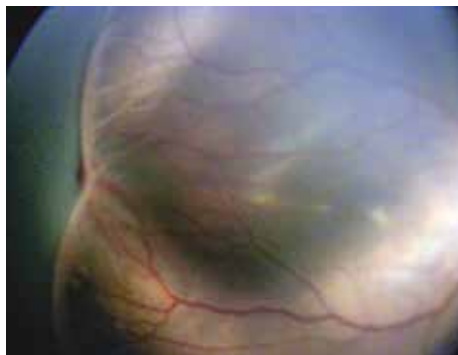


Image of ROP

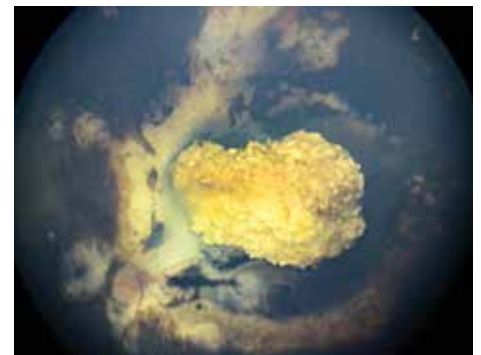


Image of Retinoblastoma

# Fully integrated for convenience

From image capture in the OR, NICU, Office or Birthing Center, the PanoCam Pro is a critical tool for pediatric eyesight. It can help clinicians discover, diagnose, and manage pediatric vision disorders.

- External, anterior and posterior imaging provides guidance for pediatric vision care, while upgrades can aid in the assessment of vascular and structural pathologies.

- PanoCam Pro imaging is completely wireless – the Image Capturing Unit™ can be carried remotely for imaging anywhere at any time.
- Modular design allows for future additional diagnostic capabilities as an option to be added to the current system.
- Images and data can be accessed anywhere in the world with internet access 24/7, 365 days a year.

- PanoCam Cloud Management and PanoCam Review Software transform PanoCam Pro into a revolution in telemedicine. No other system combines imaging, structure and function with clinician access to informatics for complete patient management solutions.
- The SmartPort™ connector allows lighting power in the lens of the Image Capturing Unit.

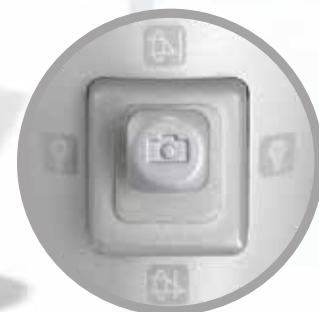


Central control over imaging and structural integrity of all posterior and anterior eye pathologies in one single system



Image Capturing Unit

Non-tethered Image Capturing Unit can be used to image newborns in NICU, Clinic, OR or Birthing Center.



Tri-function Joystick

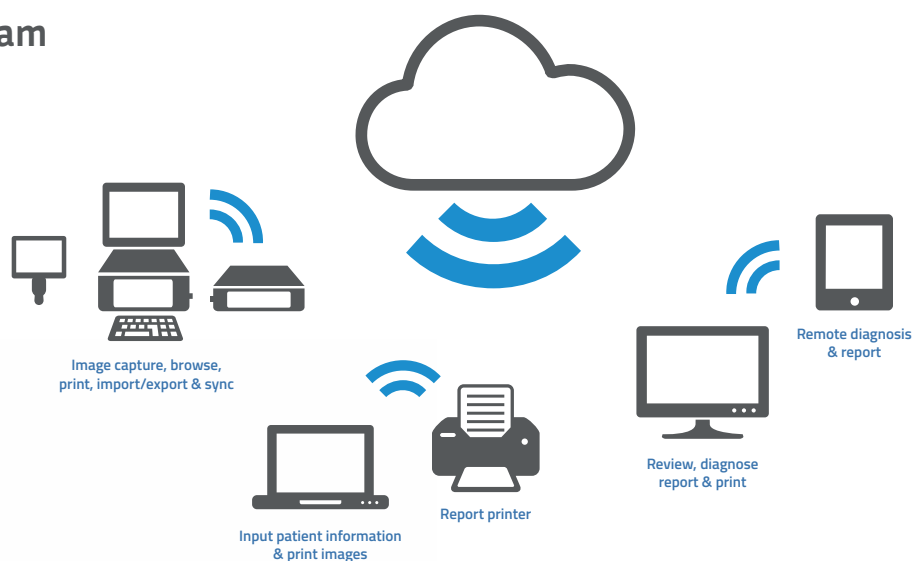
PanoCam Pro also comes with a wireless footswitch for image capture.



Product Specifications:	
Applications	Pediatric (includes fundus, cornea and external) images
Imaging Resolution	13 mega-pixel
FOV (Field of View)	130° lens, 70°
Handheld, Console and Printer Communication	Wireless
Data Import/Export	Encrypted, proprietary data format wireless import/export
Footswitch	Wireless, 32 feet or 10 meter effective distance, wireless charging
Telemedicine Capability	Intelligent networking technology provides automatic provisioning between wireless and wired networks
Connectivity	Connects to Visunex Cloud Management System to the remote diagnostic terminal to review data by the physicians
Operating Systems	MS Windows Operating System (Console), Quad-Core CPU, 8GB RAM, Support 802.11 a/b/g/n. Android (ICU)
Weight	220 lbs or 100 Kg

## PanoCam Cloud and PanoCam Review Software

PanoCam DICOM images and data can be shared with hospital PACS, EMR, and Cloud Management Systems. PanoCam telemedicine solutions are HIPPA compliant ensuring all patient images and data are secure at all times. Access via the web at any time, anywhere.



**Visunex Medical Systems, Inc.**

46824 Lakeview Boulevard

Fremont, CA 94538

Toll Free: 844.273.1580

Direct: 510.248.4216

[www.visunexmedical.com](http://www.visunexmedical.com)